

Product datasheet for **RG222295**

APXL (SHROOM2) (NM_001649) Human Tagged ORF Clone

Product data:

Product Type:	Expression Plasmids
Product Name:	APXL (SHROOM2) (NM_001649) Human Tagged ORF Clone
Tag:	TurboGFP
Symbol:	SHROOM2
Synonyms:	APXL; HSAPXL
Mammalian Cell Selection:	Neomycin
Vector:	pCMV6-AC-GFP (PS100010)
E. coli Selection:	Ampicillin (100 ug/mL)
ORF Nucleotide Sequence:	>RG222295 representing NM_001649 Red=Cloning site Blue=ORF Green=Tags(s)

TTTTGTAATACGACTCACTATAGGGCGGCCGGAATTCGTCGACTGGATCCGGTACCGAGGAGATCTGCC
GCC**CGATCGCC**

ATGGAGGGCGCCGAGCCCGCGCGGGCCGAGCGCCTGGCCGAGGCCGAGACGCGGGCGGGACGGCG
GGCGCCTGGTGGAGGTGCAGCTGAGCGGGCGGCCCGTGGGGCTTACCCTGAAGGGCGGCCGCGAGCA
CGGCGAGCCGCTGGTCATACCAAGATTGAAGAGGGCAGTAAAGCCGCGGGTGCACAAGTTACTGGCT
GGAGATGAGATCGTCGGCATCAATGACATTGGTCTCTCAGGGTTAGACAGGAAGCGATTTGCCTGGTGA
AGGGTCCCATAAAGACCCTGAAGCTGGTCGTCAAAGGAGGAGCGAGCTGGGCTGGAGGCCCTCACTCTG
GCATGCCACCAAGTTCTCTGACAGCCACCCGAGCTAGCGGCCTCCCATTCACCTCCACCAGCGGCTGT
CCTTCCTGGTCCGGCCGACACCACGCGAGTTCTTCTCCACGACCTGTCCAGTTCTGGGAGCAGACGA
ACCTACAGCGCACCTTAGATCACTTCAGCTCCTGGGGAGCGTTGACAGCCTGGACCACCCCTCCAGTCG
CCTCTCGGTGGCCAAGTCCAACAGCAGCATCGACCACCTGGGCAGCCACAGCAAGCGGACTCGGCCTAC
GGCTCCTTCTCCACCAGCTTAGCACTCCTGACCACACCTTGCCAAAGCCGACAGTCTCCGACAGAGA
ACATCCTTACTACTGTGGGCCTCTGGGAGGCTCCCAGGAGGGTGGCCGGCAGGCCAGGCCGAGGCCGA
CCCTCAGGGCTCGGAGGAGAAGCTCAGTTGTTTCCCGCCAGGGTCCCGGTGACAGCGGCAAAGGCCCC
AGGCCAGAGTACAATGCCGAGCCCAAGCTGGCTGCCCTGGGAGGTCCAATTTTGGGCCAGTCTGGTATG
TTCCCGATAAGAAGAAAGCACCATCATCCCACCTCCTCCCTCCCTCCCGAGTGCAGCTTTGC
TGCCACCAAGAGCCACGAGAAGGCCAGGGCCCTGTGTTCTCAGAGGCGGCTGCGGCACAGCACTTTACG
GCCCTGGCCAGGCTCAGCCTCGTGGTACCAGGAGACCAGAGCTACCGATCGGCCTTGGAGGTCAGCAC
ACCCGGGAGCCTCGGAAGGGATCGGGAGGCCCGGGCTGCCACAGGAGGCCACGCAGACGGCAGCTG
GCCGCCCTCAAGGATGGAGCTTCCAGTAGGCTGCAGGCCTCTGTCCAGCTCAGATGTGCGCTTCCCT
CAGTCTCCTCATAGCGCCGACACCCCTCCCTATACAGCGACCACAGCCCTCTGTGCTGACAGCCTTG
GGCAGGAGCCAGGGGCTGCCAGTTCAGAACGACAGCCCTCCTCAGGTGAGGGGCTCAGCAGCTGTGA
CCAGAAGCTGGGAGCGGCTGGCAGGGTCCCGGCCCTGTGTGACGGGAGACCTGCAAGCAGCACAGCTC



TGGGCGGGATGCTGGCCTTCTGACACAGCCCTTGAGCCCTCGAGAGTCTTCCCCACCCACGGTGGGCC
 AGAGCCCACGCCATCACCTACCTCAGCCTGAGGGTCTCCGGATGCCCGGAGACAGGACGGTGTACCC
 GCTGGACAAAGGGGCGAGGGCTGCTCCGCGGGAGCCAGGAGCCTCCCAGGGCCAGCCGTGCAGAAAA
 GCCAGCCAGAGGCTGGCAGCCAGCATCAGTGGCAGATGGGGAGAGCAGCAGGATCTGCCCGCAGGAGA
 CGCCCCGTTGCACTCCCTGACCAGGAGGGGAAGCGCCGGCCTGAGAGCAGTCCAGAGGACAGCGCCAC
 CAGACCCACCCTGTCGACGCCACGTGGGCAAGCCACCCGAAGAAGCGACCCGTTTGCACCACCCTG
 CGGAATGAGATCCAGATGCATAGAGCCAAGCTGCAGAAGAGCCGGAGCACAGTGGCTCTGACTGCAGCA
 GGGAGGCCGAGGATGGCACCCGGCGCTGGAGGGCCGGTTGGGAGGTGGCACCCAGGAAGGACCCCTCGC
 TGGCACCTATAAAGACCCTGAAAGAGGCCAAGCCCGGTCTGAGGGCCACGTCCTTCAAGCGCCG
 GACTTGGACCCCAACCCAGGAGACCTATAACCCGGAGTCACTGGAACACCCGGATGGGGATCCAGACTG
 TCCCCACTTCTGGGAGGCAGGCCTGGCCAGCCACCCTCATCTACAAGTGGCGGGCCCCACCCGCCCG
 CATCGGAGGCCGAGACGGTTCACAGCTGAGCAGAAATTGAAGTCTACTCGGAACCTGAGAAGTGAAC
 GAGGTGGCCCTCACGAGGGGCTACAGTCTCACCAGCACCAGGACATCTGAGGATACTGTGGCAGCT
 TTGCTGACAGGTGAAGTTTTTTGAGGAAACGAGCAAACCTGTTCCCAGAGGCCGCCAGAAGCAAGC
 TCTTACGGAATCCCAGAGACAAGCCAGAGAGCCGCGGACAGCGGGCCGCACATGTGAGGGCACGGAG
 CCCTGGTCGCGCACCCCTCCCTTGGGGACAGCCTCAACGCTCACAGCGAGCGAGAAGGCAGGGA
 CAGACCTGCCCGGAGGCTCGGCACCTTTCAGAGTATCAGGCCTCTTGAAGGAACAGAGGAAACCTCT
 GGAGGCCAGGAGCTCTGGGCGCTGCCACTCAGCGGATGACATCCTGGATGTGAGCCTGGACCCACAGGAG
 AGGCCGCAGCAGTTCATGGGAGGTCCCGGTCTTACCCTCCACAGACCACTACAAGCAGGAAGCTTCTG
 TCGAATGCGAAGGCAGGCAGGGGACCCCGGCGAGCCAGAGAAGAGTTCCTCCGAGTCCGGGCCGA
 GGAGGGACAGTCCACGCCGAGACAAGCAGATGCCAGTGTGGGAAGGCAGCCAGGATCACAGCAGCAC
 CCACCCAGTCAAGAGCCACCCACCCACATTCTGAACTATCTACTGCCGGGAGCCCCAGAGC
 TGCCCCGGGAGGGCCGGGCGGAGCGGGAACCTACCTCGAGATTATAGATACTCGGAGGAGAGACCC
 AGCAGACTTGGGACCCGAGCCAGAGCCCTGGCTCACCCTGCATGCTCGAGGACAAGACTCGTGGCCA
 GTGAGCTCAGCCCTGCTCTCAAGAGGCCAGCCACAGAGGCCACCCGACCCAAAGCGGAGCCAGGA
 GATACAGGGCCACAGACGGCGCACCTGCTGACGCCCCCGTGGGCGTCTCGGCAGGCCCTTCCCAACGCC
 ATCCCCTGCGTCCCTGGATGTGTATGTGGCCCGCTGTCCCTCTCCACAGCCCTCTGTGTTCCAGCAGT
 GCCCAGCCCAGGACACCCGAAGGCCACTGTCTGTGAGCGTGAAGCCAGCATGTGAGCGGGGACGCAT
 CACGTCTCTGCCAGAAGCACTGCTCCCTCCAAGCAGCAGCACCTGCGCTGCAGACGGCCACCATGGA
 GACCTCGCGCTCCCCCTCGCCCCAGTTCGCCCCCAGAACTGACGGACAAACCTCCCCTGCTCATCCAG
 GATGAGGATTAACCAGAATTGAGCGGGTGTGGAACAACAACACCAGGTGAAGATGGTGCCATCAAGA
 TCGTGCACCTCGGAGAGCCAGCCAGAGAAGGAGAGCCGCCAGAGCCTGGCATGCCCGCCGAGCCACCTGC
 CCTGCCCCACGGGCTGGAGAAAGACCAGATCAAGACGCTGAGCACATCTGAGCAGTTCTACTCGCGTTC
 TGTCTGTACACGCGGCAGGGTGTGAGCCCGAGGCCACATAGGGCCAGCCGGCTGAGCCCCAGCCCC
 TGGGCACCCAGGTGCCCCCGAGAAAGACCCTGCACCTCCCCTCCAGGGCTCAGCTACATGAAGGCCAA
 AGAGAAGACTGTGGAAGACCTGAAGTCGGAGGAGCTGGCCAGGGAGATCGTGGGAAGGATAAGTCCCTG
 GCCGACATCCTGGATCCCAGTGTGAAGTCAAAACCACTATGGACTTGATGGAAGGCATCTTCCCAAAG
 ACGAGCACCTCCTGGAAGAAGCCAGCAACGGAGGAAGCTGCTCCCCAAAATCCCCTCTCTAGAAAGCAC
 AGAGGAGAGGAAAGAGGAGCCAGCGTGCCTGCGGCCGTGTCCTGGCCACCAATTCTACCTACTACAGC
 ACGTCCGCCCCAAGGCGGAGCTGCTGATCAAGATGAAGGACCTGCAGGAGCAGCAGGAGCACGAAGAGG
 ATTCGGGAAGCGACTTGGACCACGACTGTGCGTGAAGAAGCAGGAGCTCATCGAGAGCATCAGCCGCAA
 GCTGCAGGTGCTCCGGGAGGCCCGCAGAGCCTGCTGGAGGACGTGCAGGCCAACACCGTCTGGGGCC
 GAGGTGGAGGCCATCGTGAAGGCGTCTGCAAGCCAGCGAGTTTGACAAGTTCGGATGTTTATTGGAG
 ACCTGGACAAAGTGGTGAACCTCTGCTGCTGTCAGGCCCTGGCCGGGTGGAGAATGCCCTCAA
 TAATTTGGACGACGGCGTCTCCCGGTGATCGGCAACTGCTTGGAGAAGCAGAGAGTCTGATCCAG
 CAGCACGAGGACCCAAGGAGCTCAAGGAGAACCTGGACCGCCGAGCGCATCGTCTTTGACATTTTGG
 CCAACTATCTGAGCGAGGAGAGCCTCGCGACTATGAGCACTTCTGTAAGATGAAGTCGGCCCTCATCAT
 CGAGCAGCGGGAGCTGGAAGATAAAATCCACCTTGGTGAAGAGCAGCTGAAGTGCTATTGGACAGCCTT
 CAGCCCCAAAGGGGCAA

ACGCGTACGCGGCCGCTCGAG - GFP Tag - GTTTAA

Protein Sequence: >RG222295 representing NM_001649
 Red=Cloning site Green=Tags(s)

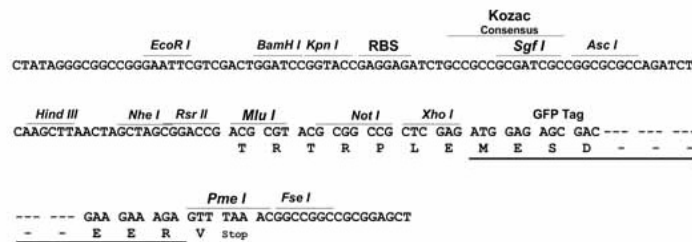
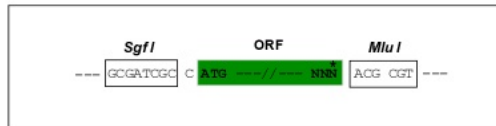
MEGAEPRARPERLAEETRAADGGRLVEVQLSGGAPWGF TLKGGREHGEPLVITKIEEGSKAAAVDKLLA
 GDEIVGINDIGL SGFRQEATICLVKGSHTLKL VVKRRSELGWRPHSWHATKFSDSHPELAA SPFTSTSGC
 PSWSGRHHASSSSHDLS SWEQTNLQRTLDHFSSLGSVDSL DHPSSRLSVAKSNSSIDHLGSHSKRDSAY
 GSFSTSSSTPDHTLSKADTSSAENILYTVGLWEAPRQGGRQAQAAGDPQGSEEKLSCFPPRPVPGDSGKGP
 RPEYNAEPKLAAPGRSNFGPVVYVPDKKAPSSPPPPPLRSDSFAATKSHEKAQGPVFSEAAAAQHFT
 ALAQAQPRGDRRPEL TDRPWSAHPGSLGKSGGPGCPQEAHADGSWPPSKDGASRLQASLSSSDVRF
 QSPHSGRHPPLYSDHSPLCADSLGQEPGAASFQNDSPQVRGLSSCDQKLGSGWQGP RPVCVQGD LQAQ L
 WAGCWPSDTALGALESLPPPTVGQSPRHLPQPEGPPDARETGRCYPLDKGAEGCSAGA QEP PRASRAEK
 ASQRLAASITWADGESSRICPQETPL LHSLTQEGKRRPESSPEDSATRPPPFDAHV GKPTRRSDRFATTL
 RNEIQMHRAKLQKSRSTVALTAAGEAEDGTGRWRAGLGGGTQEGPLAGTYKDHLKEA QARVLRATSFKRR
 DLDPNPGDLYPESLEHRMGDPDTPHFWEAGLAQPPSSTSGGPHPPRIGRRRFTA EQKLKSYSEPEKMN
 EVGLTRGYSPHQHPRTSEDTVGTFA DRWKF FEETSKPVPQRP AQKQALHGIPRDKPERPRTAGRTCEGTE
 PWSRTTSLGDSLNAHSAAEKAGTSDLPRLGTF AEYQASWKEQRKPLEARSSGRCHSADDILDVSLDPQE
 RPQHVHGRSRSSPSTDHYKQEASVELRRQAGDPGEPREELPSAVRAEEGQSTPRQADAQCREGSPGSQQH
 PPSQKAPNPPTFSEL SHCRGAPELPREGRAGTLPRDYRYSEESTPADLGPRAQSPG SPLHARGQD SWP
 VSSALLSKRPAPQRPPPKREPRRYRATDGAPADAPVGV LGRPFPTSPASLDVYVARLSL SHSPSVFSS
 AQPQDTPKATVCE RGSQHVSGDASR LPEALLPPKQQLRLQTATMETSRSPPQFAPQK LTKD KPLL IQ
 DEDSTRIERVMDNNTTVKMVPIKIVHSESQPEKESRQSLACPAEPPALPHGLEKDKI KTLSTSEQFYSRF
 CLYTRQGAEP EAPHRAQPAEQPLGTQVPPEKDRCTSP PGLSYMKAKEKTVEDLKSEELAREIVGKDKSL
 ADILDPSVKIKTTMDLMEGIFPKDEHLLEEAQRRKLLPKIPSPRSTEERKEEPSVPAAVSLATNSTYYS
 TSAPKAELLIKMKDLQEQQEHEEDSGS DLDHDL SVKKQELIESISRKLQV LREARES LLEDVQANTV LGA
 EVEAIVKGVCKPSEFDKFRMFIGDLKVVNLLLSL SGRLARVENALNLDGASPGDRQS LLEKQRV L IQ
 QHEDAKELKENLDRRERIVFDILANYLSEESLADYEHFVKMSALII EQRELEDKIHLGEEQLKCLLD SL
 QPERGK

TRTRPLE - GFP Tag - V

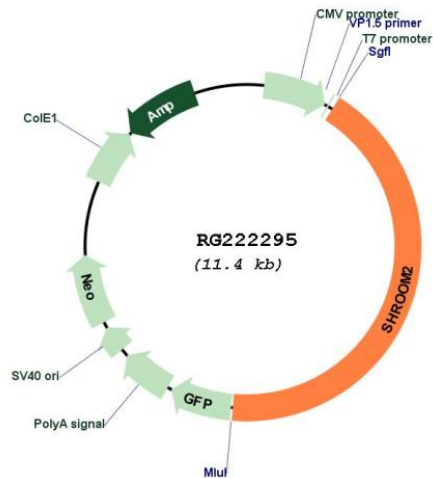
Restriction Sites: Sgfl-MluI

Cloning Scheme:

Cloning sites used for ORF Shutting:



Plasmid Map:



ACCN: NM_001649

ORF Size: 4848 bp

OTI Disclaimer: The molecular sequence of this clone aligns with the gene accession number as a point of reference only. However, individual transcript sequences of the same gene can differ through naturally occurring variations (e.g. polymorphisms), each with its own valid existence. This clone is substantially in agreement with the reference, but a complete review of all prevailing variants is recommended prior to use. [More info](#)

OTI Annotation: This clone was engineered to express the complete ORF with an expression tag. Expression varies depending on the nature of the gene.

Components: The ORF clone is ion-exchange column purified and shipped in a 2D barcoded Matrix tube containing 10ug of transfection-ready, dried plasmid DNA (reconstitute with 100 ul of water).

Reconstitution Method:

1. Centrifuge at 5,000xg for 5min.
2. Carefully open the tube and add 100ul of sterile water to dissolve the DNA.
3. Close the tube and incubate for 10 minutes at room temperature.
4. Briefly vortex the tube and then do a quick spin (less than 5000xg) to concentrate the liquid at the bottom.
5. Store the suspended plasmid at -20°C. The DNA is stable for at least one year from date of shipping when stored at -20°C.

RefSeq: [NM_001649.4](#)

RefSeq Size: 7445 bp

RefSeq ORF: 4851 bp

Locus ID: 357

UniProt ID: [Q13796](#)

Cytogenetics: Xp22.2

Protein Families: Druggable Genome

Gene Summary: This gene represents the human homolog of *Xenopus laevis* apical protein (APX) gene, which is implicated in amiloride-sensitive sodium channel activity. It is expressed in endothelial cells and facilitates the formation of a contractile network within endothelial cells. Depletion of this gene results in an increase in endothelial sprouting, migration, and angiogenesis. This gene is highly expressed in the retina, and is a strong candidate for ocular albinism type 1 syndrome. Alternatively spliced transcript variants have been found for this gene. [provided by RefSeq, Mar 2016]