

Product datasheet for **RG222286**

NOL4 (NM_003787) Human Tagged ORF Clone

Product data:

Product Type:	Expression Plasmids
Product Name:	NOL4 (NM_003787) Human Tagged ORF Clone
Tag:	TurboGFP
Symbol:	NOL4
Synonyms:	CT125; HRIHFB2255; NOLP
Mammalian Cell Selection:	Neomycin
Vector:	pCMV6-AC-GFP (PS100010)
E. coli Selection:	Ampicillin (100 ug/mL)



[View online »](#)

ORF Nucleotide Sequence:

>RG222286 representing NM_003787
 Red=Cloning site Blue=ORF Green=Tags(s)

TTTTGTAATACGACTCACTATAGGGCGGCCGGAATTCGTCGACTGGATCCGGTACCGAGGAGATCTGCC
 GCC**CGCATCGCC**

ATGGAGAGCGAGCGCACATGTACCGCCAGTTCAGGACTGGTGCCTCAGGACTTACGGGGACTCAGGCA
 AGACCAAGACGGTGACCCGTAAAAAATACGAACGGATCGTCCAGCTCCTCAATGGCTCCGAGTCGAGCTC
 CACGGACAACGCCAAATTTAAATTTCTGGGTCAAATCGAAGGGCTTCCAGCTGGGCCAGCCGACGAGGT
 CGCGGGGGAGGCGCGCGCCAAGCAAGTCTCTACGTGCCTGTCAAGACCACGGATGGCGTAGGGGTAG
 ATGAGAAGCTATCTTTACGACGGGTAGCTGTGGTTGAAGATTTCTTTGACATTATTTATTCGATGCATGT
 GGAAACGGGGCCAAATGGAGAACAATTCGAAACACGCTGGACAAAAGAGAACTTACAAAGCAATTTCA
 GAGAGCTATGCCTTCTACCAAGAGAAGCGGTGACACGATTTCTAATGAGCTGCTCAGAGTGCCAGAAAA
 GAATGCATTTAAACCCAGATGGAACAGATCATAAAGATAATGGAAAACCTCCACTTTGGTGACCAGCAT
 GATTGACTACAACATGCCAATTACCATGGCCTACATGAAACACATGAAGCTGCAGCTGCTAAACTCACAG
 CAAGATGAGGATGAAAGTTCAATAGAAAGTGATGAATTTGACATGAGTGATTC AACACGGATGTCAGCTG
 TGAACCTCTGATCTTAGCTCCAATCTTGAAGAAAGAAATGCAAAGTCCCAAGATCTTCATGGCCAGCAAGA
 TGATGATTCTGCTGCAGAGAGCTTAAATGGCAATGAGACTCTGGGGCACAGTTCAATTGCTTCAGGGGA
 ACACACAGCAGGGAGATGGGAGACTCCAACAGTATGGCAAACTGGGCTGGAGCAAGATGAACAGCCAC
 TGAACCTGAGTGACAGTCCCCTCTGCGCAGCTAACTTCGGAATACAGAATAGATGATCACAACAGTAA
 TGGGAAAAACAAGTATAAGAATCTTCTAATTTCTGACCTCAAGATGGAACGAGAGGCGAGAGAAAAATGGA
 AGCAAGTCTCCTGCACATAGTTACTCCAGCTATGACTCTGGCAAAAATGAGAGTGTAGACCGAGGAGCTG
 AGGACCTCACTAAACAGGGGAGATGAGGACGAAGATGACCACGAGGACCATGACGATTCGGGAAAGT
 TAATGAGACAGACGGCGTTGAAGCCGAGCGGCTGAAAGCTTTTAAATATGTTTGTGACGGCTGTTTGTAGAT
 GAAAACCTTGACCGAATGGTCCCAATCTCTAAGCAGCCAAAGAAAAGATCCAGGCTATCATTGACTCAT
 GCAGGCGACAATCCCTGAGTATCAAGAGCGTGCCAGAAAACGTATACGTA CTTACCTCAAGTCTGCGAG
 GCGGATGAAAAGAAGTGGTTTTGAGATGTCTCGACCTATTCCTTCCCACCTTACTTCAGCAGTTGCAGAG
 AGTATCTTGGCTCAGCTTGTGAGAGTGAGAGTAGAAATGCCCAAGAGGATGCGTCTGGAGAGACAGC
 AGGATGAGTCTGCTCCAGCTGACAAACAGTGTAAACCAGAGGCGACCCAGGCCACTTACTCAACATCAGC
 TGTTCCAGGCTCACAGGACGTGTGTACATCAATGAAAATGGGACCTATAGTTACCATAGTTACAGAGGG
 CTAGGAGGGGTCTGCTAAATCTGAATGATGCTTCCAGCAGTGGACCCACTGATCTCAGCATGAAGAGAC
 AATTGGCGACTAGCTCAGGATCCTCCAGCAGCTCAAACCTCCAGACCCAGCTGAGTCCAACCTGAAATCAA
 TGCCGTGAGACAGCTTGTGTCAGGATATCGAGAATCAGCTGCATTTTTATTGCGATCTGCAGATGAAGT
 GAAAATCTCATTTTACAACAGAAC

ACGCGTACGCGGCCGCTCGAG – GFP Tag – GTTTAA

Protein Sequence:

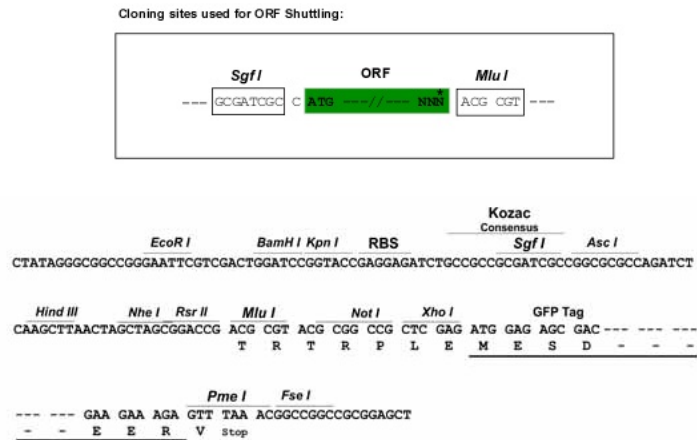
>RG222286 representing NM_003787
 Red=Cloning site Green=Tags(s)

MESERDMYRQFDWCLRTYGDGSKTKTVTRKKYERIVQLLNGSESSSTDNAKFKFWVSKGFQLGQPDEV
 RGGGGGAKQVLYVPVKT TDGVDGVEKLSLRRVAVVEDFFDIIYSMHVETGPNGEQIRKHAGQKRTYKAIS
 ESYAFLPREAVTRFLMSCSECQKRMHLNPDGTDHKDNGKPPTLVTS MIDYNMPTIMAYMKHMKLQLLNSQ
 QDEDESSIESDEFDMSDSTRMSAVNSDLSSNLEERMQSPQNLHGQQDDDSAAESFNGETLGHSSIASGG
 THSREMGDSNSDGKTGLEQDEQPLNLSDSPLSAQLTSEYRIDDHNSNGKNKYKNLLISDLKMEREARENG
 SKSPAHSYSSYDSGKNESVDRGAEDLSLNRGDEDEDHEDHDDSEKVNEDTGVEAERLKA FNMFVRLFVD
 ENLDRMVPISKQPKEKIQAIIIDSCRRQFPEYQERARKRIRTYLKSRRMKRSGFEMSRPIPSHLTSAVAE
 SILASACESERNAAKRMRLERQQDESAPADKQCKPEATQATYSTSAVPGSQDVLVINGNGTYSYHSYRG
 LGGGLLNLNDASSGPTDL SMKRLATSSGSSSSNSRPQLSPT EINAVRQLVAGYRESAAFLLSADEL
 ENLILQQN

TRTRPLE – GFP Tag – V

Restriction Sites: SgfI-MluI

Cloning Scheme:



ACCN: NM_003787

ORF Size: 1914 bp

OTI Disclaimer: The molecular sequence of this clone aligns with the gene accession number as a point of reference only. However, individual transcript sequences of the same gene can differ through naturally occurring variations (e.g. polymorphisms), each with its own valid existence. This clone is substantially in agreement with the reference, but a complete review of all prevailing variants is recommended prior to use. [More info](#)

OTI Annotation: This clone was engineered to express the complete ORF with an expression tag. Expression varies depending on the nature of the gene.

Components: The ORF clone is ion-exchange column purified and shipped in a 2D barcoded Matrix tube containing 10ug of transfection-ready, dried plasmid DNA (reconstitute with 100 ul of water).

Reconstitution Method:

1. Centrifuge at 5,000xg for 5min.
2. Carefully open the tube and add 100ul of sterile water to dissolve the DNA.
3. Close the tube and incubate for 10 minutes at room temperature.
4. Briefly vortex the tube and then do a quick spin (less than 5000xg) to concentrate the liquid at the bottom.
5. Store the suspended plasmid at -20°C. The DNA is stable for at least one year from date of shipping when stored at -20°C.

RefSeq: [NM_003787.5](#)

RefSeq Size: 3899 bp

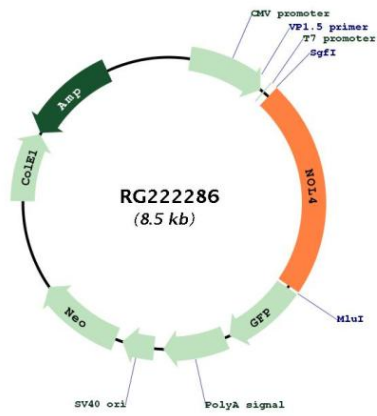
RefSeq ORF: 1917 bp

Locus ID: 8715

UniProt ID: [O94818](#)

Cytogenetics: 18q12.1

Product images:



Circular map for RG222286