

## Product datasheet for **RG222281**

### Raptor (RPTOR) (NM\_020761) Human Tagged ORF Clone

#### Product data:

Product Type:	Expression Plasmids
Product Name:	Raptor (RPTOR) (NM_020761) Human Tagged ORF Clone
Tag:	TurboGFP
Symbol:	Raptor
Synonyms:	KOG1; Mip1
Mammalian Cell Selection:	Neomycin
Vector:	pCMV6-AC-GFP (PS100010)
E. coli Selection:	Ampicillin (100 ug/mL)
ORF Nucleotide Sequence:	>RG222281 representing NM_020761 Red=Cloning site Blue=ORF Green=Tags(s)

TTTTGTAATACGACTCACTATAGGGCGGCCGGAATTCGTCGACTGGATCCGGTACCGAGGAGATCTGCC  
GCC**CGATCGCC**

ATGGAGTCCGAAATGCTGCAATCGCCTCTTCTGGCCTGGGGGAGGAAGATGAGGCTGATCTTACAGACT  
GGAACCTACCTTTGGCTTTTATGAAAAAGAGGCACTGTGAGAAAATTGAAGGCTCCAATCCTTAGCTCA  
GAGCTGGAGGATGAAGGATCGGATGAAGACAGTCAGTGTGCCTTAGTTTTGTGCCTGAATGTTGGTGTG  
GACCTCCCGATGTGGTGAAGACCACGCCCTGTGCACGCTTGAATGCTGGATCGATCCTCTGTCGATGG  
GTCTCAGAAAGCTCTGAAACCATCGGTGCAAAATTTACAGAAGCAGTACGAGAAGTGGCAGCCAAGGGC  
CCGGTACAAGCAGAGCCTTGACCCAAGTGGATGAAGTCAAGAAGCTCTGCACGCTCCTACGTCGCAAC  
GCCAAGGAGGAGCGAGTCTCTTCACTACAATGGCCACGGGGTGCCTCCGCCCCACAGTCAACGGGGAGG  
TCTGGGTCTTCAACAAGAACTACACGCAGTACATCCCTCTGTCCATATATGACCTGCAGAGCTGGATGGG  
CAGCCCGTCGATCTTCGCTACGACTGCTCCAATGCTGGCTTGATCGTCAAGTCTTCAAGCAGTTTCGCA  
CTACAGCGGGAGCAGGAGCTGGAGGTAGCTGCAATCAACCAAAATCACCTCTTGCTCAGATGCCTTTGC  
CTCCGTCGATGAAAACTGCATCCAGCTGGCAGCCTGCGAGGCCACCGAGCTGCTGCCATGATCCCCGA  
CCTCCCGCTGACCTATTCACCTCCTGCCTCACCACCCCATCAAGATCGCCTGCGCTGGTTTTGCATG  
CAGAAATGTGTCAGTCTGGTGCCTGGCGTCACACTGGATTTGATAGAAAAGATCCCTGGCCGCTGAAC  
ACAGGAGGACGCCCTGGGTGAACTGAACTGGATCTTACAGCCATCACAGACACCATCGCGTGGAACTG  
GCTCCCCGGGATCTCTTCCAAAAGCTCTTCCAGACAGGACTTGCTGGTGGCTAGTCTGTTTTCGAAATTTT  
TTATTGGCGAAAGGATTATGAGGTCGATAAAGTCACTCCCGTCAGCAGCCCGCTGCGCCACAGT  
ACATGCACGCCATGTGGCAAGCCTGGGACCTGGCTGTTGACATCTGTCTGTCTCAGCTGCCGACGATCAT  
CGAGGAAGGCACTGCGTTTTCGGCACAGCCGTTCTTCCGCGAGCAGCTGACCGCATTCCAGGTGTGGCTC  
ACCATGGTGTGGAGAACCAGAAACCCACCCGAACAGCTGCCATCGTCTGCAGGTGCTGTTAAGCCAAG  
TGCACCGCTGAGAGCATTGGACTTGCTTGAAGATTTTGGACCTGGTCCCTGGGAGTGGCCTGGC  
CTTGTCTGTCGGATCTTCCCCTACGTGCTGAAGTCTCCAGAGCTCGGCCGAGAGCTGCGGCCACTT



[View online »](#)

CTCGTTTTTCATCTGGGCCAAGATCCTCGCAGTGGACAGCTCGTGCCAAGCGGACCTCGTGAAGGACAACG  
 GCCACAAGTACTTCTGTGCGTCTGGCGGACCCCTACATGCCAGCTGAACACCGGACCATGACGGCTTT  
 CATTCTCGCCGTGATCGTCAACAGCTATCACACGGGGCAGGAAGCCTGCCTTCAGGGAAACCTCATTGCC  
 ATCTGCCTGGAGCAGCTCAACGACCCGCACCCCTTGTGCGCCAGTGGGTGGCCATCTGCCTCGGCAGGA  
 TCTGGCAGAACTCGACTCGGCGAGGTGGTGGCGGTGAGGGACAGCGCTCATGAGAAGCTCTACAGCCT  
 CCTCTCCGACCCATTCCCGAGGTCCGCTGCGCAGCGGTCTTCCGCTTGGCACGTTCTGTGGCAACTCT  
 GCAGAGAGGACGGACCACTCCACCACCATCGACCACAACGTGGCCATGATGCTGGCCAGCTGGTGCAGCG  
 ACGGGAGCCCATGGTCCGGAAGGAGCTGGTGGTGGCTCTGAGTCATCTTGTGGTTCAGTATGAAAGCAA  
 TTTCTGCACCGTGGCCCTGCAGTTCATAGAAGAGGAAAAGAACTACGCCTTGCCTTCTCCAGCAACCACA  
 GAGGGAGGGAGTTTGACCCCACTGCGAGACAGCCGTGCACCCCACTTCTGTTCTGTGAGCTCTATG  
 GAAACATCCGTGCTGTGCCACAGCCAGGAGCCTCAACAAATCTTGCAGAACCTGAGTTTGACAGAGGA  
 ATCTGGTGGCGCGGTGGCGTTCTCCCCGGAACTCAGCACCAGCAGCAGCGCCAGCAGCACCTGGGC  
 AGCCCCGAGAATGAGGAGCATATCCTGTCCTTCGAGACCATCGACAAGATGCGCCCGCCAGCTCCTACT  
 CCTCCCTCAACTCCCTCATCGGAGTTTCTTTAACAGTGTTCACACTCAGATTTGGAGAGTCTGTGCA  
 CCTGGCTGCTGACCCCTATCCAGAGTCTCGGACGTGGCCATGAAAGTACTCAACAGCATCGCCTACAAG  
 GCCACCGTGAACGCCCGCCGACGCGCTCCTGGACACCTCCTCCCTCAGCAGTCGGCCCCCGCCAGCC  
 CCACCAACAAGGGCGTGACATCCACCAGGCGGGGGCTCCCCTCCGGCTCCAGCACCAGCAGTCCAG  
 CCTGACCAACGATGTGGCCAAGCAGCCGGTCCAGCCGAGACTTGCCTTCTGGCCGGCCGGCACCACAGGC  
 CCCGCTGGGGCGCAGTACACCCCTCACTCCCACAGTTCCCCCGACACGGAAAGTGTTCGACAAGGGCC  
 CAGAGCAGACTGCGGACGACGCGGACGATGCTGCTGGACACAAAAGTTTCATCTCCGCCACGGTGCAGAC  
 GGGGTTCTGCGACTGGAGCGCCCGCTATTTGCCAGCCCGTTCATGAAGATCCGAGAAGAGCAGCACCTG  
 GAGAGTCAGATCCGCAAGGAGCGGGAGTGGCGTTCTTGCAGAACAGCCGTGTGAGGAGGAGGCCCCAGC  
 AAGTCATTGAGAAGGGCATTACGAGATTGGACGACCAAAATTTTCTGAACAGGAACCCCGCGTCCCCTC  
 TGTGGTGAATTCACCCCTTACGCGCGTGCATCGCCGTAGCCGACAAGGACAGCATCTGCTTTTGGGAC  
 TGGGAGAAAGGGGAGAAGCTGGATTATTTCCACAATGGGAACCCCTCGGTACACGAGGGTCACTGCCATGG  
 AGTATCTGAACGGCCAGGACTGCTCGTCTGCTGACGGCCACAGACGATGGTGCCATCAGGGTCTGGAA  
 GAATTTTGCTGATTTGGAAAAGAACCAGAGATGGTGACCGCGTGGCAGGGGCTCTCGGACATGCTGCCA  
 ACGACGCGAGGAGCTGGGATGGTGGTGGACTGGGAGCAGGAGACCGGCCTCCTCATGAGCTCAGGAGACG  
 TGCGGATCGTCCGGATCTGGACACAGACCGTGAAGGTGCAGGACATCCCTACGGGCGCAGACAG  
 CTGTGTGACGAGTCTGTCTGTGATTCCCACCGCTCACTCATCGTGGCTGGCCTCGGTGACGGCTCCATC  
 CGCGTCTACGACAGAAGGATGGCACTCAGCGAATGCCGTGTCATGACGTACCGGGAGCACACAGCCTGGG  
 TGGTGAAGGCCTCCCTGCAGAAGCGTCCCGACGGCCACATCGTGAGTGTGAGCGTCAATGGAGATGTGCG  
 CATCTTTGATCCCGGATGCCTGAGTCGGTAAATGTGCTTCAGATCGTGAAGGGGCTGACGGCCCTGGAC  
 ATCCACCCCAAGGCGGACCTGATCGCATGTGGCTCCGTCAATCAGTTCACCGCCATCTACAACAGCAGCG  
 GAGAGCTCATCAACAACATCAAGTACTACGACGGCTTTCATGGGCCAGCGGTGGCGCCATCAGTGCCT  
 GGCCTTCCACCCGCACTGGCCTCACCTGGCCGTGGGAAGCAACGACTACTACATCTCCGTGACTCGGTG  
 GAGAAGCGTGTGACA

ACGCGTACGCGGCCGCTCGAG – GFP Tag – GTTTAA

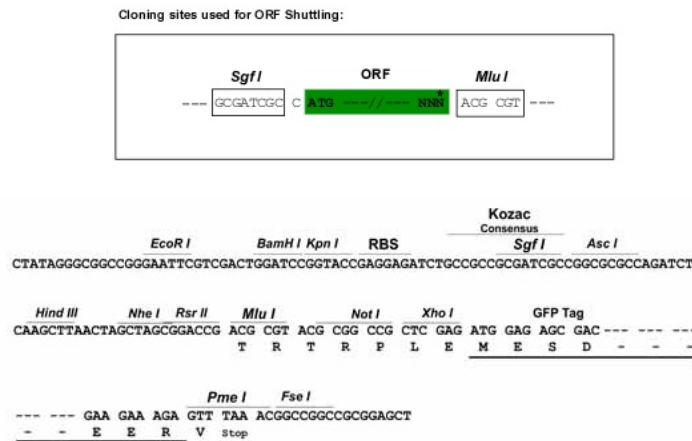
Protein Sequence: >RG222281 representing NM\_020761  
 Red=Cloning site Green=Tags(s)

```
MESEMLQSPLLGLGEEDEADLTDWNLPLAFMKKRHCEKIEGSKSLAQSWRMKDRMKTVSVALVLCCLNVGV
DPPDVVKTTPCARLECWIDPLSMGPQKALETIGANLQKQYENWQPRARYKQSLDPTVDEVKKLCTSLRRN
AKEERVLPHYNGHGVPRPTVNGEVVWFNKNYTYIPLSIYDLQWWMGSPSIFVYDCSNAGLIVKSFQKQFA
LQREQELEVAAINPNHPLAQMPLPPSMKNCIQLAACATELLPMIPDLPADLFTSCLTTPPIKIALRWFCM
QKCVSLVPGVTLDLIEKIPGRLNDRRTPLGELNWIFTAIDTIAWNVLPRLDFQKLFRODLLVASLFRNF
LLAERIMRSYNCTPVSSPRLPPTYMHAMWQAWDLAVDIDLSQLPTIIIEGTAFRHSPFFAEQLTAFQVWL
TMGVENRNPPEQLPIVLQVLLSQVHRLRALDLLGRFLDLGPWAVSLALSVMGIFPYVLKLLQSSARELRPL
LVFIWAKILAVDSSCQADLVKDNHGKHYFLSVLADPYMPAEHRTMTAFILAVIVNSYHTGQEACLGNLIA
ICLEQLNDPHPLLQVVAICLGRWQNFDSARWCGVRDSAHEKLYSLLSDPIPEVRCAAVFGTFVNGS
AERTDHSSTIDHNVAMMLAQLVSDGSPMVRKELVVALSHLVVQYESNFCTVALQFIEEEKNYALPSPATT
EGGSLTPVRDSPCTPRLRSVSSYGNIRAVATARSLNKSLLQNLSTTEESGGAVAFSPGNLSTSSASSTLG
SPENEEHILSFETIDKMRRASSYSSLSLIGVFSNSVYTQIWRVLLHLAADPYPEVSDVAMKVLNSIAYK
ATVNARPQRVLDTSSTLQSAAPSTNKGVIHQAGGSPASSTSSSSLTNDVAKQVSRDLPSPGRGTTG
PAGAQYTPHSHQFPRTRKMFDPKGPQTADDADDAAGHKSFI SATVQTGFCDWSARYFAQPVMKIPEEHD
ESQIRKEREWRF LRNSRVRRAQVVIQKGITRLDDQIFLNRNPGVPSVVKFHPFTPCIAVADKDSICFWD
WEKGEKLDYFHNGNPRYTRVTAMEYLNQDCSLLL TATDDGAI R V W K N F A D L E K N P E M V T A W Q G L S D M L P
TTRGAGMVDWEQETGLLMSSGDVRI V R I W D T D R E M K V Q D I P T G A D S C V T S L S C D S H R S L I V A G L G D G S I
RVYDRRMLSECRVMTYREHTAWVVKASLQKRPDGHIVSVVNGDVRI F D P R M P E S V N V L Q I V K G L T A L D
IHPQADLIACGSVNQFTAIYNSSGELINNIKYYDGMGQRVGAISCLAFHPHWPHLAVGSNDYIYSVYSV
EKRRV
```

TRTRPLE - GFP Tag - V

Restriction Sites: SgfI-MluI

Cloning Scheme:

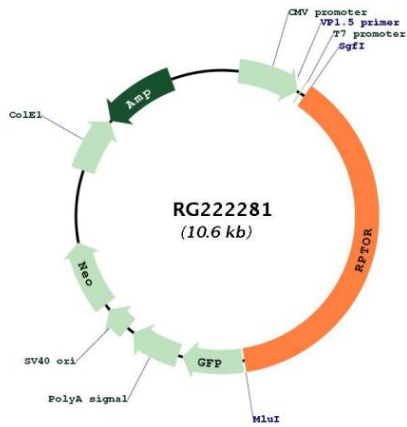


ACCN: NM\_020761

ORF Size: 4005 bp

<b>OTI Disclaimer:</b>	<p>Due to the inherent nature of this plasmid, standard methods to replicate additional amounts of DNA in E. coli are highly likely to result in mutations and/or rearrangements. Therefore, OriGene does not guarantee the capability to replicate this plasmid DNA. Additional amounts of DNA can be purchased from OriGene with batch-specific, full-sequence verification at a reduced cost. Please contact our customer care team at <a href="mailto:custsupport@origene.com">custsupport@origene.com</a> or by calling 301.340.3188 option 3 for pricing and delivery.</p> <p>The molecular sequence of this clone aligns with the gene accession number as a point of reference only. However, individual transcript sequences of the same gene can differ through naturally occurring variations (e.g. polymorphisms), each with its own valid existence. This clone is substantially in agreement with the reference, but a complete review of all prevailing variants is recommended prior to use. <a href="#">More info</a></p>
<b>OTI Annotation:</b>	This clone was engineered to express the complete ORF with an expression tag. Expression varies depending on the nature of the gene.
<b>Components:</b>	The ORF clone is ion-exchange column purified and shipped in a 2D barcoded Matrix tube containing 10ug of transfection-ready, dried plasmid DNA (reconstitute with 100 ul of water).
<b>Reconstitution Method:</b>	<ol style="list-style-type: none"> <li>1. Centrifuge at 5,000xg for 5min.</li> <li>2. Carefully open the tube and add 100ul of sterile water to dissolve the DNA.</li> <li>3. Close the tube and incubate for 10 minutes at room temperature.</li> <li>4. Briefly vortex the tube and then do a quick spin (less than 5000xg) to concentrate the liquid at the bottom.</li> <li>5. Store the suspended plasmid at -20°C. The DNA is stable for at least one year from date of shipping when stored at -20°C.</li> </ol>
<b>RefSeq:</b>	<a href="#">NM_020761.1</a> , <a href="#">NP_065812.1</a>
<b>RefSeq Size:</b>	6431 bp
<b>RefSeq ORF:</b>	4008 bp
<b>Locus ID:</b>	57521
<b>UniProt ID:</b>	<a href="#">Q8N122</a>
<b>Cytogenetics:</b>	17q25.3
<b>Domains:</b>	WD40
<b>Protein Pathways:</b>	Insulin signaling pathway, mTOR signaling pathway
<b>Gene Summary:</b>	This gene encodes a component of a signaling pathway that regulates cell growth in response to nutrient and insulin levels. The encoded protein forms a stoichiometric complex with the mTOR kinase, and also associates with eukaryotic initiation factor 4E-binding protein-1 and ribosomal protein S6 kinase. The protein positively regulates the downstream effector ribosomal protein S6 kinase, and negatively regulates the mTOR kinase. Multiple transcript variants encoding different isoforms have been found for this gene. [provided by RefSeq, Sep 2009]

Product images:



Circular map for RG222281