

Product datasheet for **RG222263**

Annexin VIII (ANXA8) (NM_001040084) Human Tagged ORF Clone

Product data:

| | |
|---------------------------|--|
| Product Type: | Expression Plasmids |
| Product Name: | Annexin VIII (ANXA8) (NM_001040084) Human Tagged ORF Clone |
| Tag: | TurboGFP |
| Symbol: | Annexin VIII |
| Synonyms: | ANX8; CH17-360D5.2 |
| Mammalian Cell Selection: | Neomycin |
| Vector: | pCMV6-AC-GFP (PS100010) |
| E. coli Selection: | Ampicillin (100 ug/mL) |
| ORF Nucleotide Sequence: | >RG222263 representing NM_001040084 Red=Cloning site Blue=ORF Green=Tags(s) |

TTTTGTAATACGACTCACTATAGGGCGGCCGGAATTCGTCGACTGGATCCGGTACCGAGGAGATCTGCC
GCC**CGATCGCC**

ATGGCCTGGTGGAAATCCTGGATTGAACAGGAGGGTGTACAGTGAAGAGCAGCTCCCACTTCAACCCAG
ACCCTGATGCAGAGACCCTCTACAAAGCCATGAAGGGATCGGGACCAACGAGCAGGCTATCATCGATGT
GCTCACCAAGAGAAGCAACACGCAGCGGCAGCAGATCGCCAAGTCCTTCAAGGCTCAGTTCGGCAAGGAC
CTCACTGAGACCTTGAAGTCTGAGCTCAGTGGCAAGTTTGAGAGGCTCATTGTGGCCCTTATGTACCCGC
CATAACAGATACGAAGCCAAGGAGCTGCATGACGCCATGAAGGGCTTAGGAACCAAGGAGGGTGTGCATCAT
TGAGATCCTGGCCTCTCGGACCAAGAACCAGCTGCGGGAGATAATGAAGGCGTATGAGGAAGACTATGGG
TCCAGCCTGGAGGAGGACATCCAAGCAGACACAAGTGGCTACCTGGAGAGGATCCTGGTGTGCCTCCTGC
AGGGCAGCAGGGATGATGTGAGCAGCTTTGTGGACCCAGGACTGGCCCTCCAAGACGCACAGGATCTGTA
TGCGGCAGGCGAGAAGATTCTGGGGACTGATGAGATGAAATTCATCACCATCCTGTGCACGCGCAGTGCC
ACTCACCTGTGAGAGTGTGAAAGATGAGAAAATTGCCAACAAGAGCATTGAGGACAGCATCAAGA
GTGAGACCCATGGCTCACTGGAGGAGCCATGCTCACTGTGGTGAATGCACCCAAAACCTCCACAGCTA
CTTTGCAGAGAGACTCTACTATGCCATGAAGGGAGCAGGGACGCGTGTGGGACCTGATAAGAAACATC
GTTTCAAGGAGCGAGATTGACTTAAATCTTATCAAATGTCACCTTCAAGAAGATGTACGGCAAGACCCTCA
GCAGCATGATCATGGAAGACACCAGCGGTGACTACAAGAACGCCCTGCTGAGCCTGGTGGCAGCGACCC
C

AG**CGGACCG**ACGCGTACGCGGCCGCTCGAG - GFP Tag - GTTTAA



[View online »](#)

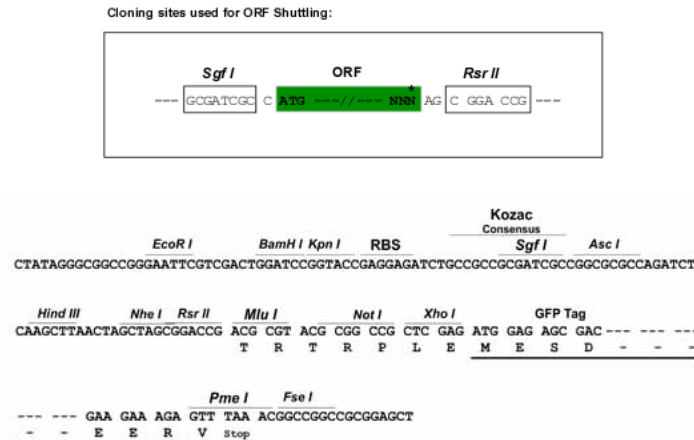
Protein Sequence: >RG222263 representing NM_001040084
 Red=Cloning site Green=Tags(s)

MAWWKSWIEQEGVTVKSSSHFNPDPAETLYKAMKIGITNEQAIIDVLTKRSNTQRQQIAKSFKAQFGKD
 LTETLKSELSGKFERLIVALMYPPYRYEAKELHDAMKGLGTEKGVIEILASRTKNQLREIMKAYEEDYG
 SSLEEDIQADTSGYLERILVCLLQGSRDDVSSFVDPGLALQDAQDLAAGEKIRGTDEMKFITILCTRSA
 THLLRVFEEYEKIANKSIEDSIKSETHGSLEEAMLTVVKCTQNLHSYFAERLYYAMKGAGTRDGTLIRNI
 VSRSEIDLNLKCHFKMYGKTLSSMIMEDTSGDYKNALLSLVGSDP

SGPTRRRLE - GFP Tag - V

Restriction Sites: SgfI-RsrII

Cloning Scheme:



ACCN: NM_001040084

ORF Size: 981 bp

OTI Disclaimer: The molecular sequence of this clone aligns with the gene accession number as a point of reference only. However, individual transcript sequences of the same gene can differ through naturally occurring variations (e.g. polymorphisms), each with its own valid existence. This clone is substantially in agreement with the reference, but a complete review of all prevailing variants is recommended prior to use. [More info](#)

OTI Annotation: This clone was engineered to express the complete ORF with an expression tag. Expression varies depending on the nature of the gene.

Components: The ORF clone is ion-exchange column purified and shipped in a 2D barcoded Matrix tube containing 10ug of transfection-ready, dried plasmid DNA (reconstitute with 100 ul of water).

Reconstitution Method:

1. Centrifuge at 5,000xg for 5min.
2. Carefully open the tube and add 100ul of sterile water to dissolve the DNA.
3. Close the tube and incubate for 10 minutes at room temperature.
4. Briefly vortex the tube and then do a quick spin (less than 5000xg) to concentrate the liquid at the bottom.
5. Store the suspended plasmid at -20°C. The DNA is stable for at least one year from date of shipping when stored at -20°C.

RefSeq: [NM_001040084.3](#)

RefSeq Size: 2070 bp

RefSeq ORF: 984 bp

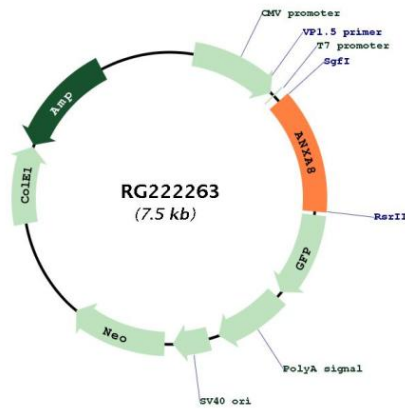
Locus ID: 653145

UniProt ID: [P13928](#)

Cytogenetics: 10q11.22

Gene Summary: This gene encodes a member of the annexin family of evolutionarily conserved Ca²⁺ and phospholipid binding proteins. The encoded protein may function as an anticoagulant that indirectly inhibits the thromboplastin-specific complex. Overexpression of this gene has been associated with acute myelocytic leukemia. A highly similar duplicated copy of this gene is found in close proximity on the long arm of chromosome 10. [provided by RefSeq, Jul 2008]

Product images:



Circular map for RG222263