

## Product datasheet for **RG222259**

### **FKRP (NM\_001039885) Human Tagged ORF Clone**

#### **Product data:**

Product Type:	Expression Plasmids
Product Name:	FKRP (NM_001039885) Human Tagged ORF Clone
Tag:	TurboGFP
Symbol:	FKRP
Synonyms:	FKTR; LGMD2I; LGMDR9; MDC1C; MDDGA5; MDDGB5; MDDGC5
Mammalian Cell Selection:	Neomycin
Vector:	pCMV6-AC-GFP (PS100010)
E. coli Selection:	Ampicillin (100 ug/mL)



[View online »](#)

**ORF Nucleotide Sequence:**

>RG222259 representing NM\_001039885  
 Red=Cloning site Blue=ORF Green=Tags(s)

TTTTGTAATACGACTCACTATAGGGCGGCCGGGAATTCGTCGACTGGATCCGGTACCGAGGAGATCTGCC  
 GCC**CGGATCGCC**

ATGCGGCTCACCCGCTGCCAGGCTGCCCTGGCGGCCGCCATCACCTCAACCTTCTGGCTCTTCTATG  
 TCTCGTGGCTGCAGCACCAGCCTAGGAATTCCTGGGCCCGGGGGCCCGTCTGCTGCCCGCCC  
 CCGTGTACACCGTCTGGTGGGGAGTTCGAGGCATTTGACAACGCGGTGCCCGAGCTGGTAGACTCCTTC  
 CTGCAGCAAGACCCAGCCAGCCGCTGGTGGTGGCAGCCGACACGCTCCCTACCCGCCCTGGCCCTGC  
 CCCGCATCCCAACGTGCGTCTGGCGTCTCCAGCCGCCCTGGACCGCCAGCCGAGCCTCGCGCCC  
 GGAGACCTACGTGGCCACCGAGTTTGTGGCCCTAGTACCTGATGGGGCGCGGGCTGAGGCACCTGGCCTG  
 CTGGAGCGCATGGTGGAGGCGCTCCGCGCAGGAAGCGCACGTCTGGTGGCCGCCCGGTTGCCACGGCCA  
 ACCCTGCCAGGTGCTGGCCCTGAACGTACGCTGCGAGAGTGGACCGCCCGCTATGGCGCAGCCCCGC  
 CGGCCCCCGCTGCGACGCCCTGGACGGAGATGCTGTGGTCTCTGCGCGCCCGGACCTCTTCAACCTC  
 TCGGCGCCCTGGCCCGCGGTGGGCACCAGCCTCTTTCTGCAGACCGCCCTTCGCGGGTGGGCGGTGC  
 AGCTGCTGGACTTGACCTTCGCCCGGGCGGCCAGCCCCGCTGGCCACGGCCACGCGCGCTGGAAGGC  
 TGAGCGCAGGGACGCGCTCGCGGGCGGGCGTCTCCGCGCGCTGGGCATCCGCCTAGTGAGCTGGGAA  
 GGCGGGCGGTGGAGTGGTTCCGGCTGCAACAAGGAGACCAGCGCTGCTTCGGAACCGTGGTGGGCGACA  
 CGCCCGCTACCTCTACGAGGAGCGTGGACGCCCCCTGCTGCTGCGCGCGTGCAGGAGACCGCCCG  
 CTATGTGGTGGGCGTCTGGAGGCTGCGGGCGTGCCTACTGGCTCGAGGGCGGCTACTGCTGGGGGCC  
 GCCCGCCACGGGACATCATCCATGGGACTACGACGTGGACCTGGGCATCTACTGGAGGACGTGGGCA  
 AGTTCGAGCAGCTGCGGGGGCAGAGGCGGCTCGGTGGTGGATGAGCGCGGCTTCGATGGGAGAAGGC  
 GGTTCGAGGGCGACTTTTTCCGCGTGCAGTACAGCGAAAGCAACCACTTGCACGTGGACCTGTGGCCCTC  
 TACCCCGCAATGGCGTCATGACCAAGGACACGTGGCTGGACCACCGGCAGGATGTGGAGTTTCCGAGC  
 ACTTCTGCAGCCGCTGGTGGCCCTGCCCTTTCGCGGCTTCGTGGCGCAGGCGCCTAACAACTACCGCCG  
 CTTCTGGAGCTCAAGTTCGGGCCCGGGTTCATCGAGAACCCCAAGTACCCCAACCGGCGACTGCTGAGT  
 CTGACGGGAAGCGGC

**ACGCGTACGCGGCCGCTCGAG** – GFP Tag – GTTTAA

**Protein Sequence:**

>RG222259 representing NM\_001039885  
 Red=Cloning site Green=Tags(s)

MRLTRCQAALAAAITLNLVLFYVSWLQHQPNSRARGPRRASAAGPRVTVLVREFEAFDNAVPELVDSF  
 LQQDPAQPVVVAADTLPPPLALPRIIPNVRLALLQPALDRPAAASRPETYVATEFVALVPDGAAREAPGL  
 LERMVEALRAGSARLVAAPVATANPARCLALNVSLREWTARYGAAPAAPRCDALDGDVAVLLRARDLFNL  
 SAPLARPVGTSFLQALRGWAVQLLDLTFAAARQPPLATAHARWKAEREGRARRAALLRALGIRLVSWE  
 GGRLEWFGCNKETTTRCFGTVVGDTPAYLYEERWTPPCCLRALRETARYVVGVLEAAGVRYWLEGGSLIGA  
 ARHGDIIIPWDYDVLGIYLEDVGNCEQLRGAEAGSVVDERGFVWEKAVEGDFFRVQYSES NHLHVDLWPF  
 YPRNGVMTKDWTLDHRQDVEFPEHFLQPLVPLPFAGFVAQAPNNYRRFLELKFPGVVIENPQYPNPALLS  
 LTGSG

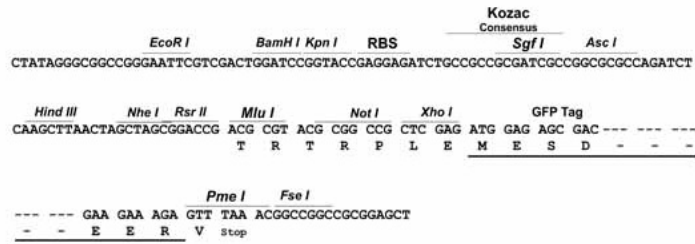
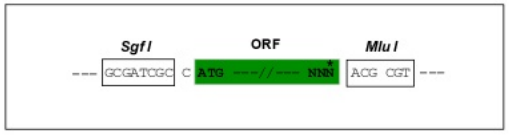
**TRTRPLE** – GFP Tag – V

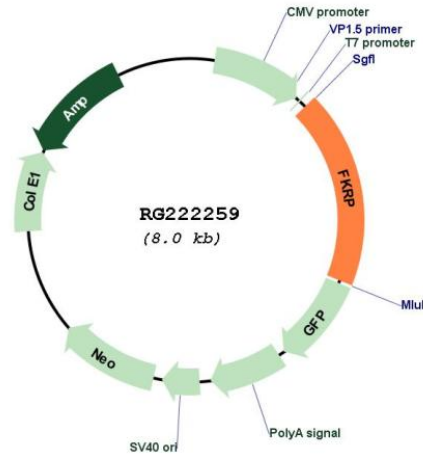
**Restriction Sites:**

Sgfl-MluI

Cloning Scheme:

Cloning sites used for ORF Shutting:



**Plasmid Map:**


**ACCN:** NM\_001039885

**ORF Size:** 1485 bp

**OTI Disclaimer:** The molecular sequence of this clone aligns with the gene accession number as a point of reference only. However, individual transcript sequences of the same gene can differ through naturally occurring variations (e.g. polymorphisms), each with its own valid existence. This clone is substantially in agreement with the reference, but a complete review of all prevailing variants is recommended prior to use. [More info](#)

**OTI Annotation:** This clone was engineered to express the complete ORF with an expression tag. Expression varies depending on the nature of the gene.

**Components:** The ORF clone is ion-exchange column purified and shipped in a 2D barcoded Matrix tube containing 10ug of transfection-ready, dried plasmid DNA (reconstitute with 100 ul of water).

**Reconstitution Method:**

1. Centrifuge at 5,000xg for 5min.
2. Carefully open the tube and add 100ul of sterile water to dissolve the DNA.
3. Close the tube and incubate for 10 minutes at room temperature.
4. Briefly vortex the tube and then do a quick spin (less than 5000xg) to concentrate the liquid at the bottom.
5. Store the suspended plasmid at -20°C. The DNA is stable for at least one year from date of shipping when stored at -20°C.

**RefSeq:** [NM\\_001039885.3](#)

**RefSeq Size:** 3568 bp

**RefSeq ORF:** 1488 bp

**Locus ID:** 79147

**UniProt ID:** [Q9H9S5](#)

**Cytogenetics:** 19q13.32

**Protein Families:** Transmembrane

**Gene Summary:** This gene encodes a protein which is targeted to the medial Golgi apparatus and is necessary for posttranslational modification of dystroglycan. Mutations in this gene have been associated with congenital muscular dystrophy, cognitive disability, and cerebellar cysts. Several alternatively spliced transcript variants of this gene have been described, but the full-length nature of some of these variants has not been determined. [provided by RefSeq, Oct 2008]