

Product datasheet for **RG22253**

CIITA (NM_000246) Human Tagged ORF Clone

Product data:

Product Type:	Expression Plasmids
Product Name:	CIITA (NM_000246) Human Tagged ORF Clone
Tag:	TurboGFP
Symbol:	CIITA
Synonyms:	C2TA; CIITAIV; MHC2TA; NLRA
Mammalian Cell Selection:	Neomycin
Vector:	pCMV6-AC-GFP (PS100010)
E. coli Selection:	Ampicillin (100 ug/mL)
ORF Nucleotide Sequence:	>RG22253 representing NM_000246 Red=Cloning site Blue=ORF Green=Tags(s)

TTTTGTAATACGACTCACTATAGGGCGGCCGGAATTCGTCGACTGGATCCGGTACCGAGGAGATCTGCC
GCC**CGATCGCC**

ATGCGTTGGCTCCACGCCCTGCTGGGTCCTACCTGTCAGAGCCCCAAGGCAGCTCACAGTGTGCCA
CCATGGAGTTGGGGCCCCTAGAAGGTGGCTACCTGGAGCTTCTAACAGCGATGCTGACCCCTGTGCC
CTACCCTTCTATGACCAGATGGACCTGGCTGGAGAAGAAGAGATTGAGCTCTACTCAGAACCCGACACA
GACACCATCAACTGCGACCACTGACGAGCTGTTGTGTGACATGGAAGGTGATGAAGAGACCAGGGAGG
CTTATGCCAATATCGCGAACTGGACAGTATGTCTCCAGGACTCCAGCTGGAGGGCCTGAGCAAGGA
CATTTTCAAGCACATAGGACCAGATGAAGTGATCGGTGAGAGTATGGAGATGCCAGCAGAAGTTGGGCAG
AAAAGTCAGAAAAGACCTTCCCAGAGGAGCTTCCGGCAGACCTGAAGCACTGGAAGCCAGCTGAGCCCC
CCACTGTGGTACTGGCAGTCTCCTAGTGGGACCAGTGAAGCACTGCTCCACCCTGCCCTGCCTGCCACT
GCCTGCGCTGTTCAACCAGGAGCCAGCCTCCGGCCAGATGCGCCTGGAGAAAACCGACCAGATTTCCATG
CCTTTCTCCAGTTCCTCGTTGAGCTGCCTGAATCTCCCTGAGGGACCCATCCAGTTTGTCCCCACCATCT
CCACTCTGCCCATGGGCTCTGGCAAATCTCTGAGGCTGGAACAGGGGTCTCCAGTATATTCATCTACCA
TGGTGAGGTGCCCCAGGCCAGCAAGTACCCCTCCAGTGGATTCACTGTCCACGGCCTCCCAACATCT
CCAGACCGGCCAGGCTCCACCAGCCCTTCGCTCCATCAGCCACTGACCTGCCAGCATGCCTGAACCTG
CCCTGACCTCCCGAGCAACATGACAGAGCACAAGACGTCCTCCCAACCAATGCCCGGCAGCTGGAGAGGT
CTCCAACAAGCTTCCAAAATGGCCTGAGCCGGTGGAGCAGTTCTACCGCTCACTGCAGGACACGTATGGT
GCCGAGCCCGCAGGCCCGGATGGCATCCTAGTGGAGGTGGATCTGGTGCAGGCCAGGCTGGAGAGGAGCA
GCAGCAAGAGCCTGGAGCGGAACTGGCCACCCCGGACTGGGCAGAACGGCAGCTGGCCAAAGGAGGCC
GGCTGAGGTGCTGTTGGTGCCAAGGAGACCCGGCGCCGCTGAGACACGAGTATTGCTGTGCTGGGC
AAAGCTGGTCAGGGCAAGAGCTATTGGGCTGGGGCAGTGAACCGTCCGGGGATGCCTATGGCCTGCAGGA
AGTACGACTTTGCTTCTGTCCCTGCCATTGCTTGAACCGTCCGGGGATGCCTATGGCCTGCAGGA
TCTGCTTCTCCCTGGGCCACAGCCACTCGTGGCGCCGATGAGGTTTCAGCCACATCTGAAGAGA



[View online >](#)

CCTGACCGCGTTCTGCTCATCTAGACGCCTTCGAGGAGCTGGAAGCGCAAGATGGCTTCTGCACAGCA
 CGTGCGGACCGGCACCGCGGAGCCCTGCTCCCTCCGGGGGCTGCTGGCCGGCCTTTTCCAGAAGAAGCT
 GCTCCGAGGTTGCACCCTCTCTCACAGCCCGGCCCCGGGGCCGCTGGTCCAGAGCCTGAGCAAGGCC
 GACGCCATTTGAGCTGTCGGCTTCCATGGAGCAGGCCAGGCATACGTGATGCGCTACTTTGAGA
 GCTCAGGGATGACAGAGCACAAGACAGAGCCCTGACGCTCTCCGGGACCGGCCACTTCTTCTCAGTCA
 CAGCCACAGCCCTACTTTGTGCCGGCAGTGTGCCAGCTCTCAGAGGCCCTGCTGGAGCTTGGGGAGGAC
 GCCAAGCTGCCCTCCACGCTCACGGGACTCTATGTCCGCTGCTGGCCGCTGCAGCCCTGCAGCCCTCC
 CCGGGCCCTGGCAGAGCTGGCCAAGCTGGCCTGGGAGCTGGGCCGAGACATCAAAGTACCCTACAGGA
 GGACCAGTCCCATCCGACAGCTGAGGACCTGGGCGATGGCCAAAGGCTTAGTCCAACACCCACCGCGG
 GCCGACAGTCCGAGCTGGCCTTCCCCAGCTTCTCTGCAATGCTTCTGGGGCCCTGTGGTGGCTC
 TGAGTGGCGAAATCAAGGACAAGGAGCTCCCGCAGTACCTAGCATTGACCCCAAGGAAGAAGAGGCCCTA
 TGACAACTGGCTGGAGGGCGTCCACGCTTTCTGGCTGGGCTGATCTTCCAGCCTCCCGCCCGCTGCCTG
 GGAGCCCTACTCGGGCCATCGCGGCTGCCTCGGTGGACAGGAAGCAGAAGGTGCTTGCAGGTACCTGA
 AGCGGCTGCAGCCGGGACACTCGGGCGCGCAGCTGCTTGAGCTGCTGCACTGCGCCACGAGGCCGA
 GGAGGCTGGAATTTGGCAGCACGTGGTACAGGAGCTCCCGGCCGCTCTTTTTCTGGGCACCCGCTC
 ACGCCTCCTGATGCACATGTACTGGGCAAGGCCTTGGAGGCGGGGCCAAGACTTCTCCCTGGACCTCC
 GCAGCACTGGCATTGTCCTCTGGATTGGGGAGCCTCGTGGGACTCAGCTGTGTACCCGTTTCAGGGC
 TGCTTGGAGCAGACGGTGGCGCTGTGGGAGTCCCTGCGGCAGCATGGGGAGACCAAGCTACTTCAGGCA
 GCAGAGGAGAAGTTCACCATCGAGCCTTCAAAGCCAAGTCCCTGAAGGATGTGGAAGACCTGGGAAAGC
 TTGTGCAGACTCAGAGGACGAGAAGTTCCTCGGAAGACACAGCTGGGGAGCTCCCTGCTGTTCCGGACCT
 AAAGAACTGGAGTTTGCCTGGGCCCTGTCTCAGGCCCCAGGCTTTCCCAAAGTGGTGGGATCCTC
 ACGGCCCTTCTCCCTGCAGCATCTGGACCTGGATGCGCTGAGTGAGAACAAGATCGGGGACGAGGGTG
 TCTCGCAGCTCAGCCACCTTCCCCAGCTGAAGTCTTGGAAACCTCAATCTGTCCAGAACAACACT
 CACTGACCTGGGTGCTACAAACTCGCCGAGCCCTGCCTTGCCTCGCTGCATCCCTGCTCAGGCTAAGC
 TTGTACAATAACTGCATCTGCGACGTGGGAGCCGAGAGCTTGGCTCGTGTGCTTCCGGACATGGTGTCCC
 TCCGGGTGATGGACGTCCAGTACAACAAGTTCACGGCTGCCGGGGCCAGCAGCTCGCTGCCAGCCTTCG
 GAGGTGCTCATGTGGAGACGCTGGCGATGTGGACGCCACCATCCCATCAGTGTCCAGGAACACCTG
 CAACAACAGGATTCACGGATCAGCCTGAGA

ACGCGTACGCGGCCGCTCGAG – GFP Tag – GTTTAA

Protein Sequence:

>RG222253 representing NM_000246
 Red=Cloning site Green=Tags(s)

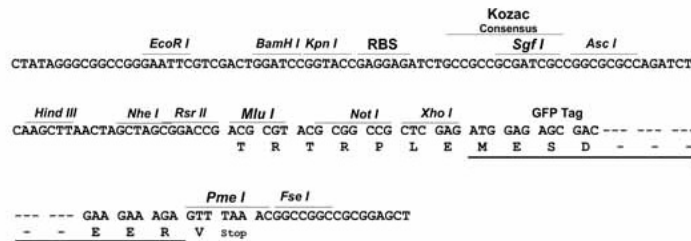
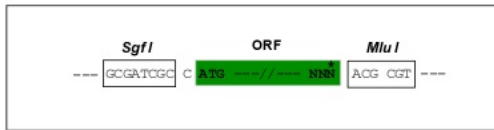
MRCLAPRPAGSYLSEPPQSSQCATMELGPLLEGGYLELLNSDADPLCLYHFYDQMDLAGEEEIELYSEPD
 DTINCDQFSRLLCDMEGDEETREAYANIAELDQYVFQDSQLEGLSKDIFKHIGPDEVIAGESMEMPAE
 VQG KSKRPFPEELPADLKHWPAPPTVVTGSLLVGPVSDCSTLPLPALFNQEPASGQMRLEKTDQIPM
 PFSSSSLSCLNLEGPPIQFVPTISTLPHGLWQISEAGTGVSSIFYHGEVQASQVPPPSGFTVHGLPTS
 PDRPGSTSPFAPSATDLPSMPEPALTSRANMTEHKTSPQTCPAAGEVSNKLPKWPEPVEQFYRSLQD
 TYG AEPAGPDGILVEVDLVQARLERSSSKSLERELATPDWAERQLAQGGLAEVLLAAKEHRRPRETR
 VIAVLG KAGQGKSYWAGAVSRWACGRLPQYDFVFSVPCHLNRPDAYGLQDLFSLGPQPLVAAD
 EVFSHILKR PDRVLLILDAFEELAQDGLHSTCGPAPAEPCLRGLLAGLFQKLLRGCTLLL
 TARPRGRVLVQSLSKA DALFELSGFSMEQAQAYVMRYFESSGMTEHQDRALTLRDRPLLLSHS
 HSPTLCRAVCQLSEALLELGED AKLPSTLTGLYVGLLGRAALDSPPGALAEAKLAWELGRRHQ
 STLQEDQFPSADVRTWAMAKGLVQHPPR AAESLAFPSFLLQCFLGALWLALSGEIKDKELP
 QYLALTPRKKRPPYDNWLEGVPRFLAGLIFQPPARCL GALLGPSAAASVDRKQKVLARYL
 KRLQPGTLRARQLLELLHCAHEAEEAGIWHVQELPGRLSFLGTRL TPPDAHVLGKALEAAGQ
 DFLDLRSTGICPSGLSGLVGLSCVTRFRAALSDTVALWESLRQHGETKLLQA AEEKFTIEP
 FKAKSLKDVEDLGKLVQTRRSSSEDTAGELPAVRDLKKLEFALGPVSGPQAFPKLVRI
 L TAFSSLQHLDLDALSENKIGDEGVQLSATFPQLSLETNLNQNNITDLGAYKLAELPSLAAS
 LLRLS LYNVICDVGAESLARVLPDMVSLRVMQVQYNKFTAAGAQQLAASLRRCPHVETLAMW
 TPTIPFSVQEHL QQQDSRISLR

TRTRPLE – GFP Tag – V

Restriction Sites: SgfI-MluI

Cloning Scheme:

Cloning sites used for ORF Shuttling:



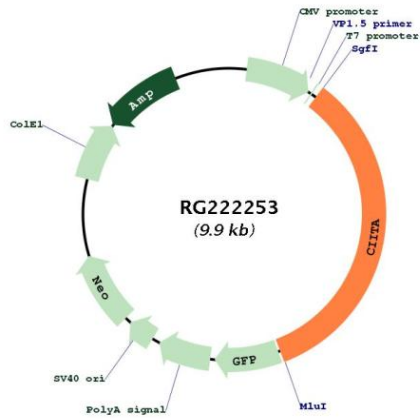
ACCN: NM_000246

ORF Size: 3390 bp

OTI Disclaimer: The molecular sequence of this clone aligns with the gene accession number as a point of reference only. However, individual transcript sequences of the same gene can differ through naturally occurring variations (e.g. polymorphisms), each with its own valid existence. This clone is substantially in agreement with the reference, but a complete review of all prevailing variants is recommended prior to use. [More info](#)

OTI Annotation:	This clone was engineered to express the complete ORF with an expression tag. Expression varies depending on the nature of the gene.
Components:	The ORF clone is ion-exchange column purified and shipped in a 2D barcoded Matrix tube containing 10ug of transfection-ready, dried plasmid DNA (reconstitute with 100 ul of water).
Reconstitution Method:	<ol style="list-style-type: none">1. Centrifuge at 5,000xg for 5min.2. Carefully open the tube and add 100ul of sterile water to dissolve the DNA.3. Close the tube and incubate for 10 minutes at room temperature.4. Briefly vortex the tube and then do a quick spin (less than 5000xg) to concentrate the liquid at the bottom.5. Store the suspended plasmid at -20°C. The DNA is stable for at least one year from date of shipping when stored at -20°C.
RefSeq:	NM_000246.2 , NP_000237.1
RefSeq Size:	4661 bp
RefSeq ORF:	3393 bp
Locus ID:	4261
UniProt ID:	P33076
Cytogenetics:	16p13.13
Protein Pathways:	Antigen processing and presentation, Primary immunodeficiency
Gene Summary:	This gene encodes a protein with an acidic transcriptional activation domain, 4 LRRs (leucine-rich repeats) and a GTP binding domain. The protein is located in the nucleus and acts as a positive regulator of class II major histocompatibility complex gene transcription, and is referred to as the "master control factor" for the expression of these genes. The protein also binds GTP and uses GTP binding to facilitate its own transport into the nucleus. Once in the nucleus it does not bind DNA but rather uses an intrinsic acetyltransferase (AT) activity to act in a coactivator-like fashion. Mutations in this gene have been associated with bare lymphocyte syndrome type II (also known as hereditary MHC class II deficiency or HLA class II-deficient combined immunodeficiency), increased susceptibility to rheumatoid arthritis, multiple sclerosis, and possibly myocardial infarction. Several transcript variants encoding different isoforms have been found for this gene. [provided by RefSeq, Nov 2013]

Product images:



Circular map for RG222253