

Product datasheet for **RG222243**

TMEM40 (NM_018306) Human Tagged ORF Clone

Product data:

Product Type: Expression Plasmids
Product Name: TMEM40 (NM_018306) Human Tagged ORF Clone
Tag: TurboGFP
Symbol: TMEM40
Mammalian Cell Selection: Neomycin
Vector: pCMV6-AC-GFP (PS100010)
E. coli Selection: Ampicillin (100 ug/mL)
ORF Nucleotide Sequence: >RG222243 representing NM_018306
Red=Cloning site Blue=ORF Green=Tags(s)

TTTTGTAATACGACTCACTATAGGGCGGCCGGAATTCGTCGACTGGATCCGGTACCGAGGAGATCTGCC
GCC**CGATCGCC**

ATGGAGACTTCAGCATCCTCCTCCCAGCCTCAGGACAACAGTCAAGTCCACAGAGAAACAGAAGATGTAG
ACTATGGAGAGACAGATTTCCACAAGCAAGATGGGAAGCTGGACTCTTTTCCCAAGAACATATGAGAG
AAACAAGTCTTCTCCTCCTCCTCCTCCTCCTCCTCCTCCTCCTCCTCCTCCTCCTCCTCCTCCTCCTCA
GAGAGCAATGATGAGGACCAGCAACCCAGAGCAACCCGAAAACATCGACGGAGCCTGGGGCTGGATACC
CCCACGGGAACGGCTCACCCGGTCTGGGCATGGGGAGCCTGACGTTTTGAAGGATGAGTCAACTCTA
TGGAGATGCTCCTGGAGAGGTGGTACCCTCTGGGAATCAGGACTCCGAAGGAGAGGCTCTGACCCAGCA
AGTGGAGAAGTGGAGGCCTCTCAGTTAAGAAGACTGAATATAAGAAAGATGATGAGTTTTTCCATTTG
TCCTCCTGTGCTTTGCCATCGGGCCTTGCTGGTGTGTTACTACTATTACGCAGACTGGTTCATGTCTCT
TGGGGTCGGCCTGCTCACCTTCGCCTCCCTGAAACCGTTGGCATCTACTTCGGACTAGTGTACCGTATC
CACAGCGTCTCAAGGCTTCATCCCCCTCTCCAGAAGTTTAGGCTGACAGGGTTCAGGAAGACTGAC

ACGCGTACGCGGCCGCTCGAG - GFP Tag - GTTTAA

Protein Sequence: >RG222243 representing NM_018306
Red=Cloning site Green=Tags(s)

METSASSSQPDNSQVHRETEDVDYGETDFHKQDGKAGLFSQEQYERNKSSSSSSSSSSSSSSSSSSSSSS
ESNDEDQPPRATGKHRRSLGAGYPHGNGSPGPHGEPDVLKDELQLYGDAPGEVVPSEGLRRRGSDPA
SGEVEASQLRRLNIKKDDEFFHFVLLCFAIGALLVCYHYADWFMSLGVLLTFASLETVGIYFGLVYRI
HSVLQGFIPLFQKFRLTGFRKTD

TRTRPLE - GFP Tag - V

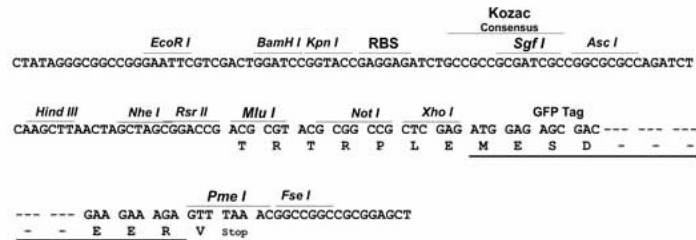
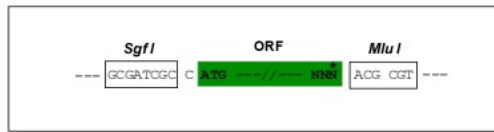


[View online »](#)

Restriction Sites: SgfI-MluI

Cloning Scheme:

Cloning sites used for ORF Shutting:



ACCN: NM_018306

ORF Size: 699 bp

OTI Disclaimer: The molecular sequence of this clone aligns with the gene accession number as a point of reference only. However, individual transcript sequences of the same gene can differ through naturally occurring variations (e.g. polymorphisms), each with its own valid existence. This clone is substantially in agreement with the reference, but a complete review of all prevailing variants is recommended prior to use. [More info](#)

OTI Annotation: This clone was engineered to express the complete ORF with an expression tag. Expression varies depending on the nature of the gene.

Components: The ORF clone is ion-exchange column purified and shipped in a 2D barcoded Matrix tube containing 10ug of transfection-ready, dried plasmid DNA (reconstitute with 100 ul of water).

Reconstitution Method:

1. Centrifuge at 5,000xg for 5min.
2. Carefully open the tube and add 100ul of sterile water to dissolve the DNA.
3. Close the tube and incubate for 10 minutes at room temperature.
4. Briefly vortex the tube and then do a quick spin (less than 5000xg) to concentrate the liquid at the bottom.
5. Store the suspended plasmid at -20°C. The DNA is stable for at least one year from date of shipping when stored at -20°C.

RefSeq: [NM_018306.4](#)

RefSeq Size: 1710 bp

RefSeq ORF: 702 bp

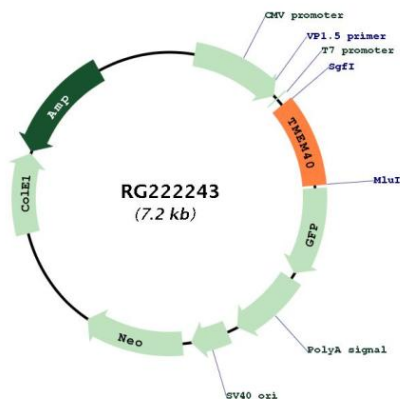
Locus ID: 55287

UniProt ID: [Q8WWA1](#)

Cytogenetics: 3p25.2

Protein Families: Transmembrane

Product images:



Circular map for RG222243