

Product datasheet for **RG222239**

DMAP1 (NM_019100) Human Tagged ORF Clone

Product data:

Product Type:	Expression Plasmids
Product Name:	DMAP1 (NM_019100) Human Tagged ORF Clone
Tag:	TurboGFP
Symbol:	DMAP1
Synonyms:	DNMAP1; DNMTAP1; EAF2; MEAF2; SWC4
Mammalian Cell Selection:	Neomycin
Vector:	pCMV6-AC-GFP (PS100010)
E. coli Selection:	Ampicillin (100 ug/mL)



[View online »](#)

ORF Nucleotide Sequence:

>RG222239 representing NM_019100
 Red=Cloning site Blue=ORF Green=Tags(s)

TTTTGTAATACGACTCACTATAGGGCGGCCGGAATTCGTCGACTGGATCCGGTACCGAGGAGATCTGCC
 GCC**CGGATCGCC**

ATGGCTACGGGCGGGATGTACGGGACATTCTAGAACTCGGGGTCCAGAAGGGGATGCAGCCTCTGGGA
 CCATCAGCAAGAAGGACATTATCAACCCGACAAGAAAAATCCAAGAAGTCTCTGAGACTGACTTT
 CAAGAGGCCCGAGGGCATGCACCGGAAGTCTATGCCTTGCTCTACTCTGACAAGAAGGTGCACCCCCA
 CTGCTACCCAGTGACTGGCCAGGGATACCGTACAGTGAAGGCCAAGTTGGGCTCCAAGAAGGTGCGGC
 CTTGGAAGTGGATGCCATTACCAACCCGGCCCGAAGGACGGAGCAATGTTCTTCCACTGGCGACTGC
 AGCGGAGGAGGGCAAGGACTACCCCTTTGCCAGGTTCAATAAGACTGTGCAGGTGCCTGTGTACTCGGAG
 CAGGAGTACCAGCTTTATCTCCACGATGATGCTGGACTAAGGCAGAACTGACCACCTCTTTGACCTCA
 GCCGCCGCTTTGACCTGCGTTTTGTTGTTATCCATGACCGGTATGACCACCAGCAGTTCAAGAAGCGTTC
 TGTGGAAGACCTGAAGGAGCGGTACTACCACATCTGTGCTAAGCTTGCCAACGTGCGGGCTGTGCCAGGC
 ACAGACCTTAAGATACAGTATTTGATGCTGGGCACGAACGACGGCGGAAGGAACAGCTTGAGCGTCTCT
 ACAACCGACCCAGAGCAGGTGGCAGAGGAGGAGTACCTGCTACAGGAGCTGCGCAAGATTGAGGCCCG
 GAAGAAGGAGCGGGAGAAACGCAGCCAGGACCTGCAGAAGCTGATCACAGCGGCAGACCACTGCAGAG
 CAGCGGCGCACGGAACGCAAGGCCCCCAAAAAGAAAGCTACCCAGAAAAAGGAGGCTGAGAAGCCGGCTG
 TTCCTGAGACTGCAGGCATCAAGTTCCAGACTCAAGTCTGCAGGTGTCAAGCTGCGGAGCCAACGGAT
 GAAGCTGCCAAGCTCTGTGGGACAGAAGAAGATCAAGGCCCTGGAACAGATGCTGCTGGAGCTTGGTGTG
 GAGCTGAGCCCGACACCTACGGAGGAGCTGGTGCACATGTTCAATGAGCTGCGAAGCGACCTGGTGTGC
 TCTACGAGCTCAAGCAGGCCTGTGCCAACTGCGAGTATGAGCTGCAGATGCTGCGGCACCGTCAAGGC
 ACTGGCCCGGGCTGGTGTGCTAGGGGGCCCTGCCACACCAGCATCAGGCCAGGCCCGGCCCTCTGCTGAG
 CCGGCAGTGAACCCGGACTTGGTCTGACCCCAAGGACACCATCATTGATGTGGTGGGCGCACCCC
 TCACGCCCAATTCGAGAAAGCGACGGGAGTCGGCTCCAGCTCATCTTCCGTGAAGAAAGCCAAGAAGCC
 G

ACGCGTACGCGGCCGCTCGAG – GFP Tag – GTTTAA

Protein Sequence:

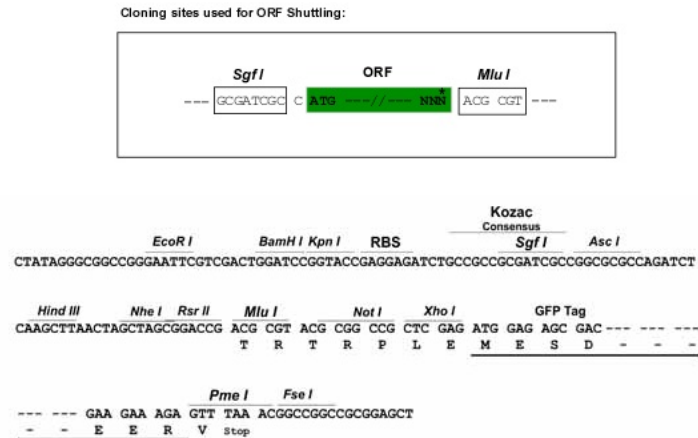
>RG222239 representing NM_019100
 Red=Cloning site Green=Tags(s)

MATGADVRDILELGGPEGDAASGTISKKDIINPDKKKSKKSSSETLTFKRPEGMHREVVYALLYSDKKDAPP
 LLPSDTGQGYRTVKAKLGSKKVRPWKMPFTNPARKDGAMFFHWRRAAEEGKDYPFARFNKTVPVYSE
 QEYQLYLHDDAWTKAETDHLFDLSRRFDLRFVVIHDDRYDQQFKKRSVEDLKERYYHICAKLANVRAVPG
 TDLKIPVFDAGHERRRKEQLERLYNRTPEQVAEEYLLQELRKIEARKKEREKRSQDLQKLITAADTTAE
 QRRTERKAPKKLPQKKEAEKPAVPEPAGIKFPDFKSAGVTLRSQRMKLPSSVQKQKIKALEQMELLELV
 ELSPPTPEELVHMFNELRSDLVLLYELKQACANCEYELQMLRHRHEALARAGVLGGPATPASGPGPASAE
 PAVTEPLGPDPKDTIIDVVGAPLTPNSRKRRESASSSSSVKAKKP

TRTRPLE – GFP Tag – V

Restriction Sites:

Sgfl-MluI

Cloning Scheme:


ACCN: NM_019100

ORF Size: 1401 bp

OTI Disclaimer: The molecular sequence of this clone aligns with the gene accession number as a point of reference only. However, individual transcript sequences of the same gene can differ through naturally occurring variations (e.g. polymorphisms), each with its own valid existence. This clone is substantially in agreement with the reference, but a complete review of all prevailing variants is recommended prior to use. [More info](#)

OTI Annotation: This clone was engineered to express the complete ORF with an expression tag. Expression varies depending on the nature of the gene.

Components: The ORF clone is ion-exchange column purified and shipped in a 2D barcoded Matrix tube containing 10ug of transfection-ready, dried plasmid DNA (reconstitute with 100 ul of water).

Reconstitution Method:

1. Centrifuge at 5,000xg for 5min.
2. Carefully open the tube and add 100ul of sterile water to dissolve the DNA.
3. Close the tube and incubate for 10 minutes at room temperature.
4. Briefly vortex the tube and then do a quick spin (less than 5000xg) to concentrate the liquid at the bottom.
5. Store the suspended plasmid at -20°C. The DNA is stable for at least one year from date of shipping when stored at -20°C.

RefSeq: [NM_019100.5](#)

RefSeq Size: 1739 bp

RefSeq ORF: 1404 bp

Locus ID: 55929

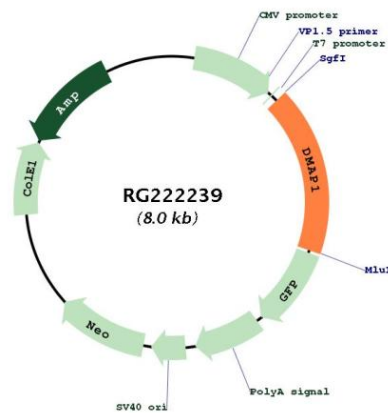
UniProt ID: [Q9NPF5](#)

Cytogenetics: 1p34.1

Protein Families: Transcription Factors

Gene Summary: This gene encodes a subunit of several, distinct complexes involved in the repression or activation of transcription. The encoded protein can independently repress transcription and is targeted to replication foci throughout S phase by interacting directly with the N-terminus of DNA methyltransferase 1. During late S phase, histone deacetylase 2 is added to this complex, providing a means to deacetylate histones in transcriptionally inactive heterochromatin following replication. The encoded protein is also a component of the nucleosome acetyltransferase of H4 complex and interacts with the transcriptional corepressor tumor susceptibility gene 101 and the pro-apoptotic death-associated protein 6, among others. Alternatively spliced transcript variants encoding the same protein have been described. [provided by RefSeq, Jul 2008]

Product images:



Circular map for RG222239