

## Product datasheet for **RG222235**

### THOC2 (NM\_001081550) Human Tagged ORF Clone

#### Product data:

Product Type:	Expression Plasmids
Product Name:	THOC2 (NM_001081550) Human Tagged ORF Clone
Tag:	TurboGFP
Symbol:	THOC2
Synonyms:	CXorf3; dj506G2.1; hTREX120; MRX12; MRX35; THO2
Mammalian Cell Selection:	Neomycin
Vector:	pCMV6-AC-GFP (PS100010)
E. coli Selection:	Ampicillin (100 ug/mL)
ORF Nucleotide Sequence:	>RG222235 representing NM_001081550 Red=Cloning site Blue=ORF Green=Tags(s)

TTTTGTAATACGACTCACTATAGGGCGGCCGGAATTCGTCGACTGGATCCGGTACCGAGGAGATCTGCC  
GCC**CGATCGCC**

ATGGCGCGCCGGCTGTGGTGGTCCCGCAGAGTGGATAAAGAAGTGGGAGAAATCAGGGAGAGGCGAAT  
TTTTGCATTTATGTCGGATCCTCAGTGAATAAAAGCCATGATAGTTCAACATACAGAGATTTCCAGCA  
AGCTCTCTATGAGTTGTCATATCATGTAATTAAGGAAATCTAAAGCATGAACAGGCATCTAATGTTCTT  
AGTGACATTAGTGAATTCGTGAGGATATGCCCTCCATTCTTGCTGATGTATTCTGCATATTAGACATTG  
AGACAAATTTAGTGAAGAAAAAGCAAGAGAGACTATTTTACACAGTTGGTATTAGCATGTTTGTATTT  
AGTTTCAGACACAGTTCTAAAGGAACGCCTGGATCCAGAAACACTGGAATCATTAGGGCTTATCAACAA  
TCACAGCAATTCATCAAAAGTCAGTTAAAATCAAGACAAAACCTTTTTATAAGCAGCAAAAATTCAT  
TGTTAAGAGAAGAGAATGAAGGTTATGCCAAGCTGATTGCTGAATTGGGGCAAGATTTATCTGGAAGTAT  
TACTAGTGATTTAATCTTAGAAAATATCAAATCTTTAATAGGATGCTTTAATCTGGATCCCAATAGAGTT  
TTGGATGTCATTTTAGAAGTGTGTAATGCAGGCCAGAACACGATGACTTCTTTATCTTTGTTAGAAT  
CTTACATGAGTATGTGTGAACCGCAAACACTGTGTCATATTCTGGGTTCAAATTCAGTTTTACCAGGA  
ACCAAAATGGCGAGACACCATCATCTTTATACAGAGTTGCAGCAGTACTTCTACAATTTAATCTTATTGAT  
TTAGATGATCTTTATGTACATCTTCCGGCTGATAATTGCATTATGGATGAACACAAACGAGAAATTTG  
CGAAGCTAAGCAAATTTAGAAAAGCTTACGATGGTTGTGTTGTTCTTCTGAAAAAATGGATGAGCGAGA  
GAAAGAAAAGGAAAAAGAGAGGAGAAAGTAGAGAAACCACTGATAACCAAAAACCTTGGCTTGTGGAA  
GCCTTATTAAGATTGGTATTGGCAACATGCACAGAACATTATGGATCAGATGCCTCCATACTATGCAG  
CTTCACACAAGCTAATAGCCCTTGCTATTTGCAAGCTCATTATATAACTATTGAGCCTCTTACCAGAA  
AGTTGGAGTTCTAAAGTGCTAAAGGCTCACCTGTTAATGCTTTGCAAAAACAAGAGAGCACCAAAAACA  
GCTGAGAGCTTTGAAGATTTGAGGAGAGACGTGTTCAATATGTTCTGTTACCTTGGTCTCACCTTTCTC  
ACGATCCCATTTATTTGCAAAAGTGGTGGCATAGGCAAGTCATTTATGAAGGAGTTTCAGTCTGATGG  
AAGCAAAACAAGAGATAAAGAAAAACGGAAGTTATCCTTAGCTGTTTGCTTAGCATTACTGACCAGGTA



[View online »](#)

CTACTTCCATCTCTTTCTTTGATGGACTGCAATGCTTGTATGTCTGAGGAACATGGGGAATGTTTAAAA  
CATTTCCATATCAGCATAGATATCGTCTGTATGGCCAGTGAAGAATGAACTTATAACAGTCACCCACT  
TTTAGTAAAAGTTAAAGCTCAAACAATAGACAGAGCCAAATATATCATGAAGCGCCTAACCAAGGAAAA  
GTGAAGCCTTCTGGAAGACAAAATGGGAAGTTGAGCCACAGCAATCCAACCATTTTGTGATTATATCT  
TGTCACAAATACAGAAGTATGATAACTTAATAACACCTGTAGTAGATTCAATTGAAATACCTCACTTCACT  
GAATTATGATGTCTTGGCCTATTGTATCATTGAAGCTTTAGCTAATCCAGAAAAGGAAAGAATGAAACAT  
GATGACACAACCATCTCAAGCTGGCTTCAGAGTCTGGCTAGTTTCTGTGGTGCAGTTTTTCGTAATATC  
CAATTGATCTTGGCTTCTTTCAGTATGTTGCCAATCAGCTAAAGCGGGCAAAAAGTTTTGACCTGCT  
TATATTGAAAGAAGTGGTACAAAAAATGGCAGGAATAGAAATTACAGAGGAAATGACAATGGAGCAACTA  
GAGGCTATGACTGGTGGAGAGCAGCTAAAAGCTGAGGGTGGTTATTTTGGTCCAGTACAGAAACACTAAAA  
AATCCTCTCAGAGATTAAAGGATGCTCTATTGGACCATGATCTTGCCTTCTCTCTGTCTGCTTATGGC  
TCAGCAGAGAAAATGGGGTAACTTTTCAGGAAGTGGAGAGAAACATTTGAAACTTGTGGGAAAGCTCTAT  
GACCAGTGTATGATACCTGGTGCAGTTTGGTGGTTTTAGCATCTAATCTGAGCACAGAAGATTATA  
TAAAGCGAGTGCCTTCAATTGATGTACTCTGTAATGAATTCATACACCCCATGATGCAGCATTTTTCT  
GTCTAGGCCAATGTATGCCCATCATATTCGTCAAAGTATGATGAACTTAAAAAATCAGAAAAGGGAAGT  
AAACAGCAACATAAAGTTCATAAGTACATTACATCATGTGAGATGGTGTGGCGCCTGTCCATGAAGCAG  
TGGTCTCCTTACATGTTTCCAAAGTCTGGGATGACATCAGCCCTCAATTCTATGCTACATTCTGGTCAAT  
GACAATGTATGACCTTGCAGTTCACACACCAGCTATGAACGAGAAGTCAATAAACTTAAAGTCCAGATG  
AAAGCAATTGATGACAATCAGGAAATGCCCCCAATAAAAAGAAAAAGAGAAGGAGCGCTGTACTGCC  
TTCAGGACAAGCTTCTTGAAGAAGAAAAGAAACAGATGGAACATGTACAGAGAGTTTACAGAGATTGAA  
ACTGGAAGGACAAGCTTCTTGAAGAAGAAAAGAAACAGATGGAACATGTACAGAGAGTTTACAGAGATTGAA  
TGTATATTTCTCGATGATTTTTTCAGCAATTGATGCTGTTTACTGTGCTCGTTTTGTTGAATTGGTAC  
ATCAACAGAAAACCTCAAATTTTTCCACACTTCTTTGCTATGATCGAGTTTTCTGACATAATTTACAC  
AGTTGCAAGCTGTACTGAAAATGAAGCCAGTACGATACGGAAGGTTTTCTTGTGCATGTTAGAGACTGTG  
ACCAGGTGGCATAGTATAGAGCCACATATGAAAAGGAATGTGGAACACTATCCAGGATTCCTTACCATAT  
TACGGGCAACTGGATTTGATGGTGGAAATAAGGCTGATCAATTAGACTATGAAAATTTTCGACATGTTGT  
ACATAAATGGCATTACAAACTAACCAAGGCATCGGTACATTGCCTTGAACAGGCGAATATACTCACATC  
AGGAATATCTTGATTGTGCTAACAAAAAATCTTCTTGGTACCCAAAAGTTTTGAATCTGGGTCAAGCTT  
TGGAAAGAAGAGTACACAAAATCTGCCAAGAAGAAAAGAGAAGAGGCCAGATCTATATGCATTGGCTAT  
GGGCTACTCTGGCAGTTGAAAAGTAGAAAGTCATACATGATACCTGAAAATGAGTTTCATCACAAAGAC  
CCCCCTCCGAGGAATGCAGTTGCCAGTGTGCAAAATGGGCTGGTGGTGGCCTTCTTCATCATCAATAG  
GAAGTGCATCTAAATCGGATGAAAGCAGTACTGAGGAGACTGATAAATCAAGGGAGAGATCTCAGTGTGG  
TGTGAAAGCTGTTAATAAAGCTTCTAGTACCACACCTAAAGGGAATTCAGCAATGGAAATAGTGGCTCT  
AACAGCAACAAAGCTGTTAAAGAAAATGACAAAAGAAAAGGGAAGAGAAGAAAAGAGAAAAAGAAA  
AGACTCCAGCTACTACTCCAGAGGCCAGGGTACTTGGTAAAGATGGTAAAGAAAACAAAGGAAGAGCG  
GCCAAATAAGATGAAAAGCAAGAGAGACCAAGGAAAGAACGCCGAAGTCTGACAAAGAGAAAAGAAAA  
TTCAAGAAGGAAGAAAAGCTAAAGATGAGAAATTTAAGACCACTGTCCCAACGCAGAATCAAAATCAA  
CTCAAGAAAGGGAAGAGAGAAGGAGCCATCCAGAGAAAGAGATATAGCAAAGGAAATGAAATCAAAGGA  
AAATGTTAAAGGAGGAGAAAAAACACCAAGTTTCTGGGTCCTTGAATCACCTGTTCCAGATCAGATATT  
CCAGAGCCTGAAAGGGAACAAAAACGCCGCAAAATTTGATCTCACCTTCTCCATCACATTCTCCACAG  
TAAAGGACAGTCTCATCGAACTCAAGGAATCTTACGAAAAGCTCTACATTAATCATACTCTCCACCACT  
GTCCAAGAGTAAGGAGAGAGAAAATGGACAAGAAAGATTTGGACAAGTCAAGGGAAGATCCAGAGAAAGA  
GAGAAAAAAGATGAAAAGGACAGGAAAGAGCGAAAAGGGATCACTCAAACAACGACCGTGAAGTCCAC  
CGGACTTAACCAAGAGACGTAAGAGGAGAAATGGAACAATGGGGTTTTCAAACATAAAAGTGAAGTCC  
TTGTGAATCTCCTTATCCAAATGAGAAAGACAAGGAAAAAATAAGTCAAATCTTCAGGCAAAGAAAA  
GGCAGTGATTCATTTAAATCTGAGAAGATGGATAAAATCTCCTCCGGTGGCAAAAAGGAGTCCAGGCATG  
ATAAAGAAAAGATAGAAAAGAAAGAAAACGGGACAGTTCAGGAGAAAGGAAGAGAAGAACATCATAA  
GTCTCGGACAAGCACAGA

ACGCGTACGCGGCCGCTCGAG - GFP Tag - GTTTAA

Protein Sequence: >RG222235 representing NM\_001081550  
 Red=Cloning site Green=Tags(s)

```

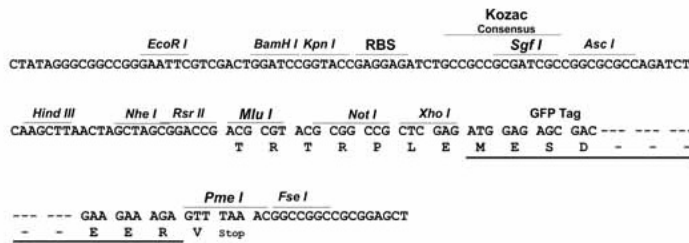
MAAAVVVPAEWIKNWEKSGRGEFLHLCRILSENKSHDSSTYRDFQQALYELSYHVIKGNLKHEQASNVL
SDISEFREDMPSILADVFCILDIEIETNCLLEEKSKRDYFTQLVLAACYLVS DTVLKERLDPETLESLGLIKQ
SQQFNQKSVKIKTKLFYKQKFNLLREENEGYAKLIAELGQDLSGSITSDILENIKSLIGCFNLDPNRV
LDVILEVFECPREHDDFFISLLESYMSMCEPQTLCHILGFKFKFYQEPNGETPSSLYRVAAVLLQFNLD
LDDL YVHLLPADNCIMDEHKREIAEAKQIVRKLTMVVL SSEKMDEREKEKEKEEKEVEKPPDNQKGLLE
ALLKIGDWQHAQNIMQMPYYAASHKLI ALAICKLIHITIEPL YRRVGVPGKAGKSPVNALQNKRAPKQ
AESFEDLRRDVFNMFCYLGPHLSHDPILFAKVVRIGKSFMKFEQSDGSKQEDKEKTEVILSCLLSITDQV
LLPSLSLMDCNACMSEELWGMFKTFPYQHRYRLYGQWKNETYNSHPLLKVYKAQTIDRAKYIMKRLTKEN
VKPSGRQIGKLSHSNPTILFDYILSQIQKYDNLITPVVDSLKYL TSLNYDVLAYCIEEALANPEKERMKH
DDTTISSWLQSLASFCGAVFRKYPIDLAGLLQYVANQLKAGKSFDLLILKEVVQKMGAGIEITEEMTMEQL
EAMTGGELKAEAGGYFGQIRNTKSSQRLKDALLDHDALPLCLLMAQQRNGVIFQEGGKHLKLVGKLY
DQCHDTLVQGGFLASNLSTEDYIKRVPSIDVLCNEFHTPHDAFFLSRPMYAHHIS SKYDELKSKSEKGS
KQKHVKHYITSCVMVAPVHEAVVSLHVSKVWDDISPQFYATFWSL TMYDLAVPHTSYEREVNLKVQM
KAIDDNQEMPPNKKKKEKERCTALQDKLLEEKQMEHVQRVLQRLKLEKDNWLLAKSTKNETITKFLQL
CIFPRCIFSAIDAVYCARFVELVHQKTPNFSTLLCYDRVFSDI IYTVASCTENEASRYGRFLCCMLETV
TRWHSDRATYEKECGNYPGFLTILRATGFDGGNKADQLD YENFRHVHVKWHYKLTASVHCLLETGEYTHI
RNILIVLTKILPWPVKVNLNLGQALERVHKICQEEKEKRPDLYALAMGYSGQLKSRKSYMIPENEFHKKD
PPRNAVASVQNGPGGGPSSSSIGSASKSDESSTEETDKSRERSQCGVKAVNKASSTTPKGNSSNGNSGS
NSNKAVKENDKEKGEKEKEKEKEKTPATTPPEARVLGKDGKEKPKKEERPKNKDEKARETKERTPKSDKEKEK
FKKEEKAKDEKFKTTVPNAESKSTQEREREKPSRERDIAKEMKSKENVKGGKEKTPVSGSLKSPVPRSDI
PEPEREQRRKIDTHPSPSHSSTVKDSLIELKESSAKLYINHPTPPPLSKSKEREMDKDLDKSRERSRER
EKKDEKDRKERKRDHSNNDREVPPDLTKRRKEENGTMGVSKHKSESPCESYPNEKDKENKSKSSGKEK
GSDSFKSEKMDKISSGGKESRHDKEKIEKKEKRDSSGGKEEKHHKSSDKHR
    
```

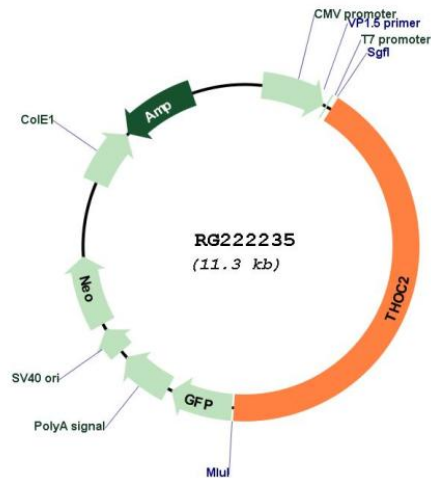
TRTRPLE - GFP Tag - V

Restriction Sites: SgfI-MluI

Cloning Scheme:

Cloning sites used for ORF Shuttling:



**Plasmid Map:**


**ACCN:** NM\_001081550

**ORF Size:** 4779 bp

**OTI Disclaimer:** Due to the inherent nature of this plasmid, standard methods to replicate additional amounts of DNA in *E. coli* are highly likely to result in mutations and/or rearrangements. Therefore, OriGene does not guarantee the capability to replicate this plasmid DNA. Additional amounts of DNA can be purchased from OriGene with batch-specific, full-sequence verification at a reduced cost. Please contact our customer care team at [custsupport@origene.com](mailto:custsupport@origene.com) or by calling 301.340.3188 option 3 for pricing and delivery.

The molecular sequence of this clone aligns with the gene accession number as a point of reference only. However, individual transcript sequences of the same gene can differ through naturally occurring variations (e.g. polymorphisms), each with its own valid existence. This clone is substantially in agreement with the reference, but a complete review of all prevailing variants is recommended prior to use. [More info](#)

**OTI Annotation:** This clone was engineered to express the complete ORF with an expression tag. Expression varies depending on the nature of the gene.

**Components:** The ORF clone is ion-exchange column purified and shipped in a 2D barcoded Matrix tube containing 10ug of transfection-ready, dried plasmid DNA (reconstitute with 100 ul of water).

**Reconstitution Method:**

1. Centrifuge at 5,000xg for 5min.
2. Carefully open the tube and add 100ul of sterile water to dissolve the DNA.
3. Close the tube and incubate for 10 minutes at room temperature.
4. Briefly vortex the tube and then do a quick spin (less than 5000xg) to concentrate the liquid at the bottom.
5. Store the suspended plasmid at -20°C. The DNA is stable for at least one year from date of shipping when stored at -20°C.

**RefSeq:** [NM\\_001081550.2](#)

**RefSeq Size:** 5625 bp

**RefSeq ORF:** 4782 bp

**Locus ID:** 57187

**UniProt ID:** [Q8NI27](#)

**Cytogenetics:** Xq25

**Protein Pathways:** Spliceosome

**Gene Summary:** The TREX multiprotein complex binds specifically to spliced mRNAs to facilitate mRNA export. The protein encoded by this gene is a member of the THO complex, a subset of the TREX complex. The encoded protein interacts with the THOC1 protein.[provided by RefSeq, Jun 2010]