

Product datasheet for **RG222224**

REEP5 (NM_005669) Human Tagged ORF Clone

Product data:

Product Type: Expression Plasmids
Product Name: REEP5 (NM_005669) Human Tagged ORF Clone
Tag: TurboGFP
Symbol: REEP5
Synonyms: C5orf18; D5S346; DP1; POB16; TB2; Yip2e; YOP1
Mammalian Cell Selection: Neomycin
Vector: pCMV6-AC-GFP (PS100010)
E. coli Selection: Ampicillin (100 ug/mL)
ORF Nucleotide Sequence: >RG222224 representing NM_005669
Red=Cloning site Blue=ORF Green=Tags(s)

TTTTGTAATACGACTCACTATAGGGCGGCCGGAATTCGTCGACTGGATCCGGTACCGAGGAGATCTGCC
GCC**CGATCGCC**

ATGTCTGCGGCCATGAGGGAGAGGTTTCGACCGGTTCTGCACGAGAAGAACTGCATGACTGACCTTCTGG
CCAAGCTCGAGGCCAAAACCGCGTGAACAGGAGCTTCATCGCTTTGGTGTATCGGACTGGTGGCCTT
GTACCTGGTGTTCGGTTATGGAGCCTCTCTCTGCAACCTGATAGGATTTGGTACCCAGCCTACATC
TCAATTAAGCTATAGAGAGTCCAACAAGAAGATGATACCCAGTGGCTGACCTACTGGTAGTGTATG
GTGTGTTGAGCATTGCTGAATTCTCTCTGATATCTTCTGTCATGGTCCCTTCTACTACATGCTGAA
GTGTGGCTTCTGTTGTGGTGCATGGCCCCGAGCCCTTCTAATGGGGCTGAAGTCTCTACAAGCGCATC
ATCCGTCCTTTCTTCTGAAGCAGAGTCCCAGATGGACAGTGTGGTCAAGGACCTTAAAGACAAGGCCA
AAGAGACTGCAGATGCCATCACTAAAGAAGCGAAGAAAGCTACCGTGAATTTACTGGGTGAAGAAAAGAA
GAGCACC

AG**CGGACCG**ACGCGTACGCGCCGCTCGAG - GFP Tag - GTTTAA

Protein Sequence: >RG222224 representing NM_005669
Red=Cloning site Green=Tags(s)

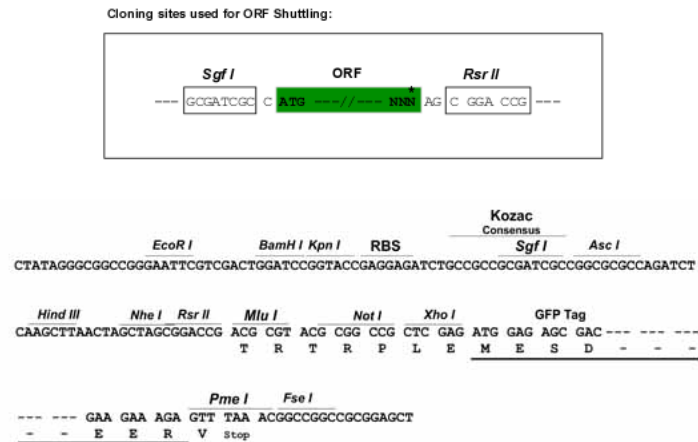
MSAAMRERFDRFLHEKNCMTDLLAKLEAKTGVNRSFIALGVI GLVALYL VFGYGASLLCNLIGFGYPAYI
SIKAIESP NKEDDTQWLTYWVYGVFSIAEFFSDIFLSWFPFYMLKCGFLLWCMAPSPSNGAELLYKRI
IRPFFLKHESQMSVVKDLKDKAKETADAITKEAKKATVNLLGEEKST

SGP**TRRRLE** - GFP Tag - V

Restriction Sites: Sgfl-RsrII



[View online »](#)

Cloning Scheme:


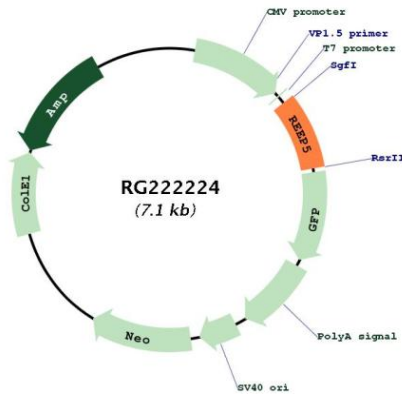
- ACCN:** NM_005669
- ORF Size:** 567 bp
- OTI Disclaimer:** The molecular sequence of this clone aligns with the gene accession number as a point of reference only. However, individual transcript sequences of the same gene can differ through naturally occurring variations (e.g. polymorphisms), each with its own valid existence. This clone is substantially in agreement with the reference, but a complete review of all prevailing variants is recommended prior to use. [More info](#)
- OTI Annotation:** This clone was engineered to express the complete ORF with an expression tag. Expression varies depending on the nature of the gene.
- Components:** The ORF clone is ion-exchange column purified and shipped in a 2D barcoded Matrix tube containing 10ug of transfection-ready, dried plasmid DNA (reconstitute with 100 ul of water).
- Reconstitution Method:**
1. Centrifuge at 5,000xg for 5min.
 2. Carefully open the tube and add 100ul of sterile water to dissolve the DNA.
 3. Close the tube and incubate for 10 minutes at room temperature.
 4. Briefly vortex the tube and then do a quick spin (less than 5000xg) to concentrate the liquid at the bottom.
 5. Store the suspended plasmid at -20°C. The DNA is stable for at least one year from date of shipping when stored at -20°C.
- RefSeq:** [NM_005669.5](#)
- RefSeq Size:** 3116 bp
- RefSeq ORF:** 570 bp
- Locus ID:** 7905
- UniProt ID:** [Q00765](#)
- Cytogenetics:** 5q22.2

Domains: TB2_DP1_HVA22

Protein Families: Druggable Genome, Transmembrane

Gene Summary: May promote functional cell surface expression of olfactory receptors.[UniProtKB/Swiss-Prot Function]

Product images:



Circular map for RG222224