

## Product datasheet for **RG222165**

### **S100 Calcium Binding Protein A13 (S100A13) (NM\_005979) Human Tagged ORF Clone**

#### Product data:

**Product Type:** Expression Plasmids  
**Product Name:** S100 Calcium Binding Protein A13 (S100A13) (NM\_005979) Human Tagged ORF Clone  
**Tag:** TurboGFP  
**Symbol:** S100 Calcium Binding Protein A13  
**Mammalian Cell Selection:** Neomycin  
**Vector:** pCMV6-AC-GFP (PS100010)  
**E. coli Selection:** Ampicillin (100 ug/mL)  
**ORF Nucleotide Sequence:** >RG222165 representing NM\_005979  
Red=Cloning site Blue=ORF Green=Tags(s)

TTTTGTAATACGACTCACTATAGGGCGGCCGGAATTCGTCGACTGGATCCGGTACCGAGGAGATCTGCC  
GCC**CGATCGCC**

ATGGCAGCAGAACCCTGACAGAGCTAGAGGAGTCCATTGAGACCGTGGTCACCACCTTCTTCACCTTTG  
CAAGGCAGGAGGGCCGGAAGGATAGCCTCAGCGTCAACGAGTTCAAAGAGCTGGTTACCCAGCAGTTGCC  
CCATCTGCTCAAGGATGTGGGCTCTCTTGATGAGAAGATGAAGAGCTGGATGTGAATCAGGACTCGGAG  
CTCAAGTTCAATGAGTACTGGAGATTGATTGGGGAGCTGGCCAAGGAAATCAGGAAGAAGAAAGACCTGA  
AGATCAGGAAGAAG

**ACGCGT**ACGCGGCCGCTCGAG - GFP Tag - GTTTAA

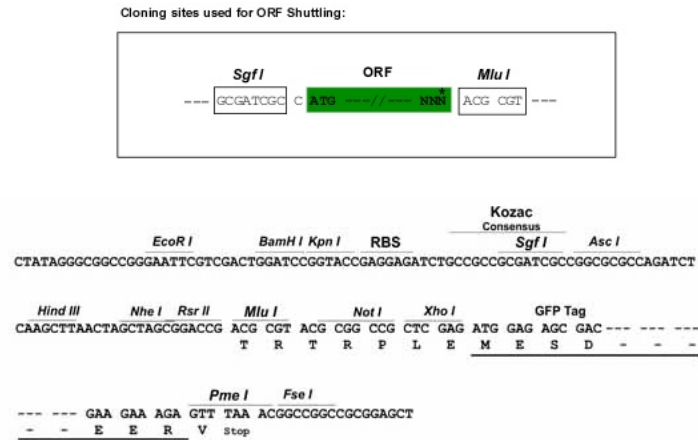
**Protein Sequence:** >RG222165 representing NM\_005979  
Red=Cloning site Green=Tags(s)  
MAAEPLTELEESIETVVTFFTFARQEGRKDSLVSNEFKELVTQQLPHLLKDVGSLDEKMKSLDVNQDSE  
LKFNEYWRLIGELAKEIRKKDLKIRKK

**TRTRPLE** - GFP Tag - V

**Restriction Sites:** Sgfl-MluI



[View online »](#)

**Cloning Scheme:**


ACCN: NM\_005979

ORF Size: 294 bp

OTI Disclaimer: The molecular sequence of this clone aligns with the gene accession number as a point of reference only. However, individual transcript sequences of the same gene can differ through naturally occurring variations (e.g. polymorphisms), each with its own valid existence. This clone is substantially in agreement with the reference, but a complete review of all prevailing variants is recommended prior to use. [More info](#)

OTI Annotation: This clone was engineered to express the complete ORF with an expression tag. Expression varies depending on the nature of the gene.

Components: The ORF clone is ion-exchange column purified and shipped in a 2D barcoded Matrix tube containing 10ug of transfection-ready, dried plasmid DNA (reconstitute with 100 ul of water).

Reconstitution Method:

1. Centrifuge at 5,000xg for 5min.
2. Carefully open the tube and add 100ul of sterile water to dissolve the DNA.
3. Close the tube and incubate for 10 minutes at room temperature.
4. Briefly vortex the tube and then do a quick spin (less than 5000xg) to concentrate the liquid at the bottom.
5. Store the suspended plasmid at -20°C. The DNA is stable for at least one year from date of shipping when stored at -20°C.

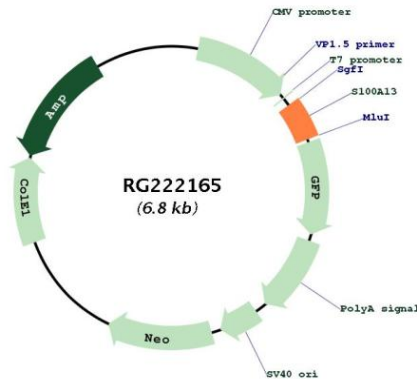
RefSeq: [NM\\_005979.2](#), [NP\\_005970.1](#)

RefSeq Size: 743 bp

RefSeq ORF: 297 bp  
 Locus ID: 6284  
 UniProt ID: [Q99584](#)  
 Cytogenetics: 1q21.3  
 Domains: S\_100  
 Protein Families: Druggable Genome  
 Gene Summary:

The protein encoded by this gene is a member of the S100 family of proteins containing 2 EF-hand calcium-binding motifs. S100 proteins are localized in the cytoplasm and/or nucleus of a wide range of cells, and involved in the regulation of a number of cellular processes such as cell cycle progression and differentiation. S100 genes include at least 13 members which are located as a cluster on chromosome 1q21. This protein is widely expressed in various types of tissues with a high expression level in thyroid gland. In smooth muscle cells, this protein co-expresses with other family members in the nucleus and in stress fibers, suggesting diverse functions in signal transduction. Multiple alternatively spliced transcript variants encoding the same protein have been found for this gene. [provided by RefSeq, Jul 2008]

### Product images:



Circular map for RG222165