

Product datasheet for **RG222149**

IL18BP (NM_001039660) Human Tagged ORF Clone

Product data:

Product Type: Expression Plasmids
Product Name: IL18BP (NM_001039660) Human Tagged ORF Clone
Tag: TurboGFP
Symbol: IL18BP
Synonyms: FVH; IL18BPa
Mammalian Cell Selection: Neomycin
Vector: pCMV6-AC-GFP (PS100010)
E. coli Selection: Ampicillin (100 ug/mL)
ORF Nucleotide Sequence: >RG222149 representing NM_001039660
Red=Cloning site Blue=ORF Green=Tags(s)

TTTTGTAATACGACTCACTATAGGGCGGCCGGAATTCGTCGACTGGATCCGGTACCGAGGAGATCTGCC
GCC**CGATCGCC**

ATGACCATGAGACACAACCTGGACACCAGACCTCAGCCCTTTGTGGGTCTGCTCCTGTGTGCCACGTCTG
TCACTCTCTGGTCAGAGCCACACCTGTCTCGCAGACCACCACAGCTGCCACTGCCTCAGTTAGAAGCAC
AAAGGACCCCTGCCCTCCAGCCCCAGTGTCCAGCAGCTAAGCAGTGTCCAGCATTGGAAGTGACC
TGGCCAGAGGTGGAAGTGCCACTGAATGGAACGCTGAGCTTATCCTGTGTGGCCTGCAGCCGCTTCCCCA
ACTTCAGCATCCTCTACTGGCTGGCAATGGTTCCTTCATTGAGCACCTCCAGGCCGACTGTGGGAGGG
GAGCACCAGCCGGAACGTGGGAGCACAGGTACGACGCTGTGCAAGGCCTTGGTGTGGAGCAGCTGACC
CCTGCCCTGCACAGCACCAACTTCTCCTGTGTGCTCGTGGACCCTGAACAGGTTGTCCAGCGTCACGTCTG
TCTGGCCAGCTCTGGCTGGCTGAGGGCAACCTTGCCCCCACCAAGAAGCCCTGCCTCCAGCCA
CAGCAGTCCACAGCAGCAGGGT

ACGCGTACGCGGCCGCTCGAG - GFP Tag - GTTTAA

Protein Sequence: >RG222149 representing NM_001039660
Red=Cloning site Green=Tags(s)

MTMRHNWTPDLSPLWVLLCAHVVTLLVRATPVSTTTAATASVRSTKDPSPQPPVFAAKQCPALEVT
WPEVEVPLNGTSLSCVACSRFPNFSILYWLGNFSFIEHLPGRLEWEGSTSRERGSTGTQLCKALVLEQLT
PALHSTNFSVLDPEQVVQRHVLAQLWAGLRATLPPTQEALPSSHSPQQQG

TRTRPLE - GFP Tag - V

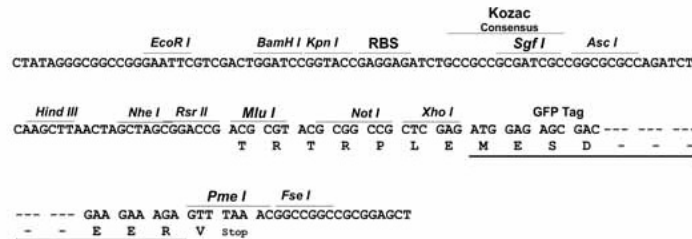
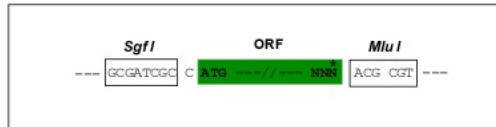
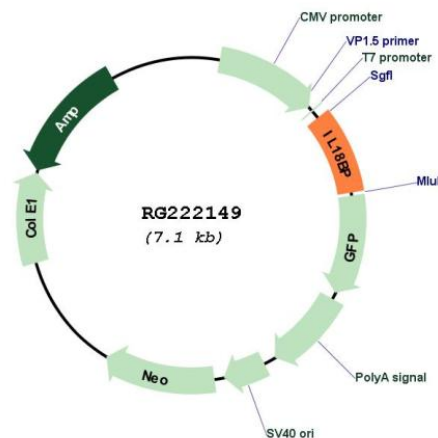
Restriction Sites: Sgfl-MluI



[View online »](#)

Cloning Scheme:

Cloning sites used for ORF Shutting:


Plasmid Map:

ACCN: NM_001039660

ORF Size: 582 bp

OTI Disclaimer: The molecular sequence of this clone aligns with the gene accession number as a point of reference only. However, individual transcript sequences of the same gene can differ through naturally occurring variations (e.g. polymorphisms), each with its own valid existence. This clone is substantially in agreement with the reference, but a complete review of all prevailing variants is recommended prior to use. [More info](#)
OTI Annotation: This clone was engineered to express the complete ORF with an expression tag. Expression varies depending on the nature of the gene.

Components: The ORF clone is ion-exchange column purified and shipped in a 2D barcoded Matrix tube containing 10ug of transfection-ready, dried plasmid DNA (reconstitute with 100 ul of water).

Reconstitution Method:

1. Centrifuge at 5,000xg for 5min.
2. Carefully open the tube and add 100ul of sterile water to dissolve the DNA.
3. Close the tube and incubate for 10 minutes at room temperature.
4. Briefly vortex the tube and then do a quick spin (less than 5000xg) to concentrate the liquid at the bottom.
5. Store the suspended plasmid at -20°C. The DNA is stable for at least one year from date of shipping when stored at -20°C.

RefSeq: [NM_001039660.2](#)

RefSeq Size: 1433 bp

RefSeq ORF: 585 bp

Locus ID: 10068

UniProt ID: [O95998](#)

Cytogenetics: 11q13.4

Protein Families: Druggable Genome, Secreted Protein

Gene Summary: The protein encoded by this gene functions as an inhibitor of the proinflammatory cytokine, IL18. It binds IL18, prevents the binding of IL18 to its receptor, and thus inhibits IL18-induced IFN-gamma production, resulting in reduced T-helper type 1 immune responses. This protein is constitutively expressed and secreted in mononuclear cells. Elevated level of this protein is detected in the intestinal tissues of patients with Crohn's disease. Alternatively spliced transcript variants encoding different isoforms have been described for this gene. [provided by RefSeq, Feb 2011]