

Product datasheet for **RG222118**

MED1 (NM_004774) Human Tagged ORF Clone

Product data:

Product Type:	Expression Plasmids
Product Name:	MED1 (NM_004774) Human Tagged ORF Clone
Tag:	TurboGFP
Symbol:	MED1
Synonyms:	CRSP1; CRSP200; DRIP205; DRIP230; PBP; PPARBP; PPARGBP; RB18A; TRAP220; TRIP2
Mammalian Cell Selection:	Neomycin
Vector:	pCMV6-AC-GFP (PS100010)
E. coli Selection:	Ampicillin (100 ug/mL)
ORF Nucleotide Sequence:	>RG222118 representing NM_004774 Red=Cloning site Blue=ORF Green=Tags(s)

TTTTGTAATACGACTCACTATAGGGCGCCGGGAATTCGTCGACTGGATCCGGTACCGAGGAGATCTGCC
GCC**CGATCGCC**

ATGAAAGCTCAGGGGAAACCGAGGAGTCAGAAAAGCTGAGTAAGATGAGTTCTCTCCTGGAACGGCTCC
ATGCAAAATTTAACCAAAATAGACCCTGGAGTGAAACCATTAAGCTTGTGCGTCAAGTCATGGAGAAGAG
GGTTGTGATGAGTTCTGGAGGCATCAACATTTGGTCAGCTGTTGGAGACATTGCAGAAGGCTCTCAA
GTAACATCTTTACCAGCAATGACTGATCGTTGGAGTCCATAGCAAGACAGAATGGACTGGGCTCTCATC
TCAGTGCCAGTGGCACTGAATGTTACATCACGTCAGATATGTTCTATGTGGAAGTGCAGTTAGATCCTGC
AGGACAGCTTTGTGATGTAAAAGTGGCTACCATGGGGAGAATCCTGTGAGCTGTCCGGAGCTTGTACAG
CAGCTAAGGGAAAAAATTTTGATGAATTTCTAAGCACCTTAAGGGCCTTGTTAATCTGTATAACCTTC
CAGGGGACAACAACTGAAGACTAAAATGTACTTGGCTCTCCAATCCTTAGAACAAGATCTTTCTAAAAAT
GGCAATTATGACTGAAAGCAACTAATGCTGGTCCCTTGGAAGATTCTCATGGAAGTGTGGCTAT
CTCACCAAGGAGTGGGGTCAATTAATGAACCTGAAGTACTATGCTCTCCTTCTGACCTACTGGATG
ACAAGACTGCATCTCCATCATTTTGCATGAGAATAATGTTTCTCGATCTTTGGGCATGAATGCATCAGT
GACAATGAAGGAACATCTGCTGTGTACAACTCCCAATTGCACCATAATTATGGGGTCACATCCAGTT
GACAATAATGGACCCCTCTCTCTCAATCACCAGTGCCAACAGTGTGATCTCTCGCTGTTTCT
TCTTGAATTTCCCGAGCAATCCAGTATCTAGAGCATTGTTTCAGAACTGCAGAAGTGCACAGGAAT
TCCATTGTTTGAACCAACCACTTATGCACCCCTGTATGAACTGATCACTCAGTTTGAGCTATCAAAG
GACCCGACCCCATACCTTTGAATCACAACATGAGATTTTATGCTGCTCTTCTGGTGCAGCAGCTGCT
ATTTCTCAACAAGGATGCTCCTCTCCAGATGGCCGAAGTCTACAGGGAACCCTTGTTAGCAAAATCAC
CTTTGAGCACCCTGGCCGAGTTCCTCTTATCCTAAATCTGATCAGACACCAAGTGGCCTATAACACCCTC
ATTGGAAGCTGTGCAAAAGAATCTTCTGAAAGAAGATTCTCCTGGGCTTCTCAATTTGAAGTGTGTC
CTCTCAGAGTCTCGTTTCAGCGTATCTTTTCAGCACCTGTGAATGACTCCCTGGTGTGTGGTAAT
GGATGTGCAGGACTCAACACATGTGAGCTGAAACTCTACAAAGGCTGTCCGATGCACTGATCTGCACA



[View online >](#)

GATGACTTCATTGCCAAAGTTGTTCAAAGATGTATGTCCATCCCTGTGACGATGAGGGCTATTCGGAGGA
AAGCTGAAACCATTCAAGCCGACACCCAGCACTGTCCCTCATTGCAGAGACAGTTGAAGACATGGTGAA
AAAGAACCTGCCCGGCTAGCAGCCAGGGTATGGCATGACCACAGGCAACAACCCAATGAGTGGTACC
ACTACCAACCAACACCTTTCCGGGGGTCCCATTACCACCTTGTTAATATGAGCATGAGCATCAAAG
ATCGGCATGAGTCGGTGGGCCATGGGGAGGACTTCAGCAAGGTGTCTCAGAACCAATCTTACCAGTTT
GTTGCAAATCACAGGGAACGGGGGTCTACCATTGGCTCGAGTCGACCCCTCTCATCACACGGCCCA
CCAGGATTTCTCAACCCTTTATGGAAGCAGCCCTTTAGAAAGGCAGAACTCCTCTCCGGCTCACCCCG
CATGGAATATGCTCGGGGAGCAACAAGACCAAGAAAAAGAGTCAAGATTACCACCTGAGAAACCA
AAGCACCAGACTGAAGATGACTTTCAGAGGGAGCTATTTTCAATGGATGTTGACTCACAGAACCTATCT
TTGATGTCAACATGACAGCTGACACGCTGGATACGCCACACATCACTCCAGCTCCAAGCCAGTGTAGCAC
TCCCCAACAACTTACCACAACCAGTACCTCACCCCAACCCAGTATTCAAAGGATGGTCCGACTATCC
AGTTCAGACAGCATTGGCCAGATGTAAGTACATCCTTTCAGACATTGCAGAAGAAGCTTCTAACTTC
CCAGCACTAGTGATGATTGCCAGCCATTGGCACCCCTCTCGAGATTCTCAAGCTCTGGGCATTTCTCA
GAGTACCCTGTTGACTCTGATGCTTTCAAATAACAATAATGAAAATCCATACACTGATCCAGCTGAT
CTTATTGCAGATGCTGCTGGAAGCCCAGTAGTACTCTCCTACCAATCATTTTTTTCATGATGGAGTAG
ATTTCAATCCTGATTTATTGAACAGCCAGAGCCAAAGTGGTTTTGGAGAAGAATATTTTGTGAAAGCAG
CCAAAGTGGGGATAATGATGATTTCAAAGGATTTGCATCTCAGGCACTAAATACTTTGGGGTGCCAATG
CTTGGAGGTGATAATGGGGAGACCAAGTTAAGGGCAATAACCAAGCCGACACAGTTGATTTCAAGTATTA
TTTCAGTAGCCGCAAGCTTTAGCTCCTGCAGATCTTATGGAGCATCACAGTGGTAGTCAGGGTCTTT
ACTGACCACTGGGACTTAGGGAAAGAAAAGACTCAAAGAGGGTAAAGGAAGGCAATGGCACCAGTAAT
AGTACTCTCGGGCCCGGATTAGACAGCAAACCAGGGAAGCGCAGTCGGACCCCTTCTAATGATGGGA
AAAGCAAAGATAAGCCTCAAAGCGGAAGGACAGACTGAGGAAAGTCTCCATCTCATAGTTCTTTC
TAACAGACCTTTTACCCACCTACCAGTACAGGTGGATCTAAATCGCCAGGCAGTGCAGGAAGATCTCAG
ACTCCCCAGGTGTTGCCACACCACCCATTCCCAAAATCACTATTCAGATTCTAAGGGAACAGTATGG
TGGGAAGCCTTCTCTCACAGTCAAGTATACCAGCAGTGGTCTGTGTCTTCTCAGGCAGCAAAAGCCA
CCATAGCCATTCTCCTCCTCTCTCATCTGCTTCCACCTCAGGGAAGATGAAAAGCAGTAAATCAGAA
GGTTCATCAAGTCCAAGTTAAGTAGCAGTATGTATTCTAGCCAGGGTCTTCTGGATCTAGCCAGTCCA
AAAATTCATCCCAGTCTGGGGGAAGCCAGGCTCCTCTCCATAACCAAGCATGGACTGAGCAGTGGCTC
TAGCAGCACCAAGATGAAACCTCAAGGAAAGCCATCATCACTTATGAATCCTTCTTAAGTAAACCAAC
ATATCCCCTTCTCATTCAAGCCACCTGGAGGCTCTGACAAGCTTGCCTCTCAATGAAGCCTGTTCTCTG
GAACTCCTCCATCCTCTAAAGCCAAGTCCCTATCAGTTCAGGTTCTGGTGGTCTCATATGTCTGGAAC
TAGTTCAAGCTCTGGCATGAAGTCATCTTCAGGGTTAGGATCCTCAGGCTCGTTGTCCCAGAAAACCTCC
CCATCATCTAATCCTGTACGGCATCTTCTCCTCCTTTTCTCAAGTGGCTCTTCCATGTCATCCTCTC
AGAACCAGCATGGGAGTTCTAAAGGAAAATCTCCAGCAGAAACAAGAAGCCGCTCTTGACAGCTGTCAT
AGATAAAGTGAAGCATGGGGTGTACCAGTGGCCCTGGGGTGAAGACCCTGGACGGCCAGATGGGG
GTGAGCACAAATCTTCCAGCCATCCTATGTCTCCAAACATAACATGTCAGGAGGAGAGTTTCAGGGCA
AGCGTGAGAAAAGTGATAAAGACAAATCAAAGTTTCCACCTCCGGGAGTTCAGTGGATTCTTCTAAGAA
GACCTCAGAGTCAAAAAATGTGGGGAGCACAGGTGTGGCAAAAAATATCATCAGTAAGCATGATGGAGGC
TCCCCTAGCATTAAAGCCAAGTGACTTTGCAGAAACCTGGGGAAGTGTGGAGAAGGGCTTAGGCCCTC
AAATGGCTTCTTCTAAAAACTATGGCTCTCCACTCATCAGTGGTTCCTACTCCAAAGCATGAGCGTGGCTC
TCCCAGCCATAGTAAGTACCAGCATATACCCCCAGAATCTGGACAGTAAAAGTGAAGTCAAGGCTCCTCC
ATAGCAGAGAAAATCTTATCAGAAATAGTCCAGCTCAGACGATGGTATCCGACCCTTCCAGAATACAGCA
CAGAGAAAACATAAGAAGCACAAAAGGAAAAGAAAGTAAAAGACAAAGATAGGGACCGAGACCCGGGA
CAAAGACCGAGACAAGAAAAATCTCATAGCATCAAGCCAGAGAGTTGGTCCAAATCACCCATCTCTTCA
GACCAGTCTTGTCTATGACAAGTAACACAATCTTATCTGCAGACAGACCCTCAAGGCTCAGCCAGACT
TTATGATTGGGGAGGAAGATGATGATCTTATGGATGTGGCCCTGATTGGGAAT

ACGCGTACGCGGCCGCTCGAG – GFP Tag – GTTTAA

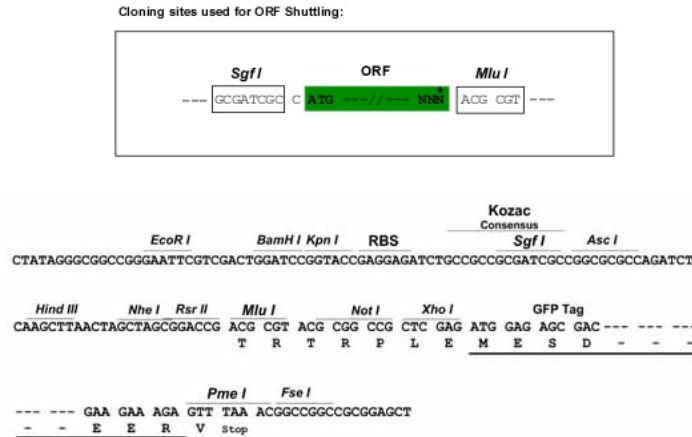
Protein Sequence: >RG222118 representing NM_004774
 Red=Cloning site Green=Tags(s)

```
MKAQGETEESEKLSKMSSLLERLHAKFNQNRPWSETIKLVRQVMEKRVVMSSGGHQHLVSCLETLQKALK
VTSLPAMTDRLESIARQNLGSHLSASGTECYITSDMFYVEVQLDPAGQLCDVKVAHHGENPVSCPELVQ
QLREKNFDEFKHLKGLVNLNLPDGNLKTMYLALQSLEQDLKMAIMYWKATNAGPLDKILHGSVGY
LTPRSGGHLMLNKYYVSPDLLDDKTASPIILHENNVSRSLGMNASVTIEGTSAVYKLIAPLIMGSHPV
DNKWTPSFSSITSANSVDLPACFFLKFPQPIPVSRAFVQKLQNCGTGIPLFETQPTYAPLYELITQFELSK
DPDPIPLNHNMRFYAALPGQHCYFLNKDAPLPDGRSLQGTLVSKITFQHPGRVPLILNLIRHQVAYNTL
IGSCVKRTILKEDSPGLLQFEVCPLSESRFSVSFQHPVNDLVCVVMVDVQDSTHVSKLYKGLSDALICT
DDFIKVVQRCMSIPVTMRAIRRAETIQADTPALSLIAETVEDMVKKNLPPASSPGYGMTTGNPMMSGT
TTPTNTFPGGPITTLFNMSMSIKDRHESVGHGEDFSKVSQNPILTSLQLITGNGGSTIGSSPTPPHHTPP
PVSSMAGNTKNHPMLMNLKDNPAQDFSTLYGSSPLERQNSSSGSPRMEICSGSNKTKKKSSRLPPEKP
KHQTEDDFQRELFSDVDVSNPFDVNMATDLDTPHITPAPSQCSTPPTTYPQPVPHQPQSIQRMVRLS
SSDSIGPDVTDILSDIAEEASKLPSTSDDCPAIGTPLRDSSSSGHSQSTLFDSDVFQTNNNENPYTDPAD
LIADAAGSPSSDPTNHFFHDGVDNFNPDLLNSQSQSGFGEEYFDESSQSGDNDDFKGFASQALNTLGVPM
LGGDNGETKFKGNQADTVDFSII SVAGKALAPADLMEHHSQSGLLTTGDLGKEKTQKRKVEGNGTSN
STLSGPGLDSPKGRSRTPSNDGKSKDKPPKRKKADTEGKSPSHSSSNRPFPTPTSTGGSKSPGSAGRSQ
TPPGVATPPPIKTIQIPKGTVMVGKPSHSSQYTSVSSVSSGSKSHSHSSSSSSASTSGKMKSSKSE
GSSSSKLSMSSMYSSQSSGSSQSKNSSQSGGKPGSSPITKHLSSGSSSTKMKPQKPKSSLMNPSLSKPN
ISPSHSRPPGGSDKLASPMKVPVPGTPSSKAKSPISSGSGSHMSGTSSSSGMKSSSGLGSSGSLSQKTP
PSSNSCTASSSSFSSSGSMSSSQNHGSSKGGKSPSRNKKPSLTAVIDKDKHGVTSGPGGEDPLDGMG
VSTNSSHPMSSKHNMSSGGEFQKREKSDKDKSVSTSGSSVDSSKKTSESKNVGSTGVAKIIISKHDGG
SPSIKAKVTLQKPGESSGELRPQMASSKNYGSPLISGSTPKHERGSPSHSKSPAYTPQNLDSSESSGSS
IAEKSYQNSPSSDDGIRPLPEYSTEKHKHKKEKKVKDKDRDRDRDKDRDKKSHSIPESWSKSPISS
DQSLSMTSNTILSADRP SRLSPDFMIGEEDDLMDVALIGN
```

TRTRPLE - GFP Tag - V

Restriction Sites: SgfI-MluI

Cloning Scheme:



ACCN: NM_004774

ORF Size: 4743 bp

OTI Disclaimer: Due to the inherent nature of this plasmid, standard methods to replicate additional amounts of DNA in E. coli are highly likely to result in mutations and/or rearrangements. Therefore, OriGene does not guarantee the capability to replicate this plasmid DNA. Additional amounts of DNA can be purchased from OriGene with batch-specific, full-sequence verification at a reduced cost. Please contact our customer care team at custsupport@origene.com or by calling 301.340.3188 option 3 for pricing and delivery.

The molecular sequence of this clone aligns with the gene accession number as a point of reference only. However, individual transcript sequences of the same gene can differ through naturally occurring variations (e.g. polymorphisms), each with its own valid existence. This clone is substantially in agreement with the reference, but a complete review of all prevailing variants is recommended prior to use. [More info](#)

OTI Annotation: This clone was engineered to express the complete ORF with an expression tag. Expression varies depending on the nature of the gene.

Components: The ORF clone is ion-exchange column purified and shipped in a 2D barcoded Matrix tube containing 10ug of transfection-ready, dried plasmid DNA (reconstitute with 100 ul of water).

Reconstitution Method:

1. Centrifuge at 5,000xg for 5min.
2. Carefully open the tube and add 100ul of sterile water to dissolve the DNA.
3. Close the tube and incubate for 10 minutes at room temperature.
4. Briefly vortex the tube and then do a quick spin (less than 5000xg) to concentrate the liquid at the bottom.
5. Store the suspended plasmid at -20°C. The DNA is stable for at least one year from date of shipping when stored at -20°C.

RefSeq: [NM_004774.4](#)

RefSeq Size: 5809 bp

RefSeq ORF: 4746 bp

Locus ID: 5469

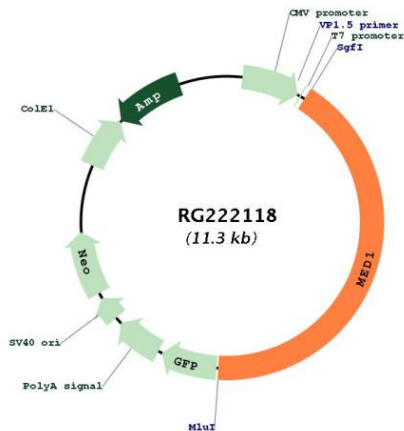
UniProt ID: [Q15648](#)

Cytogenetics: 17q12

Protein Families: Druggable Genome, Nuclear Hormone Receptor, Transcription Factors

Gene Summary:

The activation of gene transcription is a multistep process that is triggered by factors that recognize transcriptional enhancer sites in DNA. These factors work with co-activators to direct transcriptional initiation by the RNA polymerase II apparatus. The protein encoded by this gene is a subunit of the CRSP (cofactor required for SP1 activation) complex, which, along with TFIID, is required for efficient activation by SP1. This protein is also a component of other multisubunit complexes e.g. thyroid hormone receptor-(TR-) associated proteins which interact with TR and facilitate TR function on DNA templates in conjunction with initiation factors and cofactors. It also regulates p53-dependent apoptosis and it is essential for adipogenesis. This protein is known to have the ability to self-oligomerize. [provided by RefSeq, Jul 2008]

Product images:

Circular map for RG222118