

Product datasheet for **RG222108**

CERT1 (NM_005713) Human Tagged ORF Clone

Product data:

Product Type:	Expression Plasmids
Product Name:	CERT1 (NM_005713) Human Tagged ORF Clone
Tag:	TurboGFP
Symbol:	CERT1
Synonyms:	CERT; CERTL; COL4A3BP; GPBP; MRD34; STARD11
Mammalian Cell Selection:	Neomycin
Vector:	pCMV6-AC-GFP (PS100010)
E. coli Selection:	Ampicillin (100 ug/mL)



[View online »](#)

ORF Nucleotide Sequence:

>RG222108 representing NM_005713
 Red=Cloning site Blue=ORF Green=Tags(s)

TTTTGTAATACGACTCACTATAGGGCGGCCGGAATTCGTCGACTGGATCCGGTACCGAGGAGATCTGCC
 GCC**CGGATCGCC**

ATGTCGGATAATCAGAGCTGGAACCTCGTCGGGCTCGGAGGAGGATCCAGAGACGGAGTCTGGGCCGCTG
 TGGAGCGCTGCGGGTCCCTCAGTAAGTGGACAACTACATTCATGGGTGGCAGGATCGTTGGGTAGTTTT
 GAAAAAATAGTCTGAGTTACTACAAATCTGAAGATGAAACAGAGTATGGCTGCAGAGGATCCATCTGT
 CTTAGCAAGGCTGTCATCACACCTCACGATTTTGATGAATGTCGATTTGATATTAGTGAATGATAGTG
 TTTGGTATCTTCGTGCTCAGGATCCAGATCATAGACAGCAATGGATAGATGCCATTGAACAGCACAAAGC
 TGAATCTGGATATGGATCTGAATCCAGCTTGCCTGCACATGGCTCAATGGTGTCCCTGGTGTCTGGAGCA
 AGTGGCTACTCTGCAACATCCACCTCTTCAATCAAGAAAGGCCACAGTTTACGTGAGAAGTTGGCTGAAA
 TGGAAACATTTAGAGACATCTTATGTAGACAAGTTGACACGCTACAGAAGTACTTTGATGCCTGTGCTGA
 TGCTGTCTCTAAGGATGAACTTCAAAGGATAAAGTGGTGAAGATGATGAAGATGACTTTCCTACAACG
 CGTTCTGATGGTACTTCTTGCATAGTACCAACGGCAATAAAGAAAAGTTATTTCCACATGTGACACCAA
 AAGGAATTAATGGTATAGACTTTAAAGGGGAAGCGATAACTTTTTAAAGCAACTACTGCTGGAATCCTTGC
 AACACTTTCTCATTGTATTGAACTAATGGTTAAACGTGAGGACAGCTGGCAGAAGAGACTGGATAAGGAA
 ACTGAGAAGAAAAGAAGAACAGAGGAAGCATATAAAAAATGCAATGACAGAAGTAAAGAAAAATCCCACT
 TTGGAGGACCAGATTATGAAGAAGGCCCTAACAGTCTGATTAATGAAGAAGAGTTCTTTGATGCTGTTGA
 AGCTGCTCTTGACAGACAAGATAAAAATAGAAGAACAGTACAGAGTGAAGGAGGATTACATTGGCCT
 ACATCCTTGCCCTCTGGAGATGCCTTTTCTTCTGTGGGACACATAGATTTGTCCAAAAGCCCTATAGTC
 GCTTCTCCATGTCTCCATTGATCTAGTCACTGCTGATGATGTTACAGATTCAGCTCCAGGT
 TGAAGAGATGGTGCAGAACCACATGACTTACTCATTACAGGATGTAGCGGAGATGCCAATTGGCAGTTG
 GTTGTAGAAGAAGGAGAAATGAAGGTATACAGAAGAGAAGTAGAAGAAAATGGGATTGTTCTGGATCCTT
 TAAAAGCTACCCATGCAGTTAAAGGCGTCACAGGACATGAAGTCTGCAATTATTTCTGGAATGTTGACGT
 TCGCAATGACTGGGAAACAATAAGAAAATTTTATGTGGTGGAAACATTAGCTGATAATGCAATCATC
 ATTTATCAAACACACAAGAGGGTGTGGCCTGCTTCTCAGCGAGACGATTATATCTTTCTGTCATTGCAA
 AGATACCAGCCTTGACTGAAAATGACCCTGAAACTTGGATAGTTTGAATTTTCTGTGGATCATGACAG
 TGCTCCTCTAAACAACCGATGTGTCCGTGCCAAAATAAATGTTGCTATGATTTGCAAACCTTGGTAAGC
 CCACCAGAGGAAACCAGGAAATTAGCAGGGACAACATTTCTATGCAAGATTACATATGTAGCTAATGTGA
 ACCCTGGAGGATGGGCACCAGCCTCAGTGTAAAGGGCAGTGGCAAAGCGAGAGTATCCTAAATTTCTAAA
 ACGTTTTACTTCTTACGTCCAAGAAAAAAGTGCAGGAAAGCCTATTTTGTTC

AG**CGGACCG**ACGCGTACGCGGCCGCTCGAG - GFP Tag - GTTTAA

Protein Sequence:

>RG222108 representing NM_005713
 Red=Cloning site Green=Tags(s)

MSDNQSWNSSGSEEDPETESGPPVERCGVL SKWTNYIHGWQDRWVVLKNNALSYKSEDETEYGCGRSIC
 LSKAVITPHDFDECRFDISVNDVWVYLRQDPDHRQQWIDAIEQHKTESGYGSESSLRRHGMVSLVSGA
 SGYSATSTSSFKKGHSLREKLAEMETFRDILCRQVDTLQKYFDACADAVSKDELQRDKVVEDDEDDFPTT
 RSDGDFLHSTNGNKEKLFPHVTPKINGIDFKGEAITFKATTAGILATLSHCIELMVKREDSWQKRLDKE
 TEKKRRTEEAYKNAMTELKKKSHFGGPDYEEGPNLSINEEFFDAVEAALDRQDKIEEQSQSEKVRHLHP
 TSLPSGDAFSSVGTHRFVQKPYRSSSMSIDLVSASDDVHRFSSQVEEMVQNHMTYSLQDVGGDANWQL
 VVEEGEMKVYRREVEENGLVLDPLKATHAVKGVGTGHEVCNYFWNVDRNDWETTIEFNHVVETLADNAII
 IYQTHKRVPASQRDVLVLSVIRKIPALTENDPETWIVCNFVSDHDSAPLNNRCVRAKINVAMICQTLVLS
 PPEGNQEI SRDNILCKITYVANVNPGGWAPASVLRRAVAKREYPKFLKRFTSYVQEKTAGKPIIF

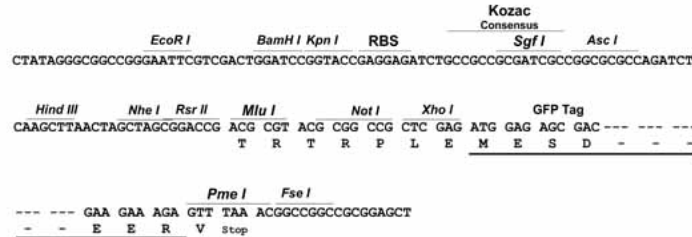
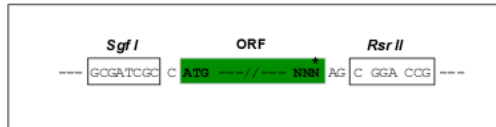
SGP**TRRRLE** - GFP Tag - V

Restriction Sites:

Sgfl-RsrII

Cloning Scheme:

Cloning sites used for ORF Shuttling:


ACCN: NM_005713

ORF Size: 1872 bp

OTI Disclaimer: The molecular sequence of this clone aligns with the gene accession number as a point of reference only. However, individual transcript sequences of the same gene can differ through naturally occurring variations (e.g. polymorphisms), each with its own valid existence. This clone is substantially in agreement with the reference, but a complete review of all prevailing variants is recommended prior to use. [More info](#)

OTI Annotation: This clone was engineered to express the complete ORF with an expression tag. Expression varies depending on the nature of the gene.

Components: The ORF clone is ion-exchange column purified and shipped in a 2D barcoded Matrix tube containing 10ug of transfection-ready, dried plasmid DNA (reconstitute with 100 ul of water).

Reconstitution Method:

1. Centrifuge at 5,000xg for 5min.
2. Carefully open the tube and add 100ul of sterile water to dissolve the DNA.
3. Close the tube and incubate for 10 minutes at room temperature.
4. Briefly vortex the tube and then do a quick spin (less than 5000xg) to concentrate the liquid at the bottom.
5. Store the suspended plasmid at -20°C. The DNA is stable for at least one year from date of shipping when stored at -20°C.

RefSeq: [NM_005713.3](#)
RefSeq Size: 2389 bp

RefSeq ORF: 1875 bp

Locus ID: 10087

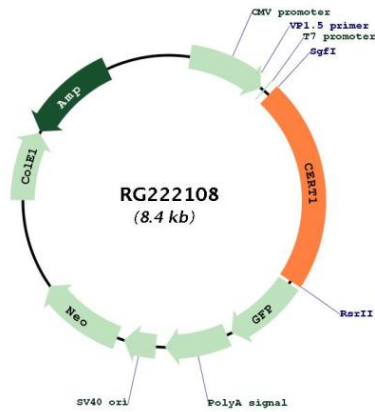
UniProt ID: [Q9Y5P4](#)

Cytogenetics: 5q13.3

Domains: PH, START

Gene Summary: This gene encodes a kinase that specifically phosphorylates the N-terminal region of the non-collagenous domain of the alpha 3 chain of type IV collagen, known as the Goodpasture antigen. Goodpasture disease is the result of an autoimmune response directed at this antigen. One isoform of this protein is also involved in ceramide intracellular transport. Three transcript variants encoding different isoforms have been found for this gene. [provided by RefSeq, Jul 2008]

Product images:



Circular map for RG222108