

Product datasheet for **RG222101**

UNC13A (NM_001080421) Human Tagged ORF Clone

Product data:

Product Type:	Expression Plasmids
Product Name:	UNC13A (NM_001080421) Human Tagged ORF Clone
Tag:	TurboGFP
Symbol:	UNC13A
Synonyms:	Munc13-1
Mammalian Cell Selection:	Neomycin
Vector:	pCMV6-AC-GFP (PS100010)
E. coli Selection:	Ampicillin (100 ug/mL)
ORF Nucleotide Sequence:	>RG222101 representing NM_001080421 Red=Cloning site Blue=ORF Green=Tags(s)

TTTTGTAATACGACTCACTATAGGGCGGCCGGAATTCGTCGACTGGATCCGGTACCGAGGAGATCTGCC
GCC**CGATCGCC**

ATGGGTGGCGGGGCACGTGCACCATTTTCAGTGCAGGTGAGGGTCTGCACAGGAGGAAACCTGCTTGGGG
GCCGCGTCGCCCCTGTCCCCGCAACGAGGAGGTGTGGGGCAGGCGCCCCTTCCGGAGCCAGGCC
CTTTAACGCCCCCAGCCCGCAGCGCCCCGCCCCATCAGGCGTCCCTGGGCTCCGCTGCCGCCCGC
CATCAGCGCCACAGCCGCCCCGCGCCTCCGGCCACCTGCGAGCTCGGAGACATGTCTCTGCTTTGCG
TTGGAGTCAAAAAGCCAAGTTTGTGTTGCCAAGAGAAATTCACACGTACGTGACCTGAAAGTGCA
GAATGTCAAGAGCACGACCATCGCGGTGCGGGGCAGCCAGCCAGCTGGGAGCAGGATTTTCATGTTGAG
ATTAACCGTCTGGATTTGGGACTGACGGTGGAGGTGTGGAATAAGGGTCTCATCTGGGACACAATGGTGG
GCACTGTGTGGATCCCACTGAGGACCATCCGCCAGTCCAATGAGGAGGGCCCTGGAGAGTGGCTGACGCT
GGACTCCCAGGTTCATCATGGCAGACAGTGTGATCTGTGGCACCAAGGACCCACCTTCCACCGCATCCTC
CTGGACACGCGCTTTGAGCTACCCTTAGACATTCCTGAAGAGGAGGCTCGCTACTGGGCAAGAAGCTGG
AGCAGTCAATGCTATGCGGGACCAGGATGAATATTCGTTCCAAGATGAGCAAGACAAGCCTCTGCCTGT
CCCCAGCAACCAAGTGTGCAACTGGAATTTTGGCTGGGGTGAGCAGCACAACGATGACCCCGACAGT
GCAGTGGATGATCGTACAGTACTACCGCAGTAAACGAGCAACAGCATCCCAGCCGCTATTATACTA
CGTCACAACCCAAAGCCTCAGTCCACCAATATTCTGTTCCGCCACCACCCCTGGGCTCCCGGAGTCCCTA
CAGTACTCCATGCACAGTTACGAGGAGTCTCTGAGCCACAAGCCCTCAGCCCCACGGGTAGCAGCCGC
TATGCCTCTTCCGGGAGCTGAGCCAGGGAAGCTCTCAGCTGAGCGAGGACTTCGACCCTGACGAGCACA
GCCTGCAGGGCTCCGACATGGAGGATGAGCGGGACCGGGACTCCTACCACTCCTGCCACAGCTCGGTGAG
CTACCACAAGACTCGCCTCGCTGGGACCAGGATGAGGAAGAGCTGGAGGAGGACCTGGAGGACTTCTG
GAGGAGGAGGAGTGCCTGAAGATGAGGAGGAGCTGGAGGAGGAGGAGGAGGAGGAGGAGGAGGAGGAGG
GCAGTATGCCAGCGTGAAGACGTAGCTGTGGCTGAGCCAAAGACTTCAAACGCATCAGCCTCCCGCC
AGCTGCCCGAGGAAGGAGGACAAGGCCCAAGTGGCACCCACCGAGGCCCGGACATGGCCAAGGTGCC



[View online »](#)

CCCAAGCCAGCCACGCCCGACAAGGTGCCTGCAGCTGAGCAGATCCCTGAGGCTGAGCCACCCAAGGACG
 AGGAGAGTTTCAGGCCGAGAGAGGATGAGGAAGGCCAGGAGGGGCAGGACTCCATGTCCAGGGCCAAGGC
 CAACTGGCTGCGTGCCTTCAACAAGGTGCGGATGCAGCTGCAGGAGGCCCGGGGAGAAGGAGAGATGTCT
 AAATCCCTATGGTTCAAAGGCGGCCAGGGGGCGGTCTCATCATCGACAGCATGCCAGACATCCGCA
 AGAGGAAACCTATCCCCTCGTGAGCGACTTGGCCATGTCCCTGGTCCAGTCCAGGAAAGCGGGCATCAC
 CTCGGCCTTGGCTCCAGCACGTTGAACAACGAGGAGCTGAAAAACCACGTTTACAAGAAGACCCCTGCAA
 GCCTTAATCTACCCCATCTCGTGCACGACGCCACACAACCTCGAAGTGTGGACGGCCACCCAGCCACCT
 ACTGCTACGAGTGCAGGGGCTGCTGTGGGCATCGCGAGGCAGGGCATGCGCTGCACCCAGTGCAGGTGT
 CAAGTGCACGAGAAGTGCCAGGACCTGCTCAACGCCACTGCCTGCAGCGGGCTGCGGAGAAGAGCTCC
 AAGCACGGGGCGGAGGACCCGACACAGAACATCATCATGGTGTCAAGGACCGCATGAAGATCCGGGAGC
 GCAACAAGCCGAGATCTTCGAGCTCATCCAGGAGATCTTCGCGGTGACCAAGACGGCGCACACGCAGCA
 GATGAAGCGGTCAAGCAGAGCGTGTGGACGGCACGTCCAAGTGGTCCGCCAAGATCAGCATCACCGTG
 GTCTGCGCCAGGGCTTGCAGGCAAAGGACAAGACAGGATCCAGTGACCCCTATGTCACCGTCCAGGTGCG
 GGAAGACCAAGAAACGGACAAAAACCATCTATGGGAACCTCAACCCGGTGTGGGAGGAGAATTTCCACTT
 TGATGTCACAATTCCTCCGACCGCATCAAGGTGCGCGTCTGGGACGAGGATGACGACATCAATCCCGC
 GTGAAACAGAGGTTCAAGAGGGAATCTGACGATTTCTGGGGCAGACGATCATTAGGTGCGGACGCTCA
 GCGGCGAGATGGACGTGTGGTACAACCTGGACAAGCGAAGTGCACAACTGCCGTGTCGGGTGCCATCCG
 GCTCCACATCAGTGTGGAGATCAAAGGCGAGGAGAAGGTGGCCCCGTACCATGTCCAGTACACCTGTCTG
 CATGAGAACCTGTTCCACTTCGTGACCGACGTGCAGAACAATGGGGTCTGGAAGATCCCAGATGCCAAGG
 GTGACGATGCCTGGAAGGTTTACTACGATGAGACAGCCAGGAGATTGTGGACGAGTTTGCATGCGCTA
 CGGCGTCGAGTCCATCTACCAAGCCATGACCCACTTTGCCTGCCTCTCCTCCAAGTATATGTGCCAGGG
 GTGCTGTCCGTCATGAGCACCTGTGCGCAACATCAATGCCTACTACGCACACACCACCCGCTCCACCA
 ACGTGTCTGCCTCCGACCGCTTCCGCCCTCAACTTTGGGAAAGAGCGTTCGTGAAACTCCTGGACCA
 GCTGCATAACTCCCTGCGGATTGACCTCTCAATGTACCGGAATAACTTCCAGCCAGCAGCCGGAGAGA
 CTCCAGGACCTCAATCCACTGTGGACCTTCTACCAGCATCACCTTCTTTCGGATGAAGGTACAAGAAC
 TCCAGAGCCCGCCGAGCCAGCCAGGTGGTAAAGGACTGTGTGAAAGCCTGCCTTAATTCTACCTACGA
 GTACATCTTCAATAACTGCCATGAACTGTACAGCCGGGAGTACCAGACAGACCCGGCCAAGAAGGGGAA
 GTTCTCCAGAGGAACAGGGGCCAGCATCAAGAACTCGACTTCTGGTCCAAGCTGATTACCCTCATAG
 TGTCCATCATTGAGGAAGACAAGAATTCCTACACTCCCTGCCTCAACCAGTTTCCCAGGAGCTGAATGT
 GGGTAAAATCAGCGCTGAAGTGTGGAATCTGTTTGCCTAAGACATGAAGTACGCCATGGAGGAGCAC
 GACAAGCATCGTCTATGCAAGAGTGCCGACTACATGAACCTCCACTTCAAGGTGAAATGGCTCTACAATG
 AGTATGTGACGGAACCTCCCGCCTTCAAGGACCCGCTGCCTGAGTACCCTGCATGTTTTGAACCTTCGT
 CATCCAGTGGCTGGATGAGAATGAGGAGGTGTCCCGGATTTCTGCACGGTGCCTGGAGCGAGACAAG
 AAGGATGGGTCCAGCAGACCTCAGAGCATGCCCTATTCTCCTGCTCCGTGGTGGATGTTTTCTCCAAAC
 TCAACCAGAGCTTTGAAATCATCAAGAACTCGAGTGTCCCGACCCCTCAGATCGTGGGGCACTACATGAG
 GCGCTTTGCCAAGACCATCAGTAATGTGCTCCTCCAGTATGCAGACATCATCTCCAAGGACTTTGCCTCC
 TACTGCTCCAAGGAGAAGGAGAAAGTGCCTGCATTCTCATGAATAACACTCAACAGCTACGAGTTACAG
 TGGAGAAGATGTTCAAGCCATGGGAGGAAAGGAGCTGGATGCTGAAGCCAGTGCATCCGAAGGAGCT
 TCAGGTGAAACTCAATAACGCTTTGGATGAGCTCAGCCGGTGTGTTGCTACCAGCTTCCAGCCGACATT
 GAAGAGTGTGTCAAACAGATGGGTGACATCCTTAGCCAGGTTAAGGGCACAGGCAATGTGCCAGCCAGTG
 CCTGCAGCAGCGTGGCCAGGACGCGGACAATGTGTTGCAGCCATCATGGACCTGCTGGACAGCAACCT
 GACCCCTTTTGCAAAATCTGTGAGAAGACTGTGCTGAAGCGAGTGTGAAGGAGCTGTGGAAGCTGGTT
 ATGAACACCATGGAGAAAACCATCGTCTGCCGCCCTCACTGACCAGACGATGATCGGGAACCTTTGA
 GAAAACATGGCAAGGGATTAGAAAAGGGCAGGGTGAATTTGCCAAGCCACTCAGACGGAACCCAGATGAT
 CTTCAATGCAGCAAGGAGCTGGGTGAGCTGTCCAACTCAAGGATCACATGGTACGAGAAGAAGCCAAG
 AGCTTGACCCAAAGCAGTGCAGGTTGTTGAGTTGGCCCTGGACACCATCAAGCAATATTTCCACGCGG
 GTGGCGTGGGCTCAAGAAGACCTTCTGGAGAAGAGCCCGACCTGCAATCCTTGCCTATGCCCTGTC
 GCTCTACACGCAGGCCACCGACCTGCTAATCAAGACCTTTGTACAGACGCAATCGGCCAGGGCTTGGGT
 GTAGAAGACCCTGTGGTGAAGTCTGTCCATGTTGAGCTGTTCACTCATCCAGGAACTGGGGAACACA
 AGGTACAGTGAAGTGGTGGCTGCCAATGACCTCAAGTGGCAGACTTCTGGCATCTTCCGGCCGTTTCAT
 CGAGGTCAACATCATTGGGCCAGCTCAGCGACAAGAAACGCAAGTTTGCAGCAAAATCCAAGAACAAT
 AGCTGGGCTCCCAAGTACAATGAGAGCTTCCAGTTCACGCTGAGCGCCGACGCGGGTCCCAGTGCATG

AGCTGCAGGTGTGCGTCAAGGACTACTGCTTCGCGCGGAGGACCGCACGGTGGGGCTGGCCGTGCTGCA
 GCTGCGTGAGCTGGCCAGCGCGGGAGCGCCGCTGCTGGCTGCCGCTCGGCCGCCCATCCACATGGAC
 GACACGGGCTCACGGTGTGCGAATCCTCTCGCAGCGCAGCAACGACGAGGTGGCCAAGGAGTTCGTGA
 AGCTCAAGTCGGACACCGCTCCGCCGAGGAGGGCGGTGCCGCGCTGCGCCT

ACGCGTACGCGGCCGCTCGAG - GFP Tag - GTTTAA

Protein Sequence:

>RG222101 representing NM_001080421
 Red=Cloning site Green=Tags(s)

MGGGGTCTISVQVRVCTGGNLLGRRRPLSPCNEEVWGEAPLPGARPFNAPPARSAPAPSGVPLRLPAP
 HQRHSRPGRLRPTCELGDMSLLCVGVKAKFDGAQEKFNYYVTLKVQNVKSTTIAVRGSQPSWEQDFMFE
 INRLDLGLTVEVWNKGLIWDTMVGTWVIPLRIRQSNEEGPGEWLTLDSQVIMADSEICGKDPHFHRL
 LDTRFELPLDIPPEEARYWAKKLEQLNAMRDQDEYSFQDEQDKPLPVPSNQCCNWNYYFGWGEQHNDPDS
 AVDDRSDYRSETSNSIPPPYYTTSQPNASVHQYSVRPPPLGSRESYSDSMHSYEEFSEPQALSPGSSR
 YASSGELSQSSQLSEDFDPDEHSLQGSMDERDRDSYHSHSSVSYHKDSPRWQDEEELLEDLEDFL
 EEEELPEDEEELVEEVEPDDLGSYAQREDVAVAEPKDFKRISLPPAAPGKEDKAPVAPTEAPDMAKVA
 PKPATPDKVPAEQIPEAEPPKDEESFRPREDEEGQEQDMSRAKANWLRANFKVVMQLQEARGEEMES
 KSLWFKGGPGGGLIIDSMPDIRKRKPIPLVSDLAMSLVQSRKAGITSALASSTLNNEELKNHVYKTLQ
 ALIYPISTTPHNFEVWTATTPTYCYECEGLLWGIARQGMRCTECGVKCHEKQDLLNADCLQRAAEKSS
 KHGAEDRTQNIIMVLKDRMKIRERNKPEIFELIQEIFAVTKTAHTQMKAVKQSVLDGTSKWSAKISITV
 VCAQGLQAKDKTGSSDPYVTVQVGTKKRTKTIYGNLNPVWEENFHFECHNSSDRIKVRVWDEDDDIKSR
 VKQRFKRESDDFLGQTIIEVRTLSGEMDVWYNLDKRTDKSAVSGAIRLHISVEIKGEEKVAPYHVQYTC
 HENLFHFVTDVQNGVVKIPDAKGDDAWKVVYDETAQEIYDEFAMRYGVESIYQAMTHFACLSSKYMCPG
 VPVAVMSTLLANINAYAHHTASTNVASDRFAASNFGKERFVKLLDQLHNSLRIDL SMYRNNFPASSPER
 LQDLKSTVDLLTSITFFRMKVQELQSPRASQVVKDCVKAACLNSTYEIFNNCHELYSREYQTDPAKKE
 VLPEEQGSPKIKNLDVSKLITLIVSIIIEEDKNSYTPCLNQFPQELNVGKISAEVMWNLFAQDMKYAMEEH
 DKHRLCKSADYMNLFKVKWL YNEYVTELPFAKDRVPEYPAWFEPFVIQWLDENEVSRDFLHGALERDK
 KDFGQQTSEHALFSCSVVDVFSQLNQSFEEIKKLECPDPQIVGHYMRRAKTISNVLLQYADIISKDFAS
 YCSKEKEKVPICILMNNTQQLRVQLEKMFAMGGKELDAEASDILKELQVKLNNVLEDEL SRVFATSFQPHI
 EECVKQMGDILSQVKGTVNPASACSSVAQDADNVLPQIMDLLDSNLTLFAKICEKTVLKRVLKELWKL
 MNTMEKTI VLPPLTDQTMIGNLLRKHGKLEKGRVKLPSHSDGTQMI FNAAKELGQLSKLDHVMREEAK
 SLTPKQCAVVELALDTIKQYFHAGGVGLKKTFLKSPDLQSLRYALSLYTQATDLLIKTFVQTQSAQGLG
 VEDPVGEVSVHVELFTHPGTGEHKVTVKVVAANDLKWQTSIGIFRPFIEVNIIGPQLSDKKRKFATKSKNN
 SWAPKYNESFQFTL SADAGPECYELQVCVKDYCFAREDRTVGLAVLQLRELAQRGSAACWLPGRRIHMD
 DTGLTVLRILSQRSNDEVAKEFVKLKS DTRSAAEEGGAAPAP

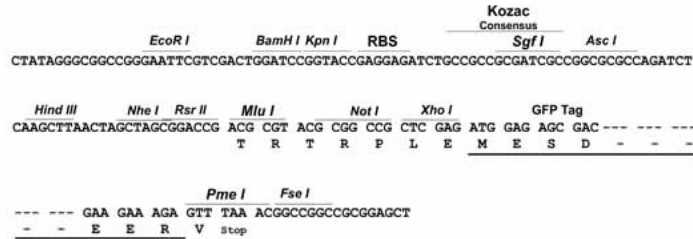
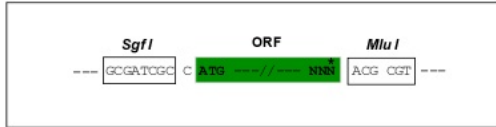
TRTRPLE - GFP Tag - V

Restriction Sites:

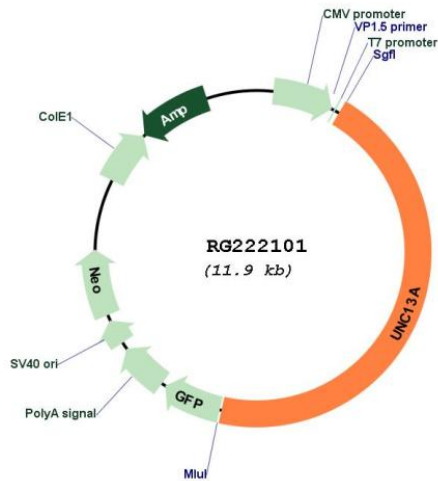
Sgfl-MluI

Cloning Scheme:

Cloning sites used for ORF Shutting:



Plasmid Map:



ACCN:	NM_001080421
ORF Size:	5373 bp
OTI Disclaimer:	The molecular sequence of this clone aligns with the gene accession number as a point of reference only. However, individual transcript sequences of the same gene can differ through naturally occurring variations (e.g. polymorphisms), each with its own valid existence. This clone is substantially in agreement with the reference, but a complete review of all prevailing variants is recommended prior to use. More info
OTI Annotation:	This clone was engineered to express the complete ORF with an expression tag. Expression varies depending on the nature of the gene.
Components:	The ORF clone is ion-exchange column purified and shipped in a 2D barcoded Matrix tube containing 10ug of transfection-ready, dried plasmid DNA (reconstitute with 100 ul of water).
Reconstitution Method:	<ol style="list-style-type: none">1. Centrifuge at 5,000xg for 5min.2. Carefully open the tube and add 100ul of sterile water to dissolve the DNA.3. Close the tube and incubate for 10 minutes at room temperature.4. Briefly vortex the tube and then do a quick spin (less than 5000xg) to concentrate the liquid at the bottom.5. Store the suspended plasmid at -20°C. The DNA is stable for at least one year from date of shipping when stored at -20°C.
RefSeq:	NM_001080421.1 , NP_001073890.1
RefSeq Size:	10102 bp
RefSeq ORF:	5112 bp
Locus ID:	23025
UniProt ID:	Q9UPW8
Cytogenetics:	19p13.11
Protein Families:	Druggable Genome
Gene Summary:	This gene encodes a member of the UNC13 family. UNC13 proteins bind to phorbol esters and diacylglycerol and play important roles in neurotransmitter release at synapses. Single nucleotide polymorphisms in this gene may be associated with sporadic amyotrophic lateral sclerosis. [provided by RefSeq, Feb 2012]