

Product datasheet for **RG222087**

DORFIN (RNF19A) (NM_015435) Human Tagged ORF Clone

Product data:

Product Type:	Expression Plasmids
Product Name:	DORFIN (RNF19A) (NM_015435) Human Tagged ORF Clone
Tag:	TurboGFP
Symbol:	RNF19A
Synonyms:	RNF19
Mammalian Cell Selection:	Neomycin
Vector:	pCMV6-AC-GFP (PS100010)
E. coli Selection:	Ampicillin (100 ug/mL)



[View online »](#)

ORF Nucleotide Sequence:

>RG222087 representing NM_015435
 Red=Cloning site Blue=ORF Green=Tags(s)

TTTTGTAATACGACTCACTATAGGGCGGCCGGAATTCGTGACTGGATCCGGTACCGAGGAGATCTGCC
 GCC**CGCATCGCC**

ATGCAAGAACAAGAAATAGGTTTTATCTCTAAATAAATGAAGGGCTGTGTGTAACACTGACCCTGTCT
 CAATTCTAACAAGCATTTTAGACATGAGTTTACATCGGCAAAATGGTTTCAGATCGAGATCTTCAGTCCTC
 TGCTTCATCTGTGAGCTTGCCTTCAGTCAAAAAGGCACCCAAAAAAGAAGAATTTCAATAGGCTCCCTG
 TTTCCGAGGAAAAAGATAACAAACGTAATCAAGGGAGCTAAATGGCGGGTGGATGGAATGCAAGTA
 TTGAAAGTATACATTCTGAAATGTGACTGATAAGAACTCCATTTTCTCTACAAATACCTCTTGACAA
 TGGATTAACCTCCATCAGCAACAAATGGAGACTTCATAGAGTGCCTTTTGCCTTTTGCGCATTCT
 AAAGACAGATTTCTGATATAATGACTTGTGCATCACAGATCTTGTGTGGATTGCTTACGACAATATTTAA
 GGATAGAAATCTCTGAAAGCAGAGTTAATATTAGTTGCCAGAATGACTGAACGGTTTAAATCCCATGA
 TATTCGTTGATATTAAGTGATGATGTCTTGATGGAAAAATACGAAGAATTTATGCTTAGACGGTGGCTT
 GTTGACAGATCCTGATTGTAGGTGGTGTCCAGCTCCAGACTGTGGATATGCTGTGATAGCATTGGATGTG
 CCAGCTGTCCAAATTAACCTGTGGGCGAGAGGGCTGTGGAACAGAGTTTTGCTACCACTGTAAACAGAT
 TTGGCACCCCAACCAGACCTGTGATGCTGCTCGACAAGAGAGAGCCAGAGCTTACGTTTGAGAATA
 CGTTCTTCATCCATTAGTTATAGTCAAGAGTCTGGAGCAGCAGCTGATGATATAAAGCCATGTCCACGAT
 GTGCTGCTTATAATAAAGATGAATGATGGGAGCTGCAATCACATGACATGTGCTGTTTGTGGTTGTGA
 GTTTTGTGGTTGTGATGAAAGAAATCTCAGATTTGCATTATCTAAGTCCATCAGGATGACTTTTTGG
 GGAAGAAACCCCTGGAGCCGAAAGAAGAAATATTGTGCAACTGGGAACACTGGTTGGTCTCCTGTCCG
 GAATCGCTTAAATAGCTGGCATTGCTATTCCTGCAATGATTATTGGCATTCTGTGATGTGGCCGCA
 GATTCACAATCGCTATGAAGGCAAGGATGTTTCAAAGCACAACCGAATTTGGCCATAGCAGGTGGTGTA
 ACGTTGTCTGTAATCGTGTCTCCAGTAGTAGTGCAGTACTGTAGGTATCGGTGTTCTATTATGTTAG
 CTTATGTCTATGGCGTAGTTCCAATTTCTCTTTGTCGAAGCGGAGTTGTGGAGTCTCAGCAGGCAATGG
 AAAAGGAGTTAGGATTGAATTTGATGATGAAAATGATATAAATGTTGGTGGAACTAACACAGCTGTAGAC
 ACAACATCAGTAGCAGAAGCAGACACAACCAAGCATAGGGGAGGGAAGTGTGGTGGGCTGACTGGCA
 GTTTGAGTGCAAGTGGAAGCCACATGGATCGAATAGGAGCCATCCGAGACAACCTGAGTAAACGGCCAG
 CACCATGGCACTAGCTGGAGCCAGTATAACGGGGAGTCTGTGAGGAGTCCATGGTAAACTGTTTTAAC
 AGGTTGGAAGTACAAGCAGATGTACAGAAAGAACGGTACAGTCTAAGTGGAGAATCTGGCACAGTCAGCT
 TGGGAACAGTTAGTGATAATGCCAGCACCAAGCAATGGCAGGATCCATTCTGAATTCCTACATCCCAT
 GGACAAAGAAGGCAACAGTATGGAGGTGCAAGTAGATATTGAGTCAAAGCCATCCAAATTCAGGCACAAC
 AGTGGAAGCAGTAGTGTGGATGATGGCAGTGCCACCCGAAGTCATGCTGGCGGTTTCATCCAGTGGCTTGC
 CTGAAGGTAATCTAGTGCCACCAAGTGGTCCAAAGAAGCAACAGCAGGGAAAAAATCAAAAAGTGGTAA
 ACTGAGGAAAAAGGGTAACATGAAGATAAATGAGACGAGAGAGGACATGGATGCACAGTTGTTAGAACA
 CAAAGCACGAACTCAAGTGAATTTGAGGCTCCATCCCTCAGTGACAGTATGCCTTCTGTAGCAGATTCTC
 ACTCTAGTCATTTTTCTGAATTTAGTTGTTCTGACCTAGAAAGCATGAAAACCTTCTGTAGTCATGGTTC
 CAGTGATTATCACACCCGCTTTGCTACTGTTAACATTCTCCTGAGGTAGAAAATGACCGTCTGGAAAA
 TCCCCACATCAGTGTAGCATTCTGTGGTTACCCAACTGCTTCTGTTTCCAGAAGTTTACAGTTGAATC
 ATATTGCTGAAGAACATGGTAACATGGAATAAAACCTAATGTTGATTTATTTTTGGCGATGCACTAAA
 AGAAACAAATAACAACCACTCACATCAGACAATGGAATTAAGTTGCAATTCAGACTGAAAT

ACCGTACGCGGCCGCTCGAG - GFP Tag - GTTTAA

Protein Sequence: >RG222087 representing NM_015435
 Red=Cloning site Green=Tags(s)

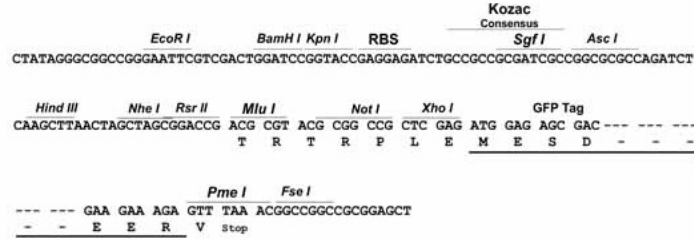
MQEQEIGFISKYNEGLCVNTDPVSILTSILDMSLHRQMGSDDLQSSASSVSLPSVKKAPKKRRISIGSL
 FRRKKDNKRKSRELNGGVDGIASIESIHSEMCTDKNSIFSTNTSSDNLTSISKQIGDFIECPLCLRHS
 KDRFPDIMITCHHRSCVDCLRQYLRIEISESRVNI SCPECTERFNPHDIRLILSDDVLMKEYEFLRRWL
 VADPDCRWCPAPDCGYAVIAFGCASCPLKTCGREGCGTEFCYHCKQIWHPNQTCDAARQERAQSLRLRTI
 RSSSISYSQESGAAADDIKPCPRCAAYIIKMNDGSCNHMTCAVCGCEFCWLCMKEISDLHYLSPSGCTFW
 GKKPWSRKKKILWQLGTLVGAPVGIALLIAGIAIPAMIIGIPVYVGRKIHNRYEKDVSKHKRNLAAGGV
 TLSVIVSPVVAAVTVGIGVPIMLAYVYGVVPISLCRSGGCVSAGNGKGVRIEFDENDINVGGTNTAVD
 TTSVAEARHNPSIGEGSVGGLTGSLSASGSHMDRIGAIRDNLSETASTMALAGASITGSLSGSAMVNCFN
 RLEVQADVQKERYSLSGESGTVSLGTVSDNASTKAMAGSILNSYIPLDKEGNSMEVQVDIESKPSKFRHN
 SGSSSVDDGSATRSHAGGSSSGLPEGKSSATKWSKEATAGKSKSGKLRKKGNMKINETREDMDAQLLEQ
 QSTNSSEFEAPSLSDSMPVADSHSHFSEFSCSDLESMTSCSHGSSDYHTRFATVNILPEVENDRLN
 SPHQCSISVVTQTASCSEVSQLNHIAEEHGNGIKPNVDLYFGDALKETNNHSHQTMELKVAIQTEI

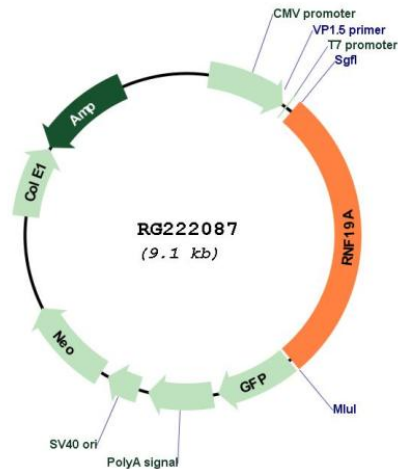
TRTRPLE - GFP Tag - V

Restriction Sites: Sgfl-MluI

Cloning Scheme:

Cloning sites used for ORF Shutting:



Plasmid Map:


ACCN: NM_015435

ORF Size: 2514 bp

OTI Disclaimer: The molecular sequence of this clone aligns with the gene accession number as a point of reference only. However, individual transcript sequences of the same gene can differ through naturally occurring variations (e.g. polymorphisms), each with its own valid existence. This clone is substantially in agreement with the reference, but a complete review of all prevailing variants is recommended prior to use. [More info](#)

OTI Annotation: This clone was engineered to express the complete ORF with an expression tag. Expression varies depending on the nature of the gene.

Components: The ORF clone is ion-exchange column purified and shipped in a 2D barcoded Matrix tube containing 10ug of transfection-ready, dried plasmid DNA (reconstitute with 100 ul of water).

Reconstitution Method:

1. Centrifuge at 5,000xg for 5min.
2. Carefully open the tube and add 100ul of sterile water to dissolve the DNA.
3. Close the tube and incubate for 10 minutes at room temperature.
4. Briefly vortex the tube and then do a quick spin (less than 5000xg) to concentrate the liquid at the bottom.
5. Store the suspended plasmid at -20°C. The DNA is stable for at least one year from date of shipping when stored at -20°C.

RefSeq: [NM_015435.4](#)

RefSeq Size: 4357 bp

RefSeq ORF: 2517 bp

Locus ID: 25897

UniProt ID: [Q9NV58](#)

Cytogenetics:	8q22.2
Domains:	RING, IBR
Protein Families:	Druggable Genome, Transcription Factors, Transmembrane
Gene Summary:	This gene encodes a member of the ring between ring fingers (RBR) protein family, and the encoded protein contains two RING-finger motifs and an in between RING fingers motif. This protein is an E3 ubiquitin ligase that is localized to Lewy bodies, and ubiquitylates synphilin-1, which is an interacting protein of alpha synuclein in neurons. The encoded protein may be involved in amyotrophic lateral sclerosis and Parkinson's disease. Alternative splicing results in multiple transcript variants. [provided by RefSeq, Jul 2013]