

Product datasheet for **RG222077**

MAML2 (NM_032427) Human Tagged ORF Clone

Product data:

Product Type:	Expression Plasmids
Product Name:	MAML2 (NM_032427) Human Tagged ORF Clone
Tag:	TurboGFP
Symbol:	MAML2
Synonyms:	MAM-3; MAM2; MAM3; MLL-MAML2
Mammalian Cell Selection:	Neomycin
Vector:	pCMV6-AC-GFP (PS100010)
E. coli Selection:	Ampicillin (100 ug/mL)
ORF Nucleotide Sequence:	>RG222077 representing NM_032427 Red=Cloning site Blue=ORF Green=Tags(s)

TTTTGTAATACGACTCACTATAGGGCGGCCGGAATTCGTCGACTGGATCCGGTACCGAGGAGATCTGCC
GCC**CGATCGCC**

ATGGGGGACACAGCGCCCCGAGGCCCGCAGGAGGGCTAGGGGGGGCCTCTGGGGCGGGGCTCCTTG
GAGGGGGCTCAGTCACCCCGAGAGTGCACAGTGCATCGTGGAGCGCCTCCGGGCTCGGATCGCTGTCTG
CCGCCAACACCACCTGAGCTGTGAAGGACGATGAACGAGGTAGGGCCGAGAGCTCAGACCGGAAAGA
GAAAGCACCTTGAGCTCCTGAGCCTGTACAGCATGGCCAGGGGCAAGGAAAGCTGGCAAACACACCA
AGGCCACCGCCACTGCTGCCACCACTACAGCCCTCCACCGCCCTGCTGCCCTCCTGCGGCCTCCCA
AGCAGCAGCAACAGCAGCCCCACCGCCCCACAGACTATCACCATCACCAACAGCAGCAGCTGTGAAC
AGTAGCAATAATGGTGGCAGTGGTGGGATAAACGAGAGCAGCAGCCGCCGCTTCAACCCAGGGGACC
AGAGGAACTCAGCCCTGATTGCGCTCCAGGGTTCTTGAAGAAAGAAACAGGTAGTTAACCTATCTCCTGC
CAACAGCAAGCGACCCAATGGCTTTGTGGACAACCTATTTCTTGATATCAAAAGAATTCGTGTTGGGGAG
AATCTCTCTGCAGGACAAGGTGGCTCCAAATAAACAATGGACAAAGTCAGATTATGTCAGGGACCTTGC
CTATGAGCAAGCACCCCTGCGAAAGACTAACACTCTGCCATCCCATACACATTTCTCTGGAATGGCCT
GTTTAAACATGGGCTTAAAGGAGGTAAGAAGGAGCCAGGAGAGACTCTGTCTTGCAGTAAGCACATGGAT
GGCCAAATGACCAAGAGAATATTTTTCTAATAGGTACGGAGAGCACCCTGGAGAACAAGTGTGGATC
CTGAGCTGCAGGAACTGTTCAATGAAGTACCAACATATCTGTGCCTCCCATGAGTGACCTTGAAGTGA
GAACATGATCAATGCCACCATAAAGCAGGATGACCCATTTAACATTGACTTGGGTGAGCAAGCCAGAGG
AGCACACCTAGGCCCTCCTTACCATGGAGAAAATAGTGATCAAAAGTGAATACTCACCGGGCTTGACTC
AGGGCCCTCAGGCTCTCCTCAGCTGAGGCCCCCATCAGCTGGCCCGCATTCTCCATGGCCAACTCTGC
CCTCTCCACTTCGTCTCCAATCCCTTCAGTCCCTCAGAGCCAGGCTCAGCCTCAGACAGGCTCCGGAGCA
AGCCGGGCTTGCAAGCTGGCAGGAAGTATCCCATGCCAGCAGCTCAAACAGATAGCTGCTAATCGTC
AGCAGCATGCCCGGATGCAGCAGCACCAGCAGCAGCACCAGCCTACCAACTGGTCAGCCTTGCCCTCTTC
TGCTGGACCATCACAGGTCCATTTGGCAGGAGAAAATCCCCAGCCCTCTTTTGGTCAGCAGACATTC



[View online »](#)

AGCCACAGAGCTCCCCATGCCTGGGGTAGCTGGCGGCAGCGGCCAGTCGAAAAGTAATGGCTAACTACA
TGTACAAGGCCGGCCCTCAGCCAGGGTGGGCACCTAGATGTCCTCATGCAGCAAAAGCCTCAGGATCT
CAGTCGAAGTTTTATTAACAACCCGACCCAGCCATGGAGCCCCGTCAGGGCAACACCAAGCCTTTGTTT
CATTTTAACTCAGATCAAGCGAACAGCAGATGCCTTCTGTTTTGCCTTCCCAGAACAAGCCTTCTCTCC
TACACTACACCAACAGCAACAGCAGCAACAGCAGCAGCAGCAGCAGCAGCAGCAGCAGCAGCAGCAGCA
ACAGCAGCAGCAGCAACAGCAACAGCAACAGCAACAGCAGAGTTCAATTTAGCTCAACAACAGCAA
AACAGCAACAACAGCAGCAGCAGCAGCAACAACCATCTTCTAGCCTGCCAATCTCTACCAAGCCA
GCCTTTGCTAAGGTCACCTTTGCCACTTCAAGCAAAAGCTCCTACTTCAAGCAATGCAGAATCAGCCATT
GCAGGAATGGGATACCAAGTCTCCAACAACAGAGACAGGATCAACACTCTGTGGTAGGCCAGAACACAG
GCCCCAGTCCAAGTCTAACCCTGCTCAAATCCAACACTGGAAGTGGTTACATGAACTCCAGCAATC
ACTGTTGAATCAGCAATTGATGGGAAAGAAGCAGACTCTACAGAGGCAGATCATGGAGCAGAAACAGCAA
CTTCTTCCAGCAGCAGATGCTGGCTGACGCGGAGAAAATTGCTCCACAAGATCAGATAAACCGACATT
TGTCAGGCCACCTCCAGATTATAAAGACCAAAGAAGAAATGTGGCAATATGCAACCAACTGCTCAGTA
TTCTGGTGGCTCATCCACAATAAGCTTAACTCTAACCAGGCTTTGGCAAACCCAGTTTCAACACACACC
ATTTTAACTCCCAATTCAGCCTCTGTCTACTTCTCACGGACAAGAATGCCATCATTATCTACAGCAG
TTCAGAATATGGGGATGTATGGAATCTGCCTTGTAAATCAACCTAACACATACAGTGTCACTTCAGGAAT
GAATCAATTGACCAACAGAGAAACCAAGCAATTGTTAGCAAAATCAAAACAACCCATATGATGCCACGG
CCACCTACCTTAGGGCCAAGTAATAAACAATGTAGCCACTTTTGGAGCTGGATCTGTTGGTAATTCAC
ACAATTGAGACCAAAATTAACCCATAGTATGGCAAGCATGCCACCACAGAGAACATCAAACGTAATGAT
CACATCCAACACAACGACCAAACTGGGCCTCTCAAGAAGGAACAAGCAAAACAGCAAGAAGCCCTGACG
TCTGCAGGAGTCCGCTTCCCACAGGTACACCTGCAGCCTATACCCAAATCAGTCACTGCAACAGGCAG
TAGGTAGCCAGCAATTTCCCAGAGGGCAGTGGCTCCTCCTAACCAGTTAACACCAGCAGTGCAAAATGAG
ACCCATGAACCAATGAGCCAAACACTAAATGGGCAAACCATGGGTCCCTCAGGGGTCTGAATCTCAGA
CCCAATCAGCTAAGCACACAGATTTTGCCTAATTTGAATCAGTCAGGAACAGGGTTGAATCAGTCGAGGA
CGGGCATCAACCAGCCACCATCCCTGACGCCAGCAATTTTCTTCAACCAACCAAAAGTTCCAGGGCTTT
TCAAGGAACTGACCACAGCAGTGACTTAGCTTTTACTTCTCAGCCAACAAAATGATAACATGGGCCCT
GCCCTAACAGTGATGCTGATTTTATTGATTCTTTATTGAAGACAGAGCCTGGTAATGATGACTGGATGA
AAGACATCAATCTTGATGAAATCTTGGGAACAATTCC

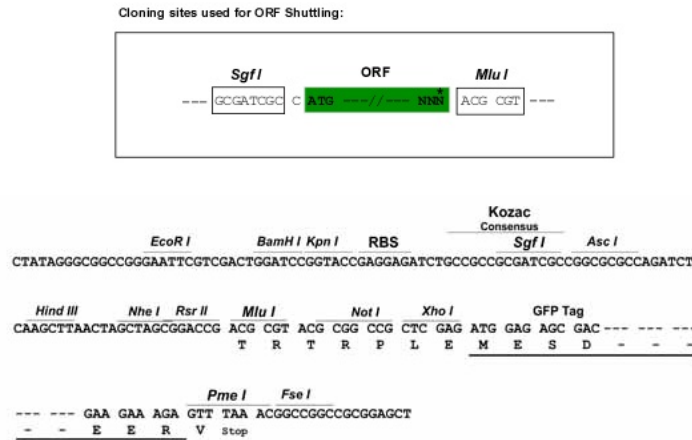
ACGCGTACGCGGCCGCTCGAG - GFP Tag - GTTTAA

Protein Sequence: >RG222077 representing NM_032427
 Red=Cloning site Green=Tags(s)

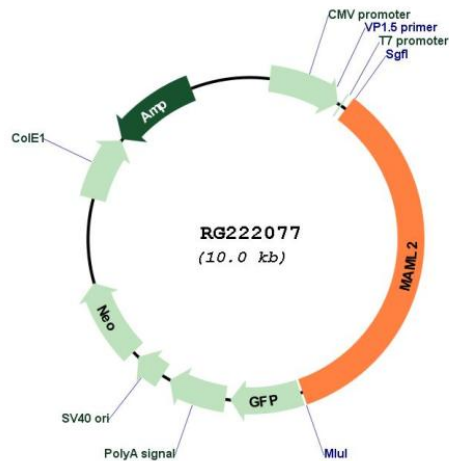
MGDTAPPQAPAGGLGGASGAGLLGGGSVTPRVHSAIVERLRARIAVCRQHHLSCGGRYERGRAESSDRER
 ESTLQLLSLVQHGGQARKAGKHTKATATAATTTAPPPPAAPPAASQAAATAAPPPPDYHHHHQQLLN
 SSNNGSGGINGEQPPASTPGDQRNSALIALQGLKRRKQVVNLSPANSKRPNPFVNSFLDIKRIRVGE
 NLSAGQGLQINNGSQIMSGTLPMSQAPLRKTNLPSHTHSPGNGLFNMGLKEVKKEPGETLSCSKHMD
 GQMTQENIFPNRYGDDPGEQLMPELQELFNELTNI SVPPMSDLELENMINATIKQDDPFNIDLGQQSQR
 STPRPSLPMKIVIKSEYSPGLTQGPSGSPQLRPPSAGPAFMSANSALSTSSPIPSPVPSQAQPQTGSGA
 SRALPSWQEVSHAQQLKQIAANRQQHARMQHQHQHPTNWSALPSSAGPSPGPFQEKIPSPSFGQQT
 SPQSSPMPGVAGGSGQSKVMANYMYKAGPSAQQGHLDVLMMQKPKDLRSF INNPHPAMEPRQGNTPKF
 HFNSDQANQMPVLPSONKPSLLHYTQQQQQQQQQQQQQQQQQQQQQQQQQQQQQQSSISAQQQQ
 QQSSISAQQQQQQQQQQQQQQQQQQQQQQQQQQSSQAQSLPSQPLLRSPPLPQKLLLQMQNQPI
 AGMGYQVSQQQRQDQHSVVGQNTGPSNPNPCSNPNTGSGYMNSQQSLLNQQLMGKKQTLQRQIMEKQQ
 LLLQQMLADA EK IAPQDQINRHL SRPPPDYKDQRRNVGNMQPTAQYSGGSTISLNSNQALANPVSTHT
 ILTPNSSLLSTSHGTRMPSLSTAVQNMGMYNLPCNQPNYTSVTSGMNQLTQQRNPKQLLANQNNPMPR
 PPTLGPSSNNNVATFGAGSVGNSQQLRPNLTHSMAMPQRTSNVMTSNTTAPNWSAQEGTSKQEQEALT
 SAGVRFPTGTPAAYTPNQLQAVGSQQFSQRAVAPPNQLTPAVQMRPMNQMSQTLNGQTMGPLRGLNLR
 PNQLSTQILPNLNQSGTGLNQSRTGINQPPSLTPSNFSPNQSSRAFGQTDHSSDLAFDFLSQQNDNMGP
 ALNSDADFIDSLKTEPGNDDWMKDINLDEILGNNS

TRTRPLE - GFP Tag - V

Restriction Sites: SgfI-MluI
 Cloning Scheme:



Plasmid Map:



ACCN: NM_032427

ORF Size: 3468 bp

OTI Disclaimer: The molecular sequence of this clone aligns with the gene accession number as a point of reference only. However, individual transcript sequences of the same gene can differ through naturally occurring variations (e.g. polymorphisms), each with its own valid existence. This clone is substantially in agreement with the reference, but a complete review of all prevailing variants is recommended prior to use. [More info](#)

OTI Annotation: This clone was engineered to express the complete ORF with an expression tag. Expression varies depending on the nature of the gene.

Components: The ORF clone is ion-exchange column purified and shipped in a 2D barcoded Matrix tube containing 10ug of transfection-ready, dried plasmid DNA (reconstitute with 100 ul of water).

Reconstitution Method:

1. Centrifuge at 5,000xg for 5min.
2. Carefully open the tube and add 100ul of sterile water to dissolve the DNA.
3. Close the tube and incubate for 10 minutes at room temperature.
4. Briefly vortex the tube and then do a quick spin (less than 5000xg) to concentrate the liquid at the bottom.
5. Store the suspended plasmid at -20°C. The DNA is stable for at least one year from date of shipping when stored at -20°C.

RefSeq: [NM_032427.4](#)

RefSeq Size: 5428 bp

RefSeq ORF: 3471 bp

Locus ID: 84441

UniProt ID: [Q8IZL2](#)

Cytogenetics: 11q21

Protein Families: Druggable Genome, Transcription Factors

Protein Pathways: Notch signaling pathway

Gene Summary: The protein encoded by this gene is a member of the Mastermind-like family of proteins. All family members are proline and glutamine-rich, and contain a conserved basic domain that binds the ankyrin repeat domain of the intracellular domain of the Notch receptors (ICN1-4) in their N-terminus, and a transcriptional activation domain in their C-terminus. This protein binds to an extended groove that is formed by the interaction of CBF1, Suppressor of Hairless, LAG-1 (CSL) with ICN, and positively regulates Notch signaling. High levels of expression of this gene have been observed in several B cell-derived lymphomas. Translocations resulting in fusion proteins with both CRTC1 and CRTC3 have been implicated in the development of mucoepidermoid carcinomas, while a translocation event with CXCR4 has been linked with chronic lymphocytic leukemia (CLL). Copy number variation in the polyglutamine tract has been observed. [provided by RefSeq, Jan 2015]