

Product datasheet for **RG222076**

LAMC2 (NM_005562) Human Tagged ORF Clone

Product data:

Product Type:	Expression Plasmids
Product Name:	LAMC2 (NM_005562) Human Tagged ORF Clone
Tag:	TurboGFP
Symbol:	LAMC2
Synonyms:	B2T; BM600; CSF; EBR2; EBR2A; LAMB2T; LAMNB2
Mammalian Cell Selection:	Neomycin
Vector:	pCMV6-AC-GFP (PS100010)
E. coli Selection:	Ampicillin (100 ug/mL)
ORF Nucleotide Sequence:	>RG222076 representing NM_005562 Red=Cloning site Blue=ORF Green=Tags(s)

TTTTGTAATACGACTCACTATAGGGCGGCCGGAATTCGTCGACTGGATCCGGTACCGAGGAGATCTGCC
GCC**CGATCGCC**

ATGCTGCGCTCTGGCTGGGCTGCTGCCTCTGCTTCTCGCTCCTCTGCCCGCAGCCGGGCCACCTCCA
GGAGGGAAGTCTGTGATTGCAATGGGAAGTCCAGGCAGTGTATCTTTGATCGGAACTTCACAGACAAAC
TGTAATGGATCCGCTGCCTCACTGCAATGACAACACTGATGGCATTCACTGCGAGAAGTGAAGAAT
GGCTTTACCGGCACAGAGAAAGGGACCGCTGTTGCCCTGCAATTGTAACCTCAAAGGTTCTCTTAGTG
CTCGATGTGACAACCTCTGGACGGTGCAGCTGTAACCAGGTGTGACAGGAGCCAGATGCGACCGATGCT
GCCAGGCTCCACATGCTCACGGATGCGGGGTGCACCCAAGACCAGAGACTGCTAGACTCCAAGTGTGAC
TGTGACCCAGCTGGCATCGCAGGGCCCTGTGACCGGGCCGCTGTGTCTGCAAGCCAGCTGTTACTGGAG
AACGCTGTGATAGGTGTGATCAGGTTACTATAATCTGGATGGGGGAACCCCTGAGGGCTGTACCCAGTG
TTTCTGCTATGGGCATTAGCCAGCTGCCCGAGCTCTGCAGAATACAGTGTCCATAAGATCACCTCTACC
TTTCATCAAGATGTTGATGGCTGGAAGGCTGTCCAACGAAATGGGTCTCTGCAAAGCTCCAATGGTCAC
AGCGCCATCAAGATGTGTTAGCTCAGCCCAACGACTAGACCTGTCTATTTGTGGCTCCTGCCAATT
TCTTGGGAATCAACAGGTGAGCTATGGGCAAAGCTGTCTTTGACTACCGTGTGGACAGAGGAGGCAGA
CACCCATCTGCCCATGATGTGATTTGGAAGGTGCTGGTCTACGGATCACAGCTCCCTTGATGCCACTTG
GCAAGACACTGCCTTGTGGGCTCACCAAGACTTACACATTCAGGTTAAATGAGCATCCAAGCAATAATTG
GAGCCCCAGCTGAGTTACTTTGAGTATCGAAGGTTACTGCGGAATCTCACAGCCCTCCGCATCCGAGCT
ACATATGGAGAATACAGTACTGGGTACATTGACAAATGTGACCCTGATTTAGCCCGCCCTGTCTCTGGAG
CCCCAGCACCCCTGGGTTGAACAGTGTATATGTCCTGTTGGGTACAAGGGGCAATTCTGCCAGGATTGTGC
TTCTGGCTACAAGAGAGATTGAGGAGACTGGGGCCTTTTGGCACCTGTATTCTTGTAACTGTCAAGGG
GGAGGGGCTGTGATCCAGACACAGGAGATTGTTATTCAGGGGATGAGAATCCTGACATTGAGTGTGCTG
ACTGCCAATTGGTTTCTACAACGATCCGCACGACCCCGCAGCTGCAAGCCATGTCCTGTGATAACGG
GTTGAGCTGCTCAGTGTGCCGGAGACGGAGGAGTGGTGTGCAATAACTGCCCTCCCGGGTACCAGGT



[View online »](#)

GCCCCGTGTGAGCTCTGTGCTGATGGCTACTTTGGGGACCCCTTTGGTGAACATGGCCCAGTGAGGCCTT
GTCAGCCCTGTCAATGCAACAACAATGTGGACCCAGTGCCTCTGGGAATTGTGACCCGGCTGACAGGCAG
GTGTTTGAAGTGTATCCACAACACAGCCGGCATCTACTGCGACCAGTGCAAAGCAGGCTACTTCGGGGAC
CCATTGGCTCCCAACCCAGCAGACAAGTGTGAGCTTGAACCTGTAACCCCATGGGCTCAGAGCCTGTAG
GATGTCGAAGTGTGACACCTGTGTTTGAAGCCAGGATTTGGTGGCCCCAACTGTGAGCATGGAGCATT
CAGCTGTCCAGCTTGCTATAATCAAGTGAAGATTCAGATGGATCAGTATTATGCAGCAGTTTCAGAGAATG
GAGGCCCTGATTTCAAAGGCTCAGGGTGGTGTGAGGAGTACCTGATACAGAGCTGGAAGGCAGGATGC
AGCAGGCTGAGCAGGCCCTTCAGGACATTCTGAGAGATGCCAGATTTTCAGAAGGTGCTAGCAGATCCCT
TGGTCTCCAGTTGGCCAAGGTGAGGAGCCAAGAGAACAGCTACCAGAGCCGCCTGGATGACCTCAAGATG
ACTGTGAAAAGAGTTCGGGCTCTGGGAAGTCAGTACCAGAACCGAGTTCGGGATACTCACAGGCTCATCA
CTCAGATGCAGCTGAGCCTGGCAGAAAAGTGAAGCTTCTTGGGAAACACTAACATTCTGCCTCAGACCA
CTACGTGGGGCCAAATGGCTTTAAAAGTCTGGCTCAGGAGGCCACAAGATTAGCAGAAAAGCCACGTTGAG
TCAGCCAGTAACATGGAGCAACTGACAAGGAAACTGAGGACTATTCAAACAAGCCCTCTACTGGTGC
GCAAGGCCCTGCATGAAGGAGTCGGAAGCGGAAGCGGTAGCCCGACGGTGTGTGGTCAAGGGCTTGT
GGAAAAATGGAGAAAACCAAGTCCCTGGCCAGCAGTTGACAAGGGAGGCCACTCAAGCGAAAATTGAA
GCAGATAGGTCTTATCAGCACAGTCTCCGCCTCTGGATTCAAGTGTCTCGGCTTCAGGGAGTCAGTGATC
AGTCTTTTCAGGTGGAAGAAGCAAGAGGATCAAACAAAAAGCGGATTAAGTCTCAACGCTGGTAACACG
GCATATGGATGAGTTCAAGCGTACACAAAAGAATCTGGGAAACTGGAAAGAAGAAGCACAGCAGCTCTTA
CAGAATGGAAAAGTGGGAGAGAGAAAATCAGATCAGCTGCTTCCCGTGCCAATCTTGCTAAAAGCAGAG
CACAAGAAGCACTGAGTATGGGCAATGCCACTTTTTATGAAGTTGAGAGCATCCTTAAAAACCTCAGAGA
GTTTGACCTGCAGGTGGACAACAGAAAAGCAGAAGCTGAAGAAGCCATGAAGAGACTCTCCTACATCAGC
CAGAAGGTTTCAGATGCCAGTGAACAAGACCCAGCAAGCAGAAAAGAGCCCTGGGGAGCGCTGCTGCTGATG
CACAGAGGGCAAAGAATGGGGCCGGGAGGCCCTGGAAATCTCCAGTGAAGTGAACAGGAGATTGGGGAG
TCTGAACCTTGGAAAGCCAATGTGACAGCAGATGGAGCCTTGGCCATGGAAAAGGGACTGGCCTCTCTGAAG
AGTGAGATGAGGGAAGTGAAGGAGAGCTGGAAGGAAGGAGCTGGAGTTTGACACGAATATGGATGCAG
TACAGATGGTATTACAGAAGCCAGAAGGTTGATACCAGAGCCAAGAAGCTGGGGTTACAATCCAAGA
CACACTCAACACATTAGACGGCCTCTGCATCTGATGGACCAGCCTCTCAGTGTAGATGAAGAGGGGCTG
GTCTTACTGGAGCAGAAGCTTCCCGAGCCAAGACCCAGATCAACAGCCAAGTGCAGCCCATGATGTCAG
AGCTGGAAGAGAGGGCACGTGAGCAGAGGGGCCACCTCCATTTGCTGGAGACAAGCATAGATGGGATTCT
GGCTGATGTGAAGAACTTGGAGAACATTAGGGACAACCTGCCCCAGGCTGCTACAATACCCAGGCTCTT
GAGCAACAG

ACGCGTACGCGGCCGCTCGAG – GFP Tag – GTTTAA

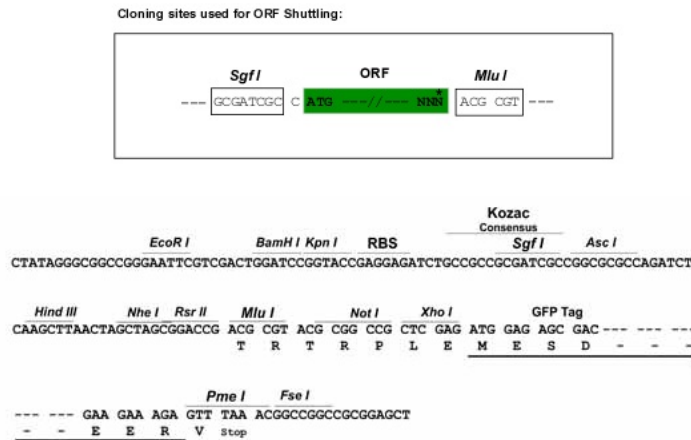
Protein Sequence: >RG222076 representing NM_005562
 Red=Cloning site Green=Tags(s)

MPALWLGCCLCFSLLLPAARATSRREVDCNGKSRQCIFDRELHRQTGNFRCLNCNDNTDGIHCEKCKN
 GFYRHRERDRCLPCNCNSKGSLSARCDNSGRCSCKPGVTGARCDRCLPGFHMLTDAGCTQDQRLDLSKCD
 CDPAGIAGPCDAGRCVCKPAVTGERCDRCRSGYVNLDDGGNPEGCTQCFCYGHASACRSSAEYSVHKITST
 FHQDVGWKAQVQNGSPAKLQWSQRHQDVFSQAQRLDPVYFVAPAKFLGNQVSYGQSLSFYRVRDRGGR
 HPSAHDVILEGAGLRITAPLMPLGKTLPCGLTKTYTFRLNEHPSNNWSPQLSYFEYRRLRLNLTLRIRA
 TYGEYSTGYIDNVTLISARPVSGAPAPWVEQCICPVGYKGQFCQDCASGYKRDSARLGPFGTCIPCNQCG
 GGACDPDGTDCYSGDENPDIECADCPIGFYNDPHDPRSCPCPCHNGFSCSVMPEEVEVNCNPPGVTG
 ARCELCADGYFGDPFGEHGPVPCPCQCNNDVPSASGNCDRLTGRCLKCIHNTAGIYCDQCKAGYFGD
 PLAPNPADKCRACNCNPMGSEPVGCRSDGTCVCKPGFGPNCEHGAFSCPACYNQVKIQMDQFMQQLQRM
 EALISKAQGGDGVVPDTELEGRMQAEQALQDILRDAQISEGASRSLGLQLAKVRSQENSYSRLDDLKML
 TVERVRLGSQYQNRVDRTHRLITQMQLSLAESEASLGNTNIPASDHVYGPNGFKSLAQEATRLAESHVE
 SASNMEQLTRETEDYSKQALSLVRKALHEGVGSGSGSPDGAVVQGLVEKLEKTKSLAQQLTREATQAEIE
 ADRSYQHSRLRLDVSRLQGVSDQSFQVEEAKRIKQKADSLSTLVTRHMDEFKRTQKNLGNWKEEAQQLL
 QNGKSGREKSDQLLSTRANLAKSRAQEALSMGNATFYEVEISILKNLREFDLQVDNRKAEAEAMKRLSYIS
 QKYSDASDKTQQAERALGSAAADAQRAKNGAGEALEISSEIEQEIIGSLNLEANVTADGALAMEKGLASLK
 SEMREVEGELERKELEFDTNMDAVQMVITEAQKVDTRAKNAGVTIQDTLNTLDGLLHLMQPLSVDEEGL
 VLLEQKLSRAKTQINSQLRPMMSLEERARQQRGHLHLETSIDGILADVKNLENIRDNLPPGCVNTQAL
 EQQ

TRTRPLE - GFP Tag - V

Restriction Sites: SgfI-MluI

Cloning Scheme:



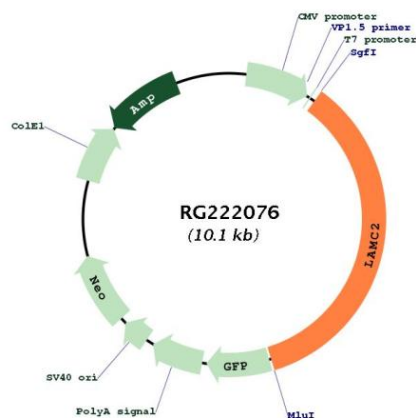
ACCN: NM_005562

ORF Size: 3579 bp

OTI Disclaimer:	The molecular sequence of this clone aligns with the gene accession number as a point of reference only. However, individual transcript sequences of the same gene can differ through naturally occurring variations (e.g. polymorphisms), each with its own valid existence. This clone is substantially in agreement with the reference, but a complete review of all prevailing variants is recommended prior to use. More info
OTI Annotation:	This clone was engineered to express the complete ORF with an expression tag. Expression varies depending on the nature of the gene.
Components:	The ORF clone is ion-exchange column purified and shipped in a 2D barcoded Matrix tube containing 10ug of transfection-ready, dried plasmid DNA (reconstitute with 100 ul of water).
Reconstitution Method:	<ol style="list-style-type: none">1. Centrifuge at 5,000xg for 5min.2. Carefully open the tube and add 100ul of sterile water to dissolve the DNA.3. Close the tube and incubate for 10 minutes at room temperature.4. Briefly vortex the tube and then do a quick spin (less than 5000xg) to concentrate the liquid at the bottom.5. Store the suspended plasmid at -20°C. The DNA is stable for at least one year from date of shipping when stored at -20°C.
RefSeq:	NM_005562.1 , NP_005553.1
RefSeq Size:	5175 bp
RefSeq ORF:	3582 bp
Locus ID:	3918
UniProt ID:	Q13753
Cytogenetics:	1q25.3
Domains:	LamB, EGF_Lam
Protein Families:	Druggable Genome, Secreted Protein
Protein Pathways:	ECM-receptor interaction, Focal adhesion, Pathways in cancer, Small cell lung cancer

Gene Summary:

Laminins, a family of extracellular matrix glycoproteins, are the major noncollagenous constituent of basement membranes. They have been implicated in a wide variety of biological processes including cell adhesion, differentiation, migration, signaling, neurite outgrowth and metastasis. Laminins, composed of 3 non identical chains: laminin alpha, beta and gamma (formerly A, B1, and B2, respectively), have a cruciform structure consisting of 3 short arms, each formed by a different chain, and a long arm composed of all 3 chains. Each laminin chain is a multidomain protein encoded by a distinct gene. Several isoforms of each chain have been described. Different alpha, beta and gamma chain isomers combine to give rise to different heterotrimeric laminin isoforms which are designated by Arabic numerals in the order of their discovery, i.e. alpha1beta1gamma1 heterotrimer is laminin 1. The biological functions of the different chains and trimer molecules are largely unknown, but some of the chains have been shown to differ with respect to their tissue distribution, presumably reflecting diverse functions in vivo. This gene encodes the gamma chain isoform laminin, gamma 2. The gamma 2 chain, formerly thought to be a truncated version of beta chain (B2t), is highly homologous to the gamma 1 chain; however, it lacks domain VI, and domains V, IV and III are shorter. It is expressed in several fetal tissues but differently from gamma 1, and is specifically localized to epithelial cells in skin, lung and kidney. The gamma 2 chain together with alpha 3 and beta 3 chains constitute laminin 5 (earlier known as kalinin), which is an integral part of the anchoring filaments that connect epithelial cells to the underlying basement membrane. The epithelium-specific expression of the gamma 2 chain implied its role as an epithelium attachment molecule, and mutations in this gene have been associated with junctional epidermolysis bullosa, a skin disease characterized by blisters due to disruption of the epidermal-dermal junction. Two transcript variants resulting from alternative splicing of the 3' terminal exon, and encoding different isoforms of gamma 2 chain, have been described. The two variants are differentially expressed in embryonic tissues, however, the biological significance of the two forms is not known. Transcript variants utilizing alternative polyA_signal have also been noted in literature. [provided by RefSeq, Aug 2011]

Product images:

Circular map for RG222076

