

Product datasheet for **RG222056**

PIB5PA (INPP5J) (NM_001002837) Human Tagged ORF Clone

Product data:

Product Type:	Expression Plasmids
Product Name:	PIB5PA (INPP5J) (NM_001002837) Human Tagged ORF Clone
Tag:	TurboGFP
Symbol:	INPP5J
Synonyms:	INPP5; PIB5PA; PIPP
Mammalian Cell Selection:	Neomycin
Vector:	pCMV6-AC-GFP (PS100010)
E. coli Selection:	Ampicillin (100 ug/mL)



[View online »](#)

ORF Nucleotide Sequence:

>RG222056 representing NM_001002837
 Red=Cloning site Blue=ORF Green=Tags(s)

TTTTGTAATACGACTCACTATAGGGCGGCCGGGAATTCGTCGACTGGATCCGGTACCGAGGAGATCTGCC
 GCC**CGCATCGCC**

ATGGAGGGCCAGAGCAGCAGGGGCAGCAGGAGCCAGGGACCCGGGCTGGCCTGGGTTCCCTGCCATGC
 CCCAGGGTGTGCCAAACTGGGGCACCTCCAAGGTGGACTCAAGTTTTAGCTCCAGCAAAGAAGAA
 CGCAGCCCTAGGACCCTCGGAACCAAGGATCACTGTGGTACATGGAACGTGGGCACTGCCATGCCCCCA
 GACGATGTACATCCCTCCTCCACTGGGCGGTGGTGACGACAGCGACGGCGCAGACATGATCGCCATAG
 GGTTGCAGGAAGTGAATCCATGCTCAACAAGCGACTCAAGGACGCCCTTTCACGGACCAGTGGAGTGA
 GCTGTTTACATGGATGCGCTAGGGCCCTTCAACTTCGTGCTGGTGGTGGTTCGGTGAGGATGCAGGGTGCATC
 CTGCTGCTGTTCCCAAGTACTACCACCTGCCCTTCTGCGAGACGTGCAGACCGACTGCACGGCAGCTG
 GCCTGGGCGGCTACTGGGTAACAAGGGTGGCGTGAGCGTGCCTGGCGGCTTCGGGCACATGCTCTG
 CTTCTGAATGCCACTGCCTGCGCATATGGACAAGGCGGAGCAGCGCAAAGACAACCTCCAGACCATC
 CTAGCCTCCAGCAGTCCAAGGGCCGGGCGCACAGGGCATCCTGGATCATGACCTCGTGTCTGGTTCCG
 GGGACCTGAACCTCCGCATTGAGAGCTATGACCTGCACCTTGTCAAGTTTGCATCGACAGTGACCAGCT
 CCATCAGCTCTGGGAGAAGGACCAGCTCAACATGGCCAAGAACACCTGGCCCATCTGAAGGGCTTTCAG
 GAGGGGCCCTCAACTTCGCTCCACCTCAAGTTTGTGTGGTACCAACAAATACGATACCAGTGCCA
 AGAAACGGAAGCCAGCTTGACAGACCGTATCCTATGGAAGTCAAGGCTCCAGGTGGGGTCCCAGCCC
 CTCAGGACGGAAGAGCCACCGACTCCAGGTGACGACGACAGCTACCGCAGCCACATGGAATACACAGTC
 AGCGACCACAAGCCTGTGGTGGCCAGTTCCTCCTGCAGTTTGCCTTCAGGGACGACATGCCACTGGTGC
 GGCTGGAGGTGGCAGATGAGTGGTGGCGCCGAGCAGGCGGTGGTGGTACCGCATGGAAACAGTGTT
 CGCCCGCAGTCTGGGACTGGATCGGCTTATACCGGGTGGGTTCCGCCATTGCAAGGACTATGTGGCT
 TATGTCTGGGCCAAACATGAAGATGTGGATGGGAATACCTACCAGGTAACATTCAGTGAGGAATCACTGC
 CCAAGGGCCATGGAGACTTATCCTGGGCTACTATAGTACAACCACAGCATCCTCATCGGCATCACTGA
 ACCCTTCCAGATCTCGCTGCCTTCTCGGAGTTGGCCAGCAGCAGCAGACAGCTCAGGACCAGCTCA
 GAGGGAGAGGATGACAGCACACTGGAGCTCCTTGACCCAAAGTCCCGCAGCCCCAGTCTGGCAAGTCCA
 AGCGACACCGCAGCCGACGCCGGGACTGGCCAGGTTCCCTGGGCTTGCCTACGGCCCTCATCCCGTGA
 ACGCCGTGGTGCAGCCGTAGCCCTCACCCAGAGCCGCGCCTGTCCCGAGTGGCTCCTGACAGGAGC
 AGTAATGGCAGCAGCCGGGCGAGTGTGAAGAGGGGCCCTCTGGGTTGCCTGGCCCTGGGCTTCCCAC
 CAGCTGTGCCTCGAAGCCTGGGCTGTTGCCCGCCTTGCCTTAGAGACTGTAGACCCTGGTGGTGGTGG
 CTCTGGGGACCTGATCGGGAGGCCCTGGCGCCAACAGCCTGTCTCTAGTCCCGAGGGCCATCGGGGG
 CTGGAGGAAGGGGCTGGGGCC

ACGCGTACGCGGGCCGCTCGAG - GFP Tag - GTTTAA

Protein Sequence:

>RG222056 representing NM_001002837
 Red=Cloning site Green=Tags(s)

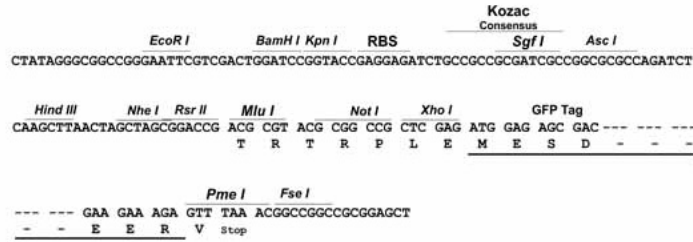
MEGQSSRGSRRPGTRAGLGLPMPQVAQTGAPSKVDSSFLPAKKNAALGPSEPRITVVTWNVGTAMP
 DDVTSLLHLGGDDSDGADMIAGLQEVNSMLNKRLKDALFTDQWSELFMDALGPFNFVLVSSVRMQGVI
 LLLFAKYHYLPFLRDVQTDCTRTGLGGYWGNKGGVSVRLAAFHMLCFLNCHLPAHMDKAEQRKDNFQTI
 LSLQQFQPGAQILDHDLVFWFGDLNFRIESYDLHFVKFAIDSDQLHQLWEKDQLNMAKNTWPILKGFQ
 EGPLNFAPTFKFDVGTNKYDTSAKKRKPAWTDRIWVKVAPGGPSPSGRKSRLQVTHSYRSHMEYTV
 SDHKPVAQAQFLQFAFRDMPLVRLEVADEWVRPEQAVVRYRMETVFASSWDWIGLYRVGFRHCKDYVA
 YWAKHEDVDGNTYQVTFSEESLPKGGHDFILGYSHNHSILIGITEPFQISLPSSELASSTSDSSGTS
 EGEDDSTLELLAPKSRSPSPGKSKRHRSRPGLARFPGLALRPSRERRGASRSPSPQSRRLSRVAPDRS
 SNGSSRGSSEEGPSGLPGWAFPPAVPRSLGLLPALRLETVDPPGGGSGWGPDREALAPNSLSPSPQGH
 LEEGGLGP

TRTRPLE - GFP Tag - V

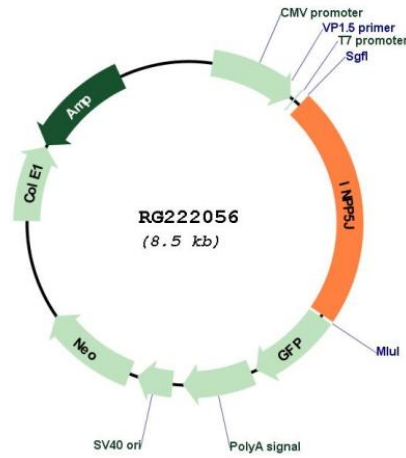
Restriction Sites: SgfI-MluI

Cloning Scheme:

Cloning sites used for ORF Shutting:



Plasmid Map:



ACCN: NM_001002837

ORF Size: 1914 bp

OTI Disclaimer:	The molecular sequence of this clone aligns with the gene accession number as a point of reference only. However, individual transcript sequences of the same gene can differ through naturally occurring variations (e.g. polymorphisms), each with its own valid existence. This clone is substantially in agreement with the reference, but a complete review of all prevailing variants is recommended prior to use. More info
OTI Annotation:	This clone was engineered to express the complete ORF with an expression tag. Expression varies depending on the nature of the gene.
Components:	The ORF clone is ion-exchange column purified and shipped in a 2D barcoded Matrix tube containing 10ug of transfection-ready, dried plasmid DNA (reconstitute with 100 ul of water).
Reconstitution Method:	<ol style="list-style-type: none"> 1. Centrifuge at 5,000xg for 5min. 2. Carefully open the tube and add 100ul of sterile water to dissolve the DNA. 3. Close the tube and incubate for 10 minutes at room temperature. 4. Briefly vortex the tube and then do a quick spin (less than 5000xg) to concentrate the liquid at the bottom. 5. Store the suspended plasmid at -20°C. The DNA is stable for at least one year from date of shipping when stored at -20°C.
RefSeq:	NM_001002837.2 , NP_001002837.1
RefSeq Size:	2238 bp
RefSeq ORF:	1917 bp
Locus ID:	27124
UniProt ID:	Q15735
Cytogenetics:	22q12.2
Protein Families:	Druggable Genome
Protein Pathways:	Inositol phosphate metabolism, Metabolic pathways, Phosphatidylinositol signaling system
Gene Summary:	Inositol 5-phosphatase, which converts inositol 1,4,5-trisphosphate to inositol 1,4-bisphosphate. Also converts phosphatidylinositol 4,5-bisphosphate to phosphatidylinositol 4-phosphate and inositol 1,3,4,5-tetrakisphosphate to inositol 1,3,4-trisphosphate in vitro. May be involved in modulation of the function of inositol and phosphatidylinositol polyphosphate-binding proteins that are present at membranes ruffles (By similarity).[UniProtKB/Swiss-Prot Function]