

## Product datasheet for **RG222049**

### ADAMTS13 (NM\_139026) Human Tagged ORF Clone

#### Product data:

Product Type:	Expression Plasmids
Product Name:	ADAMTS13 (NM_139026) Human Tagged ORF Clone
Tag:	TurboGFP
Symbol:	ADAMTS13
Synonyms:	ADAM-TS13; ADAMTS-13; C9orf8; vWF-CP; VWFCP
Mammalian Cell Selection:	Neomycin
Vector:	pCMV6-AC-GFP (PS100010)
E. coli Selection:	Ampicillin (100 ug/mL)
ORF Nucleotide Sequence:	>RG222049 representing NM_139026 Red=Cloning site Blue=ORF Green=Tags(s)

TTTTGTAATACGACTCACTATAGGGCGGCCGGAATTCGTCGACTGGATCCGGTACCGAGGAGATCTGCC  
GCC**CGATCGCC**

ATGCACCAGCGTCACCCCGGGCAAGATGCCCTCCCCTCTGTGTGGCCGGAATCCTTGCCTGTGGCTTTC  
TCCTGGGCTGCTGGGACCCTCCCATTTCCAGCAGAGTTGTCTTCAGGCTTTGGAGCCACAGGCCGTGTC  
TTCTTACTTGAGCCCTGGTGTCCCTTAAAGGCCGCCCTCCTCCCCTGGCTTCCAGAGCCAGAGGCAG  
AGGCAGAGGCGGGCTGCAGGCGGCATCCTACACCTGGAGCTGCTGGTGGCCGTGGGCCCGATGTCTTCC  
AGGCTCACAGGAGGACACAGAGCGCTATGTGCTCACCAACCTCAACATCGGGGAGAACCTGCTTCGGGA  
CCCGTCCCCTGGGGCTCAGTTTCGGGTGCACCTGGTGAAGATGGTCATTCTGACAGAGCCTGAGGGTGC  
CCAAATATCACAGCCAACCTCACCTCGTCCCTGCTGAGCGTCTGTGGGTGGAGCCAGACCATCAACCCTG  
AGGACGACACGGATCCTGGCCATGCTGACCTGGTCCCTCTATATCACTAGGTTTGACCTGGAGTTGCCTGA  
TGGTAACCGGCAGGTGCGGGGCGTCACCCAGCTGGGCGGTGCCTGCTCCCCAACCTGGAGCTGCCTCATT  
ACCGAGGACACTGGCTTCGACCTGGGAGTACCATTGCCCATGAGATTGGGACAGCTTCGGCCTGGAGC  
ACGACGGCGGCCCGGCAGCGGCTGCGGCCAGCGGACAGTATGGCTTCGGACGGCGCCGCGCCCGC  
CGCCGGCTCGCTGGTCCCCGTCAGCCGCGGACGCTGCTGAGCCTGCTCAGCGCCAACGAGCAGTGC  
CGCGTGGCTTCGGCCCCAAGGCTGTCGCTGCACCTTCGCCAGGAGCACCTGGATATGTGCCAGGCC  
TCTCCTGCCACACAGACCCGCTGGACCAAGCAGCTGCAGCCGCTCCTCGTTCCCTCCTGGATGGGAC  
AGAATGTGGCGTGGAGAAGTGGTCTCCAAGGGTCTGCTGCCGCTCCCTGGTGGAGCTGACCCCATAGCA  
GCAGTGCATGGGCGTGGTCTAGCTGGGTCGCCGAAGTCTTGTCTCCGCTCCTGCGGAGGAGGTGTGG  
TCACCAGGAGGCGGAGTGAACAACCCAGACCTGCCTTTGGGGGCGTGCATGTGTTGGTGTGACCT  
CCAGGCCGAGATGTGCAACTCAGGCCTGCGAGAAGACCCAGCTGGAGTTCATGTCGCAACAGTGCGCC  
AGGACCGACGGCCAGCCGCTGCGCTCCTCCCCTGGCGGCCCTCCTTCTACCACTGGGGTGTGCTGTAC  
CACACAGCCAAGGGGATGCTCTGTGAGACACATGTGCCGGCCATTGGCGAGAGCTTCATCATGAAGCG  
TGGAGACAGCTTCTCGATGGGACCCGGTGTATGCCAAGTGGCCCCGGGAGGACGGACCTGAGCCTG



[View online »](#)

TGTGTGTCGGGCAGCTGCAGGACATTTGGCTGTGATGGTAGGATGGACTCCCAGCAGGTATGGGACAGGT  
GCCAGGTGTGGTGGGACAACAGCACGTGCAGCCCACGGAAGGGCTCTTTCACAGCTGGCAGAGCGAG  
AGAATATGTACATTTCTGACAGTTACCCCAACCTGACCAGTGTCTACATTGCCAACACAGGCCCTCTC  
TTCACACACTTGGCGGTGAGGATCGGAGGGCGCTATGTCGTGGCTGGGAAGATGAGCATCTCCCCTAAC  
CCACCTACCCCTCCCTCCTGGAGGATGGTCGTGTGAGTACAGAGTGGCCCTCACCGAGGACCGGCTGCC  
CCGCTGGAGGAGATCCGCATCTGGGACCCCTCCAGGAAGATGCTGACATCCAGGTTTACAGGCGGTAT  
GGCGAGGAGTATGGCAACCTCACCCGCCAGACATCACCTTACCTACTCCAGCCTAAGCCACGCGCAGG  
CCTGGGTGTGGCCGCTGTGCGTGGGCCCTGCTCGGTGAGCTGTGGGGCAGGGCTGCGCTGGGTAACTA  
CAGCTGCCTGGACCAGGCCAGGAAGGAGTTGGTGGAGACTGTCCAGTGCCAAGGGAGCCAGCAGCCACCA  
GCGTGGCCAGAGGCTGCGTGTGCAACCTGCCCTCCCTACTGGGCGGTGGGAGACTTCGGCCCATGCA  
GCGCTCTGTGGGGCGGCTGCGGGAGCGGCCAGTGCCTGCGTGGAGGCCAGGGCAGCCTCTGAA  
GACATTGCCCCAGCCCGGTGCAGAGCAGGGGCCAGCAGCCAGCTGTGGCGTGGAAACCTGCAACCCC  
CAGCCCTGCCCTGCCAGGTGGGAGGTGTCAGAGCCAGCTCATGCACATCAGCTGGTGGAGCAGGCTGG  
CCTTGGAGAACGAGACCTGTGTGCCAGGGCAGATGGCCTGGAGGCTCCAGTGACTGAGGGGCTGGCTC  
CGTAGATGAGAAGCTGCCTGCCCTGAGCCCTGTGTGCGGATGTCATGTCCTCCAGGCTGGGGCCATCTG  
GATGCCACCTCTGCAAGGGGAGAAGGCTCCCTCCCATGGGGCAGCATCAGGACGGGGCTCAAGTGCAC  
ACGTGTGGACCCCTGCGGCAGGGTCTGCTCCGTCTCCTGCGGGCGAGGTCTGATGGAGCTGCGTTTCT  
GTGCATGGACTCTGCCCTCAGGGTGCCTGTCCAGGAAGAGCTGTGTGGCCTGGCAAGCAAGCCTGGGAGC  
CGGCGGGAGGTCTGCCAGGCTGTCCCGTGCCTGCTCGGTGGCAGTACAAGCTGGCGGCCTGCAGCGTGA  
GCTGTGGGAGAGGGTCTGCGGAGGATCTGTATTGTGCCCGGGCCATGGGGAGGACGATGGTGGAGGA  
GATCCTGTTGGACACCCAGTGCAGGGGCTGCCTCGCCCGGAACCCAGGAGGCTGCAGCCTGGAGCCC  
TGCCACCTAGGTGAAAGTCAATGTCCTTGGCCATGTTGCGCCAGCTGTGGCCTTGGCACTGCTAGAC  
GCTCGGTGGCCTGTGTGCAGCTGCACCAAGGCCAGGACGTGGAGGTGGACGAGGGCCCTGTGCGGCGCT  
GGTGGCGCCCGAGGCCAGTGTCCCTGTCTCATTGCCGACTGCACCTACCCTGGCATGTTGGCACCTGG  
ATGGAGTGCTCTGTTTCTGTGGGGATGGCATCCAGCGCCGCGTGACACCTGCCTCGGACCCAGGCC  
AGGCGCCTGTGCCAGCTGATTTCTGCCAGCACTTGCCCAAGCCGGTACTGTGCGTGGTCTGGGCTGG  
GCCCTGTGTGGGACAGGGTGCCTGTGGCAGGCAGCACCTTGAGCCAACAGGAACCATTGACATGCGAGGC  
CCAGGGCAGGCAGACTGTGCAGTGGCCATTGGGCGGCCCTCGGGGAGGTGGTACCCTCCGCTCCTTG  
AGAGTTCTCTCAACTGCAGTGGGGGACATGTTGCTGCTTTGGGGCCGGCTCACCTGGAGGAAGATGTG  
CAGGAAGCTGTTGGACATGACTTTCAGCTCCAAGACCAACACGCTGGTGGTGGAGCAGCGCTGCGGGCGG  
CCAGGAGGTGGGGTGTGCTGCGGTATGGGAGCCAGCTTGTCTCCTGAAACCTTCTACAGAGAATGTGACA  
TGCACTCTTTGGGCCCTGGGGTAAATCGTGAGCCCCTCGCTGAGTCCAGCCACGAGTAATGCAGGGGG  
CTGCCGGCTTTCATTAATGTGGCTCCGCACGCACGGATTGCCATCCATGCCCTGGCCACCAACATGGGC  
GCTGGGACCGAGGGAGCCAATGCCAGCTACATCTTGATCCGGGACACCCACAGCTTGAGGACCACAGCGT  
TCCATGGGCAGCAGGTGCTCTACTGGGAGTCAAGAGCAGCCAGGCTGAGATGGAGTTACAGCAGGGGCT  
CCTGAAGGCTCAGGCCAGCCTGCGGGGCCAGTACTGGACCCTCCAATCATGGGTACCGGAGATGCAGGAC  
CCTCAGTCTGGAAGGAAAGGAAGGAACC

ACGCGTACGCGGCCGCTCGAG - GFP Tag - GTTTAA

**Protein Sequence:** >RG222049 representing NM\_139026  
 Red=Cloning site Green=Tags(s)

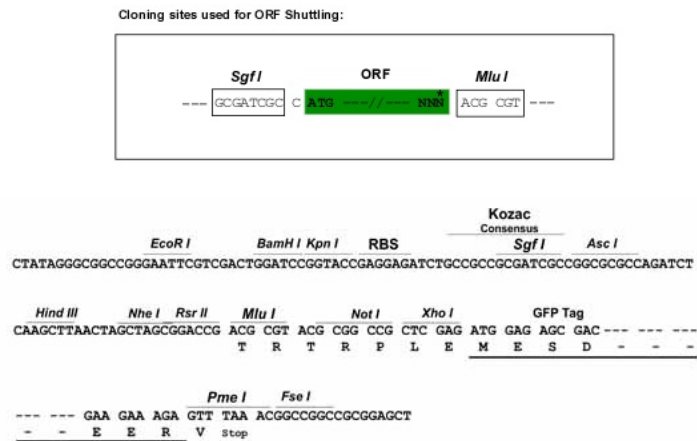
```
MHQRHPRARCPLCVAGILACGFLLGCWGPSHFQQSCLQALEPQAVSSYLSPGAPLKGRPPSPGFQRQRQ
RQRRRAAGGILHLELLVAVGPDVFQAHQEDTERYVLTNLNIGAELLRDPSLGAQFRVHLVKMVILTEPEGA
PNITANLTSLLSVCGWSQTINPEDDTPGHADLVLYITRFDLELPDGNRQVRGVTLGGACSPWISCLIT
TEDTGFDLGVTTIAHEIGHSFGLQEHGAPGSGCGPSGHVMASDGAAPRAGLAWSPCSRRQLLSLLSANEQC
RVAFGPKAVACTFAREHLDMCQALSCHTDPLDQSSCSRLLVPLLDGTECGVEKWCCKGRCSRSLVELTPIA
AVHGRWSSWGPRSPCSRSCGGGVVTRRRQCNNPRPAFGGRACVADLQAEMCNTQACEKTQLEFMSQQCA
RTDQQLRSPGGASFYHWGAAVPHSQGDALCRHMCRAIGESFIMKRGDSFLDGTRCMPSPGREGTGLSL
CVSGSCRTFGCDGRMDSQQVWDRQCVCVGGDNSTCSPRKGSFTAGRAREYVTFLLVTPNLTSVYIANHRPL
FTHLAVRIGGRYVAVGKMSISPNTTYPALLEDRVEYRVALTEDRLPRLEEIRIWGLQEDADIQVYRRY
GEEYGNLTRPDIIFTYFQPKPRQAWVWAAVRGPSCVSCGAGLRWVNYSCLDQARKELVETVQCQGSQPP
AWPEACVLEPCPPYAVGDFGPCSASCGGGLRERPVRCVEAQGSLLKTLPPARCRAGAQQPAVALETCPN
QPCPARWEVSEPSCTSAGGAGLALENETCVPGADGLEAPVTEGPGSVDEKLPAPEPCVGMSCPPGWGHL
DATSAGEKAPSPWGSIRTGAAAHVWTPAAGSCSVSCGRGLMELRFLCMDALRVPVQEELCGLASKPGS
RREVCQAVPCPARWQYKLAACSVSCGRGVVRRILYCARAHGEDDGEEILLDTQCQGLPRPEPQEACSLP
CPPRWKVMSLGPCSASCLGTARRSVACVQLDQGQDVEVDEAACAALVRPEASVPCLIADCTYRWHVGTW
MECSVSCGDGIQRRRDTCLGPQAQAPVPADFQHLKPKVTVRGCWAGPCVQGACGRQHLEPTGTIDMRG
PGQADCAVAIGRPLGEVVTLRVLESSLNCASGDMLLLWGRLTWRKMCRLKLLDMTFSSKNTLTVVRQRCGR
PGGGVLLRYGSQLAPETFYRECDMQLFGPWGEIVSPSLSPATSNAGGCRLFINVAPHARIAIHALATNMG
AGTEGANASYILIRDTHSLRTTAFHGQQVLYWESESSQAEMEFSEGFKAQASLRGQYWTLSQSWPEMQD
PQSWKKGEGT
```

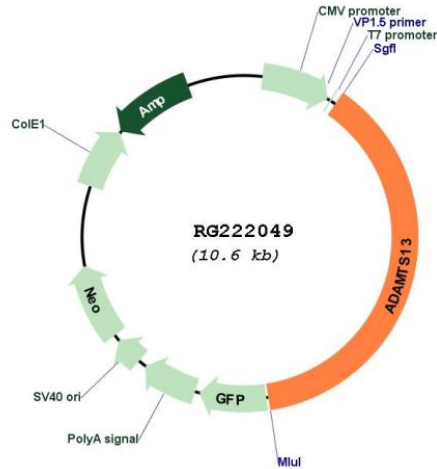
TRTRPLE - GFP Tag - V

**Restriction Sites:**

SgfI-MluI

**Cloning Scheme:**



**Plasmid Map:**


**ACCN:** NM\_139026

**ORF Size:** 4020 bp

**OTI Disclaimer:** The molecular sequence of this clone aligns with the gene accession number as a point of reference only. However, individual transcript sequences of the same gene can differ through naturally occurring variations (e.g. polymorphisms), each with its own valid existence. This clone is substantially in agreement with the reference, but a complete review of all prevailing variants is recommended prior to use. [More info](#)

**OTI Annotation:** This clone was engineered to express the complete ORF with an expression tag. Expression varies depending on the nature of the gene.

**Components:** The ORF clone is ion-exchange column purified and shipped in a 2D barcoded Matrix tube containing 10ug of transfection-ready, dried plasmid DNA (reconstitute with 100 ul of water).

**Reconstitution Method:**

1. Centrifuge at 5,000xg for 5min.
2. Carefully open the tube and add 100ul of sterile water to dissolve the DNA.
3. Close the tube and incubate for 10 minutes at room temperature.
4. Briefly vortex the tube and then do a quick spin (less than 5000xg) to concentrate the liquid at the bottom.
5. Store the suspended plasmid at -20°C. The DNA is stable for at least one year from date of shipping when stored at -20°C.

**RefSeq:** [NM\\_139026.3](#), [NP\\_620595.1](#)

**RefSeq Size:** 4680 bp

**RefSeq ORF:** 4023 bp

**Locus ID:** 11093

**UniProt ID:** [Q76LX8](#)

**Cytogenetics:** 9q34.2

**Protein Families:** Secreted Protein, Transmembrane

**Gene Summary:** This gene encodes a member of a family of proteins containing several distinct regions, including a metalloproteinase domain, a disintegrin-like domain, and a thrombospondin type 1 (TS) motif. The enzyme encoded by this gene specifically cleaves von Willebrand Factor (vWF). Defects in this gene are associated with thrombotic thrombocytopenic purpura. Alternative splicing results in multiple transcript variants. [provided by RefSeq, Jul 2013]