

Product datasheet for **RG222035**

SEMA3G (NM_020163) Human Tagged ORF Clone

Product data:

Product Type:	Expression Plasmids
Product Name:	SEMA3G (NM_020163) Human Tagged ORF Clone
Tag:	TurboGFP
Symbol:	SEMA3G
Synonyms:	sem2
Mammalian Cell Selection:	Neomycin
Vector:	pCMV6-AC-GFP (PS100010)
E. coli Selection:	Ampicillin (100 ug/mL)



[View online »](#)

ORF Nucleotide Sequence:

>RG222035 representing NM_020163
 Red=Cloning site Blue=ORF Green=Tags(s)

TTTTGTAATACGACTCACTATAGGGCGGCCGGAATTCGTCGACTGGATCCGGTACCGAGGAGATCTGCC
 GCC**CGGATCGCC**

ATGGCCCCCTCGCCTGGGCCATTTGCTGGCTGCTAGGGGCTCCTGCTCCATGGGGTAGCTCTGGCC
 CCAGCCCCGGCCCCAGTGTGCCCGCTGCGGCTCCTACCGAGACCTCCTGTCTGCCAACCGCTCTGC
 CATCTTTCTGGGCCCCAGGGCTCCCTGAACCTCCAGGCCATGTACCTAGATGAGTACCGAGACCGCCTC
 TTTCTGGGTGGCCTGGACGCCCTCTACTCTGCGGCTGGACCAGGCATGGCCAGATCCCGGGAGGTCC
 TGTGGCCACCGCAGCCAGGACAGAGGGAGGAGTGTGTTGAAAGGGAAGAGATCCTTTGACAGAGTGCGC
 CAACTTCGTGCGGGTCTACAGCCTCACAACCGGACCCACCTGCTAGCCTGTGGCACTGGGGCTTCCAG
 CCCACCTGTGCCCTCATCACAGTTGGCCACCGTGGGGAGCATGTGCTCCACCTGGAGCCTGGCAGTGTGG
 AAAGTGGCCGGGGCGGTGCCCTCAGAGCCAGCCGTCCTTTGCCAGCACCTCATAGACGGGGAGCT
 GTACACGGGTCTCACTGTGACTTCTGGGGCAGAGGCCATGATCTTCCGAAGTGGAGGTCTCGGCCA
 GCTCTGCGTTCCGACTCTGACCAGAGTCTTTCACGACCCCGGTTTGTGATGGCCGCCGGATCCCTG
 AGAACTCTGACCAGGACAATGACAAGGTGACTTCTTCTTCTCGGAGACGGTCCCCTCGCCCGATGGTGG
 CTCGAACCATGTCACTGTGAGCCGCTGGGCCGCTGCGTGAATGATGCTGGGGGCCAGCGGGTGTCTG
 GTGAACAAATGGAGCACTTCTCAAGGCCAGGCTGGTCTGCTCGGTGCCGGCCCTGGTGGTGGCCGAGA
 CCCACTTTGACCAGCTAGAGGATGTGTTCTGCTGTGGCCCAAGGCCGGGAAGAGCCTCGAGGTGTACGC
 GCTGTTACGACCGTCACTGCGGTGTTCCAGGGCTTCGCCGTCTGTGTGTACCACATGGCAGACATCTGG
 GAGGTTTTCAACGGGCCCTTTGCCACCGAGATGGGCTCAGCACCAGTGGGGCCCTATGGGGCAAGG
 TGCCCTCCCTCGCCCTGGCGTGTGCCCAGCAAGATGACCGCACAGCCAGGACGGCCTTTTGGCAGCAC
 CAAGGACTACCCAGATGAGGTGCTGCAAGTTTCCCGAGCCACCCCTCATGTTCTGGCCTGTGCGGCCCT
 CGACATGGCCGCCCTGTCTTGTCAAGACCCACCTGGCCAGCAGCTACACCAGATCGTGGTGGACCGCG
 TGGAGGCAGAGGATGGGACCTACGATGTCAATTTCTGGGGACTGACTCAGGGTCTGTGCTCAAAGTCAT
 CGCTCTCCAGGCAGGGGGCTCAGCTGAACCTGAGGAAGTGGTCTGGAGGAGCTCCAGGTGTTAAGGTG
 CCAACACCTATCACCGAAATGGAGATCTCTGTCAAAGGCAAATGCTATACGTGGGCTCTCGGCTGGGTG
 TGGCCAGCTGCGGCTGCACCAATGTGAGACTTACGGCACTGCCTGTGCAGAGTGTGCTGGCCCGGA
 CCCATACTGTGCCTGGGATGGTGCCTCCTGTACCCACTACCGCCAGCCTTGGCAAGCGCCGTTCCGC
 CGGCAGGACATCCGGCACGGCAACCCTGCCCTGCAGTGCCTGGCCAGAGCCAGGAAGAAGAGGCAGTGG
 GACTTGTGGCAGCCACCATGGTCTACGGCACGGAGCACAATAGCACCTTCTGGAGTGCCTGCCCAAGTC
 TCCCCAGGCTGTGTGCGCTGGCTCTTGCAGAGGCCAGGGGATGAGGGGCTGACCAGGTGAAGACGGAC
 GAGCGAGTCTTGACACGGAGCGGGGGCTGCTGTTCCGACGGCTTAGCCGTTTCGATGCGGGCACCTACA
 CCTGCACCACTCTGGAGCATGGCTTCTCCAGACTGTGGTCCGCCTGGCTCTGGTGGTGATTGTGGCCTC
 ACAGCTGGACAACCTGTTCCCTCCGAGCCAAAGCCAGAGGAGCCCCAGCCCGGGGAGGCTGGCTTCC
 ACCCCACCAAGGCTGGTACAAGGACATCCTGCAGCTCATTGGCTTCGCCAACCTGCCCGGGTGGATG
 AGTACTGTGAGCGCGTGTGGTGCAGGGGACACGGAAATGCTCAGGCTGCTTCCGAGCCGGAGCCGGGG
 CAAGCAGGCCAGGGCAAGAGCTGGGCAGGGCTGGAGCTAGGCAAGAAGATGAAGAGCCGGGTGCATGCC
 GAGCACAATCGGACGCCCGGGAGGTGGAGGCCACG

ACGCGTACGCGGCCGCTCGAG – GFP Tag – GTTTAA

Protein Sequence: >RG222035 representing NM_020163
 Red=Cloning site Green=Tags(s)

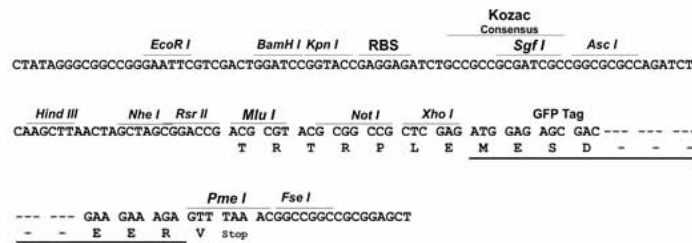
MAPSAWAICWLLGGLLLHGGSSGPGSPGSPVRLRLSYRDLLSANRSAIFLGPQGSNLQAMYLDEYRDRL
 FLGGLDALYSLRLDQAWDPREVLPWPQPGQREECVGRKGRDPLTECANFVRVLQPHNRTHLLACGTGAFQ
 PTCALITVGHGRGEHVLHLEPGSVESGRGRCPHEPSRPFASFIDGELYTGLTADFLGREAMIFRSGGPRP
 ALRSDSDQSLLDHPRFVMAARIIPENSQDNDKVVYFFFSETVSPDGGSNHVTVSRVGRVCVNDAGGQVRV
 VNKWSTFLKARLVCSVPGPGAETHFDQLEDVFLWPKAGKSLEYALFSTVSAVFQGFVAVCYHMADIW
 EVFNGPF AHRDGPQHGWGYPYGGKVPFPRPGVCP SKMTAQPRPF GSTKDY PDEVLQFARA HPLMFVWPVRP
 RHGRPVLVKTHLAQLHQIVVDRVEAEDGTVDVIFLGTDSGSVLKVI ALQAGGSAEPEEVVLEELQVFKV
 PTPITEMEISVKRQMLYVGSRLGVAQLRLHQECETYGTACAECCLARDPYCAWDGASCTHYRPSLGRRRFR
 RQDIRHGPNALQCLGQSQEEAVGLVAATMVGTEHNSTFLECLPKSPQAAVRWLLQRPGEQPDQVKTD
 ERVLHTEGRLFRRLSRFDAGTYTCTTLEHGF SQT VVRLALVVI VASQLDNLFPPEPKPEPPARGGLAS
 TPPKAWYKDILQLIGFANLPRVDEYCVWRGRTTECSGCFRSRSRGKQARGKSWAGLELGKKMKSRVHA
 EHNRTPREVEAT

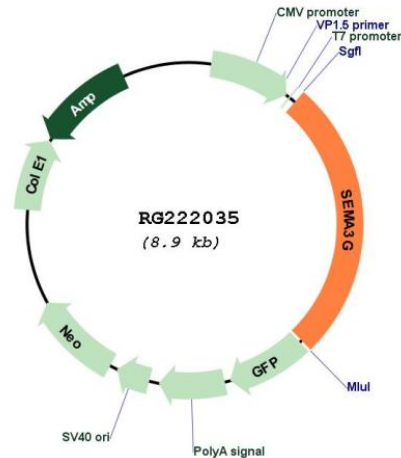
TRTRPLE - GFP Tag - V

Restriction Sites: SgfI-MluI

Cloning Scheme:

Cloning sites used for ORF Shuttling:



Plasmid Map:


ACCN: NM_020163

ORF Size: 2346 bp

OTI Disclaimer: The molecular sequence of this clone aligns with the gene accession number as a point of reference only. However, individual transcript sequences of the same gene can differ through naturally occurring variations (e.g. polymorphisms), each with its own valid existence. This clone is substantially in agreement with the reference, but a complete review of all prevailing variants is recommended prior to use. [More info](#)

OTI Annotation: This clone was engineered to express the complete ORF with an expression tag. Expression varies depending on the nature of the gene.

Components: The ORF clone is ion-exchange column purified and shipped in a 2D barcoded Matrix tube containing 10ug of transfection-ready, dried plasmid DNA (reconstitute with 100 ul of water).

Reconstitution Method:

1. Centrifuge at 5,000xg for 5min.
2. Carefully open the tube and add 100ul of sterile water to dissolve the DNA.
3. Close the tube and incubate for 10 minutes at room temperature.
4. Briefly vortex the tube and then do a quick spin (less than 5000xg) to concentrate the liquid at the bottom.
5. Store the suspended plasmid at -20°C. The DNA is stable for at least one year from date of shipping when stored at -20°C.

RefSeq: [NM_020163.3](#)

RefSeq Size: 4700 bp

RefSeq ORF: 2349 bp

Locus ID: 56920

UniProt ID: [Q9NS98](#)

Cytogenetics: 3p21.1

Protein Families: Druggable Genome, Secreted Protein

Protein Pathways: Axon guidance

Gene Summary: The transcription of this gene is activated by PPAR-gamma, and the resulting protein product plays a role in endothelial cell migration. Expression of this gene also inhibits tumor cell migration and invasion. [provided by RefSeq, Jul 2016]