

Product datasheet for **RG222033**

TMC3 (NM_001080532) Human Tagged ORF Clone

Product data:

Product Type:	Expression Plasmids
Product Name:	TMC3 (NM_001080532) Human Tagged ORF Clone
Tag:	TurboGFP
Symbol:	TMC3
Mammalian Cell Selection:	Neomycin
Vector:	pCMV6-AC-GFP (PS100010)
E. coli Selection:	Ampicillin (100 ug/mL)
ORF Nucleotide Sequence:	>RG222033 representing NM_001080532 Red=Cloning site Blue=ORF Green=Tags(s)

TTTTGTAATACGACTCACTATAGGGCGGCCGGGAATTCGTCGACTGGATCCGGTACCGAGGAGATCTGCC
GCC**CGATCGCC**

ATGAAACCTCGAAGGCATCCCAGCGCTATAGAGGCATCCGGAGAAATGCCAGCCAGTGCTACCTTACC
AGGAATCTCTGCTGCTCAGCAACTTGGATGACAGCTTTAGTGCTGATGAAACAGGGGACAGCAATGATCC
GGAACAAATCTCCAGAATATACAGTCCAGAAAGATCTCATGGCAAACATTCGCTGCAGACCCTGGACT
ATGGGACAGAAGCTGAGGGCATTGAGACAAGCGAAGAACATTGTGCTGAAGTTGAAGGGAGGCTGACCA
GGACCCGAGGCTACCAAGCAGCAGGTGCGAGACTCTGGCGGAAATTTGCTCGTCTCGCTGTAACTTTGT
GGTCATCTTCATTCCCTGGGAAATGAGGATAAAGAAAATCGAGAGTCATTTTGGATCTGGCGTTGCCTCC
TATTTTCATATTCTTGAGATGGTTATTTGGAATTAATATTGTGCTCACCATTATGACAGGTGCTTTTATTG
TCATTCCAGAGCTGATTGCAGGCCAGCCCTTTGGAAGCACAGCCAGGAAGACCATCCCAAGGAGCAGGT
TTCGTCTGCCAAGACCTGGACACCGTCTGGTCTCTGGGGGCTACCTCCAGTACTCTGTCTCTTCTAC
GGATATTACGGCAGGGAGAGGAAGATCGGGAGAGCTGGCTACCGGCTGCCCTTGGCGTATTTCTAGTGG
GGATGGCAGTGTTTGTCTACAGCTTCATCATTCTTTAAAAAAGATGGCTAAGAAGTCCCGCAGGAGTCT
TGCCAGTGTCTCAATGAAAACATACTTCTGCTGGCGGTGTCTGTGCCTGGGATTACCTCATTGGA
AACCCAGAGGCTGCAGAGAGCAAAACAGCTGCCATAGTGAACAGCATCAGGAAGCTATATTGGAAGAAC
AGGAGAAAAAGAAAAGCAAAAACCTGGCAGTGACCATCTGCCTGAGGATTATTGCCAACATCCTGGTGTCT
TCTCTCACTGGCTGGGAGCATTTATCTCATCTACTTTGTGGTGGACCGGTCCCAGAAAGCTGGAGCAGTCCG
AAGAAGGAGCTGACACTTTGGGAAAAGAATGAGGTGAGTGGTGGTCTCCCTCGTCACCATGATAGCAC
CATCAGCCTTTGACCTCATTGTGCCTTAGAGATGTACCACCCAGGACCAGCTGCGCTTCCAGCTTGC
AAGGGTCTTTGTGCTGTATTTGGGAAATCTCTACAGCCTGATCATTGCTCTCCTGGACAAAGTTAACAGC
ATGAGCATTGAGGAAATGGCTACCAAAAATAACACAAGTCATTGGATAGATTCCACCACCTTCTTTGCAA
CCAGGACAGCCCTGAAGAAGAGAAAATGGTCCACATCTCGGCTGGAATGGGGCTCAGGAGAAACAACAC
ATGGGCTTGGAAAGAGACCAGCATTTAGCTTATACCATGCCTTTATAAAGGCCAACAGACTAGCCTC
CACACTCAGAGTCCACAAGACCAGTGTGGGAGACATACGTTGGTTCAGGAGATGCTGAAGCTCTCCATCA
TTGACATGCTCTTACCCTGGCAGCATTCTGCTCATAGACTTCTCCGAGGACTTTTCGTGCGGTA



[View online »](#)

AAGTGACTACTGGTGTGGGATCTGGAGAGCAAGTTTCCTGAATATGGAGAATTCAAAATAGCTGAGAAT
 GTGCTACATTTAGTCTACAACCAAGGAATGATTTGGATGGGGCCTTCTTCTCCCATGTCTCCAGCGT
 TCAACGTTCTCAAACCTATTGGGCTCATGTACCTGAGAAGCTGGGCTGTGCTGACCTGCAATGTGCCCA
 CCAGCAAGTATTCGAGCCTCAAGATCCAACAACCTTACTTTGGCAATGCTCCTGTTTATGCTGTTTCTG
 TGCATGCTGCCAACCATTTTTGCTATTGTCCGATACAAGCCATCTCTAACTGTGGGCCATTTCAGTGGAC
 AAGAGAAAATTTATGACATTGTGTGAGAAACGATTGAGAAAGACTTTCTGTGTGGTTTGGCTCCGTGGT
 TGGACACATCAGTAGCCCGTGGTCTCCTGCCGCACTACTCCTGCTTTTCATGCTCATCTATTATCTC
 CAGAGCATCGCACGGTCTCTAAAGCTCAGCAACCACAGCTCAAAATGCAGATCCAAAACGCAAGATCAG
 AGGATAAGAAAAAGTTGCCAGATGGTAGAAGCCGAATCCAGACCCAGGAAGAAAGCACCACCAAGAGCT
 TCCAAACGACAGTGATCTTACCAGCCAGCTGCTCCTCAGCGCACTCGGGCACACCCCAAAACAACGGCAAC
 GTGGCCCATTTTACTCAGGGAGCAGCAAGAGTGGCAGGATAGAGACAGTCGCACAGTCCATGCCCCAGA
 GCCCGAGGCCAGGGGACAGGGCTCTAGCTCACCTCTCCTGGGGTCCCCAAATCCAGGCTAGAGCATGA
 AACTAACAGGTATCTGCACGGTCTGTGTGCAAGCACCAGTGACCTTACAGGAACAGATCGCGCACACCT
 ATGACATTTACAACGCACATCGAAGATGTACACTCAGAACCTCTTTCCGAAAAGACTTTTCAGAAATCA
 ACCCTCCTCACCGTGGACCACAGGCCTCGACTTTGCTGGCACAGGGTCCCAGGCCACGCCCCAGATA
 CTATGTCAATTAATGAATGTGACTCTTACAAGAAAAACATCTAAATGTCTGGCCAGAAAAGACATTTCAAG
 ATAGATGCTTCAGGTGACATTGTGGAGCTGTACCCAGGAACGTGCGACAATATGCATCCCGGGTCCCC
 GCCAGCTCCCTCCCCACAGTGAGTGAAGAAGAGGAGGAGACGCCAAGCAGAGATTGGATCAAACGGTC
 TCTTCCCCACGCTCCCTGATAGACCTCCGTGGGCTCCTCATTTTTATATTGGGGAGAGGTCCGAAAGT
 CAGACCCGGGATCCCAGCACCAGGGGAGGGTGCCTACAAGTCGTGGAATGAAGATTTTGGGGTCAAC
 TTGAGAGGCCAGCCTATGTGCCAGAAAGCCACGATCCCGGAATTTCCAATACCCACAGCCCCCTGAA
 GCCCAGAGGGAAGCCAGGTTTCGAGCCATCCCTCACGGAATCTGACTCCGTGTGGCAGCATCCAGCAGT
 GACCAGCAGAACAGCAGCGCTGACCAGTACCTGCAGGTACCCACAGCCAGGGCAGGTTCCCGAGGTCCG
 TGGGCCAGCCCAGCAGGGAAGGCCAAGTCCGGGCAGGAGCTGACCGTGATCTGGATGACTTGATTTG
 TTCAGATGTC

ACGCGTACGCGGCCGCTCGAG - GFP Tag - GTTTAA

Protein Sequence:

>RG222033 representing NM_001080532
 Red=Cloning site Green=Tags(s)

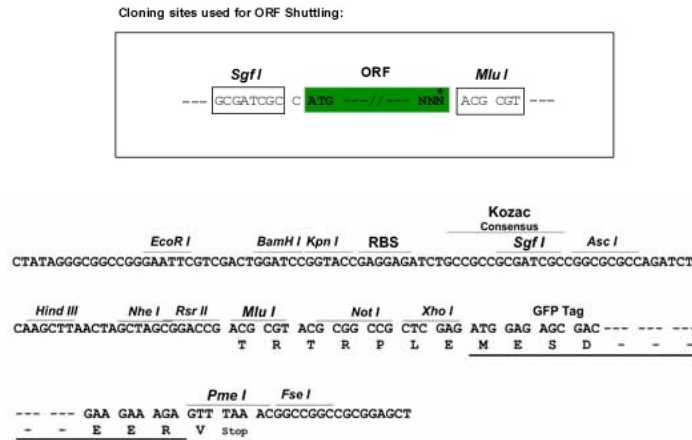
MKTSKASQRYRGIRRNASQCYLQESLLLNLDDSFSADETGDSNDPEQIFQNIQFQKDLMANIRCRPWT
 MGQKLRALRQAKNIVLKFEGRLTRTRGYQAAGAEWRKFARLACNFVVFIPWEMRIKKIESHFSGSVAS
 YFIFLRWLFGINIVLTIMTGAFIWIPEL IAGQPFSTARKTIPKEQVSSAQDLDTVWSLGGYLQYSVLFY
 GYYGRERKIGRAGYRLPLAYFLVGMVFAYSFIILLKKMAKNSRTSLASASNENYFCWRVFCAWDYLI
 NPEAAESKTAIVNSIREAILEEQEKKKSKNLAVTICLRIIANILVLLSLAGSIYLIYFVDRSQKLEQS
 KKELTLEWNEVSVVSLVTMIAPSAFDLIAALEMYHPRTTLRFQLARVLVLYLGNLYSLIIALLDKVNS
 MSIEEMATKNNTSHWIDSTFFATRTAPEEEKWSTSRPGMGLRRNNTWALEETSISAYTMPLIKANKTSL
 HTQSPQDQCWETYVYQEMLKLSIIDMLFTVASILLIDFFRGLFVRYLSDYWCWDLSEKFPYGEFKIAEN
 VLHLVYNQGMIMGAFFSPCLPAFNVLKLIGLMYLRSWAVLTCNVPHQQVFRASRSNNFYLAMLLFMLFL
 CMLPTIFAIVRYKPSLNCGPFSGQEKIYDIYVSETIEKDFPVWFGSVVGHISPPVILPAVLLLFMLIYYL
 QSIARSLKLSNHQLKMQIQNARSEDKKKVAQMVEARIQTQEESTKKLPNDSDLTSQLSSAHSQTPQNGN
 VAHFDGSSKSGRIETVAQSMQSPRPGDRAPSSPLPGVPKSRLEHETNRYLHGLCASTDLHRRNSRTP
 MTFTHIEDVHSEPLFRKDFQQINPPHRGPQASTLLAQGPRPHAPRYVINECDYKHHKHLNVWPERHFK
 IDASGDIVELYPRNVRQYASRVPRQPPSPQLSEEEEETPSRDWIKRSLPPRSLIDLRRAPHFYIGERSES
 QTRDPEHQGRVHYKSWNEDEFEGHLERPAYVPRKPRSRNFQYPQPLKPRGKPRFEPSTESDSVSAASSS
 DQQNSSADQYLQVTHSQGRFPRSVGQPSRRKAKSGQELTVLDLDDLICSDV

TRTRPLE - GFP Tag - V

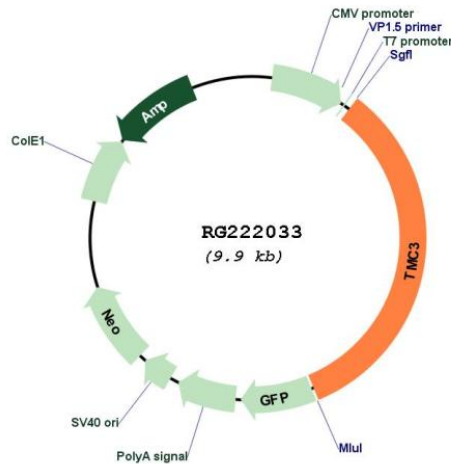
Restriction Sites:

Sgfl-MluI

Cloning Scheme:



Plasmid Map:



ACCN: NM_001080532

ORF Size: 3300 bp

OTI Disclaimer: The molecular sequence of this clone aligns with the gene accession number as a point of reference only. However, individual transcript sequences of the same gene can differ through naturally occurring variations (e.g. polymorphisms), each with its own valid existence. This clone is substantially in agreement with the reference, but a complete review of all prevailing variants is recommended prior to use. [More info](#)

OTI Annotation: This clone was engineered to express the complete ORF with an expression tag. Expression varies depending on the nature of the gene.

Components:	The ORF clone is ion-exchange column purified and shipped in a 2D barcoded Matrix tube containing 10ug of transfection-ready, dried plasmid DNA (reconstitute with 100 ul of water).
Reconstitution Method:	<ol style="list-style-type: none">1. Centrifuge at 5,000xg for 5min.2. Carefully open the tube and add 100ul of sterile water to dissolve the DNA.3. Close the tube and incubate for 10 minutes at room temperature.4. Briefly vortex the tube and then do a quick spin (less than 5000xg) to concentrate the liquid at the bottom.5. Store the suspended plasmid at -20°C. The DNA is stable for at least one year from date of shipping when stored at -20°C.
RefSeq:	<u>NM_001080532.3</u>
RefSeq Size:	3303 bp
RefSeq ORF:	3303 bp
Locus ID:	342125
UniProt ID:	<u>Q7Z5M5</u>
Cytogenetics:	15q25.1
Protein Families:	Transmembrane
Gene Summary:	Probable ion channel.[UniProtKB/Swiss-Prot Function]