

## Product datasheet for **RG222025**

### ZNF285 (NM\_152354) Human Tagged ORF Clone

#### Product data:

|                           |   |
|---------------------------|---|
| Product Type:             | Expression Plasmids                       |
| Product Name:             | ZNF285 (NM_152354) Human Tagged ORF Clone |
| Tag:                      | TurboGFP                                  |
| Symbol:                   | ZNF285                                    |
| Synonyms:                 | ZNF285A                                   |
| Mammalian Cell Selection: | Neomycin                                  |
| Vector:                   | pCMV6-AC-GFP (PS100010)                   |
| E. coli Selection:        | Ampicillin (100 ug/mL)                    |



[View online »](#)

**ORF Nucleotide Sequence:**

>RG222025 representing NM\_152354  
 Red=Cloning site Blue=ORF Green=Tags(s)

TTTTGTAATACGACTCACTATAGGGCGGCCGGAATTCGTCGACTGGATCCGGTACCGAGGAGATCTGCC  
 GCC**CGGATCGCC**

ATGATTAAGTTCAGAAAGGGTGACATTCAAGGATGTGGCTGTTGTCTTACCAAGGAAGAGCTGGCAC  
 TATTGGATAAAGCCAGATAAACCTGTACCAAGATGTGATGCTGGAAAACCTCAGGAACCTCATGTTAGT  
 GAGAGACGGGATTAACAACATTTTGAATCTTCAGGCAAAGGGTTAAGTTACCTTTCGCAAGAAGTG  
 CTTCAATTGCTGGCAGATTTGAAACAAAGGATCCGGGATTTAACTGTGAGTCAGGATTATATCGTGAACC  
 TTCAAGAAGAGTGTCCCCACATTTAGAAGATGTTCCCTCAGTGAAGAGTGGCAGGCATTTCTCTTCA  
 GATTTCTGAAAATGAAAATATGTAGTAAATGCCATTATCAAAAATCAAGATATCACAGCATGGCAAAGC  
 CTGACACAGGTTCTTACCCAGAATCGTGGAGGAAAGCCAACATAATGACCGAGCCCGAAGCTCAGG  
 GAAGATAAAGGGAATTTACATGGAAGAGAAATTTGACAGACGTGCTCAGCATGATGACAGCCTCAGTTG  
 GACCTCATGTGATCATCATGAGTCCCAAGAATGTAAGGAGAGGACCCTGGTAGACATCCAGCTGTGGG  
 AAAAATTGGGTATGAAATCAACGGTTGAAAAACGTAATGCGGCCATGTATTACCACAGCCTTCCCAT  
 GTAATAACTGTGGGTGGCCTTTCAGATGATACAGATCCTCATGTCCATCACAGCACTCACCTAGGAGA  
 AAAATCTTATAAATGTGACCAAGTATGAAAGAACTTTAGTCAGAGCCAAGATCTTATCGTTCATTGTA  
 ACTCACTCTGGCAAGACTCCCTATGAATTCACGAATGGCCTATGGGCTGCAAACAGAGCTCAGACCTTC  
 CCAGATATCAGAAAGTCTCTCAGGAGACAAACCTACAATGTAAGAAATGTGGCAAGGGCTTCAGGCG  
 CAGCTCTCCCTTCAACCATCATCGAGTCCACACAGGGGAGATGCCCTACAAATGCGATGAATGTGGG  
 AAAGGGTTGGATTTAGGTCACCTCTTTGTATTCATCAGGGAGTACACACAGGAAAAAGCCCTATAAAT  
 GTGAAGAGTGTGGGAAGGGCTTTGATCAGAGCTCAACCTTCTTGTCCATCAGAGATCCACACTGGAGA  
 GAAGCCCTACAAATGCAGTGTGAGTGGCAAGTGTCTTGTCAAGCTCCGTTCTTCAAGTCCACTGGAGG  
 TTTACACAGGGGAGAAACCATATAGGTGTGGTGTGAGTGTGAAAGGGCTCAGCCAAATGTACACACCTTC  
 ACATTCACCAGAGAGTCCACACAGGGGAGAAACCATACAATGCAATGTGTGTGGAAGGATTTTGCCTA  
 TAGCTCTGTTCTTACACTCATCAGAGAGTTCACACTGGAGAAAAACCATATAAATGTGAAGTGTGTGGA  
 AAGTGCTTACAGTTACAGTTCATATTTTCACTTACATCAAAGAGATCACATCAGAGAGAAACCATATAAAT  
 GTGATGAGTGTGGTAAAGGCTTCAGCCGAATTCAGATCTTAATGTTACCTCAGAGTCCACACAGGAGA  
 GAGGCCCTATAAGTGAAGGCATGTGGTAAAGGCTTCAGTCGTAATTCATACCTCCTTCCCATCAGAGA  
 GTGCATATAGATGAGACACAGTACACACTGTGAGCGTGAAAGGACCTTCTGACTCATCAAAGACTAC  
 ATGAGCAGAGAGAAACATTA

**ACGCGT**ACGCGGCCGCTCGAG - GFP Tag - GTTTAA

**Protein Sequence:**

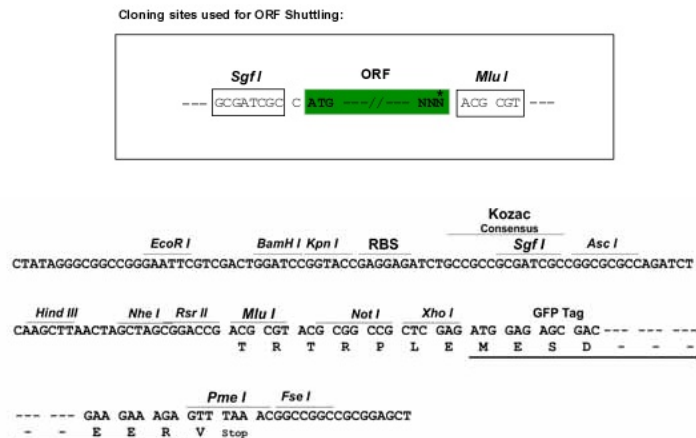
>RG222025 representing NM\_152354  
 Red=Cloning site Green=Tags(s)

MIKFQERVTFKDVAVVFTKEELALLDKAQINLYQDVMLENFRNMLVDRGKNNILNLQAKGLSYLSQEV  
 LHCWQIWKQRIRDLTVSQDYIVNLQEECSPHLEDVSLSEEWAGISLQISENENYVVAIIKNQDITAWQS  
 LTQVLTPESWRKANIMTEPQNSQGRYKGIYMEELYRRAQHDDSLSWTSCDHHSQECKGEDPGRHPSCG  
 KNLGMKSTVEKRNAAHVLPQFPNCNGVAFADDDPHVHSTHLGEKSYKCDQYGNFSQSQDLIVHCK  
 THSGKTPYEFHEWPMGCKQSSDLPRYQKVSSGDKPYKCKEKGKGFRRSSSLHNNHRVHTGEMPKCDECG  
 KGFGRSLLCIHQGVHTGKPKYCEECGKGFQSSNLLVHQRVHTGEKPYKCNVCGKDFAYSSVLHHTQRVHTGEKPYKCEVCG  
 FHTGEKPYRCGECGKGSQCTHLHIHQRVHTGEKPYKCNVCGKDFAYSSVLHHTQRVHTGEKPYKCEVCG  
 KCFSSYFHLHQRDHIREKPYKDEECGKGF SRNSDLNVHLRVHTGERPYKCKACGKGF SRNSYLLAHQR  
 VHIDETQYTHCERKDLLTHQRLHEQRETL

**TRTRPLE** - GFP Tag - V

**Restriction Sites:**

Sgfl-MluI

**Cloning Scheme:**


**ACCN:** NM\_152354

**ORF Size:** 1770 bp

**OTI Disclaimer:** The molecular sequence of this clone aligns with the gene accession number as a point of reference only. However, individual transcript sequences of the same gene can differ through naturally occurring variations (e.g. polymorphisms), each with its own valid existence. This clone is substantially in agreement with the reference, but a complete review of all prevailing variants is recommended prior to use. [More info](#)

**OTI Annotation:** This clone was engineered to express the complete ORF with an expression tag. Expression varies depending on the nature of the gene.

**Components:** The ORF clone is ion-exchange column purified and shipped in a 2D barcoded Matrix tube containing 10ug of transfection-ready, dried plasmid DNA (reconstitute with 100 ul of water).

**Reconstitution Method:**

1. Centrifuge at 5,000xg for 5min.
2. Carefully open the tube and add 100ul of sterile water to dissolve the DNA.
3. Close the tube and incubate for 10 minutes at room temperature.
4. Briefly vortex the tube and then do a quick spin (less than 5000xg) to concentrate the liquid at the bottom.
5. Store the suspended plasmid at -20°C. The DNA is stable for at least one year from date of shipping when stored at -20°C.

**RefSeq:** [NM\\_152354.6](#)

**RefSeq Size:** 2703 bp

**RefSeq ORF:** 1773 bp

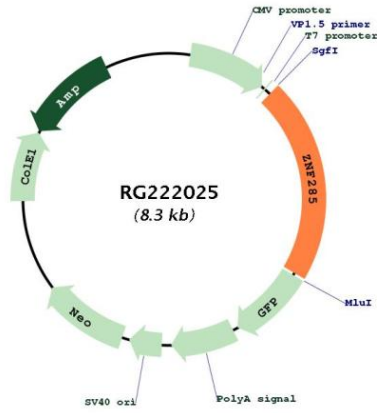
**Locus ID:** 26974

**UniProt ID:** [Q96NJ3](#)

**Cytogenetics:** 19q13.31

Domains: zf-C2H2  
 Protein Families: Transcription Factors  
 Gene Summary: May be involved in transcriptional regulation.[UniProtKB/Swiss-Prot Function]

**Product images:**



Circular map for RG222025