

Product datasheet for **RG222021**

ELMO2 (NM_182764) Human Tagged ORF Clone

Product data:

Product Type:	Expression Plasmids
Product Name:	ELMO2 (NM_182764) Human Tagged ORF Clone
Tag:	TurboGFP
Symbol:	ELMO2
Synonyms:	CED-12; Ced-12A; CED12; ELMO-2; VMPI
Mammalian Cell Selection:	Neomycin
Vector:	pCMV6-AC-GFP (PS100010)
E. coli Selection:	Ampicillin (100 ug/mL)



[View online »](#)

ORF Nucleotide
Sequence:

>RG222021 representing NM_182764
Red=Cloning site Blue=ORF Green=Tags(s)

TTTTGTAATACGACTCACTATAGGGCGGCCGGAATTCGTCGACTGGATCCGGTACCGAGGAGATCTGCC
GCCCGCATCGCC

ATGCCACCACCGTCAGACATTGTCAAAGTGCCATTGAGTGCCAGGTGCTAACGCCAGCTCCTTGAAA
TCGACCAGAAACGGCCCTGGCATCCATTATCAAGGAAGTTGTGATGGGTGGTGGTCCAAACCCAGA
GTATTATACCCTCCGTTATGCAGATGGTCTCAGCTGTACATCACCGAACAGACTCGCAGTGACATTAAG
AATGGGACAATCTTACAACCTGGCTATCTCCCCGTCGCCGGCTGCACGCCAGCTGATGGAGAGGACCCAGT
CATCCAACATGGAGACCCGGCTGGATGCCATGAAGGAGCTGGCCAAGCTCTCTGCCGACGTGACTTTCGC
TACTGAGTTCATCAACATGGATGGCATCATTGTGCTGACAAGGCTCGTGGAAAGTGAACCAAGCTCTTG
TCCCCTACAGTGAGATGCTGGCATTACCCTGACTGCCTTCTAGAGCTCATGGACCATGGCATTGTCT
CCTGGGACATGGTTTCAATCACCTTTATTAAGCAGATTGCAGGGTATGTGAGCCAGCCCATGGTGGACGT
GTCAATCCTTCAGAGGTCCTGGCCATCCTGGAGAGCATGGTCTTGAACAGCCAGAGTCTGTACCAGAAG
ATAGCCGAGGAAATCACCGTGGGACAGCTCATCTCACACCTCCAGGTCTCCAACAGGAGATTGAGACCT
ACGCCATTGCACTGATTAATGCACCTTTTCTGAAGGCTCCTGAGGACAAAACGACAGGATATGGCAAATGC
ATTTGCACAGAAGCATCTCCGGTCTATAATCCTGAATCATGTGATCCGAGGGAACCGCCCATCAAACT
GAGATGGCCCATCAGCTATATGCTCTTCAAGTCTAACCTTTAACCTTCTGGAAGAAAGGATGATGACCA
AGATGGACCCCAATGACCAGGCTCAAAGGGACATCATATTTGAACTGAGGAGGATTGCATTTGACGCAGA
GTCTGATCCTAGCAATGCCCTGGGAGTGGGACCGAAAACGCAAAGCCATGTACACAAAGGACTACAAA
ATGCTGGGATTTACCAACCACATCAATCCAGCCATGGACTTTACCCAGACTCCTCCTGGAATGCTGGCCT
TGGACAACATGCTGTACTTGGCTAAAGTCCACCAGGACACCTACATCCGGATTGTCTTGGAGAACAGTAG
CCGGGAAGACAAAACATGAATGCCCTTTGGCCGAGTGCCATTGAGCTCACCAAAATGCTCTGTGAAATC
CTGCAGGTTGGGAACTACCAAAATGAAGGACGCAATGACTACCACCCGATGTTCTTTACCCATGACCGAG
CCTTTGAAGAGCTCTTTGGAATCTGCATCCAGCTGTTGAACAAGACCTGGAAGGAGATGAGGGCAACAGC
AGAGGACTTCAACAAGGTTATGCAAGTCGTCCGAGAGCAAATCACTCGAGCTTTGCCCTCCAAACCCAAC
TCTTTGGATCAGTTCAAGAGCAAATGCGTAGCCTGAGTTACTCTGAGATTCTACGACTGCGCCAGTCTG
AGAGGATGAGTCAGGATGACTTCCAGTCCCGCCAATTGTGGAGCTGAGGGAGAAGATCCAGCCGAGAT
CCTTGAGCTGATCAAGCAGCAGCGCCTGAACCGGCTCTGTGAGGGCAGCAGCTTCCGAAAGATTGGGAAC
CGCCGAAGGCAAGAACGTTCTGGTACTGCCGGTTGGCACTGAACCACAAGGTCCTTCACTATGGTACT
TGATGACAACCCACAAGGGGAGGTGACATTTGAATCCCTGCAGGAGAAAATTCCTGTTGCAGACATTAA
GGCCATTGCACTGGAAAGATTGTCCCACATGAAAGAGAAAAGTGTCTGAAACAGAACAAGGAGGTG
TTGGAATTGGCCTTCTCCATCCTGTATGACCCTGATGAGACCTTAAACTTCATCGCACCTAATAAATATG
AGTACTGCATCTGGATTGATGGCCTCAGTGCCTTCTGGGGAAGGACATGTCCAGTGAGCTGACCAAGAG
TGACCTGGACACCCTGCTGAGCATGGAGATGAAGCTGCGGCTCCTGGACCTGGAGAACATCCAGATTCCC
GAAGCCCCACCCCCATCCCAAGGAGCCAGCAGCTATGACTTTGTCTATCACTATGGC

ACGCGTACGCGGCCGCTCGAG – GFP Tag – GTTTAA

Protein Sequence: >RG222021 representing NM_182764
 Red=Cloning site Green=Tags(s)

MPPPSDIVKVAIEWPGANAQLLEIDQKRPLASIIKEVCDGWSLPNPEYYTLRYADGPQLYITEQTRSDIK
 NGTILQLAISPSRAARQLMERTQSSNMETRLDAMKELAKLSADVTFATEFINMDGIIVLTRLVESGKLL
 SHYSEMLAFTLTAFLELMDHGIVSWDMVSITFIKQIAGYVSQPMVDVSIILQRSLAILESMVLNSQSLYQK
 IAEEITVGQLISHLQVSNQEIQTYAIALINALFLKAPEDKRQDMANAFQKHLRSIILNHVIRGNRPIKT
 EMAHQLYVLQVLTFNLLLEERMMTKMDPNDAQRDIIIFELRRIAFDAESDPSNAPGSGTEKRKAMYTKDYK
 MLGFTNHINPAMDFTQTTPGMLALDNMLYLAKVHQDQTYIRIVLENSREDKHECPFRSAIELTKMLCEI
 LQVGELPNEGRNDYHPMFFTHDRAFEELFGICIQLLNKTWKEMRATAEDFNKVMQVVREQITRALPSKPN
 SLDQFKSKLRSLSYSEILRLRQSERMSQDDFQSPPIVELREKIQPEILELIKQRLNRLCEGSSFRKIGN
 RRRQERFWYCRALNHHKVLHYGDLDDNPQGEVTFESLQEKIPVADIKAIIVTGKDCPHMKEKSALKQNKEV
 LELAFSILYDPDETLNF IAPNKYEYCIWIDGLSALLGKDMSELTKSDLDTLLSMEMKLRLLDLENIQIP
 EAPPPIPKEPSSYDFVYHYG

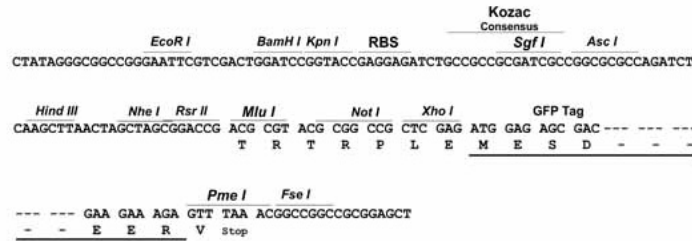
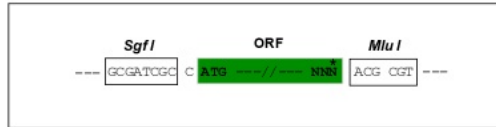
TRTRPLE - GFP Tag - V

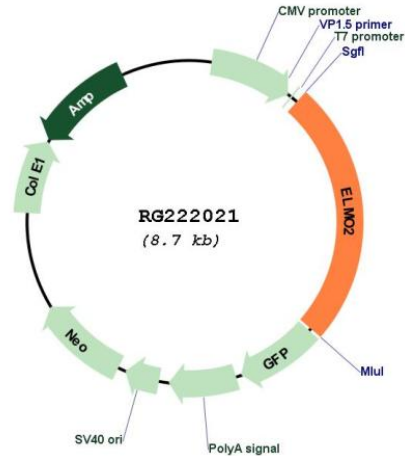
Restriction Sites:

SgfI-MluI

Cloning Scheme:

Cloning sites used for ORF Shutting:



Plasmid Map:


ACCN: NM_182764

ORF Size: 2160 bp

OTI Disclaimer: The molecular sequence of this clone aligns with the gene accession number as a point of reference only. However, individual transcript sequences of the same gene can differ through naturally occurring variations (e.g. polymorphisms), each with its own valid existence. This clone is substantially in agreement with the reference, but a complete review of all prevailing variants is recommended prior to use. [More info](#)

OTI Annotation: This clone was engineered to express the complete ORF with an expression tag. Expression varies depending on the nature of the gene.

Components: The ORF clone is ion-exchange column purified and shipped in a 2D barcoded Matrix tube containing 10ug of transfection-ready, dried plasmid DNA (reconstitute with 100 ul of water).

Reconstitution Method:

1. Centrifuge at 5,000xg for 5min.
2. Carefully open the tube and add 100ul of sterile water to dissolve the DNA.
3. Close the tube and incubate for 10 minutes at room temperature.
4. Briefly vortex the tube and then do a quick spin (less than 5000xg) to concentrate the liquid at the bottom.
5. Store the suspended plasmid at -20°C. The DNA is stable for at least one year from date of shipping when stored at -20°C.

RefSeq: [NM_182764.2](#), [NP_877496.1](#)

RefSeq Size: 3596 bp

RefSeq ORF: 2163 bp

Locus ID: 63916

UniProt ID: [Q96JJ3](#)

Cytogenetics: 20q13.12

Gene Summary: The protein encoded by this gene interacts with the dedicator of cyto-kinesis 1 protein. Similarity to a *C. elegans* protein suggests that this protein may function in phagocytosis of apoptotic cells and in cell migration. Alternative splicing results in multiple transcript variants. [provided by RefSeq, Dec 2015]