

Product datasheet for **RG222015**

Cytokeratin 2 (KRT76) (NM_015848) Human Tagged ORF Clone

Product data:

Product Type:	Expression Plasmids
Product Name:	Cytokeratin 2 (KRT76) (NM_015848) Human Tagged ORF Clone
Tag:	TurboGFP
Symbol:	KRT76
Synonyms:	HUMCYT2A; KRT2B; KRT2P
Mammalian Cell Selection:	Neomycin
Vector:	pCMV6-AC-GFP (PS100010)
E. coli Selection:	Ampicillin (100 ug/mL)



[View online »](#)

ORF Nucleotide Sequence:

>RG222015 representing NM_015848
 Red=Cloning site Blue=ORF Green=Tags(s)

TTTTGTAATACGACTCACTATAGGGCGGCCGGGAATTCGTCGACTGGATCCGGTACCGAGGAGATCTGCC
 GCCGCGATCGCC

ATGAACAGACAAGTTTGAAGAAATCCTTCAGTGGCAGGAGCCAGGGTTTCTCTGGCCGCTCTGCTGTGG
 TCTCCGGCAGCAGCAGGATGAGCTGTGTGGCCCGCTCTGGGGGAGCTGGTGGAGGGCCTGTGGCTTCAG
 GAGCGGAGCAGGCACTTTGGCAGTCGACGCTCTACAACCTGGGCAGCAACAAGAGCATCTCCATCAGC
 GTGGCAGCTGGCAGCTCCCGGGCTGGAGGCTTTGGGGGAGGGCGGAGCAGCTGTGGCTTTGCAGGTGGCT
 ATGGAGGTGGCTTTGGGGCAGCTATGGTGGTGGCTTTGGTGGTGGCAGAGGAGTAGGTAGTGGTTTTGG
 AGGGGCTGGTGGCTTTGGTGGAGCTGGTGGCTTTGGTGGTCTGGTGTATTTGGTGGCCTGGCAGCTTT
 GGTGGTCTGGTGGCTTTGGCCCTGGGGGCTTTCTGGGGGAATTCAGGAAGTATTGTAACCAGAGTC
 TCCTGCAGCCCCAATGTGGAGATCGACCCCAAGATTGGCAAGTAAAGGCCAGGAGCGGGAACAGAT
 CAAGACCTCAACAACAAGTTTGCTCCTTCATCGACAAGGTGCGGTTCTTGAACAGCAGAACAAGGTC
 CTGGAGACCAAGTGGAACTGCTCCAGCAGCAGACCACAGGCTCAGGGCCAGCAGCCTGGAGCCTGT
 TTGAATCTACATCAGCTTCTATGCAAGCAGCTAGATCACTTCTAGGGGAGAGGGGAACCTGGAGGG
 AGAGCTGAAAAGCATGCAGGACCTGGTGGAAAGACTTCAAAAAGAAGTATGAAGATGAAATCAACAAACGC
 ACTGCCGAGAGAATGAGTTTGTGGGGCTCAAGAAGGATGTGGATGCGGCTTTCATGAACAAGGTGGAGC
 TGCAGGCCAAAGTGGACAGCCTGACAGATGAAGTCAGCTTCTGAGGACCTCTATGAGATGGAGCTGTC
 CCAGATGCAAAGCCATGCCAGTGACACGCTGTGGTCTGTCCATGGACAACAACCGTGCCTGGACCTG
 GGCAGCATCATTGCCGAGTCCGCACCCAGTATGAGGAGATTGCCAGAGGAGCAAGTCTGAAGCTGAGG
 CCCTGTACCAGACCAAGCTTGGGGAGCTGCAGACCACAGCTGGCAGGCATGGGGATGACCTGAGGAACAC
 CAAGAGTGAGATCATGGAGCTCAACAGGATGATCCAGAGGCTACGGGCTGAGATTGAAAAATGTCAAGAAG
 CAGAATGCCAACCTGCAGACGGCAATTGCAGAGGCTGAGCAGCGTGGAGAGATGGCCCTCAAGGACGCCA
 ATGCCAAGCTCCAAGACTTGCAACTGCAGACTGCCCTACAGAAGGCTAAGGATGACCTGGCTCGGCTCCTGC
 CTACCAGGAGCTGATGAATGTCAAGCTGGCCCTGGATGTGGAGATTGCCACCTACCGCAAGCTGCTGGAG
 GGAGAGGAGTGCAGGATGTCTGGAGAATGTGAGAGTGCCTGTGCATTTCAAGTGGTGCAGCAATGTCACCA
 GCACAAGTGGCAGCTCTGGCAGTAGCCGTGGAGTTTTTGGAGGGGTCAGTGGCAGTGGCAGTGGTGGCTA
 CAAAGGCCGAGCAGCAGCAGCAGCAGCAGCGGCTATGGAGTCAAGTGGCGGCAGCGGAGTGGCTATGGA
 GGGGTGAGCAGTGGCAGCACTGGGGCAGGGGTAGCAGCGGGAGTACCAGAGCAGCAGTGGGAGCA
 GGCTCGGCGGTGAGGTAGCATCTCCGTGAGCCACAGTGGAAATGGGCTCCAGCTCTGGCAGCATCCAGAC
 TTCTGGAGGAAGTGGCTACAAGTCTGGTGGTGGAGGCAGCACCAGTATCCGCTTCTCCAGACCAGCAGC
 TCAAGCCAGCATAGCTCCACCAAG

ACGCGTACGCGGGCCGCTCGAG – GFP Tag – GTTTAA

Protein Sequence:

>RG222015 representing NM_015848
 Red=Cloning site Green=Tags(s)

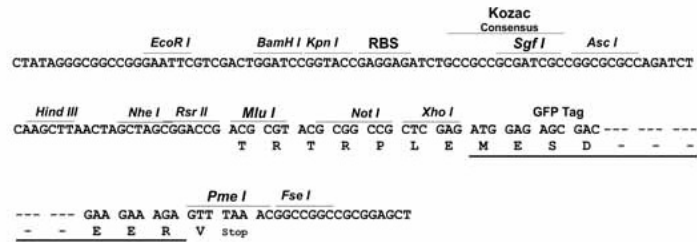
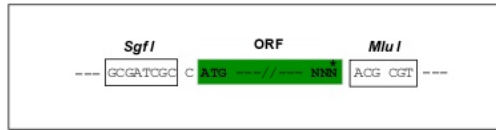
MNRQVCKKSFSGRSQGFSGRSVAVVSGSSRMSCVARSGGAGGGACGFRSGAGSFGSRSLYNLGSNKISIS
 VAAGSSRAGGFGGGRSSCGFAGGYGGFSGSYGGFGGGRGVSGFSGGAGGFGGAGGFGGPGVFGGPGSF
 GGPGGFPGGFPGGIQEIVNQSLQLPLNVEIDPQIGQVKAQEREQIKTLNKNKFAFIDKVRFLQKQNV
 LETKWELLQQQTGSGPSSLEPCFESYISFLCKQLDSLGERGNLEGLKSMQDLVEDFKKKYEDEINKR
 TAAENEFVGLKKDVAAFMKNKVELQAKVDSL TDEVSFLRTL YEMELSQMASHASDT SVVLSMDNNRCLDL
 GSIIAEVRTQYEEIAQRSKSEAEALYQTKLGELQTTAGRHGDDL RNTKSEIMELNRMIQRLRAEIEENVK
 QNANLQTAIAEAEQRGEMALKDANAKLQDLQALQKAKDDLARLLRQYELMNVKLALDVEIATYRKLLE
 GEECRMSEGCQSAVCISVVSNTSTSGSSGSRGVFVGGVSGSGSGGYKGGSSSSSSSGYGVSGSGSGY
 GVSSGSTGGRGSSGSYQSSSSGSRLLGGAGSISVSHSGMSSSGSIQTSGSGSYKSGGGGSTIRFSQTTS
 SSQHSSTK

TRTRPLE – GFP Tag – V

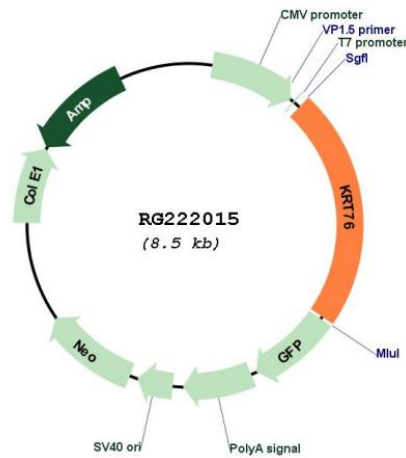
Restriction Sites: SgfI-MluI

Cloning Scheme:

Cloning sites used for ORF Shutting:



Plasmid Map:



ACCN: NM_015848

ORF Size: 1914 bp

OTI Disclaimer:	The molecular sequence of this clone aligns with the gene accession number as a point of reference only. However, individual transcript sequences of the same gene can differ through naturally occurring variations (e.g. polymorphisms), each with its own valid existence. This clone is substantially in agreement with the reference, but a complete review of all prevailing variants is recommended prior to use. More info
OTI Annotation:	This clone was engineered to express the complete ORF with an expression tag. Expression varies depending on the nature of the gene.
Components:	The ORF clone is ion-exchange column purified and shipped in a 2D barcoded Matrix tube containing 10ug of transfection-ready, dried plasmid DNA (reconstitute with 100 ul of water).
Reconstitution Method:	<ol style="list-style-type: none">1. Centrifuge at 5,000xg for 5min.2. Carefully open the tube and add 100ul of sterile water to dissolve the DNA.3. Close the tube and incubate for 10 minutes at room temperature.4. Briefly vortex the tube and then do a quick spin (less than 5000xg) to concentrate the liquid at the bottom.5. Store the suspended plasmid at -20°C. The DNA is stable for at least one year from date of shipping when stored at -20°C.
RefSeq:	NM_015848.2
RefSeq Size:	2513 bp
RefSeq ORF:	1917 bp
Locus ID:	51350
UniProt ID:	Q01546
Cytogenetics:	12q13.13
Gene Summary:	Keratins are intermediate filament proteins responsible for the structural integrity of epithelial cells and are subdivided into epithelial keratins and hair keratins. The type II keratins are clustered in a region of chromosome 12q13. [provided by RefSeq, Jun 2009]