

Product datasheet for **RG222010**

Cytoplasmic dynein 1 light intermediate chain 1 (DYNC1LI1) (NM_016141) Human Tagged ORF Clone

Product data:

Product Type:	Expression Plasmids
Product Name:	Cytoplasmic dynein 1 light intermediate chain 1 (DYNC1LI1) (NM_016141) Human Tagged ORF Clone
Tag:	TurboGFP
Symbol:	DYNC1LI1
Synonyms:	DLC-A; DNCLI1; LIC1
Mammalian Cell Selection:	Neomycin
Vector:	pCMV6-AC-GFP (PS100010)
E. coli Selection:	Ampicillin (100 ug/mL)



[View online »](#)

ORF Nucleotide Sequence:

>RG222010 representing NM_016141
 Red=Cloning site Blue=ORF Green=Tags(s)

TTTTGTAATACGACTCACTATAGGGCGGCCGGGAATTCGTCGACTGGATCCGGTACCGAGGAGATCTGCC
 GCCCGCATCGCC

ATGGCGGCGGTGGGGCGAGTCGGCTCCTTCGGTCTTCTCGCCGGGATTATCCTCGACTTACACTGGCG
 GCCCTTGGGCAACGAGATAGCGTCGGGCAACGGTGGCGCCGCGCAGGGCAGCAGCAGGACGGGCAGAA
 CCTTTGGTCTGCATCCTCAGCGAGGTCTCACCCGCTCGCGCTCCAAGCTCCCTGCGGGGAAGAACGTG
 CTAAGTCTGGGTGAAGATGGAGCTGAAAAACAAGCTTAATAAGAAAAATTCAGGGAATAGAGGAGTATA
 AGAAAGGAAGAGGATTGGAATATTTGACTTAAATGTGCATGATGAAGACAGGGATGATCAACAAGATG
 TAATGTTTGGATCTTAGATGGAGACCTATATCACAAAGGCCTCCTTAAATTTTCACTGGATGCCGTATCT
 CTGAAGGATACTTAGTATGCTGGTGTGACATGTCAAAGCCTGGACTGCTTTGGATTCTTTACAGA
 AATGGGCAAGTGTGTTAGAGAACATGTTGACAACTGAAAATCCCTCCTGAAGAAATGAAACAAATGGA
 AAAAAAGTTGATTAGAGACTTCCAAGAATATGTAGAGCCAGGAGAAGACTTCCCGGCTTCTCCCGAGAGA
 AGAAATACTGCGTCACAAGAAGACAAAGATGACAGTGTAGTTTTACCTCTGGGTGCGGATACACTTACAC
 ATAACCTGGGCATTCCAGTACTAGTGTGTCACAAAGTGTGATGCCATTAGTGTATTGGAGAAAGAACA
 TGACTACAGAGATGAACATTTTGTATTTTATTAGTACATATCCGGAAGTTTTGTTTACAGTATGGTGCA
 GCATTTTACACTTCAGTAAAAGAAAACAAAAATATAGACTTAGTATATAAATACATCGTTCAGAAAAC
 TATATGGATTTCCCTATAAGATTCCTGCTGTTGTTGTGGAAAAGGATGCAGTATTTATCCAGCAGGGTG
 GGATAATGATAAGAAAATAGGAATATTACATGAAAATTTCAAACATTAAGAGCAGAAGATAATTTTGAA
 GACATCAACTAAACCACCTGTTGAAAGTTTGTACATGAGAAGGAAATATGCGAGAAGATGATCAGG
 TGTTTCTTATGAAGCTACAGTCCCTTTTAGCAAAGCAACCACCACTGCAGCTGGAAGGCCTGTGGATGC
 CTACCAAGAGTCCCAGGAGGCTCCCCACGAAACCAAAATAGATCTGTATCATCTAATGTTGCCAGCGTG
 TCACCCATTCTGCTGGGTCAAAAAAATTTGATCCAAACATGAAAGCTGGAGCTACAAGTGAAGCGTTC
 TGGCAAATTTCTCAACAGTTTGTGAGTAAAAAGACTGGCTCTCCAGGAGGCCCTGGTGTGAGTGGTGG
 TAGCCCTGCAGGTGGGGCTGGAGGTGGAAGCAGTGGTTTACCACCATCCACCAAAAAGTCAGGCCAGAAG
 CCTGTCTTAGATGTTTATGCAGAACTAGACAGAATTACACGAAAACAGTTACAGTTTCTCCACAACAC
 CTACATCTCTACGAAGGAGAAGCTTCT

ACGCGTACGCGGCCGCTCGAG - GFP Tag - GTTTAA

Protein Sequence:

>RG222010 representing NM_016141
 Red=Cloning site Green=Tags(s)

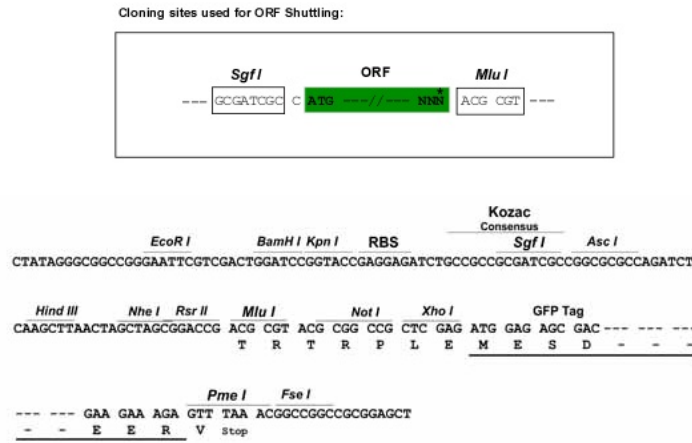
MAAVGRVGSFGSSPPGLSSTYTGGPLGNEIASNGGAAAGDDEDGQNLWSCILSEVSTRSRSLKLPAGKNV
 LLLGEDGAGKTSLIRKIQIEEYKKGRLLEYLYLNVHDEDRDQTRCNVWILDGDLYHKGLLKFSLDAVS
 LKDTLVMLVVDMSKPWTALDSLQKVASVREHVDKLIKIPPEEMKQMEQKLIKIRDFQEYVPEGDFPASPQR
 RNTASQEDKDDSVVPLGADTLTHNLGIPVLVCTKCDASVLEKEHDYRDEHFDFIQSHIRKFLQYGA
 ALIYTSVKENKNIDL VYKYIVQKLYGFPYKIPAVVVEKDAVFIIPAGWDNDKKIGILHENFQTLKAEDNFE
 DIITKPPVVRKFVHEKEIMAEDDQVFLMKLQSLAKQPPTAAGRPVDASPRVPGGSPRTPNRSVSSNVASV
 SPIPAGSKKIDPNMKAGATSEGLANFFNSLLSKKTGSPGGPGVSGGSPAGGAGGSSGLPPSTKKSQK
 PVLDVHAEALDRITRKPVTVSPTTPTSPTEGEAS

TRTRPLE - GFP Tag - V

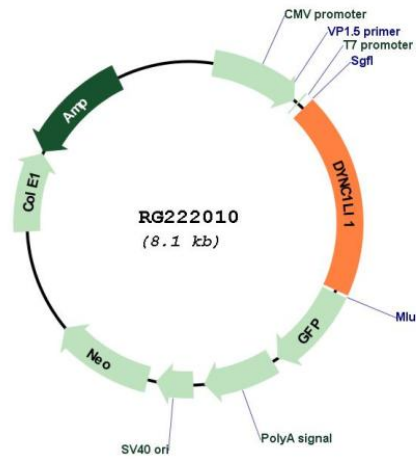
Restriction Sites:

Sgfl-MluI

Cloning Scheme:



Plasmid Map:



ACCN: NM_016141
 ORF Size: 1569 bp

OTI Disclaimer:	<p>Due to the inherent nature of this plasmid, standard methods to replicate additional amounts of DNA in E. coli are highly likely to result in mutations and/or rearrangements. Therefore, OriGene does not guarantee the capability to replicate this plasmid DNA. Additional amounts of DNA can be purchased from OriGene with batch-specific, full-sequence verification at a reduced cost. Please contact our customer care team at custsupport@origene.com or by calling 301.340.3188 option 3 for pricing and delivery.</p> <p>The molecular sequence of this clone aligns with the gene accession number as a point of reference only. However, individual transcript sequences of the same gene can differ through naturally occurring variations (e.g. polymorphisms), each with its own valid existence. This clone is substantially in agreement with the reference, but a complete review of all prevailing variants is recommended prior to use. More info</p>
OTI Annotation:	This clone was engineered to express the complete ORF with an expression tag. Expression varies depending on the nature of the gene.
Components:	The ORF clone is ion-exchange column purified and shipped in a 2D barcoded Matrix tube containing 10ug of transfection-ready, dried plasmid DNA (reconstitute with 100 ul of water).
Reconstitution Method:	<ol style="list-style-type: none"> 1. Centrifuge at 5,000xg for 5min. 2. Carefully open the tube and add 100ul of sterile water to dissolve the DNA. 3. Close the tube and incubate for 10 minutes at room temperature. 4. Briefly vortex the tube and then do a quick spin (less than 5000xg) to concentrate the liquid at the bottom. 5. Store the suspended plasmid at -20°C. The DNA is stable for at least one year from date of shipping when stored at -20°C.
RefSeq:	NM_016141.4
RefSeq Size:	2487 bp
RefSeq ORF:	1572 bp
Locus ID:	51143
UniProt ID:	Q9Y6G9
Cytogenetics:	3p22.3
Gene Summary:	The protein encoded by this gene belongs to light intermediate subunit family, whose members are components of the multiprotein cytoplasmic dynein complex, which is involved in intracellular trafficking and chromosome segregation during mitosis. The protein plays a role in moving the spindle assembly checkpoint (SAC) from kinetochores to spindle poles. The protein may also mediate binding to other cargo molecules to facilitate intracellular vesicle trafficking. [provided by RefSeq, Jul 2016]