

## Product datasheet for **RG221997**

### **MS4A14 (NM\_001079692) Human Tagged ORF Clone**

#### **Product data:**

Product Type:	Expression Plasmids
Product Name:	MS4A14 (NM_001079692) Human Tagged ORF Clone
Tag:	TurboGFP
Symbol:	MS4A14
Synonyms:	MS4A16; NYD-SP21
Mammalian Cell Selection:	Neomycin
Vector:	pCMV6-AC-GFP (PS100010)
E. coli Selection:	Ampicillin (100 ug/mL)



[View online »](#)

**ORF Nucleotide Sequence:**

>RG221997 representing NM\_001079692  
 Red=Cloning site Blue=ORF Green=Tags(s)

TTTTGTAATACGACTCACTATAGGGCGGCCGGGAATTCGTCGACTGGATCCGGTACCGAGGAGATCTGCC  
 GCC**CGGATCGCC**

ATGGAGTCAACATCCCAGGACAGAAGGGCAACTCACGTCACTATAAAACCAAACGAACTGTATTGA  
 CTGCATTTCCCTACAGACCTCATAGCTCTCTGCTGGATTTTCTGAAGGGAGAGCCAAGAGCTTGGGGGC  
 TACCCAGATCCTGCTTGTCTAATCATTGTGGGCTTTGGAACATATTTGCACTTAATTACATCGGTTTC  
 TCCCAAAGACTTCCCCTTGTGCTCACAGGATATCCATTCTGGGGAGCACTTATTGGTCAAGGTGTCA  
 CGGGCATGAATGTTATCAGCTCCTTGGTTGCGATAACTGGGATTACTTTCACCATTCTCAGCTACAGACA  
 TCAAGACAAGTACTGCCAGATGCCATCCTTTGAAGAAATATGTGTTTTTCAGTAGAACTCTTTTCATTGTT  
 CTGTTTTTCTTGCCTTCGGATGTTACTCAAATAGTGAACAACCTGCCCCAGAAGAAAATGATCAATTAC  
 AATTTGTGCTTCAAGAAGAGTTTTCCAGTGATGATTCAACAACAAATGCACAATCTGTTATCTTTGGAGG  
 CTATGCTTTCTTCAAGTTAACACTCTCTAGGAGTCTTTAGTCTCCAACAGGTAATAAAGGTAGAGAA  
 TTTGTGCCAGATGAACAAAAGCAAAGTATCCTTCCATCTCCCAAATTTTCAGAGGAAGAAAATGAACCTT  
 TGCTCCACACTAGAGAAAAGCCCTCAGAAAATATGTCCATTAGCTAGACTCTACATTTAAACAAAT  
 GAAAGATGAAGATCTACAATCTGCTATTGTACAACCTTCTCAAATGCAAACCAAGCTTCTGCAGGACCAA  
 GCTGCGTCACTCCAAGTTTTTCCATCCCATTCTGCACTAAAACCTCGAAGATATATCACCTGAAGACTTGC  
 CATCCCAAGCTCTACCAGTAGAAGGCTGTGAGAAACCAACCATGCCATCTAAGTCTACATCATCCCATGT  
 CAAACAGTCTTCTAATCTGACAGCTAATGACCTGCCCCCTCAAGGCATACTATCCCAAGACACATCATCT  
 CAAGATATGCTGTTTCATGACATGACATCCCAAGATATGCAATCCCTAGATATGCTATCTCAAGACACAC  
 CATCCCACGCCATGCCACCTCAAGACATACCTTCCCAAGATATGCTATCCCAAGCTCTATCAGCGCATGC  
 CATATTACCTGAAGCCTCAACATCCCATATTGTGCAAGTTCCTGAAATACAACACCTACTTCAGCAGGCC  
 CCAGATCTTCAACCAGAAAACACTGAACCTCAAAAACAGCAAATTTTACAATGTCATATCAAGATATTA  
 GATCAGAAGTTATGGAAGAGACCAAAGAATGGAATCTGAGGAGGAACTCCATAGAAGAAAATCCTCAAG  
 ACGGCATTCTTAAACCAGCAAACCAAAGCCTTGAATACTTAAGGAGACATTCTTTAGACGTGCAAGCC  
 AAAGGCCAGAAATCCTCAAAGAGGCATTCTTAGATCAGCAAAGCAAAGGCTGGCAATCTCCAAAGCAGA  
 AATCCTTAGACCAGCAAATCAAAGACTGGCTATCCCAAAGAGGCACTCCGTAGATAAGCAAGCTCAACT  
 TAATCAAACCTAAAGAGCAAATCCCAGATCAGCAAGCTGAAGATCAGCAAGCCAAAGGGGAACAATACCCA  
 GAAGGACAATCTAAAGATGGACAAGTTAAAGACCAGCAGACTGATAAGGAGCAAACCTCAAAGAAGCAA  
 CCCAGGATCAGCAAACCTGAAGACCAGCCGCCCAAGAGAAGAAAATCCCGAAAGGACAATTCCAAATGT  
 TCAAGCCGAAGGACAGCAAGCTCAGGTGGAGAAAAGTGCCAAAACCTGTTATGCCAAGATTCAGAATCCCAA  
 ATACAGCAATACCAATTCTGGCAATTCACAAAGGCAATCTCCAGGCTGGACAACCCAGGACTGTCAATC  
 TTTTGGCCAAGAATCCCCTGACTGGA

**ACGCGT**ACGCGGCCGCTCGAG - GFP Tag - GTTTAA

**Protein Sequence:** >RG221997 representing NM\_001079692  
 Red=Cloning site Green=Tags(s)

```

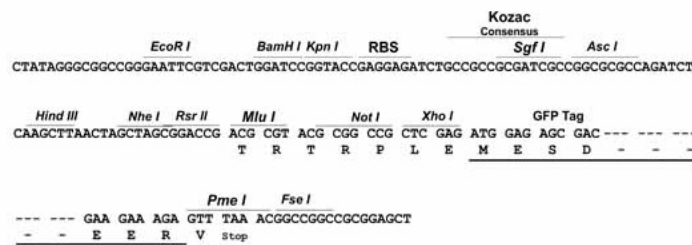
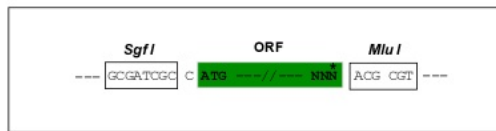
MESTSQDRRATHVITIKPNETVLTAFPYRPHSSLLDFLKGEPRVLGATQILLALIIVGFGTIFALNYIGF
SQRLPLVVLTYFPFGALIGQGVTGMNVISSLVAITGITFTILSYRHQDKYQMPSFEEICVFSRTLFIIV
LFFLPSDVTQNSEQPAPEENDQLQFVLQEFSDDSTTNAQSVIFGGYAFFKLTLSRSPLVSQPGNKGRE
FVPDEQKQSILPSPKFSEEEIEPLPPTLEKKPSENMSIQLDSTFKQMKDEDLQSAIVQPSQMOTKLLQDQ
AASLQVFPSPHSALKLEDISPEDLPSQALPVEGLSEQTMPSKSTSSHVKQSSNLTANDLPPQGILSQTSS
QDMLFHDMTSQDMQSLDMLSQDTPSHAMPPQDIPSDMLSQALSAAHAILPEASTSHIVQFPFPIQHLLQQP
PDLQPENTEPQNQQILQMSYQDIRSEVMEETKEWKSEEELHRRKSSRRHSLNQTKALQYLRRHSLDVQA
KGQKSSKRHSLDQQSKGWQSPKQKSLDQQIKDWLSPKRHSVDKQAQLNQTKQLPDQQAEDQQAQGEQYP
EGQSKDGQVKDQQTDKQNSKKQTDQDQDQEDQPAQEKSPKGQFQNVQAEQQQAQVEKVPKLLCQDSESQ
IQQYQFWQFHKGNLQAGQPRTVNLLAKNPLTG
  
```

TRTRPLE - GFP Tag - V

**Restriction Sites:** SgfI-MluI

**Cloning Scheme:**

Cloning sites used for ORF Shuttling:



**ACCN:** NM\_001079692

**ORF Size:** 1986 bp

**OTI Disclaimer:** The molecular sequence of this clone aligns with the gene accession number as a point of reference only. However, individual transcript sequences of the same gene can differ through naturally occurring variations (e.g. polymorphisms), each with its own valid existence. This clone is substantially in agreement with the reference, but a complete review of all prevailing variants is recommended prior to use. [More info](#)

**OTI Annotation:** This clone was engineered to express the complete ORF with an expression tag. Expression varies depending on the nature of the gene.

**Components:** The ORF clone is ion-exchange column purified and shipped in a 2D barcoded Matrix tube containing 10ug of transfection-ready, dried plasmid DNA (reconstitute with 100 ul of water).

**Reconstitution Method:**

1. Centrifuge at 5,000xg for 5min.
2. Carefully open the tube and add 100ul of sterile water to dissolve the DNA.
3. Close the tube and incubate for 10 minutes at room temperature.
4. Briefly vortex the tube and then do a quick spin (less than 5000xg) to concentrate the liquid at the bottom.
5. Store the suspended plasmid at -20°C. The DNA is stable for at least one year from date of shipping when stored at -20°C.

**RefSeq:** [NM\\_001079692.3](#)

**RefSeq Size:** 3302 bp

**RefSeq ORF:** 1989 bp

**Locus ID:** 84689

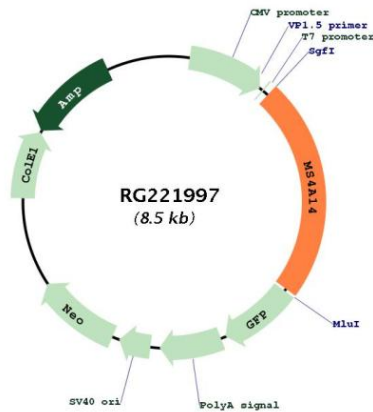
**UniProt ID:** [Q96JA4](#)

**Cytogenetics:** 11q12.2

**Protein Families:** Transmembrane

**Gene Summary:** May be involved in signal transduction as a component of a multimeric receptor complex. [UniProtKB/Swiss-Prot Function]

**Product images:**



Circular map for RG221997