

Product datasheet for **RG221996**

Repulsive Guidance Molecule A (RGMA) (NM_020211) Human Tagged ORF Clone

Product data:

Product Type:	Expression Plasmids
Product Name:	Repulsive Guidance Molecule A (RGMA) (NM_020211) Human Tagged ORF Clone
Tag:	TurboGFP
Symbol:	Repulsive Guidance Molecule A
Synonyms:	RGM
Mammalian Cell Selection:	Neomycin
Vector:	pCMV6-AC-GFP (PS100010)
E. coli Selection:	Ampicillin (100 ug/mL)



[View online »](#)

ORF Nucleotide Sequence:

>RG221996 representing NM_020211
 Red=Cloning site Blue=ORF Green=Tags(s)

TTTTGTAATACGACTCACTATAGGGCGGCCGGGAATTCGTCGACTGGATCCGGTACCGAGGAGATCTGCC
 GCC**CGGATCGCC**

ATGCAGCCGCCAAGGGAGAGGCTAGTGGTAACAGGCCAGCTGGATGGATGGGTATGGGGAGAGGGGCAG
 GACGTTACAGCCCTGGGATTCTGGCCGACCTCGCCTTCCTTCTCTGCAGCTTCCCCGAGCCACCTCCCC
 GTGCAAGATCCTCAAGTCAACTCTGAGTTCTGGAGCGCCACGTCGGGCAGCCACGCCCCAGCCTCAGAC
 GACACCCCGAGTTCTGTGCAGCCTTGCAGCTACGCCCTGTGCACGGCGGACGGCCCGCACCTGCC
 GGGGTGACCTGGCTACCACTCGGCCGTCCATGGCATAGAGGACCTCATGAGCCAGCACAACTGCTCCAA
 GGATGGCCCCACCTCGCAGCCACGCTGCGCACGCTCCCACCGCCGGAGACAGCCAGGAGCGCTCGGAC
 AGCCCCGAGATCTGCCATTACGAGAAGAGCTTTCACAAGCACTCGGCCACCCCAACTACACGCACTGTG
 GCCTCTTCGGGGACCCACACCTCAGGACTTTCACCGACCGCTCCAGACCTGCAAGGTGCAGGGCGCCTG
 GCCGCTCATCGACAATAATTACCTGAACGTGCAGGCCACCAACAGCCTGTGCTGCCCGGCTCAGCGGCC
 ACTGCCACCAGCAAGCTACCATCATCTCAAGAACTTCCAGGAGTGTGTGGACCAGAAGGTGTACCAGG
 CTGAGATGGACGAGCTCCCGGCCCTTCGTGGATGGCTCTAAGAACGGTGGGGACAAGCACGGGGCCAA
 CAGCCTGAAGTCACTGAGAAGGTGTCAGGCCAGCACGTGGAGATCCAGGCCAAGTACATCGGCACCACC
 ATCGTGGTGCGCCAGGTGGGCCGCTACCTGACCTTTGCCGTCCGCATGCCAGAGGAAGTGGTCAATGCTG
 TGGAGGACTGGGACAGCCAGGGTCTCTACCTCTGCCTGCGGGGCTGCCCCCTCAACCAGCAGATCGACTT
 CCAGGCCCTCCACACCAATGCTGAGGGCACCGGTGCCCGCAGGCTGGCAGCCGCCAGCCCTGCACCCACA
 GCCCCCGAGACCTTCCATACGAGACAGCCGTGGCCAAGTGAAGGAGAAGCTGCCGTTGGAGGACCTGT
 ACTACCGGCTGCGTCTTCGACCTCTCACACGGGCGACGTGAACCTCACACTGGCCGCTACTACGC
 GTTGGAGGATGTCAAGATGCTCCACTCCAACAAAGACAAACTGCACCTGTATGAGAGGACTCGGGACCTG
 CCAGGCAGGGCGGCTGCGGGGCTGCCCTGGCCCCCGGCCCTCCTGGGCGCCCTCGTCCCGCTCCTGG
 CCTGCTCCCTGTGTTCTGC

AG**CGGACCG**ACGCGTACGCGGCCGCTCGAG – GFP Tag – GTTTAA

Protein Sequence:

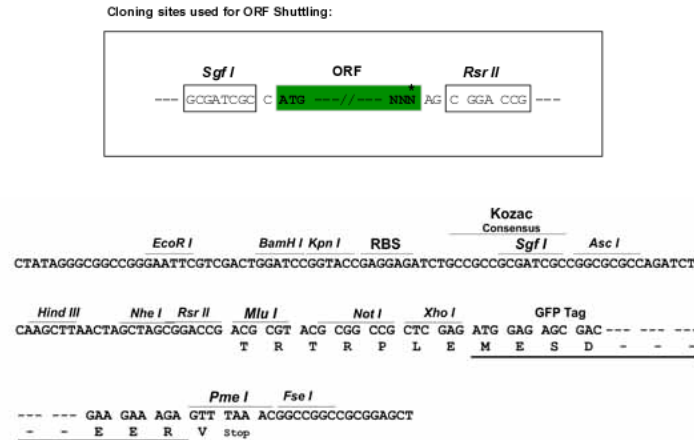
>RG221996 representing NM_020211
 Red=Cloning site Green=Tags(s)

MQPPRERLVVTGRAGWMGMGRGAGRSALGFWPTLAFLLCSFPAATSPCKILKCNSEFWATS GSHAPASD
 DTPEFCAALRSYALCTRRTARTCRGDLAYHSAVHGIEDLMSQHNSKDGPTSQPRLRTLPPAGDSQERSD
 SPEICHYEKSFHKHSATPNYTHCGLFGDPLRFTDRFQTKVKVQAWPLIDNNYLNVAQATNTPVLPGSAA
 TATSKLTIIFKNFQECVDQKVVYAEMDELPAAFVDGSKNGGDKHGANSKITEKVSQHVETQAKYIGTT
 IVVRQVGRYLTFVVRMPEEVVNAVEDWDSQGLYLCLRGCP LNQQIDFQAFHTNAEGTGARRLAAASPAPT
 APETFPHYETAVAKCKEKLPEVDLYYQACVFDLLTTGDVNF LAAYYALEDVKMLHSNKDKLHLYERTRDL
 PGRAAAGLPLAPRPLL GALVPLLALLPVFC

SGP**TRRRLE** – GFP Tag – V

Restriction Sites:

Sgfl-RsrII

Cloning Scheme:


ACCN: NM_020211

ORF Size: 1350 bp

OTI Disclaimer: The molecular sequence of this clone aligns with the gene accession number as a point of reference only. However, individual transcript sequences of the same gene can differ through naturally occurring variations (e.g. polymorphisms), each with its own valid existence. This clone is substantially in agreement with the reference, but a complete review of all prevailing variants is recommended prior to use. [More info](#)

OTI Annotation: This clone was engineered to express the complete ORF with an expression tag. Expression varies depending on the nature of the gene.

Components: The ORF clone is ion-exchange column purified and shipped in a 2D barcoded Matrix tube containing 10ug of transfection-ready, dried plasmid DNA (reconstitute with 100 ul of water).

Reconstitution Method:

1. Centrifuge at 5,000xg for 5min.
2. Carefully open the tube and add 100ul of sterile water to dissolve the DNA.
3. Close the tube and incubate for 10 minutes at room temperature.
4. Briefly vortex the tube and then do a quick spin (less than 5000xg) to concentrate the liquid at the bottom.
5. Store the suspended plasmid at -20°C. The DNA is stable for at least one year from date of shipping when stored at -20°C.

RefSeq: [NM_020211.1](#), [NP_064596.1](#)

RefSeq Size: 3216 bp

RefSeq ORF: 1353 bp

Locus ID: 56963

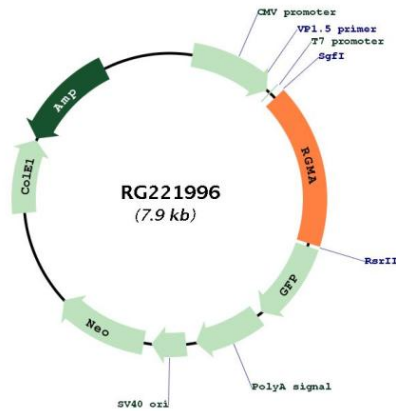
UniProt ID: [Q96B86](#)

Cytogenetics: 15q26.1

Gene Summary:

This gene encodes a member of the repulsive guidance molecule family. The encoded protein is a glycosylphosphatidylinositol-anchored glycoprotein that functions as an axon guidance protein in the developing and adult central nervous system. This protein may also function as a tumor suppressor in some cancers. Alternate splicing results in multiple transcript variants. [provided by RefSeq, Oct 2009]

Product images:



Circular map for RG221996