

## Product datasheet for **RG221994**

### SLC25A45 (NM\_182556) Human Tagged ORF Clone

#### Product data:

Product Type: Expression Plasmids  
Product Name: SLC25A45 (NM\_182556) Human Tagged ORF Clone  
Tag: TurboGFP  
Symbol: SLC25A45  
Mammalian Cell Selection: Neomycin  
Vector: pCMV6-AC-GFP (PS100010)  
E. coli Selection: Ampicillin (100 ug/mL)  
ORF Nucleotide Sequence: >RG221994 representing NM\_182556  
Red=Cloning site Blue=ORF Green=Tags(s)

TTTTGTAATACGACTCACTATAGGGCGGCCGGAATTCGTCGACTGGATCCGGTACCGAGGAGATCTGCC  
GCC**CGATCGCC**

ATGCCGGTGGAGGAATTTGTGGCTGGCTGGATCTCTGGCGCTCTGGGCTTGGTCCTGGGACACCCGTTTTG  
ACACTGTAAGCTCCTGGGCTTCTTCAAGGGAATGAGCTTCCCCATTGCCAGCATAGCTGTGGTCAACTC  
TGTCTGTTTGGGGTCTATAGCAACACCCTGCTGGTGTACACGGCCACCTCCCACCAGGAGCGGCGGGCC  
CAGCCGCCAGCTACATGCACATCTTCTAGCGGGCTGCACCGGGGGTTCTGCAGGCCTACTGTCTGG  
CTCCTTTTGACCTCATCAAAGTCCGGCTACAAAACCAGACAGAGCCAAGGGCCAGCCAGGGAGCCCCCC  
ACCCCGGTACCAGGGGCCGCTGCAGCTGTGCAGCCTCCATCTTCCGGGAGGAGGGGCCCGGGGGCTGTTT  
CGAGGAGCCTGGGCCCTGACGCTGAGGGACACCCACGGTGGGGATCTACTTCATCACCTATGAAGGGC  
TCTGTGCGCAGTACACACCAGAAGGCCAGAATCCAGCTCAGCCACGGTGTGGTGGCAGGGGGGCTTTG  
CAGGCATTGCTTCTGGGTGGCAGCCACGCCCTTAGACGTGATCAAGTCCCGGATGCAGATGGATGGACT  
GAGACGCAGAGTGTACCAGGGGATGCTGGACTGCATGGTGTGAGCAGCATCCGGCAGGAAGGACTGGGAGTC  
TTCTTCCGGGGGTACCATCAACAGTCCCGCGCCTTTCCCGTCAATGTGTACCTTCTCAGCTACG  
AATATCTCCTCCGCTGGTGGGGATGAGCCCTGCGGCAATGCCAGCAGCTCCCCATCAGGCCACGGCCTG  
GAGGCCAGTTTGTAGATTGAGGGCAGGTTGAAAGCTTGCAAATCAGTGCAAGAGGCTCAGCCCTTCTTAA  
CCAAGGTCCCTCCACCCGCGCAGATCTGGGCTGGCAGACACCTGTGGGAGCCGGAAGCCGGGGGCTG  
TGCAGCCTCCCTGTGTAGCTGGCCT

**ACGCGT**ACGCGGCCGCTCGAG - GFP Tag - GTTTAA



[View online »](#)

**Protein Sequence:** >RG221994 representing NM\_182556  
Red=Cloning site Green=Tags(s)

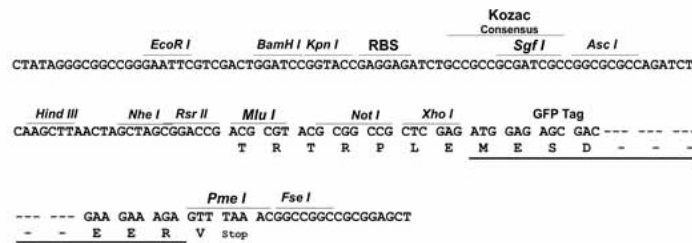
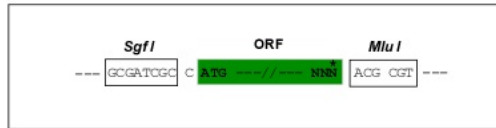
MPVEEFVAGWISGALGLVLGHPFDTVKLLGFFKGMSPFPIASIAVNSVLFVGVSNLLVLTATSHQERRA  
 QPPSYMHIFLAGCTGGFLQAYCLAPFDLIKVRLQNQTEPRAQPGSPPPRYQGPVHCAASIFREEGPRGLF  
 RGAWALTLRDTPTVGIYFITYEGLCRQYTPAQNPSSATVLVAGGLCRHCFLLGSHALRRDQVPDADGWT  
 ETQSVPGDAGLHGEQHPAGRTGSLLLPGHHQPCPRLSRQCCHLPQLRISPPLVGMSPAAMPAAPHQAHGL  
 EASLRLEARLKACKSVQEAQPFLTKVPPTRADLGWADTCGSRKPGACAASLCSWP

TRTRPLE - GFP Tag - V

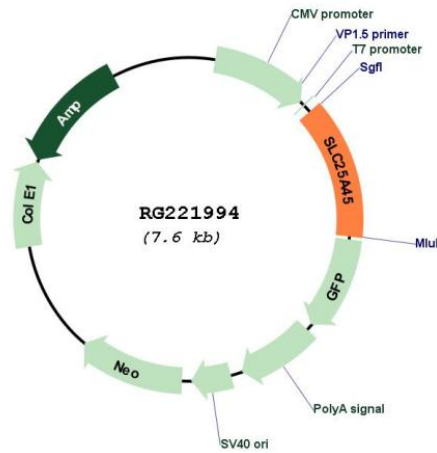
**Restriction Sites:** SgfI-MluI

**Cloning Scheme:**

Cloning sites used for ORF Shutting:



**Plasmid Map:**



**ACCN:** NM\_182556

**ORF Size:** 1005 bp

<b>OTI Disclaimer:</b>	The molecular sequence of this clone aligns with the gene accession number as a point of reference only. However, individual transcript sequences of the same gene can differ through naturally occurring variations (e.g. polymorphisms), each with its own valid existence. This clone is substantially in agreement with the reference, but a complete review of all prevailing variants is recommended prior to use. <a href="#">More info</a>
<b>OTI Annotation:</b>	This clone was engineered to express the complete ORF with an expression tag. Expression varies depending on the nature of the gene.
<b>Components:</b>	The ORF clone is ion-exchange column purified and shipped in a 2D barcoded Matrix tube containing 10ug of transfection-ready, dried plasmid DNA (reconstitute with 100 ul of water).
<b>Reconstitution Method:</b>	<ol style="list-style-type: none"><li>1. Centrifuge at 5,000xg for 5min.</li><li>2. Carefully open the tube and add 100ul of sterile water to dissolve the DNA.</li><li>3. Close the tube and incubate for 10 minutes at room temperature.</li><li>4. Briefly vortex the tube and then do a quick spin (less than 5000xg) to concentrate the liquid at the bottom.</li><li>5. Store the suspended plasmid at -20°C. The DNA is stable for at least one year from date of shipping when stored at -20°C.</li></ol>
<b>RefSeq:</b>	<a href="#">NM_182556.1</a> , <a href="#">NP_872362.1</a>
<b>RefSeq Size:</b>	2539 bp
<b>RefSeq ORF:</b>	867 bp
<b>Locus ID:</b>	283130
<b>UniProt ID:</b>	<a href="#">Q8N413</a>
<b>Cytogenetics:</b>	11q13.1
<b>Protein Families:</b>	Druggable Genome, Transmembrane
<b>Gene Summary:</b>	SLC25A45 belongs to the SLC25 family of mitochondrial carrier proteins (Haitina et al., 2006 [PubMed 16949250]).[supplied by OMIM, Mar 2008]