

Product datasheet for **RG221989**

GPR107 (NM_020960) Human Tagged ORF Clone

Product data:

Product Type:	Expression Plasmids
Product Name:	GPR107 (NM_020960) Human Tagged ORF Clone
Tag:	TurboGFP
Symbol:	GPR107
Synonyms:	bA138E2.2; GCDRP; LUSTR1
Mammalian Cell Selection:	Neomycin
Vector:	pCMV6-AC-GFP (PS100010)
E. coli Selection:	Ampicillin (100 ug/mL)



[View online »](#)

ORF Nucleotide Sequence:

>RG221989 representing NM_020960
 Red=Cloning site Blue=ORF Green=Tags(s)

TTTTGTAATACGACTCACTATAGGGCGGCCGGAATTCGTCGACTGGATCCGGTACCGAGGAGATCTGCC
 GCC**CGCATCGCC**

ATGGCCGCTCTGGCGCCCGTCGGCTCCCCGCCTCCCGCGGTCTAGGCTGGCCGCGGCCCTCCGGCTGC
 TCCAATGCTGGGTTTGCTGCAGTTGCTGGCCGAGCCTGGCCTGGCCGCGGTCCATCACCTGGCACTCAA
 GGATGATGTGAGGCATAAAGTTCATCTGAACACCTTTGGCTTCTTCAAGGATGGGTACATGGTGGTGAAT
 GTCAGTAGCCTCTCACTGAATGAGCCTGAAGACAAGGATGTGACTATTGGATTTAGCCTAGACCGTACAA
 AGAATGATGGCTTTTCTTCTTACCTGGATGAAGATGTGAATTACTGTATTTAAAGAAACAGTCTGTCTC
 TGTACCCTTTTAAATCCTAGACATCTCCAGAAGTGAGGTAAGAGTAAAGTCTCCACCAGAAGCTGGTACC
 CAGTTACCAAAGATCATCTTCAGCAGGGATGAGAAAGTCTTGGTCAGAGCCAGGAGCCTAATGTTAAC
 CTGCTTCAGCAGGCAACCAGACCCAGAAGACACAAGATGGTGGAAAGTCTAAAAGAAGTACAGTGGATTC
 AAAGCCATGGGAGAGAAATCCTTTTCTGTTTATAATAATGGTGGGCAGTGTCAATTCAGTTTTTCTTT
 AACATCAGCACTGATGACCAAGAAGGCCTTTACAGTCTTTATTTTCATAAATGCCTTGGAAAAGAATTGC
 CAAGTGACAAGTTTACATTCAGCCTTGATATTGAGATCACAGAGAAGAATCCTGACAGCTACCTCTCAGC
 AGGAGAAATTCCTCTCCCAAATATACATCTCAATGGCCTTTTCTTCTTTCTTCTGGGACCATCTGG
 ATTCATATCCTTCGAAAACGACGGAAATGATGTATTTAAATCCACTGGCTGATGGCGGCCCTTCCTTTCA
 CCAAGTCTCTTCTTGGTGTCCATGCAATTGACTACCACTACATCTCCTCCAGGGCTTCCCTATCGA
 AGGCTGGGCTGTGTGTACTACATAACTCACCTTTTGAAGGGGGCGTACTTTCATCACCATTGCACTC
 ATTGGCACTGGCTGGGCTTTTATTAAGCACATCTTTCTGATAAAGACAAAAAGATCTTCATGATTGTCA
 TTCCACTCCAGGCTGGCAAATGTAGCCTACATCATAGAGTCCACCGAGGAGGCGCAGCATGATGATA
 TGGCTTGTGGAAGGACTCTCTATTTCTGGTCGACCTGTTGTGTTGTGGTGCCATCCTCTTCCAGTGGTG
 TGGTCAATCAGACATTTACAAGAAGCATCAGCAACAGATGGAAAAGCTGCTATTAACCTAGCAAAGCTGA
 AACTTTTCAGACATTATTACGTCTTGATTGTGTGTACATATACTTCACTAGGATCATTGCATTTCTCCT
 CAAACTCGCTGTTCCATTCCAGTGGAAAGTGGCTCTACCAGCTCCTGGATGAAACGGCCACACTGGTCTTC
 TTTGTTCTAACGGGGTATAAATTCGGTCCGGCTTCCAGATAACCCCTACCTACAACCTTCTCAGGAAGAAG
 AAGACTTGAAAATGGAGTCCGTTGTGACAACATCTGGGGTATGAAAGTATGAAGAAAGTCAAGAAGGT
 GACCAACGGCTCCGTGGAGCCCCAGGGCGAGTGGGAAGGCCCGTG

ACGCGTACGCGGCCGCTCGAG - GFP Tag - GTTTAA

Protein Sequence:

>RG221989 representing NM_020960
 Red=Cloning site Green=Tags(s)

MAALAPVGSPASRGPRLAAGLRLPMLGLLQLLAEPGLGRVHHLALKDDVRHKVHLNTFGFFKDGMYMVN
 VSSLNLNPEDEKDVITIGFSLDRTKNDGSSYLDEEDVNYCILKKQSVSVTLILLIDISRSEVRVKSPPEAGT
 QLPKIIIFSRDEKVLGQSQEPNVNPASAGNQTQKTQDGGKSKRSTVDSKAMGEKFSVHNNGGAVSFQFFF
 NISTDDQEGLYSLYFHKCLGKELPSDKFTFSLDIEITEKNPDSYLSAGEIPLPKLYISMAFFFLSGTIW
 IHILRKRNDVFKIHWLMAALPFTKSLSLVFHAIDYHYISSQGFPIEGWAVVYIITHLLKGALLFITIAL
 IGTGWAFIKHILSDKDKKIFMIVIPLQVLANVAYIIESTEEGTTEYGLWKDSLFLVDLLCCGAILFPVV
 WSIRHLQEASATDGKAAINLAKLKLFRHYVYLIVCYIYFTRIIAFLKLAVPFQWKWLYQLLDETATLVF
 FVLTYGKFRPASDNPYLQLSQEEEDLEMESVVTTSVGMESMKKVKVTNGSVPEQGEWEGAV

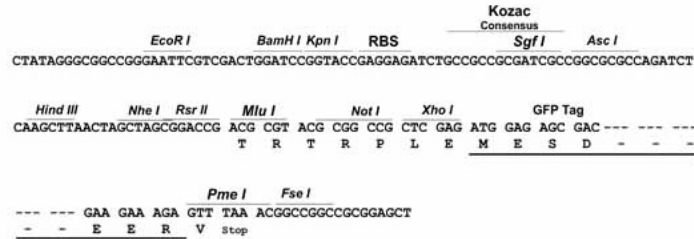
TRTRPLE - GFP Tag - V

Restriction Sites:

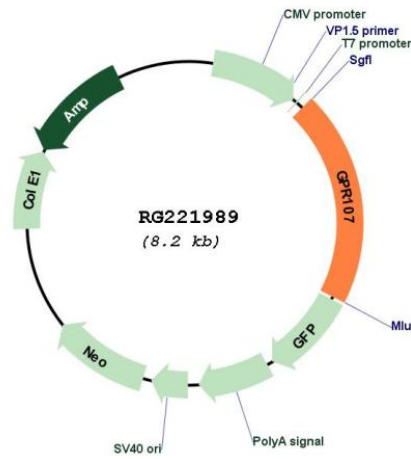
Sgfl-MluI

Cloning Scheme:

Cloning sites used for ORF Shutting:



Plasmid Map:



ACCN:	NM_020960
ORF Size:	1656 bp
OTI Disclaimer:	The molecular sequence of this clone aligns with the gene accession number as a point of reference only. However, individual transcript sequences of the same gene can differ through naturally occurring variations (e.g. polymorphisms), each with its own valid existence. This clone is substantially in agreement with the reference, but a complete review of all prevailing variants is recommended prior to use. More info
OTI Annotation:	This clone was engineered to express the complete ORF with an expression tag. Expression varies depending on the nature of the gene.
Components:	The ORF clone is ion-exchange column purified and shipped in a 2D barcoded Matrix tube containing 10ug of transfection-ready, dried plasmid DNA (reconstitute with 100 ul of water).
Reconstitution Method:	<ol style="list-style-type: none">1. Centrifuge at 5,000xg for 5min.2. Carefully open the tube and add 100ul of sterile water to dissolve the DNA.3. Close the tube and incubate for 10 minutes at room temperature.4. Briefly vortex the tube and then do a quick spin (less than 5000xg) to concentrate the liquid at the bottom.5. Store the suspended plasmid at -20°C. The DNA is stable for at least one year from date of shipping when stored at -20°C.
RefSeq:	NM_020960.5
RefSeq Size:	2686 bp
RefSeq ORF:	1659 bp
Locus ID:	57720
UniProt ID:	Q5VW38
Cytogenetics:	9q34.11
Protein Families:	Druggable Genome, Transmembrane
Gene Summary:	Has been proposed to act as a receptor for neuronostatin, a peptide derived from the somatostatin/SST precursor (PubMed:22933024). Involved in blood sugar regulation through the induction of glucagon in response to low glucose (By similarity).[UniProtKB/Swiss-Prot Function]