

## Product datasheet for **RG221979**

### Contactin 3 (CNTN3) (NM\_020872) Human Tagged ORF Clone

#### Product data:

Product Type:	Expression Plasmids
Product Name:	Contactin 3 (CNTN3) (NM_020872) Human Tagged ORF Clone
Tag:	TurboGFP
Symbol:	Contactin 3
Synonyms:	BIG-1; PANG; PCS
Mammalian Cell Selection:	Neomycin
Vector:	pCMV6-AC-GFP (PS100010)
E. coli Selection:	Ampicillin (100 ug/mL)
ORF Nucleotide Sequence:	>RG221979 representing NM_020872 Red=Cloning site Blue=ORF Green=Tags(s)

TTTTGTAATACGACTCACTATAGGGCGGCCGGAATTCGTCGACTGGATCCGGTACCGAGGAGATCTGCC  
GCC**CGATCGCC**

ATGATGTTTCCATGGAACAGTTGATCCTGCTTTCATTTCATTGGCTGCTTAGGAGGTGAGCTTCTCTTAC  
AAGGCCCTGTATTTATCAAAGAACCAGCAACAGCATTTCCTGTTGGTTCAGAAGATAAAAAATAAC  
TTTGCATTGTGAAGCAAGAGGCAATCCATCACCTCATTACAGATGGCAGCTGAATGGAAGTATTTGAT  
ATGAGTATGGAACATCGTTATAAGTTGAATGGAGGAAATCTTGTGGTTATTAATCCCAACAGAAATGGG  
ATACAGGAACTTACCAATGTTTTGCAACAAATTCATTGGAACAATTGTCAGCAGAGAAGCCAACTTCA  
GTTTGCCTATCTTGAAAATTTTAAACCAAATGAGGAGTACAGTGTCTGTGCGTGAAGGCCAGGGAGTT  
GTGCTGCTCTGCGGCCCCACCACACTCTGGAGAACTGTCATATGCTTGGATCTTCAATGAATACCCAT  
CGTTTGTGAAGAAGATAGTCGGAGATTGTCTCCAGGAGACAGGGCACCTCTACATATCTAAGGTGGA  
GCCGTCTGATGTGGGAAATTACACATGTGTGGTGACAAGTATGGTGACAAATGCCCGAGTCTGGGCTCT  
CCAACCTCTTGGTGCTACGTTCTGATGGTGTGATGGGTGAATATGAACCTAAAAAGAAGTTCAGTTTC  
CAGAACTCTCCAGCAGCTAAAGGTCGACTGTGAAATGGAATGTTTTGCCCTTGAAATCCCATAACC  
TCAGATTAATTGGAGAAGAAGTATGGGCTGCCATTTCCAGCAAAATTAATTAAGGAAGTTCAGTGGT  
GTGCTTGAATCCCAACTTCCAACAGGAAGATGCAGGTTCCATGAATGCATTGCTGAGAATTCACGAG  
GAAAAATGTTGCCAGAGGGCTCTCACTACTATGCAAAGCCCATTTGGTTCAACTCATAAAGGATGT  
GGAAATAGCCGTGGAGGACAGTCTTTATTGGGAATGCAGGGCAAGCGGCAAGCCCAAGCCTTCTACCGA  
TGGCTGAAAAATGGAGCAGCCCTGGTGCTAGAGGAGAGAACACAGATAGAAAAATGGTGCCCTTACAATAT  
CAAACCTAAGTGTGACTGATTCTGGCATGTTCCAGTGCATAGCAGAAAACAAACATGGCCTTGTATTTC  
CAGTGCTGAGCTCAAAGTTGTTGCTTCTGCTCCAGATTTTCAAAGAATCCAATGAAGAAGTTGGTTCAG  
GTGCAGGTGGGCAGCCTGGTCAGCTTGGATTGTAACCCAGAGCCTCCCAAGGGCACTCTTCTCTGGA  
AGAAGGGGATGTGAGCGTGCAGGAGCATGAAAGAATTTCTTTGTTAAACGATGGAGGACTCAAAATAGC  
CAATGTGACTAAAGCTGATGCTGGAACCTACACCTGCATGGCAGAAAACAGTTTGGGAAAGCAAATGGC



[View online »](#)

ACAACACATTTGGTTGTTACGGAACCAACAAGAATAA CTTTGGCACCATCTAACATGGATGTTTCTGTTG  
 GTGAAAGCGTCATATTGCCCTGCCAGGTACAACATGACCCGCTGTAGACATCATCTTTACCTGGTATTT  
 CAATGGGGCCCTTG CAGATTTTAAGAAAGATGGATCTCACTTTGAGAAAGTTGGTGGGAGTTCATCTGGT  
 GATTTAATGATCAGAAACATTACAGTGAACACAGTGGGAAATATGTTTGTATGGTGCAAACGGGGTGG  
 ACAGTGTTCATCTGCTGCTGACCTCATAGTAAGAGGTTACCTGGACCACCAGAAAATGTAAGGTAGA  
 TGAATTACAGACACAACAGCCCAACTCTCTGGAAAGAAGGTAAGACAACCATAGCCCAAGTTATATCC  
 TATTCTATCCAGGCTCGACACCTTTCTCCGTGGTTGGCAAACCGTCACAACAGTGCCTGAGGTCATCG  
 ATGGGAAGACGCACACAGCCACTGTAGTTGAGTTAAACCCATGGGTGGAATATGAATTTCCGGTTGTAGC  
 CAGTAACAAAATTGGAGGTGGAGAACCAAGTTTACCCTCAGAAAAAGTAAGAAGTGAAGAGGCAGTTCCA  
 GAAGTGCCTCCTTCTGAAGTCAATGGAGGAGCGGAAGCCGCTGAACTTGTGATAACCTGGGATCCAG  
 TCCCTGAAGAACTACAGAATGGTGAAGTTTTGGGTATGTTGTTGCTTTCCGCCCTTTGGGGTTACCAC  
 CTGGATCCAGACAGTGGTACATCCCCTGACACCCCAAGATATGTCTTTAGGAATGAAAGCATCGTGCCA  
 TATTCACCATATGAAGTTAAAGTGGGTGTTATAAATAACAAGGTGAAGGACATTTAGCCCAAGTGACAA  
 CAGTGTCTCTGCAGAAGAAGAGCCTACAGTGGCCCCATCTCAAGTCTCTGCAAAATAGCCTATCTTCCCT  
 AGAAATTGAGTTTCATGGAACACCATTCTTGAAGTTGAGCAATGGACATTTACTGGGCTATGAGGTG  
 CGGTACTGGAATGGGGTGGAAAGGAGGAATCATCCAGTAAGATGAAAGTGGCAGGAAATGAGACATCAG  
 CCAGACTACGGGGCTGAAGAGCAACCTGGCCTATTACACGGCTGTCCGGGCTTACAACAGTGCCGGCGC  
 TGGGCCTTTTAGCGCCACAGTTAATGTAACCACCAAGAAAACGCCTCCAGTCAGCCACCAGGAAATGTT  
 GTTTGGAATGCCACAGACTAAAGTGTACTTAAATTGGGAGCAAGTTAAAGCCATGGAGAATGAGTCAG  
 AAGTAACAGGATATAAAGTTTTCTATAGGACTAGCAGTCAAAAACCGTACAAGTACTGAACACAAAATA  
 AACTTCAGCTGAACTTGTGCTGCCCATTAAGAGGACTACATTATTGAAGTCAAGGCCACAACAGATGGA  
 GGGGATGGGACCAGTAGTGAACAGATCAGGATTCACGAATAACCAGTATGGATGCAAGAGGATCCACTT  
 CAGCCATCTCGAATGTCCACCCTATGTCAAGTTATATGCCTATAGTACTGTTCTTAAATTGATATATGCTC  
 TGGG

ACGCGTACGCGGCCGCTCGAG - GFP Tag - GTTTAA

**Protein Sequence:**

>RG221979 representing NM\_020872  
 Red=Cloning site Green=Tags(s)

MMFPWKQLILLSFIGLGGELLQGPVFIKEPSNSIFPVGSEDKKITLHCEARGNPSPHYRWQLNGSDID  
 MSMEHRYKLNNGNLVVINPNRNWDTGYQCFATNSLGTIVSREAKLQFAYLENFKTKMRSTVSVREGQGV  
 VLLCGPPPHSGELSYAWIFNEYPSFVEEDSRRFVSQETGHLIYISKVEPSDVGNITCVVTSMTNARVLGS  
 PTPLVLRSDGVMGEYEPKIEVQFPETLPAKGVSTVKLECFALGNPQPINWRRSDGLPFSSKIKLRKFSG  
 VLEIPNFQEDAGSYECIAENSRGNVARGRLTYAKPHWVQLIKDVEIAVEDSLYWECRASGPKPKPSYR  
 WLKNGAALVLEERTQIENGAL TISNLSVTDSGMFQCI AENKHGLVYSSAELKVVASAPDFSKNPMKKLVQ  
 VQVGSLSLDCKPRASPRALSSWKKGDVSVQEHERRISLLNDGGLKIANVTKADAGTYTCMAENQFGKANG  
 TTHLVVTEPTRITLAPSNMDSVSGESVILPCQVQHDPLLDIIFTWYFNGALADFKKDGSHFEKVGSSSSG  
 DLMIRNIQLKHSKGYVCMVQTVGSDVSSAADLIVRGSPGPPENVKVEITDTTAQLSWKEGKDNHSPVIS  
 YSIQARTPFSVQWQTVTTVPEVIDGKTHATVVELNPWVEYEFVAVASNKIGGGPSPLPSEKVRTEEAVP  
 EVPPSEVNGGGSRSELVITWDPVPEELQNGEGFGYVVAFRPLGVTTWIQTVVTSPTDTPRYVFRNESIVP  
 YSPYEVKVGYYNNKGEGPFPVTTVFSAEEPTVAPSQVSANSLSSSEIEVSWNTIPWKL SNGHLLGYEV  
 RYWNNGGKEESSKMKVAGNETSARLRGLKSNLAYTAVRAYNSAGAGPFSATVNVTTKTPPSQPPGNV  
 VWNATDTKVLNWEQVKAMENESEVTGYKVFYRTSSQNNVQVLTNKTSAELVLPKEDYIIEVKATTDG  
 GDGTSSEQIRIPRITSM DARGSTSAINVHPMSSYMPIVLFIVVYLW

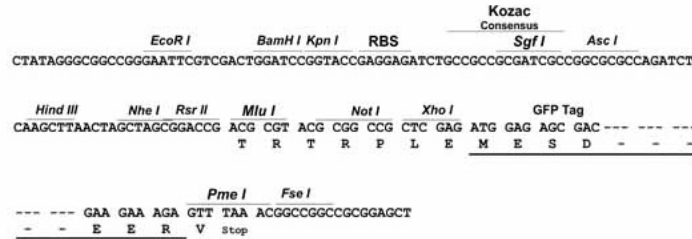
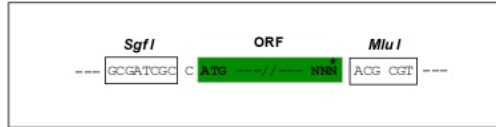
TRTRPLE - GFP Tag - V

**Restriction Sites:**

Sgfl-MluI

**Cloning Scheme:**

Cloning sites used for ORF Shutting:



- ACCN:** NM\_020872
- ORF Size:** 3084 bp
- OTI Disclaimer:** Due to the inherent nature of this plasmid, standard methods to replicate additional amounts of DNA in *E. coli* are highly likely to result in mutations and/or rearrangements. Therefore, OriGene does not guarantee the capability to replicate this plasmid DNA. Additional amounts of DNA can be purchased from OriGene with batch-specific, full-sequence verification at a reduced cost. Please contact our customer care team at [custsupport@origene.com](mailto:custsupport@origene.com) or by calling 301.340.3188 option 3 for pricing and delivery.
- The molecular sequence of this clone aligns with the gene accession number as a point of reference only. However, individual transcript sequences of the same gene can differ through naturally occurring variations (e.g. polymorphisms), each with its own valid existence. This clone is substantially in agreement with the reference, but a complete review of all prevailing variants is recommended prior to use. [More info](#)
- OTI Annotation:** This clone was engineered to express the complete ORF with an expression tag. Expression varies depending on the nature of the gene.
- Components:** The ORF clone is ion-exchange column purified and shipped in a 2D barcoded Matrix tube containing 10ug of transfection-ready, dried plasmid DNA (reconstitute with 100 ul of water).

**Reconstitution Method:**

1. Centrifuge at 5,000xg for 5min.
2. Carefully open the tube and add 100ul of sterile water to dissolve the DNA.
3. Close the tube and incubate for 10 minutes at room temperature.
4. Briefly vortex the tube and then do a quick spin (less than 5000xg) to concentrate the liquid at the bottom.
5. Store the suspended plasmid at -20°C. The DNA is stable for at least one year from date of shipping when stored at -20°C.

**RefSeq:** [NM\\_020872.1](#), [NP\\_065923.1](#)

**RefSeq Size:** 4997 bp

**RefSeq ORF:** 3087 bp

**Locus ID:** 5067

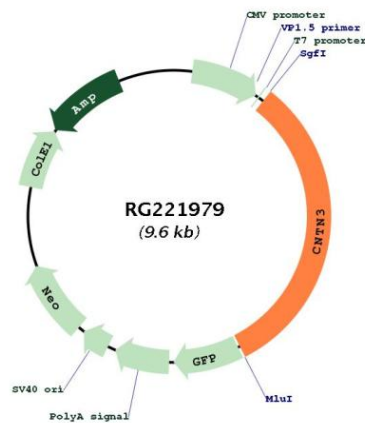
**UniProt ID:** [Q9P232](#)

**Cytogenetics:** 3p12.3

**Protein Families:** Transmembrane

**Gene Summary:** Contactins mediate cell surface interactions during nervous system development. Has some neurite outgrowth-promoting activity (By similarity).[UniProtKB/Swiss-Prot Function]

### Product images:



Circular map for RG221979