

Product datasheet for **RG221977**

Hairless (HR) (NM_018411) Human Tagged ORF Clone

Product data:

Product Type: Expression Plasmids
Product Name: Hairless (HR) (NM_018411) Human Tagged ORF Clone
Tag: TurboGFP
Symbol: HR
Synonyms: ALUNC; AU; HSA277165; HYPT4; MUHH; MUHH1
Mammalian Cell Selection: Neomycin
Vector: pCMV6-AC-GFP (PS100010)
E. coli Selection: Ampicillin (100 ug/mL)
ORF Nucleotide Sequence: >RG221977 representing NM_018411
Red=Cloning site Blue=ORF Green=Tags(s)

TTTTGTAATACGACTCACTATAGGGCGCCGGGAATTCGTCGACTGGATCCGGTACCGAGGAGATCTGCC
 GCCCGATCGCC

ATGGAGAGTACGCCAGCTTCTGAAGGGCACCCCAACCTGGGAGAAGACGGCCCCAGAGAACGGCATCG
TGAGACAGGAGCCCGGCAGCCCGCTCGAGATGGACTGCACCATGGGCCGCTGTGCCTGGGAGAGCTGC
TCCCTTTGGAGGGCGTCTGAGCACCCAGACTCTGGCTTCCCCTGGCTTCCCCAGGGCCCCAAG
GACATGCTCCACTTGTGGAGGGCGAGGCCCCAGAATGGGAGAGGAAGTCAACTGGCTGGGCAGCA
AAGAGGGACTGCGCTGGAAGGAGGCCATGCTTACCCATCCGCTGGCATTCTGCGGGCCAGCGTGCCACC
TCGCTGTGGCCCCCTGATGCCTGAGCATAGTGGTGGCCATCTCAAGAGTGACCCTGTGGCCTCCGGCCC
TGGCACTGCCCTTCTTCTGGAGACCAAGATCCTGGAGCGAGCTCCCTTCTGGGTGCCACCTGCTTGC
CACCTACCTAGTGTCTGGCCTGCCCCAGAGCATCCATGTGACTGGCCCTGACCCCGCACCCCTGGGT
ATACTCCGGGGCCAGCCCAAAGTGCCCTCTGCCTTACGCTTAGGCAGCAAGGGCTTTACTACAAGGAT
CCGAGCATTCCCAGGTTGGCAAAGGAGCCCTTGGCAGCTGCGGAACCTGGGTTGTTTGGCTTAAACTCTG
GTGGGCACCTGCAGAGAGCCGGGAGGCCGAACGCCCTTCACTGCACCAGAGGGATGGAGAGATGGGAGC
TGGCCGGCAGCAGAATCCTTGCCCGCTCTTCTGGGCGAGCCAGACACTGTGCCCTGGACCTCCTGGCCC
GCTTGTCCCCAGGCCTTGTTCATACTTGGCAACGCTGGGCTGGGCCAGGCGATGGGAACCTTGGGT
ACCAGCTGGGGCCACCAGCAACACCAAGGTGCCCTCTCCTGAGCCGCTGTACCCAGCGGGGCTGCTG
TTCATCTACCCACCACTAAAGGTGGGGTCTTGGCCCTTGTGGGAAGTGCCAGGAGGGCTGGAGGGG
GGTGCCAGTGGAGCCAGCAACCCAGCGAGGAAGTGAACAAGGCCTTGGCCCCAGGGCCTGTCCCCCA
GCCACCACCAAGCTGAAGAAGACATGGCTCACACGGCACTCGGAGCAGTTTGAATGTCCACGGGCTG
CCCTGAGTTCGAGGAGAGGCCGTTGCTCGGCTCCGGCCCTCAAAGGGCAGGCAGCCCCGAGGTCCAG
GGAGCAATGGGCAGTCCAGCCCCAAGCGGCCACCGACCCTTTCCAGGCACTGCAGAACAGGGGGCTG
GGGTTGGCAGGAGGTGCGGGACACATCGATAGGGAACAAGGATGTGGACTCGGGACAGCATGATGAGCA
GAAAGGACCCCAAGATGGCCAGGCCAGTCTCCAGGACCCGGACTTCAGGACATACCATGCCTGGCTCTC



[View online »](#)

```
CCTGCAAACCTGGCTCAATGCCAAAGTTGTGCCAGGCAGCTGGAGAGGGAGGAGGGCACGCCTGCCACT
CTCAGCAAGTGC GGAGATCGCCTCTGGGAGGGGAGCTGCAGCAGGAGGAAGACACAGCCACCAACTCCAG
CTCTGAGGAAGGCCAGGGTCCGGCCCTGACAGCCGGCTCAGCACAGGCCTCGCCAAGCACCTGCTCAGT
GGTTTGGGGGACCAGCTGTGCCGCTGTGCGGAGGGAGCGGGAGGCCCTGGCTTGGGCCACGGGGAAG
GCCAAGGGCCAGCCGTGACAGAGGACAGCCAGGCATTCCACGCTGCTGCAGCCGTTGCCACCATGGACT
CTTCAACACCCACTGGCGATGTCCCGCTGCAGCCACCGGCTGTGTGGCTGTGGTCTGTGTGGCCAGGC
ACTGGGCGGGCCAGGGAGAAAGCAGGCTTTCAGGAGCAGTCCGCGGAGGAGTGCACGCAGGAGGCCGGG
ACGCTGCCTGTTCCCTGATGCTGACCCAGTTTGTCTCCAGCCAGGCTTGGCAGAGCTGAGCACTGCAAT
GCACCAGGTCTGGTCAAGTTTGTATATCCGGGGCACTGCCCTGCCAAGCTGATGCCCGGTATGGCC
CCCGGGGATGCAGGCCAGCAGAAGGAATCAACACAGAAAACGCCCAACTCCACAACCTTCTGCAATG
GCGACACCCACAGGACCAAGAGCATCAAAGAGGAGACCCCGATTCCGCTGAGACCCAGCAGAGGACCG
TGCTGGCCGAGGGCCCTGCCTTGTCTTCTCTGCGAACTGCTGGCTTCTACCGCGGTCAAACCTGCT
TTGGCCATGAGCGAATACACATGGCCTTCGCCCCGTCCTCCGCCCCTGCCAGTGATGACCGCATCA
CCAACATCTGGACAGCATTATCGCACAGGTGGTGAACGGAAGATCCAGGAGAAAGCCCTGGGGCCGG
GCTTCGAGCTGGCCGGGTCTGCGCAAGGGCTGGGCCTGCCCTCTCTCAGTGGCCCGGCTGCCT
CCCCAGGGGCTTGGCTGTGGTGCAGGAGCCAGCCTTGCCTCGGCTGGTTCACCTCTTCCAGG
AGCACTGGAGGCAGGGCCAGCCTGTGTTGGTGTAGGGATCCAAAGGACATTGCAGGGCAACCTGTGGG
GACAGAAGCTCTTGGGCACTTGGAGGCCAGGTGCAGGCGCTGAGCCCCCTCGGACCTCCCAGCCAGC
AGCCTGGGCAGCACAACATTCTGGGAGGGCTTCTCTGGCTGAGCTTCGCCAAAGTCAGACGAGGGCT
CTGTCTCTCTGCTGCACCGAGCTTGGGGGATGAGGACACCAGCAGGGTGGAGAACCTAGCTGCCAGTCT
GCCACTCCGGAGTACTGCGCCCTCCATGGAAAACCACTGGCTTCTACCTCCCACCGGGCTTGGC
ATGCGCTCTGTGTGGAGGTGGCCGACCTGGTGCATCCTGGTGCATGCCGACACACACTGCCTGCCTG
GCACCGGGCAGACAGAAAGACTTCCCTTTCAGGCTGGACGGGGAGGGCTCTGGTCTCCGGGAGCCAGC
AGCACTGTGTGGCAGTGTTCGGGACAGGACGCCAGCGCATCCGCCCTTCTCCAGATGGTGCAGG
GCCTGGTGCAGCAGTGCAGCTCACTCAGCACTTCTCTCCCTGAGACCTTGCCTCTCTGCTCAGCT
CTGCCACCGAGGCCAGCCTTCCCTGACTGCCACCTGCTTTATGCCAGATGGACTGGGCTGTGTTT
CAAGCAGTGAAGGTGGCCGTGGGACATTACAGGAGGCCAAA
```

ACGCGTACGCGGCCGCTCGAG - GFP Tag - GTTTAA

Protein Sequence:

>RG221977 representing NM_018411
 Red=Cloning site Green=Tags(s)

```
MESTPSFLKGTPTWEKTAPENGI VRQEPGSPPRDGLHHGPLCLGEPAPFWRGVLSTPDSWLPPGFPQGPK
DMLPLVEGEGPQNGERKVNWLGSKEGLRWKEAMLTHPLAFCGPACPPRCGPLMPEHSGGHLKSDPVAFRP
WHCPFLLETKILERAPFWVPTCLPPYLVSGLPPEHPCDWPLTPHPWVYSGGQPKVPSAFSLGSKGFYYKD
PSIPRLAKEPLAAAEPGLFGLNSGGHLQRAGEAERP SLHQRDGEMGAGRQNPCPLFLGQPDTPVWTSWP
ACPPGLVHTLGNVWAGPGDNLGYQLGPPATPRCPSPEPPVTQRGCCSSYPPTKGGGLGPCGKCGLEG
GASGASEPSEEVNKASGPRACPPSHHTKLKKTWLTRHSEQFECPRGCEPEERPVARLRALKRAGSPEVQ
GAMGSPAPKRPPDPFGTAEQAGGQWEVRDTSIGNKDVDSDGQHDEQKGPQDQASLQDPGLQDIPCLAL
PAKLAQCQSCAQAAEGGGHACHSQVRRSPLGGELQEEEDTATNSSSEEGPGSGPDSRLSTGLAKHLLS
GLGDRLCRLRREREALAWAQREGQGPVTEDESPGIPRCCSRCHHGLFNTHWRCPRCSHRLCVACGRVAG
TGRAREKAGFQEQAEECTQEAGHAACSLMLTQFVSSQALAE LSTAMHQVWVKFDIRGHCPQADARVWA
PGDAGQKKESTQKTPPTPQPCNGDTHRTKSIKEETPDSAETPAEDRAGRGLPCPSLCELLASTAVKLC
LGERIHMAFAPVTPALPSDDRITNILD SIIAQVVERKIQEKALGPGLRAGPGLRKGLPLSPVRPRLP
PPGALLWLQEPQPCRRGFHLFQEHWRQGPVLSVGIQRTLQGNLWGTEALGALGGQVALSPLGPPQPS
SLGSTTFWEGFSWPELRPKSDEGSVLLHRLAGDEDTSRVENLAASLPLPEYCALHGKLNLA SYLPPGLA
LRPLEPQLWAA YGVSPHRGHLGTKNLCVEVADLV SILVHADTPLPAWHRAQKDFLSGLDGEGLWSPGSQV
STVWHVFRAQDAQRIRRF LQMVQGLVSTVSVTQHFLSPETSALSAQLCHQGPSLPPDCHLLYAQMDWAVF
QAVKVAVGTLQEA K
```

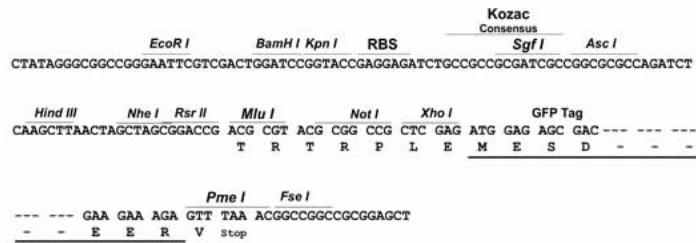
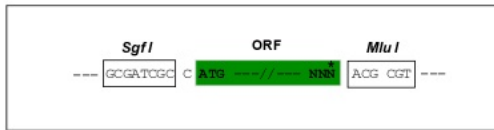
TRTRPLE - GFP Tag - V

Restriction Sites:

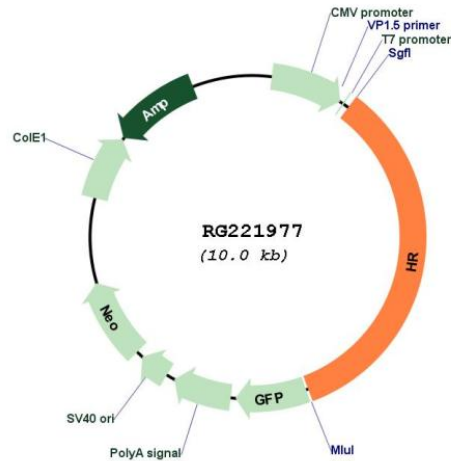
SgfI-MluI

Cloning Scheme:

Cloning sites used for ORF Shuttling:



Plasmid Map:



ACCN: NM_018411

ORF Size: 3402 bp

OTI Disclaimer: The molecular sequence of this clone aligns with the gene accession number as a point of reference only. However, individual transcript sequences of the same gene can differ through naturally occurring variations (e.g. polymorphisms), each with its own valid existence. This clone is substantially in agreement with the reference, but a complete review of all prevailing variants is recommended prior to use. [More info](#)

OTI Annotation: This clone was engineered to express the complete ORF with an expression tag. Expression varies depending on the nature of the gene.

Components: The ORF clone is ion-exchange column purified and shipped in a 2D barcoded Matrix tube containing 10ug of transfection-ready, dried plasmid DNA (reconstitute with 100 ul of water).

Reconstitution Method:

1. Centrifuge at 5,000xg for 5min.
2. Carefully open the tube and add 100ul of sterile water to dissolve the DNA.
3. Close the tube and incubate for 10 minutes at room temperature.
4. Briefly vortex the tube and then do a quick spin (less than 5000xg) to concentrate the liquid at the bottom.
5. Store the suspended plasmid at -20°C. The DNA is stable for at least one year from date of shipping when stored at -20°C.

RefSeq: [NM_018411.4](#), [NP_060881.2](#)

RefSeq Size: 4816 bp

RefSeq ORF: 3405 bp

Locus ID: 55806

UniProt ID: [O43593](#)

Cytogenetics: 8p21.3

Protein Families: Druggable Genome, Transcription Factors

Gene Summary: This gene encodes a protein that is involved in hair growth. This protein functions as a transcriptional corepressor of multiple nuclear receptors, including thyroid hormone receptor, the retinoic acid receptor-related orphan receptors and the vitamin D receptors, and it interacts with histone deacetylases. The translation of this protein is modulated by a regulatory open reading frame (ORF) that exists upstream of the primary ORF. Mutations in this upstream ORF cause Marie Unna hereditary hypotrichosis (MUHH), an autosomal dominant form of genetic hair loss. Mutations in this gene also cause autosomal recessive congenital alopecia and atrichia with papular lesions, other diseases resulting in hair loss. Two transcript variants encoding different isoforms have been found for this gene. [provided by RefSeq, Oct 2014]