

Product datasheet for **RG221966**

DNMT3B (NM_175848) Human Tagged ORF Clone

Product data:

Product Type:	Expression Plasmids
Product Name:	DNMT3B (NM_175848) Human Tagged ORF Clone
Tag:	TurboGFP
Symbol:	DNMT3B
Synonyms:	ICF; ICF1; M.HsallIB
Mammalian Cell Selection:	Neomycin
Vector:	pCMV6-AC-GFP (PS100010)
E. coli Selection:	Ampicillin (100 ug/mL)



[View online »](#)

ORF Nucleotide Sequence:

>RG221966 representing NM_175848
 Red=Cloning site Blue=ORF Green=Tags(s)

TTTTGTAATACGACTCACTATAGGGCGGCCGGGAATTCGTCGACTGGATCCGGTACCGAGGAGATCTGCC
 GCC**CGGATCGCC**

ATGAAGGGAGACACCAGGCATCTCAATGGAGAGGAGGACGCCGGGGAGGGAAGACTCGATCCTCGTCA
 ACGGGGCCTGCAGCGACCAGTCCTCCGACTCGCCCCAACTCTGGAGGCTATCCGCACCCCGGAGATCAG
 AGGCCGAAGATCAAGCTCGGACTCTCCAAGAGGGAGGTGCCAGTCTGCTAAGCTACACACAGGACTTG
 ACAGGCGATGGCGACGGGAAGATGGGGATGGCTCTGACACCCAGTCATGCCAAAGCTCTCCGGGAAA
 CCAGGACTCGTTCAGAAAGCCAGCTGTCCGAACCGAAATAACAACAGTGTCTCCAGCCGGGAGAGGCA
 CAGGCCTCCCCACGTTCCACCCGAGGCCGGCAGGGCCGCAACCATGTGGACGAGTCCCCCGTGGAGTTC
 CCGGCTACCAGGTCCTGAGACGGCGGCAACAGCATCGGCAGGAACGCCATGGCCGTCCCTCCAGCT
 CTTACCTTACCATCGACCTCACAGACGACACAGAGGACACACATGGGACGCCCCAGAGCAGCAGTACCCC
 CTACGCCCGCTAGCCCAGGACAGCCAGCAGGGGGGCATGGAGTCCCGCAGGTGGAGGCAGACAGTGG
 GATGGAGACAGTTCAGAGTATCAGGATGGGAAGGAGTTTGAATAGGGGACCTCGTGTGGGAAAGATCA
 AGGGCTTCTCCTGGTGGCCCGCCATGGTGGTGTCTTGAAGGCCACCTCCAAGCGACAGGCTATGTCTGG
 CATGCGGTGGGTCCAGTGGTTTGGCGATGGCAAGTTCTCCGAGGTCTCTGCAGACAACTGGTGGCACTG
 GGGCTGTTAGCCAGCACTTTAATTTGGCCACCTTCAATAAGCTCGTCTCCTATCGAAAAGCCATGTACC
 ATGCTCTGGAGAAAGCTAGGGTGCAGCTGGCAAGACCTCCCGCAGCCCTGGAGACTCATTGGAGGA
 CCAGCTGAAGCCCATGTTGGAGTGGGCCACGGGGCTTCAAGCCACTGGGATCGAGGGCCCAAACCC
 AACACACGCAACCAGAGAACAAGACTCGAAGACGCACAGCTGACGACTCAGCCACCTCTGACTACTGCC
 CCGCACCAAGCGCCTCAAGACAATGCTATAACAACGGCAAAGACCGAGGGGATGAAGATCAGAGCCG
 AGAACAAATGGCTTCAGATGTTGCCAACAAAGAGCAGCCTGGAAGATGGCTGTTTGTCTTGGCAGG
 AAAAACCCCGTGTCTTCCACCCTCTTTTGGGGGGGCTCTGTGACACATGCCGGGATCGCTTCTTGG
 AGCTGTTTTACATGTATGATGACGATGGCTATCAGTCTTACTGCACTGTGTGCTGCGAGGGCCGAGAGCT
 GCTGCTTTCAGCAACACGAGCTGCTGCCGGTGTCTGTGTGGAGTGCCTGGAGGTGCTGGTGGGCACA
 GGCACAGCGGCCGAGGCCAAGCTTCCAGGACCTGGAGCTGTTACATGTGTCTCCCGCAGCGCTGTCATG
 GCGTCTCGGGCCCGGAAGGACTGGAACGTGCGCCTGCAGGCCCTTCCACCAGTGACACGGGCTTGA
 ATATGAAGCCCCAAGCTGTACCCTGCCATTCCCGCAGCCGAAGGCGGCCCATTCGAGTCTGTCATTG
 TTTGATGGCATCGCGACAGGCTACCTAGTCTCAAAGAGTTGGGCATAAAGGTAGGAAAGTACGTCGCTT
 CTGAAGTGTGTGAGGAGTCCATTGCTGTTGGAACCGTGAAGCAGGAGGGGAATATCAAATACGTGAACGA
 CGTGAGGAACATCACAAAGAAAAATATTGAAGAATGGGGCCCATTTGACTTGGTATTGGCGGAAGCCCA
 TGCAACGATCTCTCAAATGTGAATCCAGCCAGGAAAGGCTGTATGAGGGTACAGGCCGGCTCTTCTTCG
 AATTTTACCACCTGCTGAATTACTCACGCCCAAGGAGGGTGTGACCGGCCGTTCTTCTGGATGTTTGA
 GAATGTTGTAGCCATGAAGTTGGCGACAAGAGGGACATCTCACGGTTCCTGGAGTGAATCCAGTGATG
 ATTGATGCCATCAAAGTTTCTGTGCTCACAGGGCCGATACTTCTGGGGCAACCTACCCGGGATGAACA
 GGCCCGTGATAGCATCAAAGAATGATAAACTCGAGCTGCAGGACTGCTTGAATACAATAGGATAGCCAA
 GTTAAAGAAAGTACAGACAATAACCACCAAGTCGAACTCGATCAAACAGGGGAAAAACCACTTTCCCT
 GTTGTGATGAATGGCAAAGAAGATGTTTTGTGGTGCAGTGCAGCTCGAAAGGATCTTTGGCTTCTGTGC
 ACTACACAGAGCTGTCCAACATGGGCCGTGGTGGCCCGCAGAAGCTGCTGGGAAGTCTGGAGCGTGCC
 TGTGATCCGACACCTCTCGCCCTCTGAAGGACTACTTTGCATGTGAA

ACGGTACGCGGCCGCTCGAG - GFP Tag - GTTTAA

Protein Sequence: >RG221966 representing NM_175848
 Red=Cloning site Green=Tags(s)

```

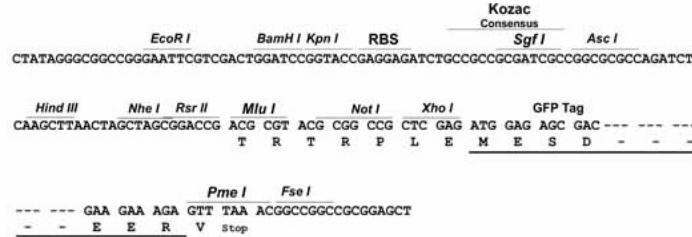
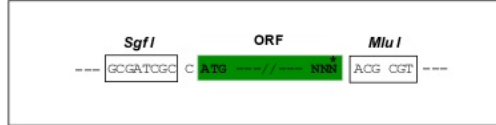
MKGDTRHLNGEEDAGGREDSILVNGACSDQSSDSPPILEAIRTPEIRGRSSRLSKREVSSLLSYTQDL
TGDGDGEDGSDTPVMPKLFRETRTRSESPAVRTRNNNSVSSRERHRPSRSTRGRQGRNHVDESPVEF
PATRSLRRRATASAGTPWSPSSYLIDLTDDTEDTHGTPQSSSTPYARLAQDSQQGGMESQVEADSG
DGDSSSEYQDGKEFGIGDLVWGKIKGFSWWPAMVVSWKATSKRQAMSGMRWVQWFGDGKFSEVSADKLVAL
GLFSQHFNLATFNKLVSYRKAMYHALEKARVRAGKTFPSSPGDSLEDQLKPMLEWAHGGFKPTGIEGLKP
NNTQPENKTRRRATDSATSDYCPAPKRLKTNKYNNKDRGDEDQSRQMASDVANNKSSLEDGCLSCGR
KNPVSFHPLFEGGLCQTCRDRFLELFYMYDDGYSYCTVCCEGRELLCSNTSCCRFCVECLEVLVGT
GTAAEAKLQEPWSCYMCLPQRCHGVLRRRKDWNVRLQAFFTSDTGLEYEAPKLYPAIPAARRRPIRVLSL
FDGIATGYLVKELGIKVGKYVASEVCEEIAVGTVKHEGNIKYVNDVRNITKKNIEEWGPFDLVIGGSP
CNDLSNVNPARKGLYEGTGRLFFEFYHLLNYSRPKEGDDRPFFWMFENVVAMKVGDKRDISRFLECNPVM
IDAIVKSAHRARYFWGNLPGMNRPVIAKNDKLELQDCLEYNRIAKLKKVQITITTKSNSIKQGNQLFP
VVMNGKEDVLWCTELERIFGFPVHYTDVSNMGRGARQKLLGRSWSVPVIRHLFAPLKDYFACE
  
```

TRTRPLE - GFP Tag - V

Restriction Sites: Sgfl-Mlul

Cloning Scheme:

Cloning sites used for ORF Shutting:



- ACCN: NM_175848
- ORF Size: 2499 bp
- OTI Disclaimer: The molecular sequence of this clone aligns with the gene accession number as a point of reference only. However, individual transcript sequences of the same gene can differ through naturally occurring variations (e.g. polymorphisms), each with its own valid existence. This clone is substantially in agreement with the reference, but a complete review of all prevailing variants is recommended prior to use. [More info](#)
- OTI Annotation: This clone was engineered to express the complete ORF with an expression tag. Expression varies depending on the nature of the gene.
- Components: The ORF clone is ion-exchange column purified and shipped in a 2D barcoded Matrix tube containing 10ug of transfection-ready, dried plasmid DNA (reconstitute with 100 ul of water).

Reconstitution Method:

1. Centrifuge at 5,000xg for 5min.
2. Carefully open the tube and add 100ul of sterile water to dissolve the DNA.
3. Close the tube and incubate for 10 minutes at room temperature.
4. Briefly vortex the tube and then do a quick spin (less than 5000xg) to concentrate the liquid at the bottom.
5. Store the suspended plasmid at -20°C. The DNA is stable for at least one year from date of shipping when stored at -20°C.

RefSeq: [NM_175848.2](#)

RefSeq Size: 4293 bp

RefSeq ORF: 2502 bp

Locus ID: 1789

UniProt ID: [Q9UBC3](#)

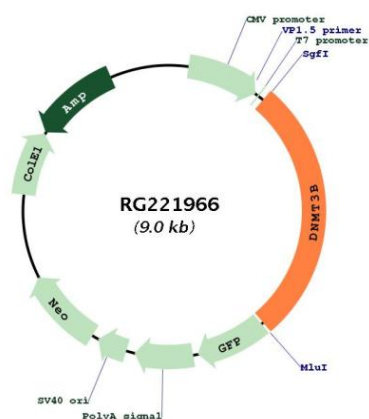
Cytogenetics: 20q11.21

Protein Families: Druggable Genome, Embryonic stem cells, Induced pluripotent stem cells, Stem cell - Pluripotency

Protein Pathways: Cysteine and methionine metabolism, Metabolic pathways

Gene Summary: CpG methylation is an epigenetic modification that is important for embryonic development, imprinting, and X-chromosome inactivation. Studies in mice have demonstrated that DNA methylation is required for mammalian development. This gene encodes a DNA methyltransferase which is thought to function in de novo methylation, rather than maintenance methylation. The protein localizes primarily to the nucleus and its expression is developmentally regulated. Mutations in this gene cause the immunodeficiency-centromeric instability-facial anomalies (ICF) syndrome. Eight alternatively spliced transcript variants have been described. The full length sequences of variants 4 and 5 have not been determined. [provided by RefSeq, May 2011]

Product images:



Circular map for RG221966

