

Product datasheet for **RG221953**

NEK11 (NM_024800) Human Tagged ORF Clone

Product data:

Product Type:	Expression Plasmids
Product Name:	NEK11 (NM_024800) Human Tagged ORF Clone
Tag:	TurboGFP
Symbol:	NEK11
Mammalian Cell Selection:	Neomycin
Vector:	pCMV6-AC-GFP (PS100010)
E. coli Selection:	Ampicillin (100 ug/mL)



[View online »](#)

ORF Nucleotide Sequence:

>RG221953 representing NM_024800
 Red=Cloning site Blue=ORF Green=Tags(s)

TTTTGTAATACGACTCACTATAGGGCGGCCGGAATTCGTCGACTGGATCCGGTACCGAGGAGATCTGCC
 GCC**CGGATCGCC**

ATGCTGAAATCCAAGAGGCAGCTAAGTGTGTGAGTGGATCAACAGCCATTTCCACTTATCCAAAGACCT
 TGATTGCAAGAAGATACGTGCTTCAACAAAACTTGGCAGTGGAAAGTTTTGGAAGTGTCTATCTGGTTTC
 AGACAAGAAAGCCAAACGAGGAGAGGAATTAAGTACTTAAGGAAATATCTGTTGGAGAACTAAATCCA
 AATGAAACTGTACAGGCCAATTTGGAAGCCCACTCCTCTCCAAGCTGGACCACCCAGCCATTGTCAAGT
 TCCATGCAAGTTTTGTGGAGCAAGATAATTTCTGCATTATCACGGAGTACTGTGAGGGCCGAGATCTGGA
 CGATAAAATTCAGGAATATAACAAGCTGGAAAAATCTTCCAGAAAATCAAATAATAGAATGGTTTATC
 CAGCTGCTGCTGGGAGTTGACTACATGCATGAGAGGAGGATACTTCATCGAGACTTAAAGTCAAAGAATG
 TATTTCTGAAAAATAATCTCCTTAAAAATGGAGATTTTGGAGTTTCTCGACTTCTAATGGGATCCTGTGA
 CCTGGCCACAACTTAACTGGAACCTCCCATTATATGAGTCCTGAGGCTCTGAAACACCAAGGCTATGAC
 ACAAAAGTCGGACATCTGGTCACTGGCATGCATTTTGTATGAGATGTGCTGCATGAATCATGCATTGCTG
 GCTCCAATTTCTTATCCATTGTTTTAAAAATGTTGAAGGTGACACACCTTCTCTCCCTGAGAGATATCC
 AAAAGAACTAAATGCCATCATGGAAGCATGTTGAACAAGAATCCTTCATTAAGACCATCTGCTATCGAA
 ATTTTAAAAATCCCTTACCTTGATGAGCAGCTACAGAACCTAATGTGTAGATATTCAGAAATGACTCTGG
 AAGACAAAAATTTGGATTGTGAGAAGGAGGCTGCTCATATAATTAATGCCATGCAAAAAAGGATCCACCT
 GCAGACTCTGAGGGCACTGTGAGAAGTACAGAAAATGACGCCAAGAGAAAGGATGCGGCTGAGGAAGCTC
 CAGGCGGCTGATGAGAAAGCCAGGAAGCTGAAAAAGATTGTGGAAGAAAAATATGAAGAAAAATAGCAAAC
 GAATGCAAGAATTGAGATCTCGGAACCTTTCAGCAGCTGAGTGTGATGTACTCCATGAAAAAACACATTT
 AAAAGGAATGGAAGAAAAGGAGGAGCAACCTGAGGGAAGACTTTCTTGTTCACCCAGGACGAGGATGAA
 GAGAGGTGGCAAGGCAGGGAAGGGAATCTGATGAACCAACTTTAGAGAACCTGCCTGAGTCTCAGCCTA
 TTCCTTCCATGGACCTCCACGAACCTGAATCAATTGTAGAGGATGCCACATCTGACCTTGGATACCATGA
 GATCCCAGAAGACCCACTTGTGGCTGAAGAGTACTACGCTGATGCATTTGATTCTATTGTGTAGAGAGT
 GATGAGGAGGAAGAAGAAATAGCGTTAGAAAGACCAGAGAAAGAAATCAGGAATGAGGGATCCCAGCCTG
 CTTACAGAACAAACCAACAGGACAGTATATCGAAGCGTTGGCCAGGTGTTTGGAAAATGCTCTGGGTTG
 CACTTCTCTAGACACAAAGACCATCACCACCATGGCTGAAGACATGTCCCAGGACCACCAATTTTCAAC
 AGTGTGATGGCCAGGACCAAGATGAAACGCATGAGGGAATCAGCCATGCAGAAGCTGGGGACAGAAGTAT
 TTGAAGAGGTCTATAATTACCTCAAGAGAGCAAGGCATCAGAATGCTAGCGAAGCAGAGATCCGCGAGTG
 TTTGAAAAAGTGGTGCCTCAAGCCAGGACTGTTTTGAAGTGGACCAGCTCCTGTACTTTGAAGAGCAG
 TTGCTGATCACGATGGGAAAAGAACCTACTCTCCAGAACCATCTC

ACGCGTACGCGGCCGCTCGAG - GFP Tag - GTTTAA

Protein Sequence:

>RG221953 representing NM_024800
 Red=Cloning site Green=Tags(s)

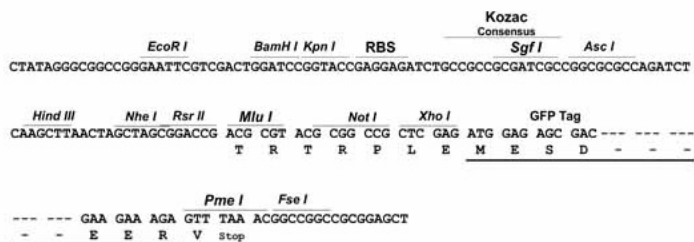
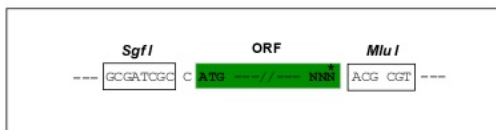
MLKFQEAACVSGSTAISTYPKTLIARRYVLQQKLGSGSFGTVYLVSDKKAKRGEELKVLKEISVGEINP
 NETVQANLEAQLLSKLDHPAIVKFAHASFVEQDNFCIITEYCEGRDLDDKIQEYKQAGKIFPENQIIEWFI
 QLLLGVDMYHERRILHRDLKSKNVFLKNNLLKIGDFGVSRLLMGSCDLATTLTGTPHYMSPEALKHQGYD
 TKSDIWSLACILYEMCCMNHAFAGSNFLSIVLKIVEGDTPLPERYPKELNAIMESMLNKNPSLRPSAIE
 ILKIPYLDEQLQNLRCRYSEMTELDKNLDCQKEAAHIINAMQKRIHLQTLRALSEVQKMTPRERMRLRKL
 QAADEKARKLKKIVEEKYEENSKRMQELRSRNFQQLSVDVLHEKTHLKGMEKEEQPEGRLSCSPQDEDE
 ERWQGREEESEPTLENLPESQIPSMDLHELESIVEDATSDLYHEIPEPDLVAEEYYADAFDSYCVES
 DEEEEEEIALERPEKEIRNEGSQPAYRTNQDSDIEALARCLENVLGTSLDTKITTTMAEDMSPGPPIFN
 SVMARTKMKRMRESAMQKLGTEVFEEVYNYLKRARHQNAEAEIRECLEKVVPQASDCFEVDQLLYFEEQ
 LLITMGKEPTLQNL

TRTRPLE - GFP Tag - V

Restriction Sites: SgfI-MluI

Cloning Scheme:

Cloning sites used for ORF Shutting:



ACCN: NM_024800

ORF Size: 1935 bp

OTI Disclaimer: The molecular sequence of this clone aligns with the gene accession number as a point of reference only. However, individual transcript sequences of the same gene can differ through naturally occurring variations (e.g. polymorphisms), each with its own valid existence. This clone is substantially in agreement with the reference, but a complete review of all prevailing variants is recommended prior to use. [More info](#)

OTI Annotation: This clone was engineered to express the complete ORF with an expression tag. Expression varies depending on the nature of the gene.

Components: The ORF clone is ion-exchange column purified and shipped in a 2D barcoded Matrix tube containing 10ug of transfection-ready, dried plasmid DNA (reconstitute with 100 ul of water).

Reconstitution Method:

1. Centrifuge at 5,000xg for 5min.
2. Carefully open the tube and add 100ul of sterile water to dissolve the DNA.
3. Close the tube and incubate for 10 minutes at room temperature.
4. Briefly vortex the tube and then do a quick spin (less than 5000xg) to concentrate the liquid at the bottom.
5. Store the suspended plasmid at -20°C. The DNA is stable for at least one year from date of shipping when stored at -20°C.

RefSeq: [NM_024800.3](#)

RefSeq Size: 2939 bp

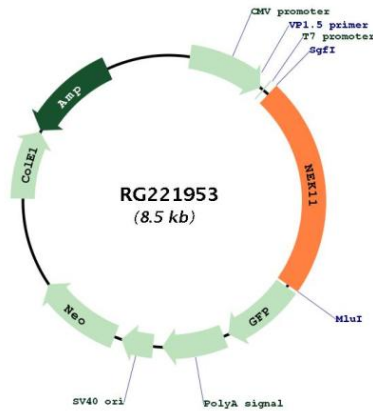
RefSeq ORF: 1938 bp

Locus ID: 79858

UniProt ID: [Q8NG66](#)

Cytogenetics: 3q22.1
Domains: pkinase, TyrKc, S_TKc
Protein Families: Druggable Genome, Protein Kinase
Gene Summary: This gene encodes a member of the never in mitosis gene A family of kinases. The encoded protein localizes to the nucleoli, and may function with NEK2A in the S-phase checkpoint. The encoded protein appears to play roles in DNA replication and response to genotoxic stress. Alternatively spliced transcript variants have been described.[provided by RefSeq, Mar 2009]

Product images:



Circular map for RG221953