

## Product datasheet for **RG221945**

### **BICD2 (NM\_015250) Human Tagged ORF Clone**

#### **Product data:**

Product Type:	Expression Plasmids
Product Name:	BICD2 (NM_015250) Human Tagged ORF Clone
Tag:	TurboGFP
Symbol:	BICD2
Synonyms:	bA526D8.1; SMALED2; SMALED2A; SMALED2B
Mammalian Cell Selection:	Neomycin
Vector:	pCMV6-AC-GFP (PS100010)
E. coli Selection:	Ampicillin (100 ug/mL)



[View online »](#)

**ORF Nucleotide Sequence:**

>RG221945 representing NM\_015250  
 Red=Cloning site Blue=ORF Green=Tags(s)

TTTTGTAATACGACTCACTATAGGGCGGCCGGGAATTCGTCGACTGGATCCGGTACCGAGGAGATCTGCC  
 GCC**CGGATCGCC**

ATGTCGGCGCCGTCGGAGGAGGAGTACGCGCGGCTGGTATGGAGGCGCAGCCGGAGTGGCTGCGCG  
 CCGAGGTGAAGCGGCTGTCCACGAGCTGGCCGAGACCACGCGTGAGAAGATCCAGGCGGCCGAGTACGG  
 GCTGGCGGTGCTCGAGGAGAAGCACAGCTCAAGCTGCAGTTCGAGGAGCTCGAGGTGGACTATGAGGCT  
 ATCCGCGAGCGAGATGGAGCAGCTCAAGGAGGCCTTTGGACAAGCACACAAACCACAAGAAGTGGCTG  
 CTGACGGAGAGAGCCGGGAGGAGCCTGATCCAGGAGTCGGCCTCAAGGAGCAGTACTACGTGCGGAA  
 GGTGCTAGAGCTGCAGACGGAGCTGAAGCAGTTGCGCAATGTCTCACCAACACGCGAGTCGGAGAATGAG  
 CGCCTGGCCTCTGTGGCCAGGAGCTGAAGGAGATCAACCAGAATGTGGAGATCCAGCGTGGCCGCTGC  
 GGGATGACATCAAGGAGTACAAATTCGGGAAGCTCGTCTGCTGCAGGACTACTCGGAATGGAGGAGGA  
 GAACATCAGCCTGCAGAAGCAAGTGTCTGTGCTCAGACAGAACCAGGTGGAGTTTGGAGGCCCTAAGCAT  
 GAGATCAAGCGTCTGGAGGAGGAGACCGAGTACCTCAACAGCCAGCTGGAGGATGCCATCCGCCTCAAGG  
 AGATCTCAGAGCGGCAGCTGGAGGAGGCGCTGGAGACCCTGAAGACGGAGCGCAACAGAAGAACAGCCT  
 GCGCAAGGAGCTGTCACACTACATGAGCATCAATGACTCCTTCTACACCAGCCACCTGCATGTCTCGCTG  
 GATGGCCTCAAGTTCAGTGACGATGCTGCCGAGCCCAACAACGATGCCGAGGCCCTGGTCAATGGCTTTG  
 AGCACGGCGGCCCTGGCCAAGCTGCCACTGGACAACAAGACCTCCACGCCCAAGAAGGAGGGCCCTCGCACC  
 GCCCTCCCCAGCCTCGTCTCCGACCTACTCAGTGAGCTCAACATCTCTGAGATCCAGAAGCTGAAGCAG  
 CAGCTGATGCAGATGGAGCGGGAAAAGGCGGGCCTGCTGGCAACGCTGCAGGACACACAGAAGCAGCTGG  
 AGCACAGCGGGGCTCCCTGTGAGAACAGCAGGAGAAGTGAACCGCCTCACAGAGAATCTGAGTGGCCT  
 GCGGCCCTGCAGGCCAGCAAGGAGCGGACAGACGCCCTGGACAACGAGAAGGACCGTGACAGCCATGAG  
 GATGGGGACTACTACGAGGTGGACATCAACGGGCTGAGATCTTGGCCTGCAAGTACCATGTGGCTGTGG  
 CTGAGGCTGGCGAGCTCCGCGAGCAGCTCAAGGCACTGCGCAGCACGACGAGGCTCGTGGGCCAGCA  
 CGCCGAGGAGAAGGGCCGCTATGAGGCTGAGGGCCAGGCACTCACGGAGAAGGTCTCCCTGCTAGAGAAG  
 GCCAGCCGCCAGGACCGGAGCTGCTGGCCGGCTGGAGAAGGAGCTAAAGAAGGTGAGCGACGTGCGCCG  
 GCGAGACACAGGGCAGCCTGAGTGTGGCCAGGATGAGCTGGTGACCTTCAAGTGGAGGCTGGCCAATCT  
 CTACCACCAGTGTGCATGTGCAACAATGAGACACCAACCGTGTGATGCTGGACTACTACCGGAGGGC  
 CAGGGCGGGCCGCGCACCAAGTCCCAGGGGGCCGACCAAGCCCGAGGCGGTGGCCGGCGCTCACCCA  
 TCCTCCTACCAAGGGGCTGCTGGCTCCTGAGGCGGGCCGAGCAGATGGTGGGACGGGGACAGCAGCCC  
 CTGCGCTGGCTCCTCACTGCCATCACCCCTGAGTGACCCACGCCGGGAGCCCATGAACATCTACAACCTG  
 ATCGCTATCATCCGTGACCAGATCAAGCACCTGCAGGCAGCCGTGGACCGCACCAGGAGCTGTCACGCC  
 AGCGCATTGCCTCTCAGGAGCTGGGCCCGCCGTGGACAAGGACAAGGAAGCGCTTATGGAGGAGATCCT  
 CAAGCTGAAGTCGCTGCTCAGCACCAAGCGGGAGCAGATCACCACGCTGCGCACTGTGCTCAAGGCCAAC  
 AAGCAGACGGCCGAGGTGGCCCTTGCCAACCTGAAGAGCAAGTATGAGAATGAGAAGGCCATGGTTACCG  
 AGACCATGATGAAGCTGCGCAATGAGCTCAAGGCCCTCAAGGAGGACGACGCCACCTTCTCCTCGCTGCG  
 TGCTATGTTTGGCACCAGGTGTGACGAGTACATTACACAGCTGGATGAGATGCAGCGGCAGCTGGCGGCT  
 GCTGAGGACGAGAAGAAGACGCTGAACCTGCTGCTGCGCATGGCCATCCAGCAGAAGCTGGCGCTGACCC  
 AGCGGCTGGAGCTGCTCAGCTGGACCATGAGCAGACCCGGCGTGGCCGTGCCAAAGCCGCCCGAAGAC  
 CAAGCCAGCCACACCGAGCCTG

AG**CGGACCG**ACGCGTACGCGGCCGCTCGAG - GFP Tag - GTTTAA

**Protein Sequence:** >RG221945 representing NM\_015250  
Red=Cloning site Green=Tags(s)

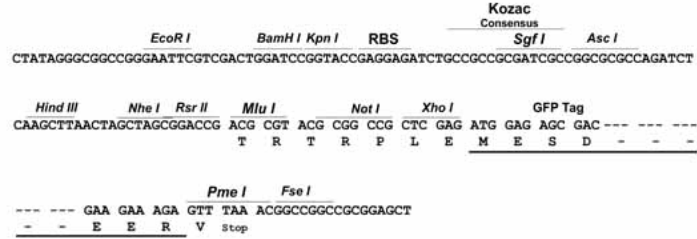
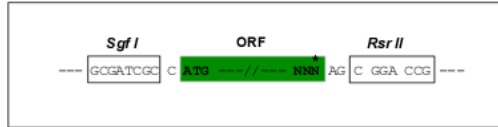
MSAPSEEEYARLVMEAPQEWLRAEVKRLSHELAEATTREKIQAAEYGLAVLEEKHQLKLQFEELEVDYEA  
IRSEMEQLKEAFGQAHTNHKKVAADGESREESLIQESASKEQYYVRKVLELQTELKQLRNVTNTQSENE  
RLASVAQELKEINQVVEIQRGRLRDDIKEYKFREARLLQDYSELEENISLQKQVSVLRQNQVFEGLKH  
EIKRLEEEETEYLNQLEDAIRLKEISERQLEEALETLKTEREQKNSLRKELSHYMSINDSFYTSHLHVSL  
DGLKFSDDAAEPNDAEALVNGFEHGGLAKLPLDNKTSTPKKEGLAPPSPSLVSDLLSELNISEIQKQKQ  
QLMQMEREKAGLLATLQDTQKQLEHTRGSLSEQQEKVTRLTENLSALRRLQASKERQTALDNEKDRDSHE  
DGDYYEVDINGPEILACKYHVAVAEAGELREQLKALRSTHEAREAQAHEEKGRYEAEQALTEKVSLLK  
ASRQDRELLARLEKELKKVSDVAGETQGSLSVAQDELVTFSEELANLYHHVCMCNNETPNRVMLDYYREG  
QGGAGRTSPGGRTSPEARGRRSPILLPKGLLAPEAGRADGGTGDSSSPGSSLPSPSDPRREPMNIYNL  
IAIIRDQIKHLQAAVDRTTEL SRQRIASQELGPAVDKDKEALMEEILKLSLLSTKREQITTLRTVLKAN  
KQTAEVALANLKSKEYENKAMVTE TMMKLRNELKALKEDAATFSSLRAMFATRCDEYITQLDEMQRQLAA  
AEDEKKTLSLLRMAIQKQLALTQRLELLELDHEQTRRGRAKAAPKTKPATPSL

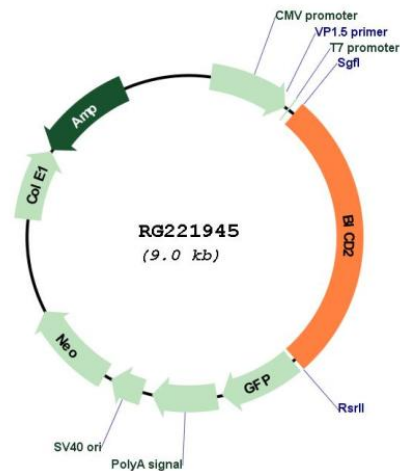
SGPTRRRLE - GFP Tag - V

**Restriction Sites:** Sgfl-RsrII

Cloning Scheme:

Cloning sites used for ORF Shuttling:



**Plasmid Map:**


**ACCN:** NM\_015250

**ORF Size:** 2472 bp

**OTI Disclaimer:** The molecular sequence of this clone aligns with the gene accession number as a point of reference only. However, individual transcript sequences of the same gene can differ through naturally occurring variations (e.g. polymorphisms), each with its own valid existence. This clone is substantially in agreement with the reference, but a complete review of all prevailing variants is recommended prior to use. [More info](#)

**OTI Annotation:** This clone was engineered to express the complete ORF with an expression tag. Expression varies depending on the nature of the gene.

**Components:** The ORF clone is ion-exchange column purified and shipped in a 2D barcoded Matrix tube containing 10ug of transfection-ready, dried plasmid DNA (reconstitute with 100 ul of water).

**Reconstitution Method:**

1. Centrifuge at 5,000xg for 5min.
2. Carefully open the tube and add 100ul of sterile water to dissolve the DNA.
3. Close the tube and incubate for 10 minutes at room temperature.
4. Briefly vortex the tube and then do a quick spin (less than 5000xg) to concentrate the liquid at the bottom.
5. Store the suspended plasmid at -20°C. The DNA is stable for at least one year from date of shipping when stored at -20°C.

**RefSeq:** [NM\\_015250.4](#)

**RefSeq Size:** 4625 bp

**RefSeq ORF:** 2475 bp

**Locus ID:** 23299

**UniProt ID:** [Q8TD16](#)

**Cytogenetics:** 9q22.31

**Gene Summary:** This gene is one of two human homologs of *Drosophila bicaudal-D* and a member of the Bicoid family. It has been implicated in dynein-mediated, minus end-directed motility along microtubules. It has also been reported to be a phosphorylation target of NIMA related kinase 8. Two alternative splice variants have been described. [provided by RefSeq, Jul 2008]