

## Product datasheet for **RG221938**

### PTPRS (NM\_130855) Human Tagged ORF Clone

#### Product data:

Product Type:	Expression Plasmids
Product Name:	PTPRS (NM_130855) Human Tagged ORF Clone
Tag:	TurboGFP
Symbol:	PTPRS
Synonyms:	PTPSIGMA; R-PTP-S; R-PTP-sigma
Mammalian Cell Selection:	Neomycin
Vector:	pCMV6-AC-GFP (PS100010)
E. coli Selection:	Ampicillin (100 ug/mL)
ORF Nucleotide Sequence:	>RG221938 representing NM_130855 Red=Cloning site Blue=ORF Green=Tags(s)

TTTTGTAATACGACTCACTATAGGGCGGCCGGAATTCGTCGACTGGATCCGGTACCGAGGAGATCTGCC  
GCC**CGATCGCC**

ATGGCGCCACCTGGGGCCTGGCATGGTGTCTGTGGTTGGTCCCATGGGCCTCCTTGTGGTCTGCTCG  
TTGGAGGCTGTGCAGCAGAAGAGCCCCAGGTTTATCAAAGAACCAAGGACCAGATCGGCGTGTGGG  
GGGTGTGGCCTCTTCGTGTGTGACAGCCACGGGTGACCCCAAGCCACGAGTGACCTGGAACAAGAAGGGC  
AAGAAGGTCAACTCTCAGCGCTTGAGACGATTGAGTTTGTGAGAGTGCAGGGCAGTGTGAGGATCC  
AGCCGCTGAGGACACCGGGGATGAAAACGTGTACGAGTGTGTGGCCAGAAGTCCGTTGGGAGATCAC  
AGTCCATGCCAAGCTTACTGTCTCCGAGAGGACCACTGCCCTCTGGCTTCCCCAACATCGACATGGGC  
CCACAGTTGAAGGTGGTGGAGCGGACACGGACAGCCACCATGCTCTGTGACGCCAGCGGCAACCCTGACC  
CTGAGATCACCTGGTTCAAGGACTTCTGCCTGTGGATCCTAGTGCCAGCAATGGACGCATCAAACAGCT  
GCGATCAGGAGCCCTGCAGATTGAAAGCAGTGAGGAAACCGACCAGGGCAAATATGAGTGTGTGGCCACC  
AACAGCGCCGGCGTGCCTACTCCTCACCTGCCAACCTTACGTGCGAGAGCTTCGAGAAGTCCGCCGCG  
TGGCCCGCGCTTCTCCATCCTGCCATGAGCCACGAGATCATGCCAGGGGGCAACGTGAACATCACCTG  
GACATGCCCGTGGGTGGGAACTGCTGGAACCTCACAGATGTCAAGGACTCGGCAACTACACCTGCGTGG  
CCATGTCCAGCCTGGGCGTCAATTGAGCGGTTGCTCAGATCACGGTGAATCTCTCCCCAAGCTCCCGG  
GACTCCCATGGTACTGAGAACACAGCCACCAGCATCACCATCACGTGGGACTCGGGCAACCCAGATCCT  
GTGTCCTATTACGTCATCGAATATAAATCCAAGAGCCAAGACGGGCCGTATCAGATTAAGAGGACATCA  
CCACCACAGTTACAGCATCGGCGGCTGAGCCCCAACTCGGAGTACGAGATCTGGGTGTGCGCCGTCAA  
CTCCATCGGCCAGGGGCCCCAGCGAGTCCGTGGTACCCGCACAGGCGAGCAGCCCCGCCAGCGCG  
CCGCGGAACGTGCAAGCCGGATGCTCAGCGGACACCATTGATTGTGAGTGGGAGGAGCCGTTGGAGC  
CCAACGGCCTGATCCGCGCTACCGCTACTACACCATGGAACCGGAGACCCCGTGGCAACTGGCA  
GAAGACAACGTGGACGACAGCCTGCTGACCACCGTGGCAGCCTGCTGGAGGACGAGACCTACACCGTG



[View online >](#)

CGGGTGCTCGCCTTACCTCCGTGCGGACGGGCCCTCTCGGACCCATCCAGGTCAAGACGCAGCAGG  
 GAGTGCCGGGCCAGCCATGAACCTGCGGGCCGAGGCCAGGTGCGGAGACCAGCATCACGCTGCTGGAG  
 CCCCCGCGGCAGGAGATATCAAGTACGAGCTCCTCTCCGGGAAGGCGACCATGGCCGGGAGGTG  
 GGAAGGACCTTCGACCCGACGACTTCTACGTGGTGGAGGACCTGAAGCCCAACACGGAGTACGCCCTCC  
 GCCTGGCGGCCCGCTCGCCGACGGGCTGGGCGCCTTACCCCGTGGTGGGACGCGACGCTGCAGTC  
 CATCTCGCCCAAGAACTCAAGGTGAAAATGATCATGAAGACATCAGTTCTGCTCAGTGGGAGTTCCT  
 GACAACACAACCTACCCACACCCCTACAAGATCCAGTACAATGGGCTCACACTGGATGGATGGCCGTA  
 CCACCAAGAAGCTCATCAGCACCTCAAGCCCCACACCTTCTACAACCTTGTGCTGACCAATCGCGGCAG  
 CAGCCTGGGCGGCTCCAGCAGACGGTACCCGCTGGACTGCCTTCAACCTGCTCAACGGCAAGCCAGC  
 GTCGCCCCAAGCCTGATGCTGACGGCTTTCATCATGGTGTATCTTCTGACGGCCAGAGCCCGTGCCTG  
 TCCAGAGCTATTTTATTGTGATGGTGCCTGCGCAAGTCTCGTGGAGGCCAATTCCTGACCCCGTGGG  
 TAGCCAGAGGACATGGATCTGGAAGAGCTCATCCAGGACATCTCAGGGTACAGAGGCGCAGCCTGCGG  
 CACTCGCGTCAGTGGAGGTGCCCGGCCCTATATTGACGCTCGTTCTCTGTGCTGCCACCCACGTTCC  
 ATCCCGGCGACCAGAAGCAGTATGGCGGCTTCGATAACCGGGGCTGGAGCCGGCCACCGCTATGCTCT  
 CTTCTGCTTGGCGTTCAGAAGAGCGAGCCTACCTTTCAGCCAGTCCCTTCTCAGACCCCTCCAG  
 CTGGATAACCCGGACCCCGACCCATCGTGGATGGCGAGGAGGGCTTATCTGGGTGATCGGGCCTGTG  
 TGGCCGTGGTCTTATAATCTGCATTGTCTATCCTGCTCTACAAGAAACCCGACAGTAAACG  
 CAAGGACTCAGAACCCCGACCAAAATGCCTCCTGAAACAATGCCGACCTCGCCCTCACACCCCAAGGAC  
 CCTGTGGAATGAGACGCATTAACCTCCAGACTCCAGGCATGCTTAGCCACCCGCAATTCCTATCGCAG  
 ACATGGCGGAGCACACGGAGCGGCTCAAGGCCAACGACAGCCTCAAGCTCTCCAGGAGTATGAGTCCAT  
 CGACCTGGACAGCAGTTCATATGGGAACATCCAACCTGGAAGTGAACAAGCCGAAGAACCCTATGCC  
 AACGTATCGCCTATGACCACTCCCGTGCATCTCCAGCCATTGAAGGCATCATGGGCGAGTATTACA  
 TCAATGCCAACTACGTGGACGGTACCGGCGTCAGAACGCGTACATTGCCACGAGGGGCGCTGCTGTA  
 GACCTTTGGGGACTTCTGGCGTATGGTGTGGGAGCAGCGTTCGGCGACCATCGTTCATGATGACCGGCTG  
 GAGGAGAAGTACCGATCAAGTGTGATCAGTATTGGCCAAACAGAGGCACGGAGACCTACGGCTTATCC  
 AGGTACGTTGCTAGATACCATCGAGCTGGCCACATTCTGCGTCAGGACATTCTCTGACACAAGAATGG  
 CTCCAGTGAGAAACGCGAGGTCCGCCAGTTCAGTTTACGGCGTGGCCGGACCATGGCGTCCCGAATAC  
 CCAACGCCCTTCTGGCTTCTGCGGAGAGTCAAGACCTGCAACCCGCCAGATGCCGGCCCATCGTGG  
 TTCCTGACGAGTCCGGTGTGGGCCGCACAGGCTGCTTTATCGTCATCGACGCCATGCTTGAGCGGATCAA  
 GCCAGAGAAGACAGTTCATGCTATGGCCACGTGACGCTCATGAGTCCCAGCGCAACTACATGGTGCAG  
 ACGGAGGACAGTACAGTTCATCCACGAGGCCCTGCTGGAGGCCGTGGGCTGTGGCAACACAGAAGTGC  
 CCGCACGACGCTCTATGCCTACATCCAGAAGCTGGCCAGGTGGAGCCTGGCGAACACGCTCACTGGCAT  
 GGAACCTGAGTTCAAGCGGCTGGCTAACTCCAAGGCCACACGTCACGCTTTCATCAGTGCCTTCTGCT  
 TGTAACAAGTTCAAGAACCCTGGTGAACATCATGCCCTATGAGAGCACACGGGTCTGTGCTGCAACCCA  
 TCCGGGGTGTGGAGGGCTCTGACTACATCAACGCCAGTTCATTGATGGCTACAGGCAGCAGAAGCCCTA  
 CATCGGACACAGGGGCCGCTGGCGGAGACCACGGAAGACTTCTGGCGCATGCTGTGGGAGAACAATTG  
 ACGATCGTGGTGTGCTGACCAAGCTGCGGGAGATGGGCCGGGAGAAGTGTACCCAGTACTGGCCGGCCG  
 AGCGCTCTGCCCGCTACAGTACTTTGTGGTAGATCCGATGGCAGAATACAACATGCCTCAGTATATCCT  
 GCGAGAGTTCAAGGTACAGATGCCCGGATGGCCAGTCCCGGACTGTCGGCAGTCCAGTTCACAGAC  
 TGGCCGGAACAGGTGTGCCAAAGTGGGGGAGGCTTTCATCGACTTATTGGCCAAGTGCATAAGACTA  
 AGGAGCAGTTTGGCCAGGACGGCCCATCTCTGTCCACTGCAGTCCCGGCGTGGGAGGACGGGCGTCTT  
 CATCACGCTTAGCATCGTGTGAGCGGATGCGGTATGAAGCGTGGTGGACATCTTTCAGACGGTGAAG  
 ATGCTACGAACCCAGCGGCCGATGGTGCAGACAGAGGATGAGTACCAGTTCTGTTACCAGGCGGCAC  
 TGGAGTACCTCGGAAGCTTTGACCACTATGCAACC

AGCGGACCGACGCGTACGCGGCCGCTCGAG - GFP Tag - GTTTAA

Protein Sequence: >RG221938 representing NM\_130855  
 Red=Cloning site Green=Tags(s)

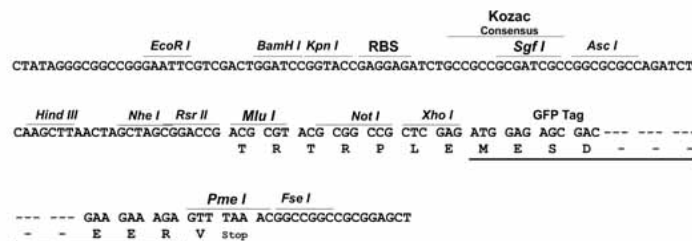
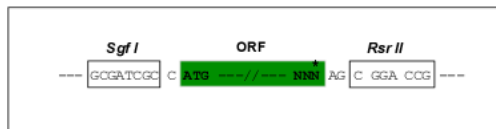
MAPTWPGMVSVVGPMGLLVLLVGGCAAEEPPRFIKEPKDQIGVSGGVASFVCQATGDPKPRVTWNKKG  
 KKVNSQRFETIEFDESAGAVLRIQPLRTPRDENVYECVAQNSVGEITVHAKLTVLREDQLPSGFNIDMG  
 PQLKVVVERTRTATMLCAASGNPDPEITWFKDFLPVDPSASNGRIKQLRSGALQIESSEETDQGYECVAT  
 NSAGVRYSSPANLYVRELREVRVAPRFSILPMSHEIMPGGNVNICVAVGSPMPYVKKMQGAEDLTPED  
 DMPVGRNVLELTDVKDSANYTCVAMSSLGVIEAVAQITVKSLPKAPGTPMVTENTATSITITWDSGNPDP  
 VSYVYIEYKSKSQDGPYQIKEDITTRYISIGGLSPNSEYEIWSAVNSIGQGPPSESVVTRTGEQAPASA  
 PRNVQARMLSATMIVQWEEPVEPNGLIRGYRVYYTMEPEHPVGNWQKHNVDDSLTTVGSLLDEDETYTV  
 RVLAFSTVGDGPLSDPIQVKTQQGVPGQPMNLRAEARSETITLWSPPRQESI IKYELLFREGDHGREV  
 GRTFDPTTSYVVEDLKPNTYAFRLAARSPQGLGAFTPVVRQRTLQSI SPKNFKVKMIMKTSVLLSWEFP  
 DNYNSPTPYKIYNGLTLDVDGRTTKKLI THLKPHTFYNFVLTNRGSSLGGLQQTVAWTA FNLLNGKPS  
 VAPKPDADGFIMVYLPDQSPVPVQSYFIVMVPLRKS RGGQFL TPLGSPEDMDLEELIQDISRLQRSLR  
 HSRQLEVPRPYIAARF SVLPPTFHPGDQKQYGGFDNRGLEPGRYVLFVLA VLKSEPTFAASPFSDPFQ  
 LDNPDPQIVDGEGLIWWIGPVLAVVFIICIVIAILLYKNKPD SKRKDSEPRTKCLLNNADLAPHHPKD  
 PVEMRRINFQTPGML SHPPPIADMAEHTERL KANDSLKLSQEYESIDPGQQFTWEHSNLEVNKPKNRYA  
 NVIAYDHSRVLQPIEGIMGSDYINANYVDGYRRQNAYIATQGPLPETFGDFWRMVWEQRSAIVMMTRL  
 EEKSRIKCDQYWPNRGTETYGFIQVTL LDTIELATFCVRTFSLHKNGSSEKREVRQFQFTAWPDHGVPEY  
 PTPFLAFLRRVKT CNPPDAGPIVHCSAGVGR TGCFIVIDAMLERIKPEKTVDVYGHVTL MRSQRNYMVQ  
 TEDQYSFIEHALLEAVGCGNTEVPARSL YAYIQKLAQVEPGEHVTGMELEFKRLANSKAHTSRFISANLP  
 CNKFKNRLVNI MPYESTRVCLQPIRGVEGSDYINASFIDGYRQQKAYIATQGPLAETTEDFWRMLWENNS  
 TIVVMLTKLREMGREKCHQYWAERSARYQYFVVDPMAEYNMPQYILREFKVT DARDGQSRTVRFQFTD  
 WPEQGVPKSGEGFIDFIQGVHKTKEQFGQDGPISVHCSAGVGR TGCVFITLSIVLERMRYEGVVDIFQTVK  
 MLRTQRPAMVQTEDEYQFCYQAAL EYLG SFDHYAT

SGPTRRRLE - GFP Tag - V

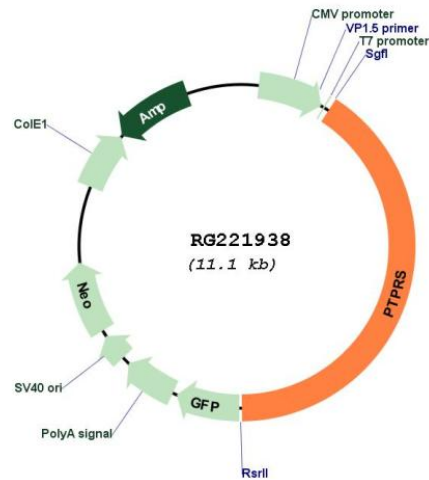
Restriction Sites: SgfI-RsrII

Cloning Scheme:

Cloning sites used for ORF Shuttling:



## Plasmid Map:



ACCN: NM\_130855

ORF Size: 4515 bp

OTI Disclaimer: The molecular sequence of this clone aligns with the gene accession number as a point of reference only. However, individual transcript sequences of the same gene can differ through naturally occurring variations (e.g. polymorphisms), each with its own valid existence. This clone is substantially in agreement with the reference, but a complete review of all prevailing variants is recommended prior to use. [More info](#)

OTI Annotation: This clone was engineered to express the complete ORF with an expression tag. Expression varies depending on the nature of the gene.

Components: The ORF clone is ion-exchange column purified and shipped in a 2D barcoded Matrix tube containing 10ug of transfection-ready, dried plasmid DNA (reconstitute with 100 ul of water).

<b>Reconstitution Method:</b>	<ol style="list-style-type: none"><li>1. Centrifuge at 5,000xg for 5min.</li><li>2. Carefully open the tube and add 100ul of sterile water to dissolve the DNA.</li><li>3. Close the tube and incubate for 10 minutes at room temperature.</li><li>4. Briefly vortex the tube and then do a quick spin (less than 5000xg) to concentrate the liquid at the bottom.</li><li>5. Store the suspended plasmid at -20°C. The DNA is stable for at least one year from date of shipping when stored at -20°C.</li></ol>
<b>RefSeq:</b>	<a href="#">NM_130855.1</a> , <a href="#">NP_570925.1</a>
<b>RefSeq Size:</b>	5171 bp
<b>RefSeq ORF:</b>	4518 bp
<b>Locus ID:</b>	5802
<b>UniProt ID:</b>	<a href="#">Q13332</a>
<b>Cytogenetics:</b>	19p13.3
<b>Protein Families:</b>	Druggable Genome, Phosphatase, Transmembrane
<b>Gene Summary:</b>	<p>The protein encoded by this gene is a member of the protein tyrosine phosphatase (PTP) family. PTPs are known to be signaling molecules that regulate a variety of cellular processes including cell growth, differentiation, mitotic cycle, and oncogenic transformation. This PTP contains an extracellular region, a single transmembrane segment and two tandem intracytoplasmic catalytic domains, and thus represents a receptor-type PTP. The extracellular region of this protein is composed of multiple Ig-like and fibronectin type III-like domains. Studies of the similar gene in mice suggested that this PTP may be involved in cell-cell interaction, primary axonogenesis, and axon guidance during embryogenesis. This PTP has been also implicated in the molecular control of adult nerve repair. Four alternatively spliced transcript variants, which encode distinct proteins, have been reported. [provided by RefSeq, Jul 2008]</p>