

Product datasheet for **RG221936**

EPC1 (NM_025209) Human Tagged ORF Clone

Product data:

Product Type:	Expression Plasmids
Product Name:	EPC1 (NM_025209) Human Tagged ORF Clone
Tag:	TurboGFP
Symbol:	EPC1
Synonyms:	Epl1
Mammalian Cell Selection:	Neomycin
Vector:	pCMV6-AC-GFP (PS100010)
E. coli Selection:	Ampicillin (100 ug/mL)



[View online »](#)

ORF Nucleotide Sequence:

>RG221936 representing NM_025209
 Red=Cloning site Blue=ORF Green=Tags(s)

TTTTGTAATACGACTCACTATAGGGCGGCCGGGAATTCGTCGACTGGATCCGGTACCGAGGAGATCTGCC
 GCC**CGGATCGCC**

ATGAGTAAACTGTCGTTTCGGGCGGGGCGCTAGACGCCTCGAAGCCGCTGCCGTTTTCCGCTGTGAGG
 ATCTGCCCGACCTGCACGAATACGCCTCGATAAACAGGGCCGTGCCGCAGATGCCACCGGAATGGAGAA
 GGAAGAGGAGTCGGAACATCATCTTCAGCGGGCTATTTACGACAGCAGGTGTATGGCGAGAAGAGGGAT
 AATATGGTTATACCGGTCCCAGAGGCAGAAAGTAATATTGCTTACTATGAGTCTATATATCTGGGGAA
 TTAAGATGCCAAAGCAGCTCATTACATACAGCCTTTTAGTTGGATGCTGAACAGCCTGATTATGATTT
 GGATTCTGAAGATGAAGTATTTGTGAATAAACTGAAAAAGAAAATGGACATCTGCCATTGCAATTTGAG
 GAGATGATTGACCGCTAGAAAAAGGCAGTGGTCAGCAGCCAGTCACTCTGCAGGAAGCCAACTACTGC
 TAAAAGAAGATGATGAACTAATTAGAGAAGTTTATGAATATTGGATTAAGAGAGAAAAACTGTCGAGG
 GCCATCTCTTATCCATCAGTAAAACAAGAGAAGCGAGATGGTTCCAGCACAAATGATCCTTATGTGGCT
 TTTAGAAGGCGTACTGAAAAAATGCAGACTCGAAAAAATCGAAAAATGATGAAGCCTCTTACGAAAAAA
 TGCTTAAGCTGCGACGAGATCTAAGTCGAGCTGTTACTATTCTAGAGATGATAAAAAAGAAGAAAAAAG
 TAAAAGAGAGCTATTGCACTTAACACTGGAAATTTATGGAAAAGAGGTATAATTTGGGCGACTACAATGGA
 GAGATCATGTCTGAGGTTATGGCACAGAGACAGCCAATGAAACCTACTTATGCCATCCCCATCATCCCTA
 TTAATAAGCAGTCAATTTAAACACCAGGAAGCAATGGATGTGAAGGAGTTCAAAGTTAATAAGCAAGA
 TAAAGCCGATCTTATCCGACCGAAACGGAAATATGAAAAGAAGCCCAAAGTCTTACCATCGTCTGCCGCT
 GCTACTCCCAACAGACGAGTCTGCTGCACTGCCAGTCTCAATGCTAAAGATCTGAATCAGTATGACT
 TTCCCAGCTCAGACGAAGAACCTCTCCCAGGTTTTGCTGGCTCTTCGGAAGCTGAGGAAGCAATGA
 TCCTGATGGTCCTTTTGCTTTCCGTAGGAAAGCAGGCTGTCAGTACTATGCTCCTCACTTAGACCAA
 GGCAACTGGCCTTGACTAGTCCTAAAGATGGAGGATTAGGGGATGTGCGATATAGATACTGCTTAACTA
 CTCTCACCGTACCCAAAGGTGATTGGATTTGCACGAAGACGGGTTGGGCGCGTGGAAAGGTTCTACT
 GGACAGAGCTCATTAGACTATGACAGTGTGTTTACCATCTGGATTTGGAAATGCTTCTCACCA
 CATTCTCCAGTCAATCAGTTTGCAATACCTCAGAAACAATACCTCGGACAAATCTTCTCAAAGACC
 TCAGTCAGATACTAGTCAATATCAAATCATGTAGATGGCGCATTTTAGGCCTCGGACACCATCCCTACA
 TGACAGTGACAATGATGAACTCTCCTGTAGAAAATATATAGGAGTATAAACCGAACAGGAACAGCACAA
 CCTGGGACCCAGACATGCAGTACCTCTACGCAAAGTAAAAGTAGCAGTGGTTTCAGCACACTTTGCATTTA
 CAGCCGAACAATACCAGCAACATCAACAGCAACTGGCACTCATGCAGAAACAGCAGCTTGCACAAATTC
 GCAACAGCAAGCAATAGTAATTCCTCCACCAACACATACAGAACTTGCACTAACCAGCAGAAAAAGT
 GGCTTTGCGCTGAATATACAGGGTTTAGAAAGAACAACACTACAGGGTTTTGTTTCTAAGACTTTGGATTCTG
 CTAGTGACAGTTTGTGCTTCTGCTTTGGTGACATCAGAAACAATGATGGGATTCAGATGAAGGATGA
 TGTGGTGTGGAATCGGGTGAATGGCGTCTTCCAGCCTCAGGAGTATACAAGGGTTACACCTCAGT
 AGTACTACACCAACAGCACTTGTACATACAAGTCCATCAACGGCAGGTTCCAGCTTTGTTACAGCCTTCAA
 ATATTACAGACTTCAAGTTCCACAGTGCAGTCAAGTCAAGTAACTGCTGCCAATTTGCAACAAC
 TCAGGTTCTGATTGGGAACAACATTCGATTAACCTGTACCTTATCAGTTGCCACTGAAACTCTATTGCC
 CCAATAAATGCACGACATATACCTAGGACTTAAAGTGTGTTCCATCATCTGCCTTAAAGCTGGCCGCTG
 CAGCAAATGTCAAGTTTCAAGTCCCATCTTATCCTCTGTAGATTGAGTTCCAAAGGAAAAATCATGA
 ATCAGAAAAGCCAGCACTGAACAACATAGCAGACAACACAGTAGCGATGGAGGTGACG

ACCGTACGCGGCCGCTCGAG - GFP Tag - GTTTAA

Protein Sequence: >RG221936 representing NM_025209
 Red=Cloning site Green=Tags(s)

```

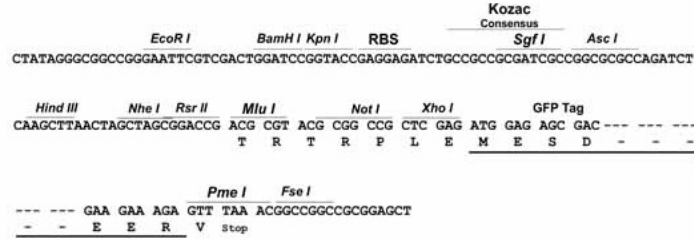
MSKLSFRARALDASKPLPVFRCELDLHEYASINRAVPQMPTGMEKEESEHHLQRAISAQQVYGEKRD
NMVIPVPEAESNIAYYESIYPGEFKMPKQLIHIQPFSLDAEQPDYDLSEDEVFNKLNKMDICPLQFE
EMIDRLEKGGQQPVSLQEAKLLKEDDELIREVYEWIKKRKNCRGPSLIPSVKQEKRDGSSSTNDPYVA
FRRRTEKMQTRKNRKNDEASYEKMLKRRDL SRAVTILEMIKRREKSKRELLHLTLEIMEKRYNLGDYNG
EIMSEVMAQRQPMKPTYAIP IIPITNSSQFKHQEAMDVKEFKVKNQDKADLIRPKRKYEKPKVLPSSAA
ATPQQTSPAALPVFNAKDLNQYDFPSSDEEPLSQVLSGSSEAEEDNDPDGPF AFRRKAGCQYYAPHL DQT
GNWPWTSPKDGGLGDVRYRYCLTTLTVPQRCIGFARRRVGRGGRVLLDRAHSDYDSVFHHL DLEMLSSPQ
HSPVNFANTSETNTSDKSFSKDL SQILVNIKSCRWRHFRPRTPSLHSDNDELSCRKLYRSINRTGTAQ
PGTQTCSTSTQSKSSSGSAHF AFTA EQYQQHQQLALMQQLAQIQQQQANSNSSTNTSQNLASNQQS
GFRLNIQGLERTLQGFVSKTLD SASAQFAASALVTSEQLMGFKMKDDVVLGIGVNGVLPASGVYKGLHLS
STTPTALVHTSPSTAGSALLQPSNITQTSSSHSALSHQVTAANSATTQVLIGNNIRLTPSSSVATVNSIA
PINARHIPRTL SAVPSSALKLAAAANCQVSKVPSSSSVDSVPRENHESEKPALNNIADNTVAMEVT
  
```

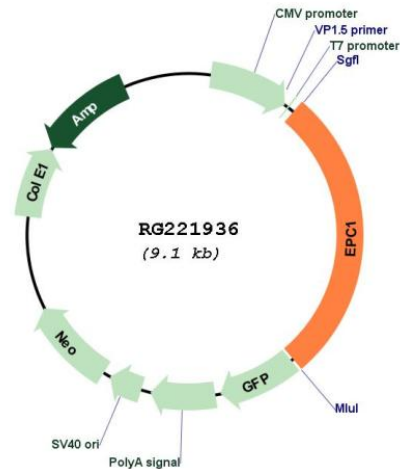
TRTRPLE - GFP Tag - V

Restriction Sites: Sgfl-MluI

Cloning Scheme:

Cloning sites used for ORF Shutting:



Plasmid Map:


ACCN: NM_025209

ORF Size: 2508 bp

OTI Disclaimer: The molecular sequence of this clone aligns with the gene accession number as a point of reference only. However, individual transcript sequences of the same gene can differ through naturally occurring variations (e.g. polymorphisms), each with its own valid existence. This clone is substantially in agreement with the reference, but a complete review of all prevailing variants is recommended prior to use. [More info](#)

OTI Annotation: This clone was engineered to express the complete ORF with an expression tag. Expression varies depending on the nature of the gene.

Components: The ORF clone is ion-exchange column purified and shipped in a 2D barcoded Matrix tube containing 10ug of transfection-ready, dried plasmid DNA (reconstitute with 100 ul of water).

Reconstitution Method:

1. Centrifuge at 5,000xg for 5min.
2. Carefully open the tube and add 100ul of sterile water to dissolve the DNA.
3. Close the tube and incubate for 10 minutes at room temperature.
4. Briefly vortex the tube and then do a quick spin (less than 5000xg) to concentrate the liquid at the bottom.
5. Store the suspended plasmid at -20°C. The DNA is stable for at least one year from date of shipping when stored at -20°C.

RefSeq: [NM_025209.5](#)

RefSeq Size: 2913 bp

RefSeq ORF: 2511 bp

Locus ID: 80314

UniProt ID: [Q9H2F5](#)

Cytogenetics: 10p11.22

Protein Families: Transcription Factors

Gene Summary: This gene encodes a member of the polycomb group (PcG) family. The encoded protein is a component of the NuA4 histone acetyltransferase complex and can act as both a transcriptional activator and repressor. The encoded protein has been linked to apoptosis, DNA repair, skeletal muscle differentiation, gene silencing, and adult T-cell leukemia/lymphoma. Alternative splicing results in multiple transcript variants. [provided by RefSeq, Dec 2012]