

Product datasheet for **RG221872**

BAZ2B (NM_013450) Human Tagged ORF Clone

Product data:

Product Type:	Expression Plasmids
Product Name:	BAZ2B (NM_013450) Human Tagged ORF Clone
Tag:	TurboGFP
Symbol:	BAZ2B
Synonyms:	WALp4
Mammalian Cell Selection:	Neomycin
Vector:	pCMV6-AC-GFP (PS100010)
E. coli Selection:	Ampicillin (100 ug/mL)
ORF Nucleotide Sequence:	>RG221872 representing NM_013450 Red=Cloning site Blue=ORF Green=Tags(s)

TTTTGTAATACGACTCACTATAGGGCGGCCGGAATTCGTCGACTGGATCCGGTACCGAGGAGATCTGCC
GCC**CGATCGCC**

ATGGAGTCTGGAGAACGGTTACCATCCTCAGCAGCCTCCTCTACTACACCAACTTCATCTTCGACACCTT
CTGTGGCTTCAGTAGTTTCAAAGGTGGCCTTCCACTGGAGTTGCTTCACTTAGCTCTACAATCAACCC
ATGTGGACATTTATTAGAACAGCTGGGATCAACCGTTAACCTGTCCACAGTGTGAGTGCCTTCCCA
ATGGTCAGCCACCCAGTCTTTGGTCTACATTAGCCAGCTCAGGGCATTGAGAATTTGGTGGTTGGGA
CACTTGGTACACCCACAGCCTTAGCCGACATCCCAACTAGCATCTTTCCAGGTGCAGAAATGGTGGCG
AACAACTGATGCTCATACTCGTACAGGAGCAACCTTCTTCCACCATTAAGGAAATCCACCACTATT
GCTCCCCAGCCAGAAATCATGATTCTTCTTCAATTCATTCAAGGACTTCGGGAAAAAGTAAATCGAAATG
GTCCCGAAAAAGGTGTAATGGGTCAATAAATGGAAGTAATACATCATCTGTAATTGGTATCAACACATC
TGTAATCCACTACTGCTTCAAGTCCATGGGACAACTAAAAGTACAAGCTCAGGTGGAGGAAATCGA
AAATGTAATCAGGAACAAAGCAAAACCAGCCTTTGGATGCTAGAGTTGACAAAAACAAGATAAGAAAC
CAAGGAAGAAAGCAATGGAAAGTCTAGCAACAGTGATAGTATTGAGGCACATCATCAGACACCTCAAG
TGAAGGCATTAGTAGCAGTGATTGATGATCTAGAAGAAGATGAAGAAGAAGAAGTCAAAGTATTGAA
GAAAGTGAAGATGATGATTCTGATTCAGAGAGTGAAGCACAACATAAAAGTAAACACCAAGGTGCTATTAC
ATGGTATTTAGACCCAAAAGCAGATGGACAGAAAGCAACTGAAAAAGCCAGGAAAAAAGAATACACCA
GCCATTACCTCTTGCCTGTAATCCAGACTCACTCATTCCAATCCAGCAGAAGCAGCCTCAGGTTTTG
TCACAGCAGCTTCCATTTATTTCCAAAGCTCTCAGGCAAGGAGGAATCTGTGAACAAACACACAGTG
TAATACAGTCTACGGATTGGTGTCCAATGTGAAACCTTTATCTTTGGTAAATCAAGCAAAAGGAAAC
TTACATGAAACTCATAGTTCCTTCTCCTGATGTTCTTAAAGCAGGGAATAAAAAACCTCTGAAGAACT
AGTTTATTGACCAAGTGAATTGAGATCCAAACGGGAACAATAAACAGGCATTCCATCAGATTAAGA
AACAAAGTCAATGAAGAGCCTGAAGAAGTTATTGCAGCTTTGCAAAATCCAAAAGCAACCTCTAGTTC
ACCAGCAGATCCAAAACAACATTAGAAAACAACCACCAATCCATTCTTGACAAATGCACTTTTAGTT



[View online »](#)

AATCACCAACCAATGGAGTTATTCAAAGTGTCATTCAAGAAGCTCCTCTAGCACTTACTACAAAACTA
 AAATGCAGAGCAAGATTAATGAAAAATTGCTGCTGCAAGTAGCACCCCTTTTCTCACCTGTAATCT
 GAGTACAAGTGGGAGAAGAACCCTGGCAATCAGACACCTGTAATGCCCTCTGCCTCTCCATCTGCAT
 AGTCAAGGGAAGGAAAAAGCAGTTAGCAATAATGTAAACCCAGTAAAAACACAGCATCACTCCCATCCTG
 CAAAATCTTTAGTGGAACAATTCAGAGGAACAGATTGAGCATTCCCAGTAGTAAAGATTCTGAAGATTC
 AAATGAGGATGAAGAGGAAGATGATGAAGAAGAAGATGAGGAAGATGATGAAGATGATGAATCTGATGAC
 AGCCAATCAGAATCAGATAGTAATTCAGAATCAGATACAGAAGGATCAGAAGAAGAAGATGATGATGATA
 AAGACCAAGATGAATCAGATAGTGATACTGAAGGAGAGAAAACTCAATGAACTGAATAAAAACTTC
 CTCTGTCAAAAAGCCCTTCCATGAGTCTCACAGGCTCAACACCTCGTAACCTCCACATAGCAAAAAGCC
 CCAGGCTCTGCTCCTGCTGCCTTATGTTCTGAATCCCAGTCACCTGCTTTTCTTGGTACATCTTCTCCA
 CACTTACTTCAAGCCCACTCTGGCACTTCCAAAAGAAGAAGAGTAACAGATGAACGTGAACCTGCGTAT
 TCCATTGGAATATGGCTGGCAGAGAGACAAGAATAAGAACTTTGGAGGGCGCCTTCAAGGAGAAGTA
 GCATATTATGCTCCATGTGGAAGAACTTAGGCAGTACCCTGAAGTAATAAAGTATCTCAGCAGAAATG
 GAATAATGGATATCTCAAGGGACAATTTAGCTTCAGTGCAAAAATAAGAGTGGGTGACTTCTATGAAGC
 CAGAGATGGACCCAGGGAAATGCAGTGGTGTCTTTGAAAGAAGAGGATGTCATTCTCGTATCAGGGCA
 ATGGAAGGTCTAGAGGAAGACCACCAATCCAGATAGACAACGAGCAAGAGAGGAATCCAGGATGAGAC
 GTCGGAAGGTGACCTCCAAATGTTGGCAATGCTGAATTCCTAGATAACGCAGATGCAAAAGTGTCTAAG
 AAACTGCAAGCTCAAGAAATAGCCAGGCAAGCAGCACAATAAAGCTTTTGAGAAACTTCAAAAGCAG
 GAACAGGCTCGGGTTGCTAAAGAAGCCAAAAACAACAAGCAATAATGGCTGCTGAGGAGAAGCGGAAGC
 AAAAGAACAGATAAAGATTATGAAACAGCAGGAAAAAATTAAGAGAATACAGCAATCAGAATGGAAAA
 AGAACTTCGAGCTCAGCAATTTAGAGGCTAAAAAGAAAAGAAGGAAGAAGCGGCAATGCCAAATTA
 TTGGAGGCCGAGAAACGAATAAAGGAAAAAGAAATGAGAAGACAACAAGCTGTTCTTCTGAAACATCAGG
 AACGAGCGGAAGGCGACAACACATGATGCTTATGAAAGCTATGGAAGCTCGTAAAAAGCAGAAGAAAA
 AGAGCGGTTGAAACAAGAAAAACGTGATGAGAAAAAGATTAAATAAAGAGCGTAAACTAGAGCAGCGAAGA
 TTAGAATTAGAAATGGCAAGGAACTAAAGAAGCCTAATGAAGACATGTGCTTAGCAGACAAAAAGCCTT
 TGCCAGAGTTGCCTCGTATTCCAGGACTTGTCTCTGGAAGTACATTTTCACTGTCTCATGGTGGT
 GCAGTTCTACGAACTTTGGTAAAGTTTTGGGCTTTGATGTGAATATTGATGTTCCAACTGAGTGT
 CTTCAAGAGGGATTGCTAAATATAGGGGACAGCATGGGTGAAGTACAAGACTTGTGTGAGGCTCCTCT
 CAGCTGCTGTATGTATCCAGGTCTAATAACAGGATACAAGGCTAAAACAGCTTGGGAGAACATTTGCT
 GAATGTTGGTGTGAATCGAGACAATGTTCCGAGATTTACAGATATTTATGGAAGCCACTGTGGACAA
 ACTGAGCTTACTGAAAGTCTGAAGACCAAGCTTTTCAAGCTCACACTCCAGCACAGAAAGCTTCACTCC
 TGGCTTTCTGATCAATGAACTGGCATGCAGCAAGAGTGTGGTCAAGTAAATCGACAAGAACATTGATTA
 TATGTCAAACCTGAGGAGAGATAAATGGGTGGTGAAGGTAACCTCCGCAAGCTCAGAATCATTCATGCT
 AAGAAAACAGGCAAAAGAGACACTTCAGGTGGCATTGATCTGGGAGAAGAGCAGCATCCCTTGGGCACAC
 CCACTCCAGGACGCAAGCGAAGAAGGAAGGGAGGAGACAGTGAATTATGACGATGATGATGACGATGACAG
 TGATGACCAAGGGGATGAAGATGATGAGGATGAAGAAGATAAAGAAGACAAAAAGGAAAAAGACTGAT
 ATCTGTGAAGATGAGGATGAAGGTGACCAAGCAGCAAGTGTGAAGAGCTGGAAAAACAGATTGAAAAAC
 TGAGTAAACAACAGAGTCAGTACAGAAGGAAGCTCTTTGATGCGTCTCACTCATTGCGTTCAAGTATGTT
 TGGCCAAGATCGTTACAGACGCCGTAAGTCTTCCCAATGTGGGGGATTTTTGTGAAGGCAATG
 GAGAGTGGTGAAGGACTAGAAGAAATTGCAAAAAGAAAAGAAAACTGAAAAAGGCAAGAAAGTGTCCAGA
 TCAAAGAAGAAATGTTTGAAGTCTGAGGACAGTTTAAATTGTTCAAATACAGATCACTGTGAACAAAA
 GGAAGATCTTAAAGAAAAAGATAACACAATCTATTCCTTCAAGAACTGGCTCTTTTTCCAAATTAAGC
 AAGCTTTTGAAGTAGCTAAGATGCCTCCTGAGTCAGAGGTTATGACCCCAAACCAATGCTGGTGCAA
 ATGGGTGCACGTTGTCTTATCAGAACAGTGAAAAACATCACTGGGCAGCGTTCAGTCAACAGCAACGCA
 AAGCAATGTGGAAGGCGAGACTCTAATAATCTGTTTAACTGGTTCAAGTGGTCCAGGGAAGTCTAC
 AGTCTCTCCCAATGACCAGTTACTAAAACGCTGACTGAAAAGAATAGACAATGGTTTAGTCTTTTGC
 CACGAACACCCTGTGATGACACTTCACTTACTCATGCCGATATGTCAACTGCTTCTTTGGTACTCTCA
 GTCTCAGCCACCATCTAAGTCACTTCACTACCCAGCTCCTCTTGGATCTTCTGCTCAGAATCCTGTT
 GGCTTAAATCCATTTGCTTTATCACCTTCTCAGGTGAAAGGTGGAGTATCTATGATGGGACTTCAGTTTT
 GTGGATGGCCACTGGTGTGGTTACTTCTAATATTCCATTTACATCATCTGTACCTAGTCTAGGATCGGG
 GTTAGGGTTATCAGAAGGAAATGGTAATTCATTCTTGACTTCCAATGTTGCTTCAAGTAAAAGTGAATCT
 CCAGTACCACAGAATGAAAAGGCCACTTCAGCTCAACCTGCAGCTGTTGAAGTAGCAAAACCAAGTAGATT

TTCTAGTCCAAAACCTATTCCAGAAGAAATGCAGTTTGGTTGGTGGAGAATTATTGACCCAGAGGACCT
AAAAGCTTTGCTCAAAGTGTGCATCTCAGAGGAATAAGAGAAAAGGCATTACAAAAACAAATTCAGAAA
CATTTGGATTATTA TACTCAAGCCTGCCTCAAGAATAAGGATGTTGCTATTATTGAACTGAATGAAAATG
AAGAAAACCAAGTAACTCGAGATATTGTGGAGAACTGGTCAGTAGAAGAACAAGCAATGGAATGGATT
GAGTGTCTTCAACAGGTAGAAGATCTAGAAAGGAGAGTTGCATCAGCAAGTTTGCAAGTGAAGGGTTGG
ATGTGTCCAGAGCCTGCATCAGAAAGGGAGGACTTGGTATATTTTGAACATAAATCATTTACTAAATTTG
GCAAGGAGCATGATGGAGAATTTACTGGCGAAGACGAAAGCAGTGCACATGCACTAGAACGGAAGAGTGA
CAACCCCTAGATATAGCTGTAACCAGGCTGGCTGATTTGGAGCGGAACATTGAAAGAAGAATTGAAGAG
GATATTGCTCCAGGGCTCAGGGTATGGAGAAGGCATTATCAGAAGCTCGCAGTGTGCACAGGTAGCTC
TGTGCATTAGCAATTACAGAAATCAATAGCATGGGAAAAATCAATTATGAAAGTTTACTGCCAAATCTG
TCGAAAGGGAGATAATGAAGAAGTCTTCTTTGTGATGGCTGTGACAAAGGCTGTCATACCTACTGC
CATAGACCCAAGATTACAACAATCCAGATGGAGACTGGTTTTGTCCAGCTTGCATTGCTAAGGCAAGTG
GTCAAACCTAAAAATCAAAAACTTCAATGTCAAAGGAAAAAGACTAATGAGTCAAAGAAAGGCAAGAA
GGTAACTTTAACAGGAGATACTGAAGATGAAGACTCTGCATCTACAAGTAGTTCACTAAAAAGAGGAAAC
AAAGACCTCAAGAAAAGAAAAATGGAGGAAAACACTTCTATTAACCTGTCAAACAAGAAAGTTTTACTT
CAGTTAAGAAACCTAAAAGAGATGACTCCAAGGACCTAGCTCTTTGCAGTATGATTCTGACTGAAATGGA
AACTCATGAGGATGCATGGCCTTTTCTACTTCTGTAACCTGAAACTTGTTCCTGGTTATAAGAAAGTT
ATTAAGAAGCCTATGGATTTTCCACAATTAGAGAGAACTAAGTAGTGGACAGTATCCAAACCTTGAAA
CCTTTGCTCTAGATGTCAGGCTTGTTTTGACAACTGTGAAACATTTAATGAAGATGATTCTGATATAGG
CAGAGCTGGCCACAATATGAGGAAGTATTTGAAAAAAGTGGACAGATACTTTCAAAGTGAGC

ACGCGTACGCGGCCGCTCGAG - GFP Tag - GTTTAA

Protein Sequence: >RG221872 representing NM_013450
 Red=Cloning site Green=Tags(s)

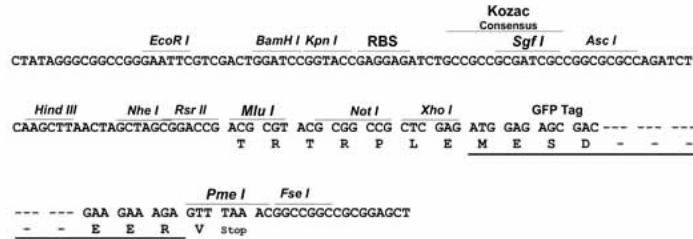
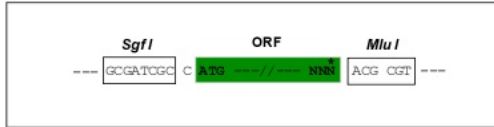
```
MESGERLPSSAASSTTPTSSSTPSVASVSVSKGGLSTGVASLSSTINPCGHLFRTAGDQPFNLSTVSSAFP
MVSHPVFGLHSASSGHSEFGGLGTLGTPALAAHPQLASFPGAEWRTTDAHTRTGATFFPPLLGIPLLF
APPAQNHDSSSFHSRTSGKSNRNGPEKGVNGSINGSNTSSVIGINTSVLSTTASSSMGQTKSTSSGGNR
KCNQEQSKNQPLDARVDKIKDKKPRKKAMESSNSDSDSGTSSDTSSEGISSSDSDLEEDDEEDQSIIE
ESEDSDSESEAQHKSNQVLLHGISDPKADGQKATEKAQEKRIHQPLPLASESQTHSFQSQKQPQVL
SQQLPFIQSSQAKEESVNKHTSVIQSTGLVSNVKPLSLVNQAKKETYMKLI VSPDVLKAGNKNTSEES
SLLTSELRSKREYKQAFPSQLKKQESSKSLKKVIAAALSNPKATSSSPAHPKQTLNHNHPNPFNTNALLG
NHQPNGVIQSVIQEAPLALTTKTKMQSKINENIAAASSTPFPSSPVNLSTSGRRTPGNQTPVMPASPIH
SQGKEKAVSNVNPVKTHHSHPAKSLVEQFRGTDSDIPSSKDESDSNEDEEEDDEEDEDDEDDSD
SQSESDSNSESDTEGSEEDDDDKDQDESDTEGEKTSMKLNKTTSSVKSPSMLTGHSTPRNLHIKA
PGSAPAALCSESQSPAFLTSSSTLTSSPHSGTSKRRRVTDERELRIPLYGWQRETRIRNFGGRLQGEV
AYYAPCGKCLRQYPEVIKYL SRNGIMDISRDNFSFAKIRVGFYEARDGPQGMQWCLLKEEDVIPRIRA
MEGRRGRPPNDRQARAREESRMRRRKGRPPNVGNAEFLDNADAKLLRKLQAQEIARQAAQIKLLRKLQKQ
EQARVAKEAKKQQAIAAAEKKRQKEQIKIMKQEQEKIRIQQIRMEKELRAQQILEAKKKKKEEAANAKL
LEAEKRIKEKEMRRQAVLLKHQERERRRQHMLMKAMEARKKAEKERLQKEKRDEKRLNKERKLEQRR
LELEMAKELKKNEDMCLADQKPLPELPRIPGLVLSGSTFSDCLMVVQFLRNFGKVLGFDVNIIDVNLV
LQEGLLNIGDSMGEVQDLLVRLLSAAVCDPGLITGYKAKTALGEHLLNVGNVNRDNVSEILQIFMEAHCGQ
TELTESLKTAKFAHTPAQKASVLAFLINELACSKSVSEIDKNIDYMSNLRDKWVVEGKLRKLRRIIHA
KKTGKRDTSGGIDL GEEQHPLGTPTPGRKRRRKGGSDYDDDDDDSDDQDEDEDEEDKEDKGGKKT
ICEDEDEGDQAASVEELEKQIEKLSKQSQYRRKLF DASHSLRSVMFGQDRYRRRYWILPQCGGIFVEGM
ESGEGLEETAKEREKLLKAE SVQIKEEMFETSGDSLNCNNDHCEQKEDLKEKDNTNLF LQKPGSFSKLS
KLLLEVAKMPPESEVMTPKPNAGANGCTLSYQNSGKHSLSVQSTATQSNVEKADSNL FNTGSSGPKFY
SPLPNDQLLKTLEKNRQWFSLLPRTPCDDTSLTHADMSTASLVTPQSQPPSKSPSPAPLGSQAQNPV
GLNPFAL SPLQVKGVSMMGLQFCGWPTGVVTSNIPFTSSVPSLGSGLG LSEGNGNSFLTSNVASSKSES
PVPQNEKATSAQPAAVEVAKPVDFPSPKPIPEEMQFGWWRIIDPEDLKALLKVLHLRGIREKALQKQIQK
HLDYITQACLKNKDVAI IELNENEENQVTRDIVENWSVEEQAMEMDLSVLQQVEDLERRVASASLQVKGW
MCPEPASEREDLVYFEHKSFTLCKEHDGEFTGEDESSAHALERKSDNPLDI AVTRLADLERNIERRIEE
DIAPGLRVRRALSEARSAAQVALCIQQLQKSI AWEKSIMKVYQICRKGDN EELLLL CDGCDKGCHTYC
HRPKITITIPDGDWFCPACIAKASGQTLKIKKLVHVGKKTNESKKGKVTLTG DTEDEDSASTSSSLKRG
KDLKKRMEENTSINLSKQESFTSVKPKRDDS KDLALCSMILTEMETHEDAWPFLLPVNLKLVPGYKKV
IKKPMDFSTIREKLSGQYPNLETFALDVRLVFDNCETFNEDSDIGRAGHNMRYFEKKWDTDFKVS
```

TRTRPLE – GFP Tag – V

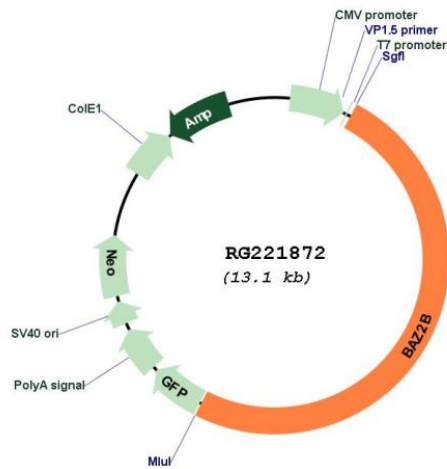
Restriction Sites: Sgfl-MluI

Cloning Scheme:

Cloning sites used for ORF Shutting:



Plasmid Map:



ACCN: NM_013450
 ORF Size: 6504 bp

OTI Disclaimer: Due to the inherent nature of this plasmid, standard methods to replicate additional amounts of DNA in E. coli are highly likely to result in mutations and/or rearrangements. Therefore, OriGene does not guarantee the capability to replicate this plasmid DNA. Additional amounts of DNA can be purchased from OriGene with batch-specific, full-sequence verification at a reduced cost. Please contact our customer care team at custsupport@origene.com or by calling 301.340.3188 option 3 for pricing and delivery.

The molecular sequence of this clone aligns with the gene accession number as a point of reference only. However, individual transcript sequences of the same gene can differ through naturally occurring variations (e.g. polymorphisms), each with its own valid existence. This clone is substantially in agreement with the reference, but a complete review of all prevailing variants is recommended prior to use. [More info](#)

OTI Annotation: This clone was engineered to express the complete ORF with an expression tag. Expression varies depending on the nature of the gene.

Components: The ORF clone is ion-exchange column purified and shipped in a 2D barcoded Matrix tube containing 10ug of transfection-ready, dried plasmid DNA (reconstitute with 100 ul of water).

Reconstitution Method:

1. Centrifuge at 5,000xg for 5min.
2. Carefully open the tube and add 100ul of sterile water to dissolve the DNA.
3. Close the tube and incubate for 10 minutes at room temperature.
4. Briefly vortex the tube and then do a quick spin (less than 5000xg) to concentrate the liquid at the bottom.
5. Store the suspended plasmid at -20°C. The DNA is stable for at least one year from date of shipping when stored at -20°C.

RefSeq: [NM_013450.4](#)

RefSeq Size: 8145 bp

RefSeq ORF: 6507 bp

Locus ID: 29994

UniProt ID: [Q9UIF8](#)

Cytogenetics: 2q24.2

Domains: BROMO, MBD, PHD, DDT

Protein Families: Druggable Genome

Gene Summary: This gene belongs to the bromodomain gene family. Members of this gene family encode proteins that are integral components of chromatin remodeling complexes. The encoded protein showed strong preference for the activating H3K14Ac mark in a histone peptide screen, suggesting a potential role in transcriptional activation. This gene may be associated with susceptibility to sudden cardiac death (SCD). [provided by RefSeq, Aug 2016]