

## Product datasheet for **RG221856**

### **DLGAP1 (NM\_001003809) Human Tagged ORF Clone**

#### **Product data:**

Product Type:	Expression Plasmids
Product Name:	DLGAP1 (NM_001003809) Human Tagged ORF Clone
Tag:	TurboGFP
Symbol:	DLGAP1
Synonyms:	DAP-1; DAP-1-ALPHA; DAP-1-BETA; DAP1; DLGAP1A; DLGAP1B; GKAP; SAPAP1
Mammalian Cell Selection:	Neomycin
Vector:	pCMV6-AC-GFP (PS100010)
E. coli Selection:	Ampicillin (100 ug/mL)



[View online »](#)

ORF Nucleotide  
Sequence:

>RG221856 representing NM\_001003809  
Red=Cloning site Blue=ORF Green=Tags(s)

TTTTGTAATACGACTCACTATAGGGCGGCCGGAATTCGTCGACTGGATCCGGTACCGAGGAGATCTGCC  
GCCGCGATCGCC

ATGAACCTAATTTCCATAAAGACATTCTGTTGGCATTCCAGCTAATAAGGTTCCACAAGATGAATGGA  
CAGGGTACACCCACGAGGTAAAGATGATGAAATTCATGCCGAAGAATGCGGAGTGGCAGTTATATCAA  
GGCCATGGGGATGAAGACAGTGGAGACTCAGACACGAGTCTAAGCCTTCTCCAAAAGTTGCTGCGCGG  
AGAGAAAGCTATCTCAAGGCTACTCAGCCATCCCTTACAGAACTCACCACACTCAAAATCTCCAATGAAC  
ACTCACCCAAACTCCAGATCCGGAGTCATGTTACCTGAGGGCAGTGAAGTCTCCATCAACCCGGAG  
CCTGGACAGCCTGGACCCTGCAGGCTTGCTCACATCACAAAGTTCGGCTCCAGGAATGAGAGCTACATG  
CGAGCCATGAGCACCATCAGCCAGGTGAGCGAGATGGAAGTGAACGGGCAGTTCGAGTCCGTGTGCGAGT  
CCGTGTTACGCGAGCTGGAGTCGACGGCCGTGGAAGCGCTGGACCTGCCATGCCCGGCTGCTCCGCAT  
GCGGAGCCACAGCTATGTGCGGGCCATTGAGAAAGGCTGCTCCAGGACGACGAGTGCCTGTCCCTGAGG  
TCGTCTCGCCGCGCGCACACCACCACCGTTAGGACCATCCAGAGCAGCACGGTGTCTCTTGCATTA  
CAACATATAAGAAGACACCACCTCCAGTCCCACCAGAATACCACGAAACCTTTTCAATTTCTATCAGC  
CCAGAGTAGCACAGAGTCAAGCCAGGATGCCTACATGGACGGACAGGGCCAGCGAGGAGATATTACAGC  
CAGTCTGGACTCAGCAACTCCACCGAGAGCCTGGACAGTATGAAGGCTCTGACAGCCGCCATCGAAGCTG  
CAAACGCCAGATCCATGGCCCTGCCAGTCAACACATGGGCAATAACACTGCCACTGTACCACCACGAC  
TACCATAGCCACCGTACCACGGAGGACAGGAAGAAGGACCACCTTAAGAAAAATCGATGCCTGTCTATC  
GGGATACAGGTGGATGATGCTGAAGAACCTGACAAAACAGGGGAGAATAAAGCACCAGTAAGTTCCAGT  
CCGTGGGAGTGCAAGTAGAAGAAGAGAAGTCTTCCGAGTTCACTCGATCCAACAGTGTGACGACAGC  
AGTACAGGCCGACCTGGACTTCCATGATAATCTGGAAAATTCTCTGGAATCTATAGAGGACAATTGCTGT  
CCTGGCCCATGGCCAGACAGTTCTCCCGCATGCCAGCACCTCCACAGTCAAGTTCAGGGCTCAGGAA  
ACCATTACCATGCCTGTGCCCGCATGATGACTTTGACACGGATTTTGACCCCTCTATTCTGCCTCCTCC  
GGACCCCTGGATTGACTCTATCACTGAAGACCCTCTGGAGGCCGTGCAAAGGTCAGTGTGCCACCGGGAT  
GGCCACTGGTTCTGAAGCTTCTCAGGCAGAGCGAGACCAGTGGAGGGGTGGTGTCAACAGATGGAGC  
GGGAAGAACGGGAAAACAACCTGCCGAAGACATTCTAGGAAAAATCCGAACCGCAGTGGGCAGTGCCCA  
ACTTCTCATGGCCAGAAATTTACCAGTTCAGAGAACTGTGTGAAGAAAACCTGAATCCTAATGCTCAT  
CCAAGACCACCTCCAGGATTTGGCGGGTTTTGGGACATGCTGCAGTGTCCATAGAAAATATTAGTA  
TGAATTTGATGAACTTCATCAGTTAAAGGCCAATAATTGGAAACAGATGGATCCTCTTGACAAGAAGGA  
GAGAAGGGCCCTCCTCCAGTGCCAAAGAAGCCGGCGAAGGGCCCGCGCGCTGATCCGGGAGCGCTCG  
CTGGAGAGCTCGCAGCGCCAGGAGGCCGCAAGCGCCTGATGGCCGCAAGCGCGCCGCTCCGTCCGCC  
AGAACTCGGCCACCGAGAGCGCCGAGAGCATCGAGATCTACATCCCCGAGGCGCAGACCCGGCTC

ACGCGTACGCGGCCGCTCGAG - GFP Tag - GTTTAA

**Protein Sequence:** >RG221856 representing NM\_001003809  
 Red=Cloning site Green=Tags(s)

MNLIFHKDILFGIPANKVPQDEWTGYTPRGKDDEIPCRRMRSGSYIKAMGDEDSGSDTSPKPSPKVAAR  
 RESYLKATQPSL TEL TTLKISNEHSPKLQIRSHSYLRVSEVSIINRSLDLPAGLLTSPKFRSRNESYM  
 RAMSTISQVSEMEVNGQFESVCEVSFSELESQAVEALDLPMPGCFMRSHSYVRAIEKGCSQDDECVSLR  
 SSSPPRTTTTVRTIQSSTVSSCITTYKTPPPVPPRTTTKPFISITAQSSTESAQDAYMDGQGQRGDIIS  
 QSGLSNSTESLDSMKALTAIEAANAQIHGPASQHMGNNTATVTTTTIATVTTEDRKKDHFKNRCLSI  
 GIQVDDAEEPDKTGENKAPSKFQSVGVQVEEEKCFRRFTRNSVTTAVQADLDFHDNLENSLESIEDNSC  
 PGPMARQFSRDASTSTVSIQSGNHYHACAADDDFDTFDPSILPPDPWIDSITEDPLEAVQRSVCHRDR  
 GHWFLLKQAERDRMEGWCCQMEREEENLPEDILGKIRTAVGSAQLLMAQKFYQFRELCEENLPNAH  
 PRPTSQDLAGFDMLQLSIENISMKFDELHQLKANNWKQMDPLDKKERRAPPVPPKPKPAKPAPLIRERS  
 LESSQRQEARKRLMAAKRAASVRQNSATESAESIEIYIPEAQTRL

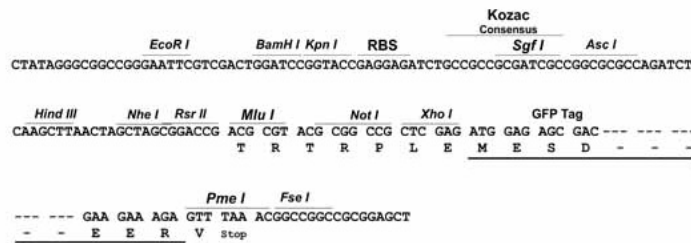
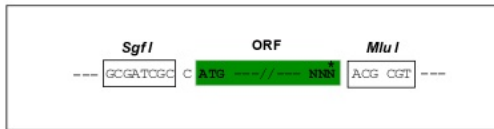
TRTRPLE - GFP Tag - V

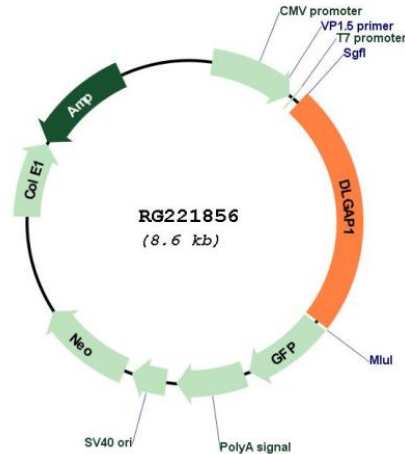
**Restriction Sites:**

Sgfl-MluI

**Cloning Scheme:**

Cloning sites used for ORF Shuttling:



**Plasmid Map:**


**ACCN:** NM\_001003809

**ORF Size:** 2025 bp

**OTI Disclaimer:** The molecular sequence of this clone aligns with the gene accession number as a point of reference only. However, individual transcript sequences of the same gene can differ through naturally occurring variations (e.g. polymorphisms), each with its own valid existence. This clone is substantially in agreement with the reference, but a complete review of all prevailing variants is recommended prior to use. [More info](#)

**OTI Annotation:** This clone was engineered to express the complete ORF with an expression tag. Expression varies depending on the nature of the gene.

**Components:** The ORF clone is ion-exchange column purified and shipped in a 2D barcoded Matrix tube containing 10ug of transfection-ready, dried plasmid DNA (reconstitute with 100 ul of water).

**Reconstitution Method:**

1. Centrifuge at 5,000xg for 5min.
2. Carefully open the tube and add 100ul of sterile water to dissolve the DNA.
3. Close the tube and incubate for 10 minutes at room temperature.
4. Briefly vortex the tube and then do a quick spin (less than 5000xg) to concentrate the liquid at the bottom.
5. Store the suspended plasmid at -20°C. The DNA is stable for at least one year from date of shipping when stored at -20°C.

**RefSeq:** [NM\\_001003809.1](#), [NP\\_001003809.1](#)

RefSeq Size: 2393 bp  
RefSeq ORF: 2028 bp  
Locus ID: 9229  
UniProt ID: [O14490](#)  
Cytogenetics: 18p11.31  
Gene Summary: Part of the postsynaptic scaffold in neuronal cells.[UniProtKB/Swiss-Prot Function]