

Product datasheet for **RG221828**

UPF3B (NM_023010) Human Tagged ORF Clone

Product data:

Product Type:	Expression Plasmids
Product Name:	UPF3B (NM_023010) Human Tagged ORF Clone
Tag:	TurboGFP
Symbol:	UPF3B
Synonyms:	HUPF3B; MRX62; MRX82; MRXS14; RENT3B; UPF3BP1; UPF3BP2; UPF3BP3; Upf3p-X; UPF3X
Mammalian Cell Selection:	Neomycin
Vector:	pCMV6-AC-GFP (PS100010)
E. coli Selection:	Ampicillin (100 ug/mL)



[View online »](#)

ORF Nucleotide Sequence:

>RG221828 representing NM_023010
 Red=Cloning site Blue=ORF Green=Tags(s)

TTTTGTAATACGACTCACTATAGGGCGGCCGGGAATTCGTCGACTGGATCCGGTACCGAGGAGATCTGCC
 GCCCGCATCGCC

ATGAAGGAAGAGAAGGAGCACAGGCCTAAGGAGAAGCGAGTAACCTGTAAACCCCGCCGGGGCCACAG
 GCAGCGGTGGTGGGACCTCGGGGACAGCTCCAAGGGGAAGATAAGCAGGATCGCAACAAGGAGAAGAA
 AGAAGCGCTGAGCAAGGTGGTAATTCGAAGATTACCTCCCACTTTGACCAAGGAGCAGCTTCAGGAACAT
 CTTCAACCTATGCCTGAGCATGATTATTTTGAGTTTTTTCTAATGATACGAGTTTGATCCTCATATGT
 ATGCCAGAGCATACATCAACTTTAAAAACCAAGAGGACATTATTTTGTCAGGGATCGCTTTGATGGTTA
 TGTATTCCTTGACAATAAAGGTGAGGAATATCCCGCTATAGTAGAATTTGCACCTTTTCAAAAAGCTGCA
 AAAAAGAAGACTAAGAAAAGAGATACCAAAGTCGGGACTATCGATGATGATCCAGAATATAGAAAGTTTT
 TGGAAAGTTATGCCACAGATAATGAGAAAATGACATCTACTCCAGAGACACTGCTAGAGGAAATAGAAGC
 AAAAAATAGAGAATTAATAGCTAAAAAGACAACCCCACTTTTGAGCTTCCTGAAAAACAAGCAGAGAATG
 AGAGAAGAAAAGAGAGAGAAAGGAGGAGAGAGAAATAGAAAGAAAAAGACAAAGAGAAGAAGAGAGGA
 GGAAATGGAAAGAAGAAGAGAAACGAAAAAGGAAAGATATAGAAAAGCTAAAGAAGATAGACAGAATTCC
 AGAAAGGGACAAATTAAGGATGAACCAAAGATTAAGCTGCTCAAGAAGCCAGAAAAAGGAGATGAAAA
 GAATTGGACAAAAGAGAAAAAGCCAAGAAATTGGACAAAGAGAATCTCAGTGATGAAAGAGCCAGTGGGC
 AAAGTTGTACATTGCCAAGCGTTCTGATAGCGAACTTAAGATGAAAAACCAAGAGACCTGAAGATGA
 GAGCGGCAGAGACTATAGGGAGAGGGAACGGGAATATGAACGAGATCAGGAGCACATACTTCGAGAAAGA
 GAGAGGCTGAAGCGGCAAGAAGAAGAGCGCCGTAGGCAGAAGGAGCGCTATGAGAAAGAGAAGACTTTTA
 AGAGAAAAGAAGAAGAAATGAAAAAGAGAAAGACACACTTCGGGATAAGGAAAAGAAGGCTGAAAGTAC
 AGAATCAATAGGCAGCTCAGAAAAAAGTAAAAAGAAAGAAGTGGTCAAGAGAGATCGAATAAGAAAC
 AAGGATCGTCCAGCGATGCAGCTTTACCAACCAGGAGCTCGAAGCCGAAATCGACTCTGTCCCCCTGATG
 ACAGCACCAAGTCTGGAGATTCAGCAGCAGAAAGGAAGCAGGAAAGTGGTATTAGCCATAGAAAAGAAGG
 AGGAGAGGAG

ACGCGTACGCGGCCGCTCGAG – GFP Tag – GTTTAA

Protein Sequence:

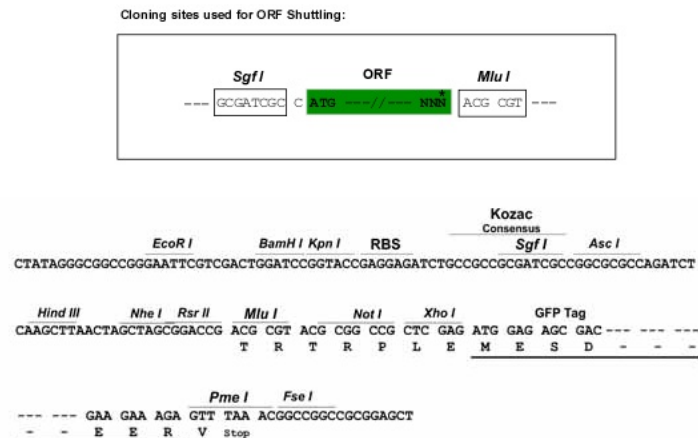
>RG221828 representing NM_023010
 Red=Cloning site Green=Tags(s)

MKEEKEHRPKEKRVTLTPAGATGSGGGTSGDSSKGEDKQDRNKEKKEALSKVVIRRLPPTLTKEQLQEH
 LQPMPEHDYFEFFSNDTSLYPHYARAYINFKNQEDIILFRDRFDGYVFLDNKGQEYPAIVEFAPFQKAA
 KKKTKKRDTKVGTIDDDPEYRKFLSYATDNEKMTSTPETLLEEIEAKNRELIAKKTTPLLSFLKNKQRM
 REEKREERRRREIERKQREERERKWKKEEKRRKDIEKLKKIDRIPERDKLKDEPKIKLLKKPEKGDEK
 ELDKREKAKKLDKENLSDERASGQSCTLPKRSDSELKDEKPKRPEDESGRDYRERERERDQEHILRER
 ERLKRQEEERRRQKERYEKEKTFKRKEEEMKKEKDTLDRKGKKAESTESIGSSEKTEKKEEVVVRDRIRN
 KDRPAMQLYQPGARSNRLCPPDDSTKSGDSAAERKQESGISHRKEGGEE

TRTRPLE – GFP Tag – V

Restriction Sites:

Sgfl-MluI

Cloning Scheme:


ACCN: NM_023010

ORF Size: 1410 bp

OTI Disclaimer: The molecular sequence of this clone aligns with the gene accession number as a point of reference only. However, individual transcript sequences of the same gene can differ through naturally occurring variations (e.g. polymorphisms), each with its own valid existence. This clone is substantially in agreement with the reference, but a complete review of all prevailing variants is recommended prior to use. [More info](#)

OTI Annotation: This clone was engineered to express the complete ORF with an expression tag. Expression varies depending on the nature of the gene.

Components: The ORF clone is ion-exchange column purified and shipped in a 2D barcoded Matrix tube containing 10ug of transfection-ready, dried plasmid DNA (reconstitute with 100 ul of water).

Reconstitution Method:

1. Centrifuge at 5,000xg for 5min.
2. Carefully open the tube and add 100ul of sterile water to dissolve the DNA.
3. Close the tube and incubate for 10 minutes at room temperature.
4. Briefly vortex the tube and then do a quick spin (less than 5000xg) to concentrate the liquid at the bottom.
5. Store the suspended plasmid at -20°C. The DNA is stable for at least one year from date of shipping when stored at -20°C.

Note: Plasmids are not sterile. For experiments where strict sterility is required, filtration with 0.22um filter is required.

RefSeq: [NM_023010.2](#), [NP_075386.1](#)

RefSeq Size: 2342 bp

RefSeq ORF: 1413 bp

Locus ID: 65109

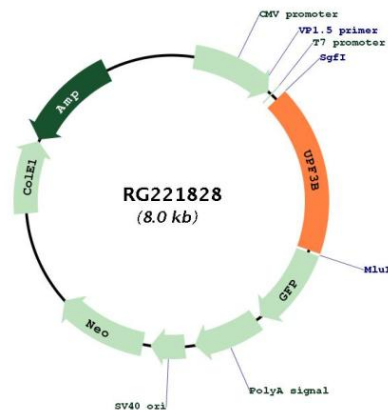
UniProt ID: [Q9BZI7](#)

Cytogenetics: Xq24

Domains: Smg4_UPF3

Gene Summary: This gene encodes a protein that is part of a post-splicing multiprotein complex involved in both mRNA nuclear export and mRNA surveillance. The encoded protein is one of two functional homologs to yeast Upf3p. mRNA surveillance detects exported mRNAs with truncated open reading frames and initiates nonsense-mediated mRNA decay (NMD). When translation ends upstream from the last exon-exon junction, this triggers NMD to degrade mRNAs containing premature stop codons. This protein binds to the mRNA and remains bound after nuclear export, acting as a nucleocytoplasmic shuttling protein. It forms with Y14 a complex that binds specifically 20 nt upstream of exon-exon junctions. This gene is located on the long arm of chromosome X. Two splice variants encoding different isoforms have been found for this gene. [provided by RefSeq, Jul 2008]

Product images:



Circular map for RG221828