

Product datasheet for **RG221812**

Nav1.8 (SCN10A) (NM_006514) Human Tagged ORF Clone

Product data:

Product Type:	Expression Plasmids
Product Name:	Nav1.8 (SCN10A) (NM_006514) Human Tagged ORF Clone
Tag:	TurboGFP
Symbol:	Nav1.8
Synonyms:	FEPS2; Nav1.8; PN3; SNS
Mammalian Cell Selection:	Neomycin
Vector:	pCMV6-AC-GFP (PS100010)
E. coli Selection:	Ampicillin (100 ug/mL)
ORF Nucleotide Sequence:	>RG221812 representing NM_006514 Red=Cloning site Blue=ORF Green=Tags(s)

TTTTGTAATACGACTCACTATAGGGCGGCCGGAATTCGTCGACTGGATCCGGTACCGAGGAGATCTGCC
GCC**CGATCGCC**

ATGGAATCCCCATTGGATCCCTCGAACTAACAACTCCGTCGCTTTACTCCGGAGTCACTGGTGGAGA
TAGAGAAGCAAATTGCTGCCAAGCAGGGAAACAAAGAAAGCCAGAGAGAAGCATAGGGAGCAGAAGGACCA
AGAAGAGAAGCCTCGGCCAGCTGGACTTGAAAGCCTGCAACCAGCTGCCCAAGTTCTATGGTGAAGTC
CCAGCAGAAGTATCGGGAGCCCTGGAGGATCTAGATCCGTTCTACAGCACACACCCGGACATTTATGG
TGCTGAACAAAGGGAGGACCATTTCCCGTTTAGTGCCACTCGGGCCCTGTGGCTATTCAGTCCTTTCAA
CCTGATCAGAAGAACGGCCATCAAAGTGTCTGTCCACTCGTGGTTCAAGTTATTTATTACGGTCACTATT
TTGGTTAATTGTGTGTCATGACCCGAAGTACCTTCCAGAGAAAATTGAATATGTCTTCACTGTCAATT
ACACCTTTGAAGCCTTGATAAAGATACTGGCAAGAGGATTTTGTCTAAATGAGTTCACGTACCTGAGAGA
TCCTTGGAAGTGGCTGGATTTTAGCGTCATTACCTGGCATATGTTGGCAGCAATAGATCTCCGTGGG
ATCTCAGGCCTGCGGACATTCAGAGTCTTAGAGCATTAAAAACAGTTTCTGTGATCCCAGGCCTGAAGG
TCATTGTGGGGCCCTGATTCACCTCAGTGAAGAACTGGCTGATGTGACCATCCTCACCATCTTCTGCCT
AAGTGTTTTTGCCTTGGTGGGCTGCAACTCTCAAGGGCAACCTCAAAAATAAATGTGTCAAGAATGAC
ATGGCTGTCAATGAGACAACCACTACTCATCTCACAGAAAACAGATATCTACATAAATAAGCGAGGCA
TTCTGACCCCTTACTGTGTGGCAATGGATCTGACTCAGGCCACTGCCCTGATGGTTATATCTGCCTTAA
AACTTCTGACAACCCGGATTTTAACTACACCAGCTTTGATTCTTTGCTTGGGCTTTCCTCTCACTGTTT
CGCCTCATGACACAGGATTCCTGGGAACGCTCTACCAGCAGACCCTGAGGACTTCTGGGAAAATCTATA
TGATCTTTTTGTGCTCGTAATCTTCTGGGATCTTTCTACCTGGTCAACTTGATCTTGGCTGTAGTCAC
CATGGCGTATGAGGAGCAGAACCAGGCAACCCTGATGAAATTGAAGCAAAGGAGAAGAAGTCCAGGAG
GCCCTCGAGATGCTCCGGAAGGAGCAGGAGGTGCTAGCAGCACTAGGGATTGACACAACCTCTCTCCACT
CCCACAATGGATCACCTTAACTCCAAAATGCCAGTGAGAGAAGGCATAGAATAAAGCCAAGAGTGTCT
AGAGGGCTCCACAGAAGACAACAATCACCCGCTCTGATCCTTACAACCAGCGCAGGATGTCTTTTCTA



[View online »](#)

GGCCTCGCCTCTGGAAAACGCCGGGCTAGTCATGGCAGTGTGTTCCATTTCCGGTCCCCTGGCCGAGATA
TCTCACTCCCTGAGGGAGTCACAGATGATGGAGTCTTTCCTGGAGACCACGAAAGCCATCGGGGCTCTCT
GCTGCTGGGTGGGGTGTGGCCAGCAAGGCCCTCCCTAGAAGCCCTTTCCTCAACCCAGCAACCTT
GACTCCAGGCATGGAGAAGATGAACACCAACCGCCGCCCCTAGTGAGCTTGCCCTGGAGCTGTCGATG
TCTCGGCATTTCGATGCAGGACAAAAGAAGACTTCTTGTGAGCAGAATACTTAGATGAACCTTTCGGGC
CCAAAGGGCAATGAGTGTGTCAGTATCATAACCTCCGTCCTTGAGGAACTCGAGGAGTCTGAACAGAAG
TGCCACCCCTGCTTGACCAGCTTGTCTCAGAAGTATCTGATCTGGGATTGCTGCCCATGGGGTGAAGC
TCAAGACAATTCTTTGGGCTTGTGACGGATCCCTTTGACAGAGCTCACCATCACCTTGTGCATCGTG
GAACACCATCTTCATGGCCATGGAGCACCATGGCATGAGCCCTACCTTCGAAGCCATGCTCCAGATAGGC
AACATCGTCTTTACCATATTTTTACTGCTGAAATGGTCTTCAAATCATTGCCTTCGACCATACTATT
ATTTCCAGAAGAAGTGAATATCTTTGACTGCATCATCGTCACTGTGAGTCTGCTAGAGCTGGGCGTGGC
CAAGAAGGGAAGCCTGTCTGTGCTGCGGAGCTTCCGCTTGTGCGCGTATTCAAGCTGGCCAAATCTGG
CCCACCTTAAACACACTCATCAAGATCATCGGAACTCAGTGGGGGCACTGGGGAACCTCACCATCATCC
TGGCCATCATTGTCTTTGCTTTGCTCTGGTTGGCAAGCAGCTCCTAGGGGAAAACCTACCGTAACAACCG
AAAAAATATCTCCGCGCCCATGAAGACTGGCCCCGCTGGCACATGCACGACTTCTTCCACTTTTCCCTC
ATTGCTTCCGTATCCTCTGTGGAGAGTGGATTGAGAACATGTGGGCCTGCATGGAAGTTGGCCAAAAAT
CCATATGCCTCATCCTTTTCTTGACGGTGTGGTCTAGGGAACCTGGTGGTGTAACTGTTTCATCGC
CCTGCTATTGAACTCTTTCAGTGTGACAACTCACAGCCCCGGAGGACGATGGGGAGGTGAACAACCTG
CAGGTGGCCCTGGCAGGATCCAGGTCTTTGGCCATCGTACCAACAGGCTCTTTCGAGCTTCTTCAGCA
GGTCTGCCCATCCCCAGCCCAAGGCAGAGCCTGAGCTGGTGGTGAACCTCCACTCTCCAGCTCCAA
GGCTGAGAACCACATTGCTGCCAACACTGCCAGGGGAGCTCTGGAGGGCTCCAAGCTCCAGAGGCCCC
AGGGATGAGCACAGTGAATTCATCGTAATCCGACTGTGTGGTCTCTGTGCCATTGCTGAGGGTGAAT
CTGATCTTGACTTGGAGGATGATGGTGGGGAAGATGCTCAGAGCTTCCAGCAGAAGTGTCCCAAA
AGGACAGCAGGAGCAGCTGCAGCAAGTCGAGAGGTGTGGGGACCCTGACACCCAGGAGCCAGGCACT
GGAACATCTTCTGAGGACCTGGCTCCATCCCTGGGTGAGACGTGGAAGATGAGTCTGTTCTCAGTCC
CTGCTGAGGGAGTGGACGACACAAGCTCCTCTGAGGGCAGCACGGTGGACTGCCTAGATCCTGAGGAAAT
CCTGAGGAAGATCCCTGAGCTGGCAGATGACCTGGAAGAACCAGATGACTGCTTCACAGAAGGATGCATT
CGCCACTGTCCCTGTGCAAACCTGGATACCACCAAGAGTCCATGGGATGTGGGCTGGCAGGTGCGCAAGA
CTTGCTACCGTATCGTGGAGCACAGCTGGTTTGGAGCTTTCATCATCTTCATGATCCTGCTCAGCAGTGG
ATCTCTGGCCTTTGAAGACTATTACCTGGACCAGAAGCCACGGTGAAGCTTTGCTGGAGTACACTGAC
AGGGTCTTCACCTTTATCTTTGTGTTGAGATGCTGCTTAAAGTGGTGGCCTATGGCTTCAAAAAGTACT
TACCAATGCCTGGTGTGGCTGGACTTCTCATTGTGAATATCTCACTGATAAGTCTCACAGCGAAGAT
TCTGGAATATTCTGAAGTGGCTCCCATCAAAGCCCTTCGAACCTTTCGCGCTCTGCGGCCACTGCGGGCT
CTTTCTCGATTTGAAGGCATGCGGGTGGTGGTGGATGCCCTGGTGGGCGCCATCCCATCCATCATGAATG
TCCTCCTCGTCTGCCTCATCTTCTGGCTCATCTTCAGCATCATGGGTGTGAACCTCTTCGAGGGAAGTT
TTGGAGGTGCATCAACTATACCGATGGAGAGTTTTCCCTTGTACCTTTGTGCGATTGTGAATAACAAGTCT
GACTGCAAGATTCAAACTCCACTGGCAGCTTCTTCTGGGTCAATGTGAAAGTCAACTTTGATAATGTTG
CAATGGGTTACCTTGACTTCTGCAGGTGGCAACCTTTAAAGGCTGGATGGACATTATGTATGCAGCTGT
TGATTTCCGGGAGGTCAACATGCAACCCAAGTGGGAGGACAACGTGTACATGATTTGTACTTTGTCATC
TTCATCATTTTTGGAGGCTTCTTCACACTGAATCTCTTTGTTGGGTCAATAATTGACAACCTCAATCAAC
AGAAAAAAAGTTAGGGGCCAGGACATCTTCATGACAGAGGAGCAGAAGAAGTACTACAATGCCATGAA
GAAGTTGGGCTCCAAGAAGCCCCAGAAGCCATCCCACGGCCCTGAACAAGTTCAGGGTTTTGTCTTT
GACATCGTGACCAGACAAGCTTTTACATCACCATCATGGTCTCATCTGCCTCAACATGATCACCATGA
TGGTGGAGACTGATGACCAAGTGAAGAAAAGACGAAAATTCTGGGCAAAATCAACCAGTCTTTGTGGC
CGTCTTACAGGCGAATGTGTATGAAGATGTTGCTTTGAGGCAGTACTACTTCACAAATGGCTGGAAT
GTGTTGACTTCAATTGTGGTGGTCTCTCCATTGCGAGCCTGATTTTTTCTGCAATTCTTAAGTCACTTC
AAAGTTACTTCTCCCAACGCTTCTCAGAGTCATCCGCTGGCCGAATTGGCCGCATCCTCAGACTGAT
CCGAGCGGCCAAGGGGATCCGCACACTGCTCTTTGCCCTCATGATGTCCCTGCCTGCCCTTTCAACATC
GGGCTGTTGCTATTCTTGTGATGTTCTACTCCATCTTCGGTATGTCCAGCTTTCCCATGTGAGGT
GGGAGGCTGGCATCGACGACATGTTCAACTTCCAGACCTTCGCCAACAGCATGCTGTGCCTCTTCCAGAT
TACCACGTCCGGCCGGTGGGATGGCCTCCTCAGCCCCATCTCAACACAGGGCCCCCTACTGTGACCCC
AATCTGCCAACAGCAATGGCACCAGAGGGGACTGTGGGAGCCAGCCGTAGGCATCATCTTCTTCCACCA

CCTACATCATCTCCTTCTCATCGTGGTCAACATGTACATTGCAGTGATTCTGGAGAACTTCAATGT
 GGCCACGGAGGAGACTGAGCCCCTGAGTGAGGACGACTTTGACATGTTCTATGAGACCTGGGAGAAG
 TTTGACCCAGAGGCCACTCAGTTTATTACCTTTTCTGCTCTCGGACTTTGCAGACACTCTCTGGTC
 CCCTGAGAATCCAAAACCAATCGAAATATACTGATCCAGATGGACCTGCCTTTGGTCCCTGGAGATAA
 GATCCACTGCTTGGACATCCTTTTTGCTTTCACCAAGAATGTCTAGGAGAATCCGGGGAGTTGGATTCT
 CTGAAGGCAAATATGGAGGAGAAGTTTATGGCACTAATCTTTCAAATCATCTATGAACCAATAGCAA
 CCACTCTCCGATGGAAGCAAGAAGACATTTAGCCACTGTCATTCAAAGGCCTATCGGAGCTATGTGCT
 GCACCGCTCCATGGCACTCTAACACCCCATGTGTGCCAGAGCTGAGGAGGAGGCTACACTCCCA
 GATGAAGTTTTGTTGCATTACAGCAAATGAAAATTGTACTCCAGACAAATCTGAACTGTTCTG
 CCACATCATCCACCGTCTATGAGAGTGTACTAGAGGCTTGTGATAGAGTCAACATGAGGACATC
 TAGCTCAATACAAAATGAAGATGAAGCCACCAGTATGGAGCTGATTGCCCTGGGCC

ACGCGTACGCGGCCGCTCGAG - GFP Tag - GTTTAA

Protein Sequence:

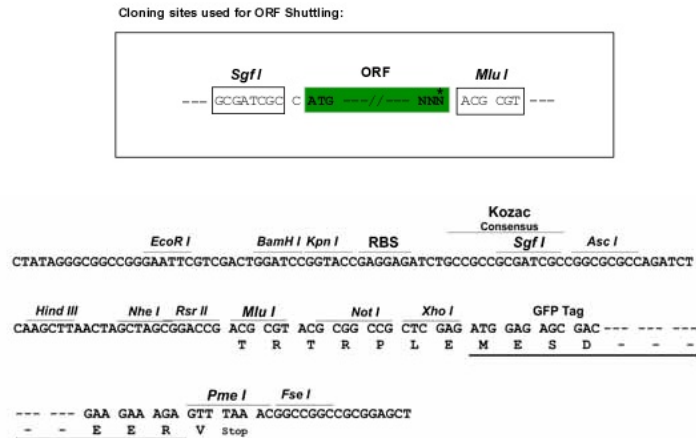
>RG221812 representing NM_006514
 Red=Cloning site Green=Tags(s)

MEFPISLETNNFRFTPESELVEIEKQIAAKQGTKKAREKHREQKDQEEKPRPQLDLKACNQLPKFYGEL
 PAELIGEPLEDLDPFYSTRFTMVLNKGRTISRFSATRALWLFSPFNLIRRTAIKVSVHSWFLFITVTI
 LVNCVCMTRTDLPEKIEYVFTVIYTFEALIKILARGFCLNEFTYLRDPWNWLDVSVITLAYVGTAI DLRG
 ISGLRTRFRVLRALKTVSIVPGLKVIIVGALIHVSVKKLADVTILTIFCLSVFALVGLQLFKGNLKNKCVKND
 MAVNETNYSSHKRPDIYINKRGTSDPLL CGNGSDSGHCPDGYICLKTSNDPDFNYTSFDSFAWAFSLF
 RLMTQDSWERLYQQLRSTSGKIYMIFFVLVIFLGSFYLVNLILAVVTMAYEEQNQATTDEIEAKEKFKQE
 ALEMLRKEQEVLAALGIDTSLHSHNGSPLTSKNASERRHRKPRVSEGSTEDNKSPRSDPYNQRRMSFL
 GLASGKRRASHGVSFHFRRSPGRDISLPEGVTDGVPFGDHESHRSGLLLGGGAGQQGPLPRSPQPQSNP
 DSRHGEDEHQPPPTSELAPGAVDVSAFDAGQKKTFLSAEYLDEPFRAQRAMS SVSIIITSVLEEESEEQK
 CPPCLTSLSQKYL IWDCCPMWVKLKTILFGLVTDPAELTITLCIVVNTIFMAMEHHGMSPTFEAMLQIG
 NIVFTIFFTAEMVFKIIAFDPYFYFQKKWNIFDCIIVTVSLELGVAKKGSLSVLRSFRLLRVFKLAKSW
 PTLNLIKIIIGNSV GALGNLTII LAIIIVFVFALVGKQLGENYRNRKNI SAPHEDWPRWHMHDFHSFL
 IVFRILCGEWIENMWACMEVGQKSIICLILFLVMVLGNL VVNLFIALLNSFSADNLTAPEDDGEVNNL
 QVALARIQVFGHRTKQALCSFFSRSCPFPQKAEPELVVKLPLSSKAENHIAANTARGSSGGLQAPRGP
 RDEHSDFIANPTVWVSVPIAEGESDLDLEDDGGEDAQSFQQEVIPKGQQEQQLQOVERCGDHLTPRSPGT
 GTSSDLAPSLGETWKDESVPQVPAEGVDDTSSEGSTVDCLDPEEILRKIPELADDLEEPDDCFTEGCI
 RHCPCCKLDTTKSPWDVGWQVRKTCYRIVEHSWFESFIIIFMILLSSGSLAFEDYLDQKPTVKALLEYTD
 RVFTFIFVFEMLLKVVAYGFKKYFTNAWCWLDLIVNISLISLTAKILEYSEVAPIKALRTLRLRPLRA
 LSRFEGMRVVVDALVGAIPSIMNVLLVCLIFWLIFSIMGVNLFAGKFWRCINYTDFGSLVPLSIVNNKS
 DCKIQNSTGSFFWVNVKVNFDNVAMGYLALLQVATFKGWMDIMYAAVDSREVNMQPKWEDNVYMYLYFVI
 FIIIFGGFFTLNLFVGVIIIDNFNQKKKLGQDIFMTEEQKKYYNAMKKGSKKPKPIPRPLNKFQGFVF
 DIVTRQAFDITIMVLIICLNMITMMVETDDQSEEKTKILGKINQFFVAVFTGECVMKMFALRQYYFTNGWN
 VFDFIVVLSIASLIFSAIILKSLQSYFSPTLFRVIRLARIGRILRLIRAAGKIRTLLFALMMSLPALFNI
 GLLLFLVMIYSIFGMSSFPVHRWEAGIDDMFNQTFANSMLCLFQITTSAGWDGLLSPIINTGPPYCDP
 NLPNSNGTRGDCGSPAVGIIFFTTYIIISFLIVVNMVIAVILENFVATEESTEPLSEDDFDMFYETWEK
 FDPEATQFITFSALSDFADTL SGPLRIPKPNRNLIQMDLPLVPGDKIHCLDILFAFTKNVLGESGELDS
 LKANMEEKFMATNL SKSSYEPIATTLRWKQEDISATVIQKAYRSYVLRHSMALSNTPCVPRAEAAAASLP
 DEGFAFTANENCVLPDKSETASATSFPPSYESVTRGLSDRVNMRTSSSIQNEDEATSMELIAPGP

TRTRPLE - GFP Tag - V

Restriction Sites:

Sgfl-MluI

Cloning Scheme:


ACCN: NM_006514

ORF Size: 5868 bp

OTI Disclaimer: The molecular sequence of this clone aligns with the gene accession number as a point of reference only. However, individual transcript sequences of the same gene can differ through naturally occurring variations (e.g. polymorphisms), each with its own valid existence. This clone is substantially in agreement with the reference, but a complete review of all prevailing variants is recommended prior to use. [More info](#)

OTI Annotation: This clone was engineered to express the complete ORF with an expression tag. Expression varies depending on the nature of the gene.

Components: The ORF clone is ion-exchange column purified and shipped in a 2D barcoded Matrix tube containing 10ug of transfection-ready, dried plasmid DNA (reconstitute with 100 ul of water).

Reconstitution Method:

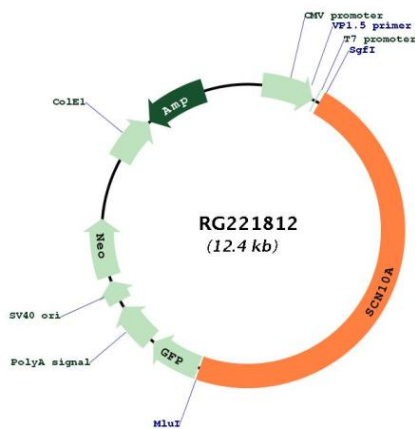
1. Centrifuge at 5,000xg for 5min.
2. Carefully open the tube and add 100ul of sterile water to dissolve the DNA.
3. Close the tube and incubate for 10 minutes at room temperature.
4. Briefly vortex the tube and then do a quick spin (less than 5000xg) to concentrate the liquid at the bottom.
5. Store the suspended plasmid at -20°C. The DNA is stable for at least one year from date of shipping when stored at -20°C.

RefSeq: [NM_006514.2](#), [NP_006505.2](#)

RefSeq Size: 5874 bp

RefSeq ORF: 5871 bp
Locus ID: 6336
UniProt ID: [Q9Y5Y9](#)
Cytogenetics: 3p22.2
Protein Families: Druggable Genome, Ion Channels: Sodium, Transmembrane
Gene Summary: The protein encoded by this gene is a tetrodotoxin-resistant voltage-gated sodium channel alpha subunit. The properties of the channel formed by the encoded transmembrane protein can be altered by interaction with different beta subunits. This protein may be involved in the onset of pain associated with peripheral neuropathy. Alternative splicing results in multiple transcript variants. [provided by RefSeq, Jun 2014]

Product images:



Circular map for RG221812