

## Product datasheet for **RG221728**

### S100P binding protein (S100BP) (NM\_001017406) Human Tagged ORF Clone

#### Product data:

Product Type:	Expression Plasmids
Product Name:	S100P binding protein (S100BP) (NM_001017406) Human Tagged ORF Clone
Tag:	TurboGFP
Symbol:	S100BPB
Synonyms:	DKFZp313K2325; FLJ12903; S100PBPR
Mammalian Cell Selection:	Neomycin
Vector:	pCMV6-AC-GFP (PS100010)
E. coli Selection:	Ampicillin (100 ug/mL)
ORF Nucleotide Sequence:	>RG221728 representing NM_001017406 Red=Cloning site Blue=ORF Green=Tags(s)

TTTTGTAATACGACTCACTATAGGGCGGCCGGAATTCGTCGACTGGATCCGGTACCGAGGAGATCTGCC  
GCC**CGATCGCC**

ATGATGTGCTCACGGGTGCCCTCTGAACAGTCTTCTGGTACCTCTCTTGCCTAAAGACGGTGCCCCAT  
TTTCTGGGATTCCTGGATGAGGATGGATTGGATGACTCCTTGCTGGAGCTGTCAGAGGGAGAAGAAGA  
TGATGGTGATGTAATTACACAGAGGAAGAGATTGATGCACTGTTGAAGGAAGATGACCCATCATATGAG  
CAGTCTTCTGGGAAGATGATGGTGGGCATGTTGAGAAGGGAGAAAGAGGGAGTCAAATCTACTTGATA  
CTCCCCGAGAGAAAAATTCATCGTACAGCCTGGGACCAGTAGCTGAGACTCCTGACCTCTCAAACCTACC  
TCAGCTAAGTACATCAAGTGGTCATGGACCAGCTCATACTAAACCATTAACAGACGCTCTGTACTAGAA  
AAGAATCTTATAAAAGTAACTGTTGCACCATTTAATCCAACAGTTTGTGATGCTCTGCTTGATAAGGACG  
AGACTGATTCGTCCAAGATACTGAAAACTCTTCCCTTGGAGAAGAGATGAGAGAAGATGGTCTTAG  
CCCAATGAAAGCAAACCTTGTACTGAATCTGAAGGATCAGCCCAATAACTCTGCCTGGAATGGGCC  
CAGCTCTTCTTCAAACAATACTTTCAACAGACTGTCTCTGATAAAAAATGCCTGACAGTGAGAACC  
CTACGTCTGATTCTCTCGGATCTCAGACCATTAGAGACTCCTAATATGGAGTTATCCTGCAGAAATGG  
TGGTTCACACAAGTCAAGTTGTGAAATGAGATCTCTGGTTGTTCCACCTCATCAACAAGATGTTCTT  
AACAAAGGATTCTGGGAAGATGAAAGGCCATGAGAGAAGACTAGGCAAAGTCATTCTGTTCTACAACTA  
AGACCAGGACTAATGTTCCGACGTTTTACAGTCAAATCTAGAACAGCAGAAGCAGCTTTATCTCAGGAG  
TGTCATTGCTCATATAGAAGACCCAGAGGACACTAACCAAGGA

**ACGCGT**ACGCGGCCGCTCGAG - GFP Tag - GTTTAA



[View online »](#)

**Protein Sequence:** >RG221728 representing NM\_001017406  
 Red=Cloning site Green=Tags(s)

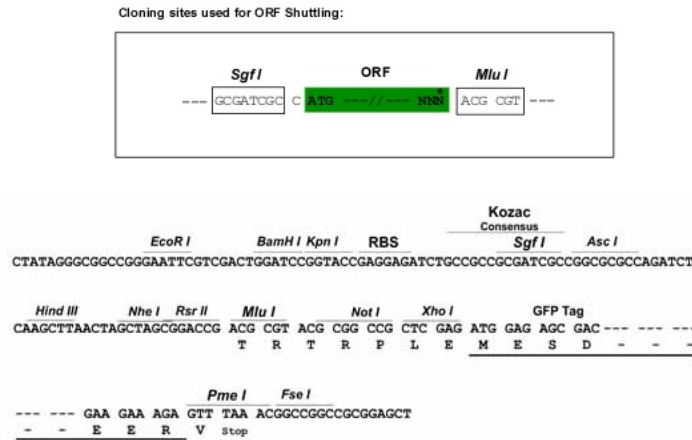
MMCSRVPSEQSSGTSLLPKDGAPFSWDSLDEDGLDDSLLELSEGEEDDGDVNYTEEEIDALLKEDDPSYE  
 QSSGEDDGGHVEKGERGSQILLDTPREKNSSYSLGPVAETPDLFKLPQLSTSSGHGPAHTKPLNRRSVLE  
 KNLIKVTVPFNPTVCDALLDKDETSSKDETEKLSLGEEMREDGLSPNESKLCETSEGISPNNSAWNGP  
 QLSSSNNFQQTVSDKNMPDSENPTSVFSRISDHSETPNMELSCRNGGSHKSSCEMRSLVVSTSSNKDVL  
 NKDSGKMKGHERRLGKVIPVLQTKTRTNVPTFSQSNLEQQKQLYLRSVIAHIEDPEDTNQG

TRTRPLE - GFP Tag - V

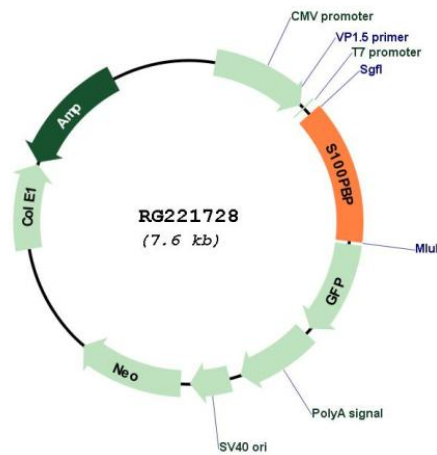
**Restriction Sites:**

Sgfl-MluI

**Cloning Scheme:**



**Plasmid Map:**



**ACCN:** NM\_001017406

**ORF Size:** 1023 bp

<b>OTI Disclaimer:</b>	The molecular sequence of this clone aligns with the gene accession number as a point of reference only. However, individual transcript sequences of the same gene can differ through naturally occurring variations (e.g. polymorphisms), each with its own valid existence. This clone is substantially in agreement with the reference, but a complete review of all prevailing variants is recommended prior to use. <a href="#">More info</a>
<b>OTI Annotation:</b>	This clone was engineered to express the complete ORF with an expression tag. Expression varies depending on the nature of the gene.
<b>Components:</b>	The ORF clone is ion-exchange column purified and shipped in a 2D barcoded Matrix tube containing 10ug of transfection-ready, dried plasmid DNA (reconstitute with 100 ul of water).
<b>Reconstitution Method:</b>	<ol style="list-style-type: none"><li>1. Centrifuge at 5,000xg for 5min.</li><li>2. Carefully open the tube and add 100ul of sterile water to dissolve the DNA.</li><li>3. Close the tube and incubate for 10 minutes at room temperature.</li><li>4. Briefly vortex the tube and then do a quick spin (less than 5000xg) to concentrate the liquid at the bottom.</li><li>5. Store the suspended plasmid at -20°C. The DNA is stable for at least one year from date of shipping when stored at -20°C.</li></ol>
<b>RefSeq:</b>	<a href="#">NM_001017406.1</a> , <a href="#">NP_001017406.1</a>
<b>RefSeq Size:</b>	1483 bp
<b>RefSeq ORF:</b>	1025 bp
<b>Locus ID:</b>	64766
<b>Cytogenetics:</b>	1p35.1
<b>Gene Summary:</b>	This gene encodes a protein that was originally identified by its interaction with S100 calcium-binding protein P. Expression of this protein has been reported to be associated with pancreatic ductal adenocarcinoma. Alternatively spliced transcript variants have been described. [provided by RefSeq, Jan 2012]