

## Product datasheet for **RG221699**

### CD105 (ENG) (NM\_000118) Human Tagged ORF Clone

#### Product data:

Product Type:	Expression Plasmids
Product Name:	CD105 (ENG) (NM_000118) Human Tagged ORF Clone
Tag:	TurboGFP
Symbol:	CD105
Synonyms:	END; HHT1; ORW1
Mammalian Cell Selection:	Neomycin
Vector:	pCMV6-AC-GFP (PS100010)
E. coli Selection:	Ampicillin (100 ug/mL)



[View online »](#)

**ORF Nucleotide Sequence:**

>RG221699 representing NM\_000118  
 Red=Cloning site Blue=ORF Green=Tags(s)

TTTTGTAATACGACTCACTATAGGGCGGCCGGAATTCGTCGACTGGATCCGGTACCGAGGAGATCTGCC  
 GCC**CGGATCGCC**

ATGGACCGCGGCACGCTCCCTCTGGCTGTTGCCCTGCTGTGCCAGCTGCAGCCTCAGCCCCACAAGTC  
 TTGCAGAAACAGTCCATTGTGACCTTACGCTGTGGGCCCGAGAGGGGGAGGTGACATATACCACTAG  
 CCAGGTCTCGAAGGGCTGCGTGGCTCAGGCCCAATGCCATCCTTGAAGTCCATGTCCTTCTTCTGGAG  
 TTCCCAACGGGCCGTCACAGCTGGAGCTGACTCTCCAGGCATCCAAGCAAAATGGCACCTGGCCCCGAG  
 AGGTGCTTCTGGTCTCAGTGTAAACAGCAGTGTCTTCTGCATCTCCAGGCCCTGGGAATCCCACTGCA  
 CTTGGCCTACAATTCCAGCCTGGTCACCTTCCAAGAGCCCCGGGGTCAACACCACAGAGCTGCCATCC  
 TTCCCAAGACCCAGATCCTTGTAGTGGCAGCTGAGAGGGGCCCATCACCTCTGCTGTGAGCTGAATG  
 ACCCCAGAGCATCCTCCTCGACTGGCCAAGCCAGGGGTACTGTCTTCTGCATGCTGGAAGCCAG  
 CCAGGACATGGGCCGACGCTCGAGTGGCGCCGCTACTCCAGCCTTGGTCCGGGGCTGCCACTTGGAA  
 GGCGTGGCCGGCCACAAGGAGGCCACATCCTGAGGGTCTGCCGGGCCACTCGGCCGGGCCCGGACGG  
 TGACGGTGAAGGTGGAAGTGAAGTGCAGCTGCGCACCCGGGGATCTCGATGCCGTCTCATCTGCAGGGTCCCC  
 CTACGTGTCTGGCTCATCGACGCCAACCAACATGCAGATCTGGACCACTGGAGAATACTCCTTCAAG  
 ATCTTTCCAGAGAAAAACATTCTGTGGCTTCAAGCTCCCAGACACACCTCAAGGCCCTCGGGGAGGCC  
 GGATGCTCAATGCCAGCATTGTGGCATCCTTCTGTGGAGTACCGCTGGCCAGCATTGTCTCACTTTCATGC  
 CTCCAGCTGCGGTGGTAGGCTGCAGACCTACCCGACCGATCCAGACCACTCCTCCAAGGACACTTGT  
 AGCCCGGAGCTGCTCATGTCTTGTATCCAGACAAAAGTGTGCCGACGACCCATGACCCTGGTACTAAAGA  
 AAGAGCTTGTGGCATTGAAGTGCACCATCACGGCCCTGACCTTCTGGGACCCAGCTGTGAGGCAGA  
 GGACAGGGGTGACAAGTTTGTCTTGGCAGTGTACTCCAGCTGTGGCATGCAGGTGTCAGCAAGTATG  
 ATCAGCAATGAGCGGTGGTCAATATCCTGTGAGCTCATCACACAGCGGAAAAAGGTGCACTGCCTCA  
 ACATGGACAGCCTCTCTTCCAGCTGGGCTCTACCTCAGCCACACTTCTCCAGGCCTCCAACACCAT  
 CGAGCCGGGGCAGCAGAGCTTTGTGAGGTGAGAGTGTCCCCATCCGTCTCCGAGTTCCTGCTCCAGTTA  
 GACAGCTGCCACCTGGACTTGGGCTGAGGGAGGCACCGTGAAGTCACTCCAGGGCCGGGCGGCCAAGG  
 GCAACTGTGTGAGCCTGCTGTCCCAAGCCCCAGGGTGAACCGCTTACGCTTCTCCTCCACTTCTA  
 CACAGTACCCATACCAAAACCCGACCCCTCAGCTGCACGGTAGCCCTGCGTCCCAAGACCGGGTCTCAA  
 GACCAGGAAGTCCATAGGACTGTCTTCATGCGCTTGAACATCATAGCCCTGACCTGTCTGTTGCACAA  
 GCAAAGGCTCGTCTGCCCGCGTGTGGGCATCACCTTGGTGCCTTCTCATCGGGCCCTGCTCAC  
 TGCTGCACTCTGGTACATCTACTCGCACACGCGTGAAGTACCCAGGCCCCACAG

AG**CGGACCG**ACGCGTACGCGGCCGCTCGAG - GFP Tag - GTTTAA

**Protein Sequence:**

>RG221699 representing NM\_000118  
 Red=Cloning site Green=Tags(s)

MDRGTLPALAVALLASCSLSPSTLAETVHCDLQPVGPERGEVYTTTSQVSKGCVAQAPNAILEVHVLFLFLE  
 FPTGPSQLELTLQASKQNGTWPREVLLVLSVNSSVFLHLQALGIPLHLAYNSSLVTFQPEPPGVNTELPS  
 FPKTQILEWAAERGPITSAEELNDPQSILLRLGQAQGSLSFCMLEASQDMGRTLEWRPRTPALVRGCHLE  
 GVAGHKEAHILRVLPGHSAGPRTVTVKVELSCAPGDLDAVLILQPPYVSWLIDANHNMQIWTTEYSFK  
 IFPEKNIRGFKLPDTPQGLLGEARMLNASIVASFVELPLASIVSLHASSCGGRLQTSAPAIQTTPPKDTC  
 SPELLMSLIQTKCADDAMTLVLKELVAHLKCTITGLTFWDPSCAEADRGDKFVLRSAYSYSSCGMQVSASM  
 ISNEAVVNILSSSPQRKKVHCLNMDLSLQGLYLSPHFLQASNTIEPQQSFVQVRVSPVSEFLLQL  
 DSCHLDLGPPEGTVELIQGRAAKGNCVSLSPSPGDPFRSFLHFYTVPIPKTGTLSCTVALRPKTSQ  
 DQEVHRTVFMRLNIISPDLSGCTSKGLVLPVAVLGITFGAFLIGALLTAALWYIYSHTREYPRPPQ

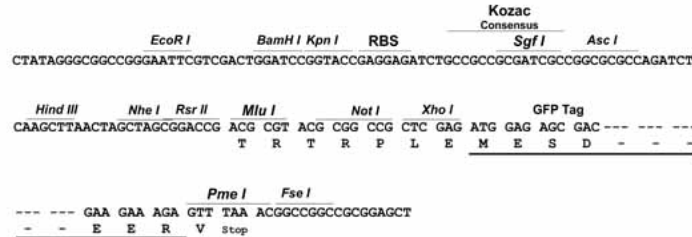
SGP**TRRRLE** - GFP Tag - V

**Restriction Sites:**

Sgfl-RsrII

**Cloning Scheme:**

Cloning sites used for ORF Shuttling:


**ACCN:** NM\_000118

**ORF Size:** 1875 bp

**OTI Disclaimer:** The molecular sequence of this clone aligns with the gene accession number as a point of reference only. However, individual transcript sequences of the same gene can differ through naturally occurring variations (e.g. polymorphisms), each with its own valid existence. This clone is substantially in agreement with the reference, but a complete review of all prevailing variants is recommended prior to use. [More info](#)

**OTI Annotation:** This clone was engineered to express the complete ORF with an expression tag. Expression varies depending on the nature of the gene.

**Components:** The ORF clone is ion-exchange column purified and shipped in a 2D barcoded Matrix tube containing 10ug of transfection-ready, dried plasmid DNA (reconstitute with 100 ul of water).

**Reconstitution Method:**

1. Centrifuge at 5,000xg for 5min.
2. Carefully open the tube and add 100ul of sterile water to dissolve the DNA.
3. Close the tube and incubate for 10 minutes at room temperature.
4. Briefly vortex the tube and then do a quick spin (less than 5000xg) to concentrate the liquid at the bottom.
5. Store the suspended plasmid at -20°C. The DNA is stable for at least one year from date of shipping when stored at -20°C.

**RefSeq:** [NM\\_000118.3](#)
**RefSeq Size:** 3142 bp

**RefSeq ORF:** 1878 bp

**Locus ID:** 2022

**UniProt ID:** [P17813](#)

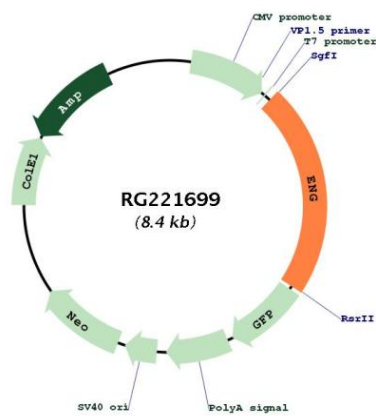
**Cytogenetics:** 9q34.11

**Domains:** zona\_pellucida

**Protein Families:** Druggable Genome, ES Cell Differentiation/IPS, Transmembrane

**Gene Summary:** This gene encodes a homodimeric transmembrane protein which is a major glycoprotein of the vascular endothelium. This protein is a component of the transforming growth factor beta receptor complex and it binds to the beta1 and beta3 peptides with high affinity. Mutations in this gene cause hereditary hemorrhagic telangiectasia, also known as Osler-Rendu-Weber syndrome 1, an autosomal dominant multisystemic vascular dysplasia. This gene may also be involved in preeclampsia and several types of cancer. Alternatively spliced transcript variants encoding different isoforms have been found for this gene. [provided by RefSeq, May 2013]

**Product images:**



Circular map for RG221699