

Product datasheet for **RG221698**

CBWD3 (NM_201453) Human Tagged ORF Clone

Product data:

Product Type:	Expression Plasmids
Product Name:	CBWD3 (NM_201453) Human Tagged ORF Clone
Tag:	TurboGFP
Symbol:	CBWD3
Synonyms:	bA561O23.1
Mammalian Cell Selection:	Neomycin
Vector:	pCMV6-AC-GFP (PS100010)
E. coli Selection:	Ampicillin (100 ug/mL)
ORF Nucleotide Sequence:	>RG221698 representing NM_201453 Red=Cloning site Blue=ORF Green=Tags(s)

TTTTGTAATACGACTCACTATAGGGCGGCCGGAATTCGTCGACTGGATCCGGTACCGAGGAGATCTGCC
GCC**CGATCGCC**

ATGTTACCGGCTGTTGGATCTGCGGATGAGGAGGAGGATCCTGCGGAGGAGGATTGCTCTGAATTGGTTC
CCATGGAGACGACGCAAAGCGAGGAGGAGGAAAAGTCTGGCCTCGGCGCCAAGATCCCAGTCACAATTAT
CACCGGATTTAGGTGCTGGGAAGACAACACTTCTGAACTATATTTGACAGAGCAACATAGTAAAAGA
GTAGCGGTCATTTAAATGAATTTGGGAAGGAAGTGCCTGGAGAAATCCTTAGCTGTCAGCCAAGGTG
GAGAGCTCTATGAAGAGTGGCTGGAACCTAGAAACGGTTGCCTCTGCTGTTCAAGGACAATGGCCT
TAGAGCTATTGAGAAATTTGATGCAAAAGAAGGGGAAATTTGATTACATACTGTTAGAGACCACTGGATTG
GCAGACCCAGGTGCAGTGGCTTCTATGTTTTGGTTGATGCTGAATTAGGAGTGATATTTACCTTGATG
GTATCATAACTATAGTGGATTCAAATATGGATTAACATTTAGCAGAAGAGAAACCTGATGGCCTTAT
CAATGAAGCTACTAGGCAAGTTGCTTTGGCAGATGCCATTCTCATAATAAAACAGACTTGGTCCAGAA
GAAGATGTAAAGAACTAAGAGCGACAATTAGATCCATAAATGGACTAGGACAAATCTTAGAAACACAAA
GATCAAGAGTTGATCTCTCTAATATATTAGATCTTCATGCCTTTGATAGTCTCTCTGGAATAAGTTTGCA
GAAAAAATTCAGCATGTGCCAGGAACAACCTCACCTTGATCAGAGTATTGTTACAATCACATTTGAA
GTACCAGGAAATGCAAAGGAAGAATCTTAATATGTTTATTGAGAAATCCTGTGGGAAAAGAATGTGA
GAAACAAGGACAATCACTGCATGGAGGTGATAAGGCTGAAGGGATTGGTGTCAATCAAAGACAAATCACA
ACAAGTATTGTCCAGGTTGTCATGAGCTCTATGATCTGGAGGAGACTCCAGTGAAGGATGAC
ACTGAGAGAAACAATCGATTGGTCTCCTTGGCAGAAATTTAGATAAGGATATCCTTAAACAGCTGTTTA
TAGCTACTGTGACAGAAACAGAAAAGCAGTGGACAACACATTTCAAAGAAGATCAAGTTGTACA

ACCGTACGCGGCCGCTCGAG - GFP Tag - GTTTAA



[View online »](#)

Protein Sequence: >RG221698 representing NM_201453
Red=Cloning site Green=Tags(s)

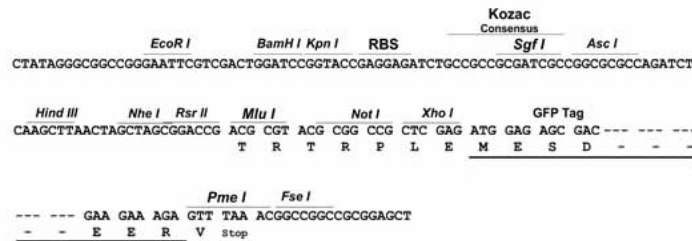
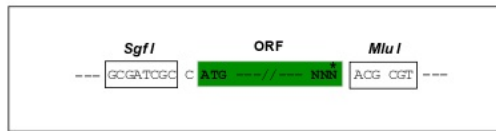
```
MLPAVGSADDEEDPAEEDCPPELVPMETTQSEEEEEKSGLGAKIPVTIITGYLGAGKTTLLNYILTEQHSKR
VAVILNEFGEGSALEKSLAVSQGGELYEWELELRNGCLCCSVKDNGLRAIENLMQKKGFYILLETTGL
ADPGAVASMFVWDAELGSDIYLDGIITIVDSKYGLKHLAEKPDGLINEATRQVALADAILINKTDLVPE
EDVKKLRATIRSINGLQILETQRSVDLSNILDHLAFDSLSGISLQKKLQHVPGTQPHLDQSIVITIFE
VPGNAKEEHLNMF IQNLLWEKNVRNKDNHCMEVIRLKGLVSIKDKSQQVI VQGVHELVDLEETPVSWKDD
TERTNRLVLLGRNLDKDILKQLFIATVTETEKQWTTTHFKEDQVCT
```

TRTRPLE - GFP Tag - V

Restriction Sites: SgfI-MluI

Cloning Scheme:

Cloning sites used for ORF Shuttling:



ACCN: NM_201453

ORF Size: 1185 bp

OTI Disclaimer: The molecular sequence of this clone aligns with the gene accession number as a point of reference only. However, individual transcript sequences of the same gene can differ through naturally occurring variations (e.g. polymorphisms), each with its own valid existence. This clone is substantially in agreement with the reference, but a complete review of all prevailing variants is recommended prior to use. [More info](#)

OTI Annotation: This clone was engineered to express the complete ORF with an expression tag. Expression varies depending on the nature of the gene.

Components: The ORF clone is ion-exchange column purified and shipped in a 2D barcoded Matrix tube containing 10ug of transfection-ready, dried plasmid DNA (reconstitute with 100 ul of water).

Reconstitution Method:

1. Centrifuge at 5,000xg for 5min.
2. Carefully open the tube and add 100ul of sterile water to dissolve the DNA.
3. Close the tube and incubate for 10 minutes at room temperature.
4. Briefly vortex the tube and then do a quick spin (less than 5000xg) to concentrate the liquid at the bottom.
5. Store the suspended plasmid at -20°C. The DNA is stable for at least one year from date of shipping when stored at -20°C.

Note: Plasmids are not sterile. For experiments where strict sterility is required, filtration with 0.22um filter is required.

RefSeq: [NM_201453.1](#), [NP_958861.1](#)

RefSeq Size: 1677 bp

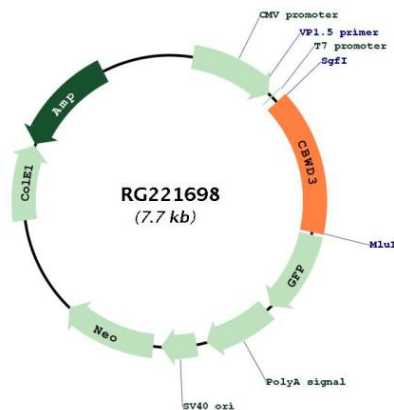
RefSeq ORF: 1188 bp

Locus ID: 445571

UniProt ID: [Q5JTY5](#)

Cytogenetics: 9q21.11

Product images:



Circular map for RG221698