

## Product datasheet for **RG221686**

### **TOR1AIP1 (NM\_015602) Human Tagged ORF Clone**

#### **Product data:**

Product Type:	Expression Plasmids
Product Name:	TOR1AIP1 (NM_015602) Human Tagged ORF Clone
Tag:	TurboGFP
Symbol:	TOR1AIP1
Synonyms:	LAP1; LAP1B; LAP1C; LGMD2Y
Mammalian Cell Selection:	Neomycin
Vector:	pCMV6-AC-GFP (PS100010)
E. coli Selection:	Ampicillin (100 ug/mL)



[View online »](#)

**ORF Nucleotide Sequence:**

>RG221686 representing NM\_015602  
 Red=Cloning site Blue=ORF Green=Tags(s)

TTTTGTAATACGACTCACTATAGGGCGGCCGGGAATTCGTCGACTGGATCCGGTACCGAGGAGATCTGCC  
 GCC**CGCATCGCC**

ATGGCGGGCGACGGCGGGCAGAGGCGGTGCGGGAAGGATGGGGTGTGTACGTCACCCCGAGGCC  
 CCATCCGAGAGGGAAGGGCGCGCTCGCCCTCAAAATGGCGGCAGCAGCGATGCCCTGCGTACAGAAC  
 TCCTCCGTCGCGCCAGGGCCGGCGGAAGTGAGGTTCTCGGACGAGCCGCCAGAAGTGTACGGCGACTTC  
 GAGCCCTGTTGGCCAAAGAAAGGTCCCGGTGGGAAAACGAACCCGGCTAGAAGAGTTCGGTCCGATT  
 CTGCGAAAGAGGAAGTGAGAGAAAGCGCTACTACCTTCGGTCTAGGCAGCGGAGGCAGCCGCGACCCCA  
 GGAAACCGAGGAAATGAAGACGCGAAGGACTACCCGCCTCAGCAGCAGCACTCAGAGCAGCCTCCGCTA  
 CAGCCGCTCCTGTTATGACCAGGAGAGGGCTGCGGGACTCTATTCTCTGAAGAGGATGAAGCATCTT  
 CCCAACTGATTTAAGCCAAACGATCTCAAAGAAAAGTGTGAGGAGCATAACAAGAGGCTCCAGTGAGTGA  
 AGATCTTGAATCAGGTTACGTCGACCCCTCTAAGATACCAAGATATGAAGCCACCAGTGTCCAACAG  
 AAGGTCAATTTCTCTGAAGAAGGAGAACTGAAGAAGATGATCAAGACAGCTCTCACAGCAGTGTCACTA  
 CTGTTAAGGCCAGATCCAGGGATTCTGATGAATCTGGAGATAAAACCACCAGATCATCTAGTCAATATAT  
 AGAATCATTTTGGCAGTCATCACAAAGTCAAACCTTACAGCTCATGATAAGCAACCTTCAGTGCTAAGC  
 TCAGGATATCAAAAACTCCCGAGGATGGGCCCCACAACTGCAAGAATAAGGACCAGGATGCAAAATG  
 ACAGCATTCTGAAATCAGAGCTTGGAAACAGTCACCATCAACCTCCAGCCGACAAGTACTGGACAACC  
 CCAAAATGCATCTTTTGTCAAGAGGAACCGGTGGTGGCTACTTCTCTGATAGCTGCTCTTGCCCTGGG  
 AGTTTTTGGTTCTTTAGTACTCCTGAGGTAGAAACCACTGCTGTTCAAGAGTTCAGAACCAGATGAATC  
 AACTTAAGAATAAGTACCAAGTCAAGATGAGAAGCTGTGAAAAGGAGCCAAACATTCCTGAAAAACA  
 TCTTAATAGCTCCCATCCTCGGTCTCAGCCTGCTATCTTACTGCTCACTGCTGCCGAGATGCTGAAGAA  
 GCATTTAGGTGTCTGAGTGAACAATTGCTGATGCCTATTCTTTCTTTTCTGAGTGTCCGTGCCATCCGGA  
 TTGATGGGACAGATAAAGCTACTCAAGACAGTGATACTGTCAAACCTAGAGGTAGACCAAGAAGTGAAGCA  
 TGGATTTAAGAATGGCCAGAATGCAGCTGTGGTACACCGCTTTGAGTCATTTCCCGCAGGCTCTACTTTG  
 ATCTTCTACAAATATTGTGACCATGAAAACCGGCCTTCAAAGATGTAGCCTTAGTCTGACTGTCTTAT  
 TGGAGGAAGAGACTTGAACAAGTCTAGGCCTAAAGGAAGTTGAAGAAAAAGTAAAGAGATTTTCTTAA  
 AGTCAAGTTCACCAATTCTAACACACCAACTCCTACAATCATATGGACCCAGACAACTGAATGGCCTC  
 TGGAGCCGATTTCTCACTTAGTCTGCCTGTGCAACCTGAAAATGCCCTGAAAAGGGGCATCTGCTTA

**ACGCGT**ACGCGGCCGCTCGAG - GFP Tag - GTTTAA

**Protein Sequence:**

>RG221686 representing NM\_015602  
 Red=Cloning site Green=Tags(s)

MAGDGRRAEAVREGWGVYVTPRAPIREGRGLAPQNGSSDAPAYRTPPSRQGRREVRFSDPEPEVYVYDF  
 EPLVAKERSPVGKRTRLEEFSDSAKEEVRESAYYLRSRQRRQPRPQETEEMKTRRTRRLQQQHSEQPPL  
 QPSPVMTRRGLRDSHSSSEDEASSQTDLSQTISKKTVRSIQEAPVSEDLVIRLRRPPLRYPRYEATSVQQ  
 KVNFSSEGETEEDDQSSHSVTTVKARSRDSDESGDKTRSSSQYIESFWQSSSQNFTAHDKQPSVLS  
 SGYQKTPQEWAPQTARIRTRMQNDSILKSELGNQSPSTSSRQVTGQPQNASFVKRNRWLLPLIAALASG  
 SFWFFSTPEVETTAVQEFQNMNQLKNKYQGQDEKLWKRSTFLEKHLNSSHPRSQPAIIILLTAARDAEE  
 ALRCLSEQIADAYSSFRSVRAIRIDGDKATQDSDTVKLEVDQELSNFGKNGQNAVVHFRFESFPAGSTL  
 IFYKYCDHENAFAKDVALLVTLVLEEETLGTSLGLKEVEEKVRDFLKVKFTNSNTPNSYNHMDPKLNGL  
 WSRISHLVLPVQPENALKRGICL

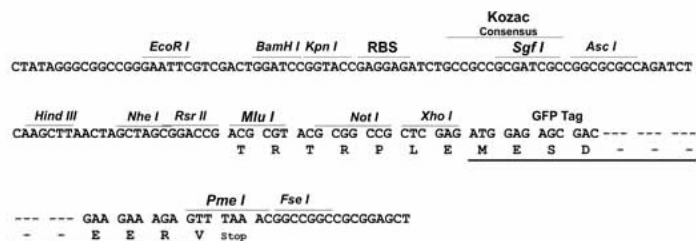
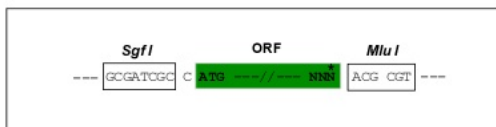
**TRTRPLE** - GFP Tag - V

**Restriction Sites:**

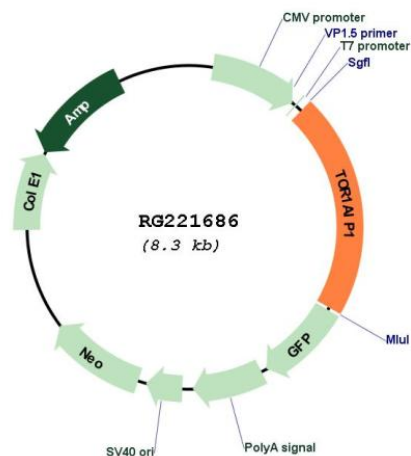
Sgfl-MluI

Cloning Scheme:

Cloning sites used for ORF Shutting:



Plasmid Map:



ACCN: NM\_015602

ORF Size: 1749 bp

<b>OTI Disclaimer:</b>	The molecular sequence of this clone aligns with the gene accession number as a point of reference only. However, individual transcript sequences of the same gene can differ through naturally occurring variations (e.g. polymorphisms), each with its own valid existence. This clone is substantially in agreement with the reference, but a complete review of all prevailing variants is recommended prior to use. <a href="#">More info</a>
<b>OTI Annotation:</b>	This clone was engineered to express the complete ORF with an expression tag. Expression varies depending on the nature of the gene.
<b>Components:</b>	The ORF clone is ion-exchange column purified and shipped in a 2D barcoded Matrix tube containing 10ug of transfection-ready, dried plasmid DNA (reconstitute with 100 ul of water).
<b>Reconstitution Method:</b>	<ol style="list-style-type: none"><li>1. Centrifuge at 5,000xg for 5min.</li><li>2. Carefully open the tube and add 100ul of sterile water to dissolve the DNA.</li><li>3. Close the tube and incubate for 10 minutes at room temperature.</li><li>4. Briefly vortex the tube and then do a quick spin (less than 5000xg) to concentrate the liquid at the bottom.</li><li>5. Store the suspended plasmid at -20°C. The DNA is stable for at least one year from date of shipping when stored at -20°C.</li></ol>
<b>RefSeq:</b>	<a href="#">NM_015602.4</a>
<b>RefSeq Size:</b>	3824 bp
<b>RefSeq ORF:</b>	1752 bp
<b>Locus ID:</b>	26092
<b>UniProt ID:</b>	<a href="#">Q5JTV8</a>
<b>Cytogenetics:</b>	1q25.2
<b>Gene Summary:</b>	This gene encodes a type 2 integral membrane protein that binds A- and B-type lamins. The encoded protein localizes to the inner nuclear membrane and may be involved in maintaining the attachment of the nuclear membrane to the nuclear lamina during cell division. Alternate splicing results in multiple transcript variants. [provided by RefSeq, Apr 2016]