

Product datasheet for **RG221629**

FGF16 (NM_003868) Human Tagged ORF Clone

Product data:

Product Type: Expression Plasmids
Product Name: FGF16 (NM_003868) Human Tagged ORF Clone
Tag: TurboGFP
Symbol: FGF16
Synonyms: FGF-16; MF4
Mammalian Cell Selection: Neomycin
Vector: pCMV6-AC-GFP (PS100010)
E. coli Selection: Ampicillin (100 ug/mL)
ORF Nucleotide Sequence: >RG221629 representing NM_003868
 Red=Cloning site Blue=ORF Green=Tags(s)

TTTTGTAATACGACTCACTATAGGGCGGCCGGAATTCGTCGACTGGATCCGGTACCGAGGAGATCTGCC
GCC**CGATCGCC**

ATGGCAGAGGTGGGGGCGTCTTCGCCTCCTTGGACTGGGATCTACACGGCTTCTCCTCGTCTCTGGGGA
ACGTGCCCTTAGCTGACTCCCCAGGTTTCTGAACGAGCGCTGGGCCAAATCGAGGGGAAGCTGCAGCG
TGGCTACCCACAGACTTCGCCACCTGAAGGGGATCTGCGGCGCCGAGCTCTACTGCCGACCGGC
TTCCACCTGGAGATCTTCCCAACGGCACGGTGCACGGGACCCGCCACGACCACAGCCGCTTCGGAATCC
TGGAGTTTATCAGCCTGGCTGTGGGGCTGATCAGCATCCGGGGAGTGGACTCTGGCCTGTACCTAGGAAT
GAATGAGCGAGGAGAAGCTATGGGTCTGAAGAACTCACACGTGAATGTGTTTTCCGGGAACAGTTTGAA
GAAAAGTGGTACAACACCTATGCCTCAACCTTGTACAAACATTCGGACTCAGAGAGACAGTATTACGTGG
CCCTGAACAAAGATGGCTCACCCGGGAGGGATACAGGACTAAACGACACCAGAAATTCACTCACTTTTT
ACCCAGGCTGTAGATCCTTCTAAGTTGCCCTCCATGTCCAGAGACCTTTTCACTATAGG

ACGCGTACGCGGCCGCTCGAG - GFP Tag - GTTTAA

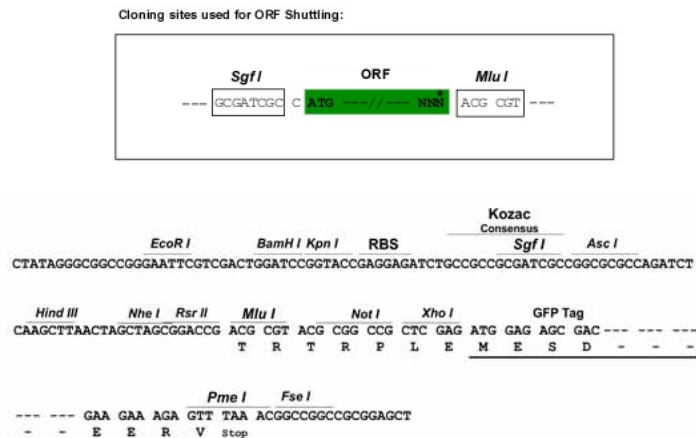
Protein Sequence: >RG221629 representing NM_003868
 Red=Cloning site Green=Tags(s)

MAEVGGVFASLDWDLHGFSSSLGNVPLADSPGFLNERLGQIEGKLQRGSPDF AHLKGILRRRQL YCRTG
FHLEIFPNGTVHGRHDSRFGILEFISLAVGLISIRGVDSGLYLG MNERGEL YGSKKL TRECVFREQFE
ENWYNTYASTLYKHSDSERQYYVALNKDGSREGYRTRKHQKFTHFLPRPVDPSKLPMSRDLFH YR

TRTRPLE - GFP Tag - V

Restriction Sites: SgfI-MluI



Cloning Scheme:


ACCN: NM_003868

ORF Size: 621 bp

OTI Disclaimer: The molecular sequence of this clone aligns with the gene accession number as a point of reference only. However, individual transcript sequences of the same gene can differ through naturally occurring variations (e.g. polymorphisms), each with its own valid existence. This clone is substantially in agreement with the reference, but a complete review of all prevailing variants is recommended prior to use. [More info](#)

OTI Annotation: This clone was engineered to express the complete ORF with an expression tag. Expression varies depending on the nature of the gene.

Components: The ORF clone is ion-exchange column purified and shipped in a 2D barcoded Matrix tube containing 10ug of transfection-ready, dried plasmid DNA (reconstitute with 100 ul of water).

Reconstitution Method:

1. Centrifuge at 5,000xg for 5min.
2. Carefully open the tube and add 100ul of sterile water to dissolve the DNA.
3. Close the tube and incubate for 10 minutes at room temperature.
4. Briefly vortex the tube and then do a quick spin (less than 5000xg) to concentrate the liquid at the bottom.
5. Store the suspended plasmid at -20°C. The DNA is stable for at least one year from date of shipping when stored at -20°C.

RefSeq: [NM_003868.1](#), [NP_003859.1](#)

RefSeq Size: 624 bp

RefSeq ORF: 624 bp

Locus ID: 8823

UniProt ID: [O43320](#)

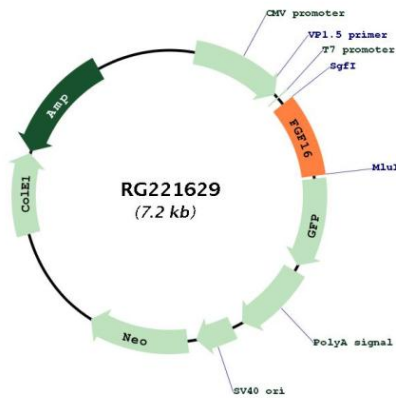
Cytogenetics: Xq21.1

Protein Families: Secreted Protein

Protein Pathways: MAPK signaling pathway, Melanoma, Pathways in cancer, Regulation of actin cytoskeleton

Gene Summary: This gene encodes a member of a family of proteins that are involved in a variety of biological processes, including embryonic development, cell growth, morphogenesis, tissue repair, tumor growth and invasion. This gene is expressed in cardiac cells and is required for proper heart development. Mutation in this gene was also observed in individuals with metacarpal 4-5 fusion. [provided by RefSeq, Mar 2014]

Product images:



Circular map for RG221629