

Product datasheet for **RG221620**

AKAP12 (NM_005100) Human Tagged ORF Clone

Product data:

Product Type:	Expression Plasmids
Product Name:	AKAP12 (NM_005100) Human Tagged ORF Clone
Tag:	TurboGFP
Symbol:	AKAP12
Synonyms:	AKAP250; SSeCKS
Mammalian Cell Selection:	Neomycin
Vector:	pCMV6-AC-GFP (PS100010)
E. coli Selection:	Ampicillin (100 ug/mL)
ORF Nucleotide Sequence:	>RG221620 representing NM_005100 Red=Cloning site Blue=ORF Green=Tags(s)

TTTTGTAATACGACTCACTATAGGGCGGCCGGGAATTCGTCGACTGGATCCGGTACCGAGGAGATCTGCC
GCC**CGATCGCC**

ATGGGCGCCGGGAGCTCCACCGAGCAGCGCAGCCCGGAGCAGCCGCCGAGGGGAGCTCCACGCCGGCTG
AGCCCCGAGCCAGCGCGCGGCCCTCGGCCGAGGCGGCCAGACACCACCGCGGACCCCGCCATCGC
TGCCCTCGGACCCCGCCACCAAGCTCCTACAGAAGAATGGTCAGCTGTCCACCATCAATGGCGTAGCTGAG
CAAGATGAGCTCAGCCTCAGGAGGGTGACCTAAATGGCCAGAAAGGAGCCCTGAACGGTCAAGGAGCCC
TAAACAGCCAGGAGGAAGAAGAAGTCAATGTCACAGAGGTTGGACAGAGAGACTCTGAAGATGTGAGCAA
AAGAGACTCCGATAAAGAGATGGCTACTAAGTCAGCGGTTGTTACGACATCACAGATGATGGGCAGGAG
GAGACACCCGAAATAATCGAACAGATTCCTTCTCAGAAAGCAATTTAGAAGAGCTAACACAACCCACTG
AGTCCCAGGCTAATGATATTGGATTTAAGAAGGTGTTAAGTTTGTGGCTTTAAATTCAGTGTGAAAAA
GGATAAGACAGAGAAGCCTGACACTGTCCAGCTACTCACTGTGAAGAAAGATGAAGGGGAGGGAGCAGCA
GGGGCTGGCGACCACAAGGACCCAGCCTTGGGGCTGGAGAAGCAGCATCCAAAGAAAGCGAACCCAAAC
AATCTACAGAGAAACCCGAAGAGACCCGTAAGCGTGAGCAAAGCCACGCAGAAATTTCTCCCCAGCCGA
ATCTGGCCAAGCAGTGGAGGAATGCAAAGAGGAAGGAGAAGAGAAACAAGAAAAAGAACCTAGCAAGTCT
GCAGAATCTCCGACTAGTCCCAGTCAAGTGAACAGGATCAACCTTCAAAAAATCTTCACTCAAGGTT
GGGCCGGCTGGCGCAAAAAGACCAGTTTCAGGAAGCCGAAGGAGGATGAAGTGGAAGCTTCAGAGAAGAA
AAAGGAACAAGAGCCAGAAAAAGTAGACACAGAAGAAGACGGAAGGCAGAGGTTGCCTCCGAGAAACTG
ACCGCCTCCGAGCAAGCCACCCACAGGAGCCGCGAGAAAGTGCACAGACCCCGGTTATCAGCTGAAT
ATGAGAAAGTTGAGCTGCCCTCAGAGGAGCAAGTCAAGTGGCTCGCAGGGACCTTCTGAAGAGAAACCTGC
TCCGTTGGCGACAGAAGTGTGGATGAGAAAATAGAAGTCCACCAAGAAGAGGTTGTGGCCGAAGTCCAC
GTCAGCACCGTGGAGGAGAGAACCAGAGCAGAAAACGAGGTTGAAGAAACAGCAGGGTCTGTGCCAG
CTGAAGAATTGGTTGAAATGGATGCAGAACCTCAGGAAGCTGAACCTGCCAAGGAGCTGGTGAAGCTCAA
AGAAACGTGTGTTCCGGAGAGGACCCTACACAGGGAGCTGACCTCAGTCTGATGAGAAGTGTCTGCC



[View online »](#)

AAACCCCCGAAGGCGTTGTGAGTGAGGTGGAATGCTGTCATCACAGGAGAGAATGAAGGTGCAGGGAA
 GTCCACTAAAGAAGCTTTTTACCAGCACTGGCTTAAAAAGCTTTCTGGAAGAAACAGAAAGGGAAAAAG
 AGGAGGAGGACGAGGAATCAGGGGAGCACACTCAGGTTCCAGCCGATTCTCCGGACAGCCAGGAGGAG
 CAAAAGGGCGAGAGCTCTGCCTCATCCCCTGAGGAGCCCAGGAGATCACGTGTCTGGAAGGGGCTTAG
 CCGAGGTGCAGCAGGATGGGGAAGCTGAAGAAGGAGCTACTTCCGATGGAGAGAAAAAAGAGAAGGTGT
 CACTCCCTGGGCATCATTCAAAAAGATGGTGACGCCCAAGAAGCGTGTAGACGGCCTTCGGAAGTGT
 AAAGAAGATGAGCTGGACAAGGTCAAGAGCGCTACCTTGTCTTCCACCGAGAGCACAGCCTCTGAAATGC
 AAGAAGAAATGAAAGGGAGCGTGGAAAGGCCAAAGCCGGAAGAACCAGCGCAAGGTGGATACCTCAGT
 ATCTTGGGAAGCTTTAATTTGTGTGGGATCATCCAAGAAAAGAGCAAGGAGAGGGTCTCTTCTGATGAG
 GAAGGGGGACAAAAGCAATGGGAGGAGACCACCAGAAAGCTGATGAGGCCGGAAGAGACAAAGAGACGG
 GGACAGACGGGATCCTTGTGTTCCCAAGAACATGATCCAGGGCAGGGAAGTCTCCCGGAGCAAGC
 TGGAAAGCCTACCGAAGGGGAGGGCGTTTCCACCTGGGAGTCATTTAAAAGTGTAGTACGCCAAGAAAA
 AAATCAAAGTCCAAGCTGGAAGAGAAAAGCGAAGACTCCATAGCTGGGTCTGGTGTAGAATTCCACTC
 CAGACTGAACCCGGTAAAGAAGAATCCTGGGTCTCAATCAAGAAGTTTATTCTGGACGAAGGAAGAA
 AAGGCCAGATGGGAAACAAGAACAAGCCCTGTTGAAGACGCAGGGCCAACAGGGGCCAACGAAGATGAC
 TCTGATGTCCCGCCGTGGTCCCTCTGTCTGAGTATGATGCTGTAGAAAGGGAGAAAAATGGAGGCACAGC
 AAGCCAAAAAGCGCAGAGCAGCCGAGCAGAAAGGCAGCCACTGAGGTGTCCAAGGAGCTCAGCGAGAG
 TCAGGTTCATATGATGGCAGCAGCTGTCGCTGACGGGACGAGGGCAGCTACCATTATTGAAGAAAGGTCT
 CCTTCTGGATATCTGCTTCAAGTACAGAACCTTTGAACAAGTAGAAGCTGAAGCCGACTGTTAACTG
 AGGAGGTATTGGAAGAGAAAGTAAATGCAGAAGAAGAACCCCGGTTACTGAACCTCTGCCAGAGAA
 CAGAGAGGCCCGGGCGACACGGTCTTGTAGGCGGAATTGACCCCGAAGCTGTGACAGCTGCAGAA
 ACTGCAGGGCCATTGGGTGCCAAGAAGGAACCGAAGCATCTGCTGTGAAGAGACCACAGAAATGGTGT
 CAGCAGCTCCCAGTTAACCGACTCCCGACACCACAGAGGAGGCCACTCCGGTGCAGGAGGTGGAAAGG
 TGGCGTACCTGACATAGAAGAGCAAGAGAGGGGACTCAAGAGGTCTCCAGGCAGTGGCAGAAAAAGTG
 AAAGAGGAATCCAGCTGCTGGCACCGGTGGGCCAGAAGATGTCTTACGCTGTGCAGAGAGCAGAGG
 CAGAAAGACCAGAAGAGCAGGCTGAAGCGTCGGGTCTGAAGAAAGAGACGGATGTAGTGTGAAAGTAGA
 TGCTCAGGAGGCAAAAAGTACGCTTTTACACAAGGGAAGGTGGTGGGCGAGACCACCCAGAAAGCTTT
 GAAAAAGCTCCTCAAGTACAGAGAGCATAGAGTCCAGTGAAGTGTAAACACTTGTCAAGCCGAAACCT
 TAGCTGGGGTAAAATCACAGGAGATGGTGTGGAACAGGCTATCCCCCTGACTCGGTGGAACCCCTAC
 AGACAGTGAAGTGTGGAAGCACCCTGAGCCGACTTTGACGCACCAGGCACAACCCAGAAAGACGAG
 ATTGTGGAATCCATGAGGAGAAATGAGGTGCGATCTGGTACCCAGTCAAGGGGCACAGAAGCAGAGGCAG
 TTCTGACAGAAAGAGAGGCCCTCCAGCACCTTCCAGTTTTGTGTTCCAGGAAGAACTAAAGAACAATC
 AAAGATGGAAGCACTCTAGAGCATACAGATAAAGAGGTGTCAAGTGGAAACTGTATCCATTTCTGCAAAG
 ACTGAGGGGACTCAAGAGGCTGACCAGTATGCTGATGAGAAAACCAAGACGTACCATTTTTCGAAGGAC
 TTGAGGGGTCTATAGACACAGGCATAACAGTCAAGTCCGGGAAAAGGTCACTGAAGTTGCCCTTAAAGGTGA
 AGGGACAGAAGAAGCTGAATGTAAGAAAGGATGATGCTCTTGAAGTGCAGAGTCAAGTCAAGTCTCCTCCA
 TCCCCGTGGAGAGAGAGATGGTAGTTCAAGTCAAGAGGGAGAAAACAGAAGCAGAGCCAACCCATGTGA
 ATGAAGAGAAGCTTGAGCACGAAACAGCTGTTACCGTATCTGAAGAGTCAAGTCAAGCAGCTCCTCCAGC
 AGTGAATGTGCCATCATAGATGGGGCAAAGGAAGTCAAGCTTTGGAAGGAAGCCCTCCTCCCTGCCTA
 GGTCAAGAGGAGGCAGTATGCACCAAAATTCAGTTTCAAGTCTGAGGCTCTGAGGCATCATTCACTTAACAGCGG
 CTGCAGAGGAGGAAAAGTCTTAGGAGAAACTGCCAACATTTTAGAAAACAGGTGAAACGTTGGAGCCTGC
 AGGTGCACATTTAGTTCTGGAAGAGAAATCCTCTGAAAAAATGAAGACTTTGCCGCTCATCCAGGGGAA
 GATGCTGTGCCACAGGGCCGACTGTCAGGCAAAATCGACACCAGTGTAGTATCTGCTACTACCAAGA
 AAGGCTTAAGTTCGACCTGGAAGGAGAGAAAACCACATCACTGAAGTGGAAAGTCAAGTGAAGTCAAGTGA
 GCAGGTTGCTTCCAGGAGGTCAAAGTGAAGTGTAGCAATTGAGGATTTAGAGCCTGAAAAAGGATTTT
 GAACCTGAGACAAAAGCAGTAACTTGTCCAAAACATCATCCAGACAGCCGTTGACCAGTTGTACGTA
 CAGAAGAAACAGCCACCGAAATGTTGACGTCTGAGTTACAGACACAAGCTCACGTGATAAAGCTGACAG
 CCAGGACGCTGGACAGGAAACGGAGAAAGAAGGAGAGGAACCTCAGGCCTCTGCACAGGATGAAACACCA
 ATTACTTCAGCCAAAGAGGAGTCAAGTCAACCGAGTGGGACAAGCACATTCTGATATTTCCAAAGACA
 TGAGTGAAGCCTCAGAAAAGACCATGACTGTTGAGGTAGAAGGTTCCACTGTAATGATCAGCAGCTGGA
 AGAGGTGCTCCTCCATCTGAGGAAGAGGGAGGTGGAGCTGGAACAAAGTCTGTGCCAGAAGATGATGGT
 CATGCCTGTTAGCAGAAAGAATAGAGAAGTCAAGTGAACCGAAAGAAGATGAAAAGGTGATGATG

TTGATGACCCTGAAAACCAAGAACTCAGCCCTGGCTGATACTGATGCCTCAGGAGGCTTAACCAAAGAGTC
 CCCAGATACAAATGGACCAAAACAAAAGAGAAGGAGGATGCCAGGAAGTAGAATTGCAGGAAGGAAAA
 GTGCACAGTGAATCAGATAAAGCGATCACACCCCAAGCACAGGAGGATTACAGAAAACAGAGAGAGAAT
 CTGCAAAGTCAGAACTTACAGAATCT

ACGCGTACGCGGCGCTCGAG - GFP Tag - GTTTAA

Protein Sequence:

>RG221620 representing NM_005100
 Red=Cloning site Green=Tags(s)

MGAGSSTEQRSPPEGSSTPAEPEPSGGGSAEAPDPTADPAIAASDPATKLLQKNGQLSTINGVAE
 QDELSLQEGDLNGQKALNGQALNSQEEEEVIVTEVGQRDSEDSKRSDKEMATKSAVVDITDDGQE
 ETPEIIEQIPSSSENLEELTQPTESQANDIGFKKVFVKFVGFKFTVKKDKTEKPDVTQLLTVKKDEGEGAA
 GAGDHKDP SLGAGEAASKESEPKQSTEKPEETLKREQSHAEISPPAESGQAVEECKEEGEEKQEKEPSKS
 AESPTSPVTSETGSTFKKFFTQGWAGWRKTSFRPKPEDEVEASEKKKEQEPEKVDTEEDGKAEVASEKL
 TASEQAHPQEPAESAHPEPRLSAEYKVELPSEEQVSGSQPSEEKPAPLATEVFDEKIEVHQEEVVAEVH
 VSTVEERTEEQTEVEETAGSVP AEELVEMDAEPQEAEPKELVKLKETCVSGEDPTQGADLSPDEKVL S
 KPPEGVSEVEMLSSQERMKVQGSPLKLLFTSTGLKLLSGKKQKGRGGGDEESGEHTQVPADSPDSQEE
 QKGESSASSPEEP EITCLEKGLAEVQQDGEAEEGATSDGKREGVTPWASFKKMVTPKKRVRPSESD
 KEDELKVKSATL SSTESESEMQEEMKGSVEEPKPEEPKRKVDTSVSWEALICVGSKKRARRGSSSDE
 EGGPKAMGGDHQK ADEAGDKETGTDGILAGSQEHDPGQSSSPEQAGSPTEGEGVSTWESFKRLVTPRK
 KSKSKLEEKSEDSIAGSGVEHSTPDTEPGKEESWVSIKKFIPGRRKKRDPGKQEQA PVEDAGPTGANEDD
 SDVPAVVPLSEYDAVEREKMEAQAQKSAEQPEQKAATEVSKELSESQVHMMAAAVADGTRAATII EERS
 PSWISASVTEPLEQVEAEALL TEEVLEREVI AEEEEPTVTEPLPENREARGD TVVSEAE LTPAEVTA AE
 TAGPLGAEEGTEASAAEETEMVS AVSQLTDSPTTEEATPVQVEEGVPDIEEQERRTQEV LQAVAEKV
 KEESQLPGTGGPEDVLPVQRAEAERPEEQAEASGLKKE TDVVLKVDAQEAKTEPFTQ GKVVGGTTPE SF
 EKAPQVTESIESS ELVTTCAETLAGVKSQEMVMEQAIPPDSVETPTDSETD GSTPVADFDAPGTTQKDE
 IVEIHEENEVASGTQSGGTEAEAVPAQKERPPAPSSVFQEETKEQSKMEDTLEHTDKEVSVETVSI LSK
 TEGTQEADQYADEKTKDVPFFEGLEGSIDTGITVSREKVTEVALKGEGETEAECKKDDALELQSHAKSPP
 SPVEREMVVQVEREKTEAEPHVNEEKLEHETAVTVSEEVSKQLLQTVNVPIIDGAKEVSSLEGSPPPCL
 GQEEAVCTKIQVQSSEASF LTA AAEKVLGETANILETGETLEPAGAHLVLEEKSSSEKNE DFAAHPGE
 DAVPTGPDCAKSTPVI VSATTKKGLSSDLEGEKTTSLKWKSDVDEQVACQEVKVSVAIEDLEPENGIL
 ELETKSSKLVQNI IQTAVDQFVRTEETATEMLTSELQTQAHVIKADSQDAGQETEKEGEEPQASAQDETP
 ITSAAKEESESTAVGQAHS DI SKDMSEASEKTMTVEVEGSTVNDQQL EEVVLPSEEEGGGAGTKSVPEDDG
 HALLAERIEKSLVEPKDEKGDVDDPENQNSALADTDASGGLTKE SPDTNGPKQKEKEDAQVELQEGK
 VHSESDKAITPQAQEELQKQERESAKSELTES

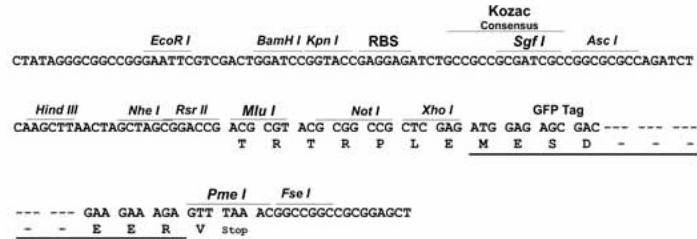
TRTRPLE - GFP Tag - V

Restriction Sites:

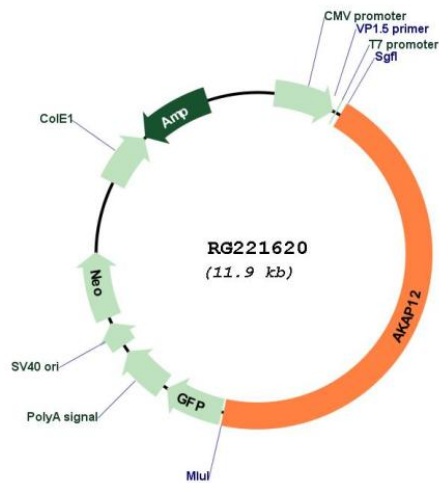
Sgfl-MluI

Cloning Scheme:

Cloning sites used for ORF Shutting:



Plasmid Map:



ACCN:	NM_005100
ORF Size:	5346 bp
OTI Disclaimer:	The molecular sequence of this clone aligns with the gene accession number as a point of reference only. However, individual transcript sequences of the same gene can differ through naturally occurring variations (e.g. polymorphisms), each with its own valid existence. This clone is substantially in agreement with the reference, but a complete review of all prevailing variants is recommended prior to use. More info
OTI Annotation:	This clone was engineered to express the complete ORF with an expression tag. Expression varies depending on the nature of the gene.
Components:	The ORF clone is ion-exchange column purified and shipped in a 2D barcoded Matrix tube containing 10ug of transfection-ready, dried plasmid DNA (reconstitute with 100 ul of water).
Reconstitution Method:	<ol style="list-style-type: none">1. Centrifuge at 5,000xg for 5min.2. Carefully open the tube and add 100ul of sterile water to dissolve the DNA.3. Close the tube and incubate for 10 minutes at room temperature.4. Briefly vortex the tube and then do a quick spin (less than 5000xg) to concentrate the liquid at the bottom.5. Store the suspended plasmid at -20°C. The DNA is stable for at least one year from date of shipping when stored at -20°C.
RefSeq:	NM_005100.2 , NP_005091.2
RefSeq Size:	6609 bp
RefSeq ORF:	5349 bp
Locus ID:	9590
UniProt ID:	Q02952
Cytogenetics:	6q25.1
Domains:	PkinA_anch
Protein Families:	Druggable Genome
Gene Summary:	The A-kinase anchor proteins (AKAPs) are a group of structurally diverse proteins, which have the common function of binding to the regulatory subunit of protein kinase A (PKA) and confining the holoenzyme to discrete locations within the cell. This gene encodes a member of the AKAP family. The encoded protein is expressed in endothelial cells, cultured fibroblasts, and osteosarcoma cells. It associates with protein kinases A and C and phosphatase, and serves as a scaffold protein in signal transduction. This protein and RII PKA colocalize at the cell periphery. This protein is a cell growth-related protein. Antibodies to this protein can be produced by patients with myasthenia gravis. Alternative splicing of this gene results in two transcript variants encoding different isoforms. [provided by RefSeq, Jul 2008]