

## Product datasheet for **RG221606**

### **CD61 (ITGB3) (NM\_000212) Human Tagged ORF Clone**

#### **Product data:**

Product Type:	Expression Plasmids
Product Name:	CD61 (ITGB3) (NM_000212) Human Tagged ORF Clone
Tag:	TurboGFP
Symbol:	CD61
Synonyms:	BDPLT2; BDPLT16; BDPLT24; CD61; GP3A; GPIIIa; GT; GT2
Mammalian Cell Selection:	Neomycin
Vector:	pCMV6-AC-GFP (PS100010)
E. coli Selection:	Ampicillin (100 ug/mL)



[View online »](#)

**ORF Nucleotide  
Sequence:**

>RG221606 representing NM\_000212  
 Red=Cloning site Blue=ORF Green=Tags(s)

TTTTGTAATACGACTCACTATAGGGCGGCCGGGAATTCGTCGACTGGATCCGGTACCGAGGAGATCTGCC  
 GCC**CGGATCGCC**

ATGCGAGCGCGGCCGCGCCCGCCGCTCTGGGCGACTGTGCTGGCGCTGGGGGCGCTGGCGGGCGTTG  
 GCGTAGGAGGGCCCAACATCTGTACCACGCGAGGTGTGAGCTCCTGCCAGCAGTGCTGGCTGTGAGCCC  
 CATGTGTGCCTGGTGTCTGATGAGGCCCTGCCTCTGGGCTCACCTCGCTGTGACCTGAAGGAGAATCTG  
 CTGAAGGATAACTGTGCCCCAGAATCCATCGAGTTCACAGTGAGTGAGGCCGAGTACTAGAGGACAGGC  
 CCCTCAGCGACAAGGGCTCTGGAGACAGCTCCCAGGCTCAAGTCAGTCCCCAGAGGATTGCACTCCG  
 GCTCCGGCCAGATGATTCGAAGAATTTCTCCATCCAAGTGCAGCAGGTGGAGGATTACCTGTGGACATC  
 TACTACTTGATGGACCTGTCTTACTCCATGAAGGATGATCTGTGGAGCATCCAGAACCTGGGTACCAAGC  
 TGGCCACCCAGATGCGAAAGCTCACCAGTAACCTGCGGATTGGCTTCGGGGCATTGTGGACAAGCCTGT  
 GTCACCATACATGTATATCTCCCACCAGAGGCCCTCGAAAACCCCTGCTATGATATGAAGACCACCTGC  
 TTGCCCATGTTTGGCTACAAACACGTGTGACGCTAACTGACCAGGTGACCCGCTCAATGAGGAAGTGA  
 AGAAGCAGAGTGTGTACGGAACCGAGATGCCCCAGAGGGTGGCTTTGATGCCATCATGCAGGCTACAGT  
 CTGTGATGAAAAGATTGGCTGGAGGAATGATGCATCCCCTTGGCTGGTGTACCCTGATGCCAAGACT  
 CATATAGCATTGGACGGAAGGCTGGCAGGCATTGTCCAGCCTAATGACGGGCAGTGTGATGTTGGTAGTG  
 ACAATCATTACTCTGCCTCCACTACCATGGATTATCCCTCTTGGGGCTGATGACTGAGAAGCTATCCCA  
 GAAAAACATCAATTTGATCTTTGAGTACTGAAATGTAGTCAATCTCTATCAGAACTATAGTGAGCTC  
 ATCCCAGGGACCAGATTGGGGTTCTGTCCATGGATTCCAGCAATGTCTCCAGCTCATTGTTGATGCTT  
 ATGGGAAAAATCCGTTCTAAAGTAGAGCTGGAAGTGCAGTACCTCCCTGAAGAGTTGTCTATCCCTCAA  
 TGCCACCTGCCTCAACAATGAGGTCACTCCCTGGCCTCAAGTCTTGTATGGGACTCAAGATTGGAGACAG  
 GTGAGCTTCAGCATTGAGGCAAGGTGCGAGGCTGTCCCAGGAGAAGGAGAAGTCTTTACCATAAAGC  
 CCGTGGGCTTCAAGGACAGCCTGATCGTCCAGGTACCTTTGATTGTGACTGTGCCTGCCAGGCCAAGC  
 TGAACCTAATAGCCATCGCTGCAACAATGGCAATGGGACCTTTGAGTGTGGGTATGCCGTTGTGGGCT  
 GGCTGGCTGGGATCCCAGTGTGAGTGTGAGGAGGACTATCGCCCTCCCAGCAGGACGAATGCAGCC  
 CCCGGGAGGGTCAGCCCTGTGAGCCAGCGGGGCGAGTGCCTCTGTGGTCAATGTGTCTGCCACAGCAG  
 TGACTTTGGCAAGATCACGGCAAGTACTGCGAGTGTGACGACTTCTCCTGTGTCCGCTACAAGGGGGAG  
 ATGTGCTCAGGCCATGGCCAGTGCAGCTGTGGGACTGCCTGTGTGACTCCGACTGGACCGGCTACTACT  
 GCAACTGTACCACGCGTACTGACACCTGCATGTCCAGCAATGGGCTGCTGTGCAGCGGCCGCGGCAAGTG  
 TGAATGTGGCAGCTGTGTCTGTATCCAGCCGGGCTCCTATGGGGACACCTGTGAGAAGTGCCCCACCTGC  
 CCAGATGCCTGCACCTTTAAGAAAGAAATGTGTGGAGTGAAGAAGTTTGACCGGGGAGCCCTACATGACG  
 AAAATACCTGCAACCGTTACTGCCGTGACGAGATTGAGTCAGTGAAGAGCTTAAGGACACTGGCAAGGA  
 TGCAGTGAATTGTACCTATAAGAATGAGGATGACTGTGTGCTCAGATTCCAGTACTATGAAGATTCTAGT  
 GGAAAGTCCATCCTGTATGTGGTAGAAGAGCCAGAGTGTCCCAAGGGCCCTGACATCCTGGTGGTCTGC  
 TCTCAGTGTGGGGCCATTCTGCTCATTGGCCTTGCCGCCCTGCTCATCTGAAACTCCTCATCACCAT  
 CCACGACCGAAAAGAATTCGCTAAATTTGAGGAAGAACGCGCCAGAGCAAAATGGGACACAGCCAACAAC  
 CCACTGTATAAAGAGGCCACGTCTACCTCACCAATATCACGTACCGGGGCACT

AGCGGACCGACGCGTACGCGGCCGCTCGAG - GFP Tag - GTTTAA

**Protein Sequence:** >RG221606 representing NM\_000212  
Red=Cloning site Green=Tags(s)

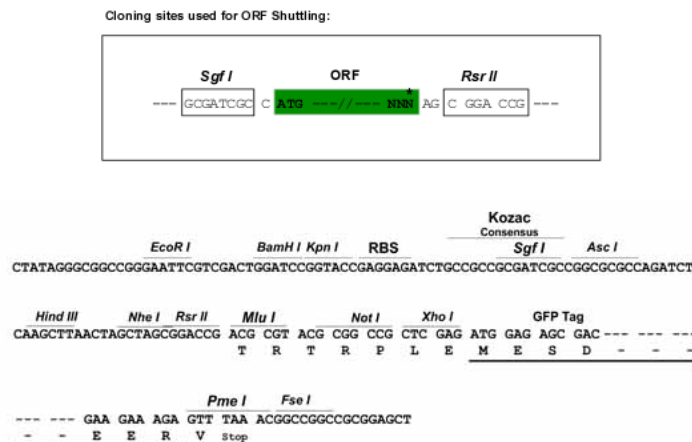
```

MRARPRRPLWATVLAALGALAGVGVGGPNICTTRGVSSCQQLAVSPMCAWCSDEALPLGSPRCDLKENL
LKDNCAPESEIEFPVSEARVLEDRPLSDKSGSDSSQVTQVSPQRIALRLRPDDSKNFSIQVRQVEDYPVDI
YYLMDLSYSMKDDLWSIQNLGTKLATQMRKLT SNLRIGFGAFVDKPVSPYMYISPPALENPCYDMKTTC
LPMFGYKHVLTLDQVTRFNEEVKKQSVSRNRDAPEGGFDAIMQATVCDEKIGWRNDASHLLVFTTDAKT
HIALDGRLAGIVQPNDBGQCHVGSNDHYSASTTMDYPSLGLMTEKLSQKNINLIFAVTENVVNLVYQNYSEL
IPGTTVGVL SMDSSNLQLIVDAYGKIRSKVELEVRDLPEELSLSFNATCLNNEVIPGLKSCMGLKIGDT
VSFSIEAKVRGCPQEKEKSFTIKPVGFKDSLIVQVTFDCACQAQAEPNSHRCNNNGTFCGVCRCGP
GWLGSQCCESEEDYRPSQQDECSPREGQPVCSQRGECLCGQCVCHSSDFGKITGKYCECDDFSCVRYKGE
MCSGHGQCSCGDCLCDSWDTGYCNCCTTRTDTCMSSNGLLCSGRGKCECGSCVCIQPGSYGDTCEKCPTC
PDACTFKKCEVECKKFDRGALHDENTCNRYCRDEIESVKELKDTGKDAVNCTYKNEDDCVRFQYYEDSS
GKSILYVVEEPECPKGPDILVLLSVMGAILLIGLAALLIWKLLITIHDRKEFAKFEERARAKWDTANN
PLYKEATSTFTNITYRGT
    
```

SGPTRRRLE - GFP Tag - V

**Restriction Sites:** SgfI-RsrII

**Cloning Scheme:**



**ACCN:** NM\_000212

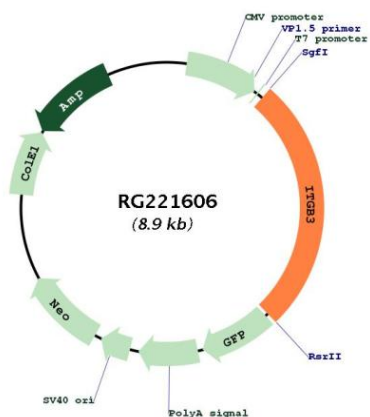
**ORF Size:** 2364 bp

**OTI Disclaimer:** The molecular sequence of this clone aligns with the gene accession number as a point of reference only. However, individual transcript sequences of the same gene can differ through naturally occurring variations (e.g. polymorphisms), each with its own valid existence. This clone is substantially in agreement with the reference, but a complete review of all prevailing variants is recommended prior to use. [More info](#)

**OTI Annotation:** This clone was engineered to express the complete ORF with an expression tag. Expression varies depending on the nature of the gene.

<b>Components:</b>	The ORF clone is ion-exchange column purified and shipped in a 2D barcoded Matrix tube containing 10ug of transfection-ready, dried plasmid DNA (reconstitute with 100 ul of water).
<b>Reconstitution Method:</b>	<ol style="list-style-type: none"><li>1. Centrifuge at 5,000xg for 5min.</li><li>2. Carefully open the tube and add 100ul of sterile water to dissolve the DNA.</li><li>3. Close the tube and incubate for 10 minutes at room temperature.</li><li>4. Briefly vortex the tube and then do a quick spin (less than 5000xg) to concentrate the liquid at the bottom.</li><li>5. Store the suspended plasmid at -20°C. The DNA is stable for at least one year from date of shipping when stored at -20°C.</li></ol>
<b>RefSeq:</b>	<a href="#">NM_000212.3</a>
<b>RefSeq Size:</b>	4894 bp
<b>RefSeq ORF:</b>	2367 bp
<b>Locus ID:</b>	3690
<b>UniProt ID:</b>	<a href="#">P05106</a>
<b>Cytogenetics:</b>	17q21.32
<b>Domains:</b>	INB, EGF
<b>Protein Families:</b>	Druggable Genome, ES Cell Differentiation/IPS, Transmembrane
<b>Protein Pathways:</b>	Arrhythmogenic right ventricular cardiomyopathy (ARVC), Dilated cardiomyopathy, ECM-receptor interaction, Focal adhesion, Hematopoietic cell lineage, Hypertrophic cardiomyopathy (HCM), Regulation of actin cytoskeleton
<b>Gene Summary:</b>	The ITGB3 protein product is the integrin beta chain beta 3. Integrins are integral cell-surface proteins composed of an alpha chain and a beta chain. A given chain may combine with multiple partners resulting in different integrins. Integrin beta 3 is found along with the alpha IIb chain in platelets. Integrins are known to participate in cell adhesion as well as cell-surface mediated signalling. [provided by RefSeq, Jul 2008]

Product images:



Circular map for RG221606