

Product datasheet for **RG221605**

NCBP2 (NM_001042540) Human Tagged ORF Clone

Product data:

Product Type: Expression Plasmids
Product Name: NCBP2 (NM_001042540) Human Tagged ORF Clone
Tag: TurboGFP
Symbol: NCBP2
Synonyms: CBC2; CBP20; NIP1; PIG55
Mammalian Cell Selection: Neomycin
Vector: pCMV6-AC-GFP (PS100010)
E. coli Selection: Ampicillin (100 ug/mL)
ORF Nucleotide Sequence: >RG221605 representing NM_001042540
Red=Cloning site **Blue**=ORF **Green**=Tags(s)

TTTTGTAATACGACTCACTATAGGGCGGCCGGAATTCGTCGACTGGATCCGGTACCGAGGAGATCTGCC
GCC**CGATCGCC**

ATGTCGGGTGGCCTCCTGAAGGCGCTGCGCAGCGACTCCTACGTGGAGCTGAGCCAGTACCGGGACCAGC
ACTTCCGGGTGACAATGAAGAACAAGAAAATTACTGAAGAAAAGCTATGCGGAAAACGCCATGCGGTA
CATAAATGGGACGCGTCTGGATGACCGAATCATTGCGACAGACTGGGACGCAGGCTTTAAGGAGGGCAGG
CAATACGGCCGTGGGCGATCTGGGGCCAGGTTCCGGATGAGTATCGGCAGGACTACGATGCTGGGAGAG
GAGGCTATGAAAACCTGGCACAGAACCAG

AG**CGGACCG**ACGCGTACGCGGCCGCTCGAG - GFP Tag - GTTTAA

Protein Sequence: >RG221605 representing NM_001042540
Red=Cloning site **Green**=Tags(s)
MSGGLLKALRSDSYVELSQYRDQHFRGDNEEQEKLLKSYAENAMRYINGTRLDDRIIRTDWDAGFKEGR
QYGRGRSGGQVRDEYRQDYDAGRGGYGKLAQNQ

SGPTRRRLE - GFP Tag - V

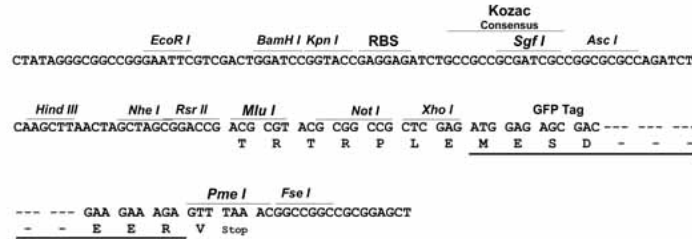
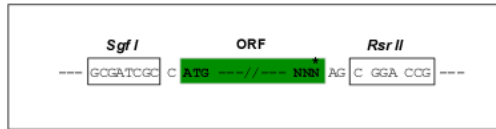
Restriction Sites: Sgfl-RsrII



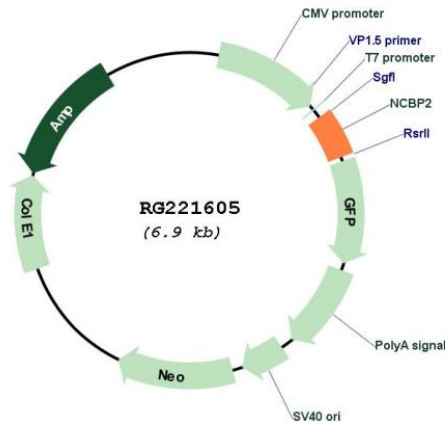
[View online »](#)

Cloning Scheme:

Cloning sites used for ORF Shuttling:



Plasmid Map:



ACCN: NM_001042540

ORF Size: 309 bp

OTI Disclaimer: The molecular sequence of this clone aligns with the gene accession number as a point of reference only. However, individual transcript sequences of the same gene can differ through naturally occurring variations (e.g. polymorphisms), each with its own valid existence. This clone is substantially in agreement with the reference, but a complete review of all prevailing variants is recommended prior to use. [More info](#)

OTI Annotation:	This clone was engineered to express the complete ORF with an expression tag. Expression varies depending on the nature of the gene.
Components:	The ORF clone is ion-exchange column purified and shipped in a 2D barcoded Matrix tube containing 10ug of transfection-ready, dried plasmid DNA (reconstitute with 100 ul of water).
Reconstitution Method:	<ol style="list-style-type: none">1. Centrifuge at 5,000xg for 5min.2. Carefully open the tube and add 100ul of sterile water to dissolve the DNA.3. Close the tube and incubate for 10 minutes at room temperature.4. Briefly vortex the tube and then do a quick spin (less than 5000xg) to concentrate the liquid at the bottom.5. Store the suspended plasmid at -20°C. The DNA is stable for at least one year from date of shipping when stored at -20°C.
RefSeq:	NM_001042540.1 , NP_001036005.1
RefSeq Size:	2016 bp
RefSeq ORF:	312 bp
Locus ID:	22916
UniProt ID:	P52298
Cytogenetics:	3q29
Protein Families:	Druggable Genome
Protein Pathways:	Spliceosome
Gene Summary:	The product of this gene is a component of the nuclear cap-binding protein complex (CBC), which binds to the monomethylated 5' cap of nascent pre-mRNA in the nucleoplasm. The encoded protein has an RNP domain commonly found in RNA binding proteins, and contains the cap-binding activity. The CBC promotes pre-mRNA splicing, 3'-end processing, RNA nuclear export, and nonsense-mediated mRNA decay. Multiple transcript variants encoding different isoforms have been found for this gene. [provided by RefSeq, Jul 2008]