

Product datasheet for **RG221597**

Fibulin 1 (FBLN1) (NM_006486) Human Tagged ORF Clone

Product data:

Product Type:	Expression Plasmids
Product Name:	Fibulin 1 (FBLN1) (NM_006486) Human Tagged ORF Clone
Tag:	TurboGFP
Symbol:	FBLN1
Synonyms:	FBLN; FIBL1
Mammalian Cell Selection:	Neomycin
Vector:	pCMV6-AC-GFP (PS100010)
E. coli Selection:	Ampicillin (100 ug/mL)



[View online »](#)

ORF Nucleotide Sequence:

>RG221597 representing NM_006486
 Red=Cloning site Blue=ORF Green=Tags(s)

TTTTGTAATACGACTCACTATAGGGCGGCCGGGAATTCGTCGACTGGATCCGGTACCGAGGAGATCTGCC
 GCC**CGGATCGCC**

ATGGAGCGCGCCGCGCCGTCGCGCCGGGTCCCGCTTCCGCTGCTGCTGCTCGGCGCCTTGCCTGCTGG
 CGGCCGAGTGGACGCGGATGTCCTCCTGGAGGCTGCTGTGCGGACGGACACCGGATGGCCACTCATCA
 GAAGGACTGCTCGCTGCCATATGCTACGGAATCCAAAGAATGCAGGATGGTGAGGAGCAGTGTGCCAC
 AGCCAGCTGGAGGAGCTGCACTGTGCCACGGGCATCAGCCTGGCCAACGAGCAGGACCGCTGTGCCACGC
 CCCACGGTGACAACGCCAGCCTGGAGGCCACATTTGTGAAGAGGTGCTGCCATTGCTGTCTGCTGGGGAG
 GCGGCCACAGGCCAGGCCAGAGCTGCGAGTACAGCCTCATGGTTGGCTACCAGTGTGGACAGGTCTTC
 CGGGCATGCTGTGTAAGAGCCAGGAGACCGGAGATTTGGATGTCGGGGGCTCCAAGAAACGGATAAGA
 TCATTGAGTTGAGGAGGAACAAGAGGACCCATATCTGAATGACCCTGCCGAGGAGCGGGCCCTGCAA
 GCAGCAGTCCGAGACACGGGTGACGAGTGGTCTGCTCCTGCTTCGTGGGCTACCAGCTGCTGTCTGAT
 GGTGCTCCTGTGAAGATGTCAATGAATGCATCACGGGCAGCCACAGCTGCCGGCTTGGAGAATCCTGCA
 TCAACACAGTGGGCTCTTCCGCTGCCAGCGGGACAGCAGCTGCCGGGACTGGCTATGAGCTCACAGAGGA
 CAATAGCTGCAAAGATATTGACGAGTGTGAGAGTGGTATTATAACTGCCTCCCCGATTTTATCTGTGAG
 AATACTCTGGGATCCTTCCGCTGCCACCCAAGCTACAGTGAAGAGTGGCTTTATAAAGATGCTCTAG
 GCAACTGTATTGATATCAATGAGTGTGTTGAGTATCAGTGGCCCGTGCCTATCGGGCATAACATGATCAA
 CACAGAGGGCTCCTACACGTGCCAGAAGAAGCTGCCAACTGTGGCCGTGGCTACCATCTCAACGAGGAG
 GGAACGCGCTGTGTTGATGTGGACGAGTCCGCGCCACCTGCTGAGCCCTGTGGGAAGGGACATCGCTGCC
 TGAACCTCCCGCAGTTTCCGCTGCGAATGCAAGACGGGTTACTATTTGACGGCATCAGCAGGATGTG
 TGTGATGTCAACGAGTCCAGCCTACCCCGGGCGCTGTGTGGCCACAAGTCCGAGAACACGCTGGGC
 TCTACCTCTGCAGCTGTTCCGTTGGGCTTCCGGCTCTCTGTGGATGGCAGGTCATGTGAAGACATCAATG
 AGTGCAGCAGCAGCCCTGTAGCCAGGAGTGTGCCAAGCTCTACGGCTCTACCAGTGTACTGCCGGCG
 AGGCTACCAGCTCAGCGATGTGGATGGAGTCACTGTGAAGACATCGACGAGTGCGCCCTGCCACCGGG
 GGCCACATCTGCTCCTACCGCTGCATCAACATCCCTGGAAGCTTCCAGTGCAGCTGCCCTCGTCTGGCT
 ACAGGCTGGCCCCAATGGCCGCACTGCCAAGACATTGATGAGTGTGTGACTGGCATCCACAAGTCTC
 CATCAACGAGACCTGCTCAACATCCAGGGCGGCTTCCGCTGCCTGGCCTTCGAGTGCCTGAGAAGTAC
 CGCGCTCCGACGACGCTCCAGCAGGAGAAGACAGACAGGTCGGCTGCATCAAGTCTGCCGCCCA
 ACGATGTCACATGCGTGTTCGACCCCGTGCACACCATCTCCACACCGTCATCTCGCTGCCTACCTCCG
 CGAGTTCACCCGCCCTGAAGAGATCATTTCTCCGGGCCATCACGCCACCGCATCTGCCAGCCAGGCT
 AACATCATCTTCGACATCACGGAAGGGAACCTGCCGGGACTCTTTTGACATCATCAAGCGTTACATGGACG
 GCATGACCGTGGGTGTCGTGCGCCAGGTGCGGCCATCGTGGGCCATTTTCATGCCGTCCTGAAGCTGGA
 GATGAACATGTGGTCCGGGGCGTGGTCTCCACCGAAATGTTGTCAACGTCCACATCTTCGTCTCTGAG
 TACTGGTTC

ACGCGTACGCGGCCGCTCGAG – GFP Tag – GTTTAA

Protein Sequence: >RG221597 representing NM_006486
 Red=Cloning site Green=Tags(s)

MERAAPSRRVPLPLLLLGGALLAAGVDADVLLLEACDGHMATHQKDCSLPYATESKECRMVQECCCH
 SQLEELHCATGISLANEQDRCATPHGDNASLEATFVKRCCHCCLLGRAAAQAGQSCYEYSLMVGYYCGQV
 RACCVKSQETGDLVDVGLQETDKIIEVEEEQEDPYLNDRCRGGGPKQQCRDTGDEVVCSFVGYQLLSD
 GVSCEDVNECITGSHSRLGESCINTVGSFRCQRDSSCGTGYELTEDNSCKDIDECESGIHNCLPDFICQ
 NTLGSFRCRPKLQCKSGFIQDALGNCIDINECLSIAPCPIGHTCINTEGSYTCQKNVPNCGRGYHLNEE
 GTRCVDVDECAPPAEPCGKGHRCVNSPGSFRCECKTGYFFDGI SRMCVDVNECQRYPRGLCGHKCENTLG
 SYLCSCSVGFRLSVDGRSCEDINECSSSPCSQECANVYGSYQCYCRRGYQLSDVDGVTCEIDICALPTG
 GHICSYRCINIPGSFQCSCPSSGYRLAPNGRNCQDIDECVTGIHNCINETCFNIQGGFRCLAFECPENY
 RRSAAATLQEKTDVRCIKSCRPNVDTCVFDPVHTISHTVISLPTFREFTRPEEIIFLRAITPPHPASQA
 NIIFDITEGNLRDSFDIIKRYMDGMTVGVVRQVRPIVGPFFHAVLKLEMNYVVGGVVSHRNVVNVHIFVSE
 YWF

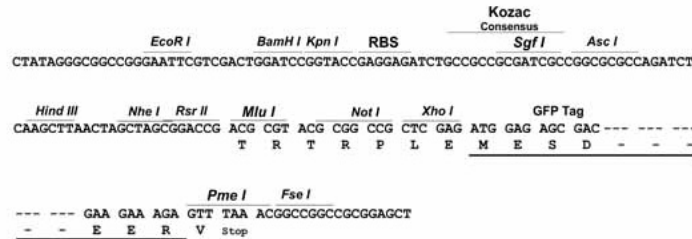
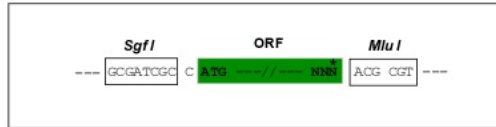
TRTRPLE - GFP Tag - V

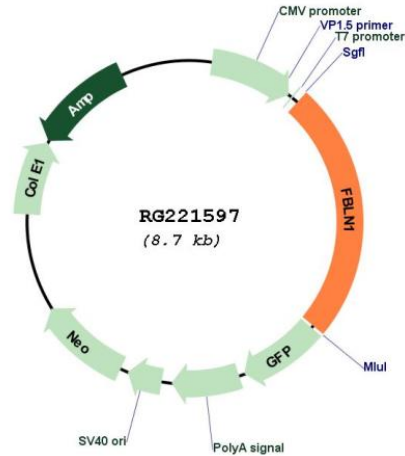
Restriction Sites:

SgfI-MluI

Cloning Scheme:

Cloning sites used for ORF Shutting:



Plasmid Map:


ACCN: NM_006486

ORF Size: 2109 bp

OTI Disclaimer: The molecular sequence of this clone aligns with the gene accession number as a point of reference only. However, individual transcript sequences of the same gene can differ through naturally occurring variations (e.g. polymorphisms), each with its own valid existence. This clone is substantially in agreement with the reference, but a complete review of all prevailing variants is recommended prior to use. [More info](#)

OTI Annotation: This clone was engineered to express the complete ORF with an expression tag. Expression varies depending on the nature of the gene.

Components: The ORF clone is ion-exchange column purified and shipped in a 2D barcoded Matrix tube containing 10ug of transfection-ready, dried plasmid DNA (reconstitute with 100 ul of water).

Reconstitution Method:

1. Centrifuge at 5,000xg for 5min.
2. Carefully open the tube and add 100ul of sterile water to dissolve the DNA.
3. Close the tube and incubate for 10 minutes at room temperature.
4. Briefly vortex the tube and then do a quick spin (less than 5000xg) to concentrate the liquid at the bottom.
5. Store the suspended plasmid at -20°C. The DNA is stable for at least one year from date of shipping when stored at -20°C.

RefSeq: [NM_006486.2](#), [NP_006477.2](#)

RefSeq Size: 2947 bp

RefSeq ORF: 2112 bp

Locus ID:	2192
UniProt ID:	P23142
Cytogenetics:	22q13.31
Domains:	ANATO, EGF_CA, EGF, EGF
Protein Families:	Secreted Protein
Gene Summary:	Fibulin 1 is a secreted glycoprotein that becomes incorporated into a fibrillar extracellular matrix. Calcium-binding is apparently required to mediate its binding to laminin and nidogen. It mediates platelet adhesion via binding fibrinogen. Four splice variants which differ in the 3' end have been identified. Each variant encodes a different isoform, but no functional distinctions have been identified among the four variants. [provided by RefSeq, Jul 2008]